



Chess Chatter

Newsletter of the Port Huron Chess Club

Editor: Lon Rutkofske

December 2022

Vol. 41 Number 9

The **Port Huron Chess Club** meets Thursdays, except holidays, from 6:30-10:00 PM, at Palmer Park Recreation Center, 2829 Armour Street, (NE corner of Garfield Street and Gratiot Ave...1 mile North of the Blue Water Bridge) Port Huron, Michigan. Everyone is welcome. All equipment provided. Email: PtHuronChessClub@aol.com or Website: <http://porthuronchessclub.yolasite.com>

Spoiler Alert: Avdic shows his Christmas spirit and actually loses some games in his December Simul!

Huso Avdic renewed his challenge to members of the club to a simultaneous exhibition on Thursday, December 8th to any and all who harbored a secret desire for revenge by upending the reigning club champion. As the evening wore on, it became clear that Huso may have had second thoughts about the prowess of his seven opponents ("**The Klaty Bunch**": **Brad, Braeden and Trenton; Bill Wingrove; Alan Gregg; Mark Schmidt; and Sandy Fisher.**). When the proverbial "smoke cleared", both Alan and Mark wrestled wins and Braeden forced a draw for their efforts against the club's "Top Dawg"! As always, Huso's humility and passion for the game emerged as he congratulated each of his adversaries with his gentlemanly demeanor and a generous spirit. The photos to follow better illustrate the energy Huso brings to the PHCC on a regular basis as he shares his ideas and expertise in making the PHCC a welcoming and creative place for developing lasting relationships playing the game we all have grown to embrace.



(Seated L-R) Brad Klaty, Bill Wingrove, Sandy Fisher, Mark 'Schmidt, Braeden Klaty, Alan Gregg, Trenton Klaty...Standing Huso Avdic.



Avdic on the move!

Happy Holidays to All the members and their families of our PHCC Community!



Mark Schmidt and Braeden Klaty ponder their positions.



Alan Gregg and Trenton Klaty plot their endgame strategies.



Brad Klaty and Bill Wingrove evaluate their positions.

Possible Match with the Oak Park Chess Club Moved to January!

Former PHCC member and supporter, Jason Morris is proposing a pre-Thanksgiving match between the PHCC and members of the Oak Park Chess Club on a Saturday in January. The OPCC has agreed to make the trek in the first of a pair of home/home matches. If you are interested in participating but have not yet contacted Lon, please contact Lon before January 9, 2023 so arrangements can be made!

Members' Games



Please send me what you consider your best games, annotated or not, so that I might be able to showcase them. The following games represent contests that have been available at the time of this printing. Email them to me or give them to me personally if you wish. Majority of analyses is done by Fritz 12, unless otherwise indicated. [This a reminder of the change in policy in the PHCC Challenge rules: # 14 - Games can be rated by the USCF, provided both players are members in good standing with the USCF and agree to have it rated by paying in advance to the TD (Lon Rutkofske, or other club official with a valid TD certification card.) of \$1.50@ to cover rating costs.] Updated Challenge rules will follow below:

Format and rules for PHCC Challenge System

- I. Purpose: to provide club members the opportunity to challenge higher rated players on a regular basis to improve and test their skills in over the board non-tournament competition.
- II. Regulations: (Effective 11-8-2018)
 - a. Challenges may be made by any club member on the PHCC rating list under the following circumstances:
 1. Can only be made only by a lower rated player.
 2. Can only be made during club hours and cannot be made after 8:00PM.
 3. Must be played on the same day as the challenge was made, so there can be no advanced challenges.
 4. Both players must be present.
 5. Only one challenge may be made per meeting.
 6. Challenger can only challenge a player that is rated less than 400 points above him on the rating list.
 7. All challenges must be accepted.
 8. No challenge may be made while a participant is involved in a tournament or challenge game.
 9. A clock must be used with the time control of G/60 with 5 second delay; must be recorded by both players and submitted to the rating director upon completion of the game. **(See Sample Score Sheet on page 2)**
 10. All challenge games must comply with current tournament rules of chess as established by the US Chess Federation.

11. No challenge game may be adjourned, but if an unusual circumstance arises, the club rating director may adjudicate.
12. No member may be challenged more than one consecutive time by the same challenger. This means that the lower rated player cannot challenge the same player two times in a row. He/she must play another match before this can take place, but this also means that the higher rated player may be challenged by the same rated player consecutively if he has not participated in a match in between challenges within a six- week period. Abuse (I.E: Constant challenges and re-challenges or other annoying or inconsiderate behavior) must be reported to the Director and he has the option of suspending the violator indefinitely from participation in the Challenge system. Disputes will be adjudicated by the ratings director, with the advice of other players as he so wishes.
13. Challenges can take place on the first Thursday of each month, or at any time there is no other tournament or event scheduled.
14. **Games can be rated by the USCF**, provided both players are members in good standing with the USCF and agree to have it rated by paying in advance to the TD (*Lon Rutkofske, or other club official with a valid TD certification card.*) of \$1.50@ to cover rating costs.
15. Results will be rated by the PHCC (*Using the USCF rating system.*) using current PHCC ratings posted at the club and will be adjusted as necessary by the club rating director. Changes will also be posted on the club website.

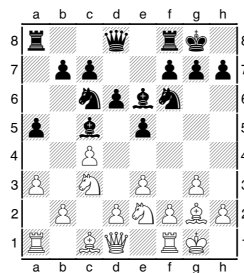
I have taken the liberty to post some games from the 2016 club championships for a couple of reasons: (1) to create interest in the upcoming 2023 championships; (2) to remember club member, **Noel Bedy** and regular members that we have not had the opportunity to play in some time; (3) to celebrate the history of our club. I hope you enjoy these games.

Boucher,David (1306) - Gregg,Alan (1981) [B21] Sicilian Defense 2016 PHCC Championships Port Huron (1), 07.01.2016
 1.e4 c5 2.d4 cxd4 3.c3 dxc3 4.Nxc3 e6 5.Nf3 a6 6.Bd3 d6 7.0-0 Be7 8.Be3 Nf6 9.h3 0-0 10.Rc1 Nbd7 11.Qe2 b5 12.b4 Bb7 13.Rc2 d5 14.e5 Ne4 15.a3 Nxc3 16.Rxc3 Rc8 17.Rxc8 Qxc8 18.Bxh7+ Kxh7 19.Ng5+ Bxg5 20.Bxg5 Kg8 21.Rc1 Qb8 22.Be7 Rc8 23.Rxc8+ Qxc8 24.Bd6 Qc4 25.Qe3 d4 26.Qg5 Qc8 27.Be7 d3 28.Bf6 Qf8 29.Be7 d2 0-1

Jones,G. Avery (1566) - Wilkinson,Stewart (1880) [B13] Caro-Kann:Exchange Variation 2016 PHCC Championships Port Huron (1), 17.03.2016
 1.d4 e6 2.Nf3 d5 3.Bf4 Nf6 4.e3 c5 5.c3 Nc6 6.Bd3 cxd4 7.exd4 Be7 8.0-0 0-0 9.Re1 Bd6 10.Ne5 Ne7 11.Nd2 Ng6 12.Bg3 Bxe5 13.dxe5 Nd7 14.Nb3 b6 15.Nd4 a6 16.Qh5 Nc5 17.Bc2 Bd7 18.Re3 Be8 19.b4 Nb7 20.Rf3 a5 21.Rf4 h6 22.Bxg6 fxg6

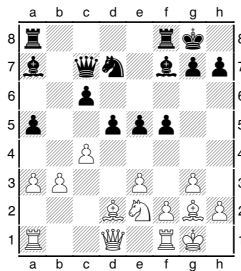
23.Rxf8+ Kxf8 24.Nxe6+ Kg8 25.Nxd8 gxf8 26.Nxb7 axb4 27.cxb4 g5 28.f3 Bc6 29.Nd6 Ra3 30.h3 d4 31.Nf5 Kh7 32.Nxd4 Bd5 33.e6 Ra8 34.a3 Re8 35.Re1 Kg6 36.Re5 Bc4 37.e7 Kf7 38.Nf5 1-0

Rutkofske,Lonnie (1800) - Heinrich,Chuckie (619) [A25] English Opening 2016 PHCC Championships Port Huron (1), 14.01.2016 [*Lonnie Rutkofske*]
 1.c4 e5 2.g3 Nf6 3.Bg2 Bc5 4.a3 a5 A very savvy move here, preventing White from driving away the KB with 5.b4. 5.Nc3 0-0 6.e3 Nc6 7.Nge2 d6 8.0-0 Be6 Diagram

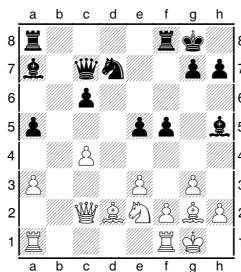


Many times, correct move order is essential, and better was probably 8...Bg4 first, and if 9.h3, Be6 10.b3, Qc8 puts pressure on h3. 9.Nd5 I really wanted to get rid of Black's irritating QB and thought this might be a good choice to force the issue and mix things up, giving Chuck an opportunity to err. 9...Nd7 This move took me by surprise. A better choice was probably the more traditional 9...Ne8 leaving space at d7 for the QB while still permitting the f5 push that Black wanted. 10.d4 Ba7 11.b3? This move was unnecessary...the simple 11.Nc7 saves a tempo keeping the immediate f5 at bay. I think this surprised Chuck as well, but I was determined to try to eliminate as many pieces as possible, and this would have forced Black to play B:d5, thus giving me the two bishop advantage and keeping his knights on the back three ranks. 11...f5! Another good move further illustrating how a single tempo can

change the complexion of the game!
 12.Nxc7 Qxc7 13.d5 Bf7! Another
 good choice. Thus far, Chuck has
 played a very solid game, although
 his KN is awkwardly placed. 14.dxc6
 bxc6 15.Bd2 I was at odds as to
 which piece to move here. I liked
 having my N ready to jump into
 holes at f4 and d4 in case Black
 pushed e4 but chose Bd2 instead of
 the natural Bb2, because I wanted to
 be able to defend b3 with Rb1 and
 eventually place my B at c3 hitting
 the a5 pawn. 15...d5 Diagram

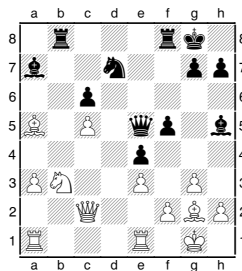


Premature. Black enjoys a strong
 pawn center, and his pieces are
 better placed. Probably 15...Rad8
 followed up with Nf6. 16.Qc2 dxc4?
 Had the QR moved to d8, this makes
 more sense because not only does it
 seize and open file, but it prevents
 threats along the h1-a8 diagonal.
 17.bxc4 Bh5?? This is probably the
 single move that doomed Chuck's
 game! Diagram

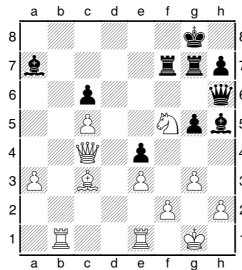


A questionable move here. Why
 take the B away from a powerful
 square where it can put real
 pressure on White's weak c-pawn? A
 superior plan would be 17...Bc5!!!
 followed by Nb6 with huge Q-side
 threats while White's pieces are in
 disarray. 18.Rfe1 Rab8 19.Nc1 e4
 20.Nb3 Now White gets some
 welcome counter play. 20...Bb6
 21.c5 Ba7 Had the QR remained on
 a8, this whole line would be refuted

by...18...Bc5 19.Nc1, e4 20.Nb3, Bf7
 21.Ba5, Ra5 22.Na5, Qa5 with a
 winning position. 22.Bxa5 Qe5!

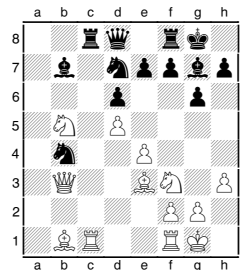


As you can see, had Black's QB
 remained on f7, he would have a
 smashing position! 23.Bb4 g5!?
 Much too soon and a very loosening
 move, compromising the Black K
 which will later become fatal. Again,
 the QB belongs on f7!!! 24.Rac1 Qf6
 25.Nd4 Ne5 26.Bf1 Despite both of
 his bishops being out of play on the
 edge of the board, Black has some
 very real threats and White must be
 careful. I thought a very long time on
 this sequence and felt I had to
 prevent Nd3 at all costs. Interesting
 is the fact that had the QB remained
 at f7, the move Qh6 looks
 devastating! 26...Rb7 27.Rb1 Rg7 A
 really bad plan...and there is little
 time to waste with all of this rook
 maneuvering! 28.Bc4+ I had to do
 something to get rid of the e5
 Knight, but the simple retreat,
 28...Bf7 would have been best, and
 both sides get rid of their bad
 bishops. Additionally, I wanted to
 trade down as many pieces as
 possible to create endgame chances
 for my extra pawn. 28...Nxc4?? This
 was a huge error....permitting the
 exchange of the well-placed N, for
 my bad bishop. 29.Qxc4+ [29.Qxc4+]
 29...Rff7 Moving the King away or
 interposing the QB was the only
 correct move! 30.Bc3 Qh6?? 31.Nxf5



Black Resigns 1-0

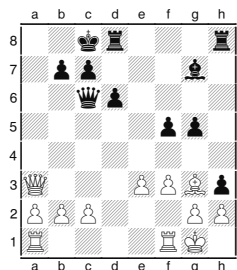
Wingrove,William (1606) -
 Morabito,Matthew (1859) [B22]
 Sicilian Defense 2016 PHCC
 Championships Port Huron (1),
 14.01.2016 [Gregg,Alan]
 1.e4 c5 2.c3 g6 3.d4 cxd4 4.cxd4 Bg7
 5.Nf3 d6 6.Nc3 a6 7.Be3 Nf6 8.h3 0-0
 9.Be2 b5 10.a3 Bb7 11.d5 Nbd7
 12.Rc1 Rc8 13.0-0 Nc5 14.Bd3 Nfd7
 15.Bb1 a5 16.b4 axb4 17.axb4 Na6
 18.Nxb5 [18.Qb3 ...is better, keeping
 White in charge.] 18...Nxb4 19.Qb3
 Diagram



19.Qa4! 19...Qa5 20.Nbd4 Nc5
 21.Qd1 Ba6 22.Re1 Ncd3 23.Rxc8
 Rxc8 24.Bxd3 Nxd3 25.Re2 Nc5
 26.Rc2 Nxe4 27.Rxc8+ Bxc8 28.Nc6
 [28.Qc2 Nc5 29.Nc6 Qa1+ 30.Kh2 Bf8
 31.Bxc5 dxc5 32.Qxc5 Qf6 33.Nxe7+
 Qxe7 34.Qxc8 Qd6+ 35.g3 Qxd5
 36.Kg2] 28...Qc7 29.Qa4 Nc3 30.Qc4
 Bb7 31.Nfd4 Nxd5 32.Qxd5 Bxd4
 [32...e5 Winning!] 33.Nxe7+ Qxe7
 34.Qxd4 Qe4 White has a centralized
 Q, and some nasty threats on the
 black squares with Bd2 and
 eventually Bc3, so Black decides to
 see if his opponent is paying
 attention to the cheap shot against
 g2! [LWR] 35.Qxe4 Bxe4 36.f3 Bc6
 37.Kf2 f6 38.g3 Kf7 39.f4 Ke6 40.Ke2
 Kd5 41.Bb6 Ke4 42.Kf2 d5 43.Ba5
 Bd7 44.h4 Bg4 45.Bb4 d4 46.Bc5 Kd3
 47.Ba7 Kc4 48.Bb6 Kd3 49.Ba7 Ke4
 50.Bb6 Kd3 51.Ba7 Kc3 52.Ke1 d3
 53.Be3 f5 54.Bd2+ Kd4 55.Kf2 ½-½

Bedy,Noel (1421) - West,Tony (1934)
 [A80] Dutch Defense 2016 PHCC
 Championships Port Huron (1),
 14.01.2016 [Gregg,Alan]
 This game was a surprise and will
 possibly win the prize for the biggest
 upset. Noel's USCF rating is 1421 and
 Tony's was 1934. A 500+ point

difference should have been an easy win for the higher rated, but Noel is difficult to play when he is on his game... as evidenced by this game, it was his day! I was unable to beat him last year, only drawing him. His greatest shortcoming appears to be inconsistency. 1.d4 f5 2.Bf4 Nf6 3.e3 e6 4.Nf3 Nc6 5.Bd3 d6 6.0-0 Qe7 7.Bb5 Bd7 8.Nc3 h6 9.d5 exd5 10.Nxd5 Nxd5 11.Qxd5 g5 12.Bg3 Diagram

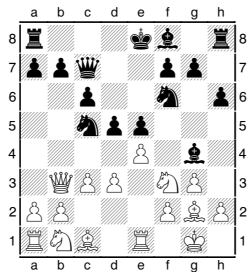


Tony is now winning but fails to find the best move. 20...Qxc2 [20...hxg2 21.Rf2 Kb8] 21.Rf2 ...White is back in charge! 21...Qc6 22.Qd3 Rdf8 [22...f4 23.exf4 Qc5 24.fxg5 Bxb2 (24...Bd4 25.f4) 25.Rd1] 23.Rc2 Qd7 24.Bxd6 Rd8 25.Rxc7+ Qxc7 26.Qxf5+ Qd7 [26...Kb8 27.Bxc7+ Kxc7 28.Qf7+ Rd7 29.Rc1+ Kd8 30.Qg6] 27.Rc1+ ... A very nice combination! 1-0

Gregg, Alan (1981) - Bedy, Noel (1421) [B01] Scandinavian Defense 2016 PHCC Championships Port Huron (2), 21.01.2016 [AMG] For the 2nd year in a row, I could only draw with Noel. Throughout the game neither player had a real advantage so a draw was a fair result. 1.e4 d5 2.exd5 Qxd5 3.Nc3 Qd6 4.d4 Nf6 5.Nf3 c6 6.h3 Bf5 7.Bd3 Bg6 8.Ne2 e6 9.Nf4 Be7 10.c3 Nbd7 11.Nxg6 hxg6 12.Qe2 Qc7 13.Ng5 Nh7 14.Nxh7 Rxh7 15.Bd2 0-0-0 16.0-0-0 Bd6 17.Kb1 Bf4 18.Be3 Bxe3 19.Qxe3 Nf6 20.g3 Rh5 21.Be2 Rhh8 22.h4 Nd5 23.Qg5 Qb6 24.Ka1 Qc7 25.Rhe1 Qe7 26.Qc1 Qf6 27.f4 Kb8 28.Bg4 Rhe8 29.Re5 Ne7

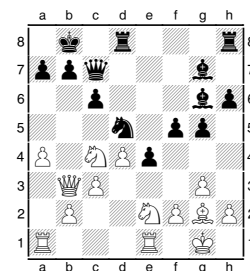
30.Rde1 Nf5 31.Bxf5 gxf5 32.Qe3 Rd5 33.Rxd5 cxd5 34.a3 Kc8 35.Qd3 Qd8 36.Qe2 g6 37.Qe5 Qe7 38.Rh1 f6 39.Qe2 e5 40.fxe5 fxe5 41.dxe5 Qxe5 42.Qxe5 Rxe5 43.h5 gxh5 44.Rxh5 Kd7 ½-½

Morabito, Matthew (1859) - Rutkofske, Lonnie (1800) [A07] Reti Opening 2016 PHCC Championships Port Huron (2), 21.01.2016 [LWR] Matt had won 4 of our last 5 championship games when I have had Black.... He is an aggressive tactical player and thrives on the initiative that he usually turns into some kind of advantage. I was determined to blunt his wanderlust by trying to take him out of his favorite Reti lines by closing the center and blunting his tactical opportunities. 1.Nf3 d5 2.g3 Bg4 3.Bg2 c6 4.0-0 Nd7 5.d3 h6 6.c3 Ngf6 7.Qb3 Qc7 8.Re1? I thought Bf4 now preventing e5 was much stronger! 8...e5 9.e4 A critical position here that presented me with quite a few chances to go wrong, so I thought for over 20 minutes to develop a plan that would blunt his tactical threats. Here his N is looking for a combination against e5, where he takes then if I retake, he has Bf4 then d4 winning a pawn. and opening up the center for against my vulnerable King. So I decided to drive away his Q and follow it up with pressure along the d file. 9...Nc5 Diagram



10.Qc2 dxe4 11.Nxe5 0-0-0 12.d4 Bf5 13.Bf4 Ne6 I had planned for this continuation, leaving White with few options, and the possibility of opening up his K-side. If 14. Ng6, Nf4 forcing the recapture but the N. If 15.Nh8?? Ng2 followed by Bd6 forces the N to take at f7 and White is woefully behind in development

and I will enjoy a multitude of attacking chances. 14.Ng6 Nxf4 15.Nxf4 g5 16.Ne2 Bg6 17.Qb3 Kb8 18.Nd2 Bg7 19.Nc4 Nd5 20.a4 f5 Diagram



At this point I am feeling very comfortable that I have withstood White's tactical shots and have the advantage. because his pieces have little scope. 21.Nc1 Bf7 22.Bf1 Rhe8 23.Na2 f4 24.Nb4 Nxb4 25.Qxb4 Bf8 26.Qb3 e3 27.Qc2 exf2+ 28.Qxf2 Bxc4 29.Bxc4 fxg3 30.hxg3 Bd6 31.Kg2 Rf8 32.Qe3 a6 33.Rf1 Rfe8 34.Qd3 Re7 Here I offered a draw, because with opposite-colored bishops, winning chances are at a premium after pieces are exchanged off. My major advantage is that my K is safe and his is exposed and most of his pawns are on dark squares. ½-½

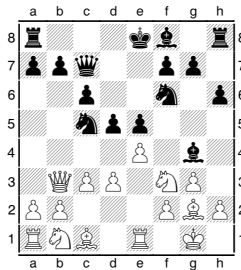
West, Tony (1934) - Jones, G. Avery (1566) [D78] Fianchetto Grunfeld 2016 PHCC Championships Port Huron (2), 21.01.2016 [LWR] 1.d4 d5 2.c4 c6 3.Nf3 Nf6 4.g3 g6 5.Bg2 Bg7 6.0-0 0-0 7.Nc3 dxc4 8.Ne5 Be6 9.e4 Nbd7 10.Nf3 Nb6 11.a4 a5 12.Qe2 Bg4 13.Rd1 Qc8 14.Be3 Qc7 15.h3 Bxf3 16.Bxf3 Rfd8 17.d5 Nfd7 18.dxc6 bxc6 19.Qc2 Ne5 20.Be2 Rd6 21.f4 Nd3 22.e5 Rdd8 23.Nb5 cxb5 24.Bxd3 Nd5 25.Qf2 Nxe3 26.Qxe3 Rxd3 27.Rxd3 cxd3 28.Qxd3 bxa4 29.Rd1 Qb6+ 30.Qd4 Qxd4+ 31.Rxd4 e6 32.Rxa4 Bf8 33.Rc4 Bb4 34.Kf2 Rd8 35.Rc2 Rd2+ 36.Rxd2 Bxd2 37.Ke2 Bb4 38.Kd3 h5 39.g4 hxg4 40.hxg4 Kg7 41.Ke4 f5+ 42.gxf5 gxf5+ 43.Ke3 Kg6 44.Kf3 Kh5 45.Kg3 Bd2 46.Kf3 Kh4 47.b3 Kh3 0-1

Heinrich,Chuck (619) - Boucher,David (1306) [A01] Larsen's Opening 2106 PHCC Championships Port Huron (2), 22.01.2016 [LWR] 1.b3 e6 2.Bb2 Nf6 3.e3 Be7 4.Nf3 b6 5.c4 0-0 6.Be2 Bb7 7.Qc2 c6 8.Qc3 d5 9.Na3 Ba6 10.0-0-0 Nbd7 11.g4 Nc5 12.d3 h6 13.h4 Ne8 14.g5 hxg5 15.hxg5 Bxg5 16.Nxg5 Qxg5 17.Rh5 Qg2 18.Rdh1 f6 19.Qe1 Qg6 20.Rh8+ Kf7 21.Bh5 Nxd3+ 22.Kd2 Nxe1 23.Kxe1? 23.Bg6+ was best! Even 23.Rf8+ was better. 23...Qxh5 24.R1xh5 Nd6 25.Rxf8+ Rxf8 26.cxd5 cxd5 27.Nc2 Rc8 28.Nd4 e5 29.Nf3 Rc2 0-1

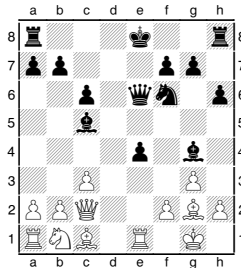
Morabito,Matthew (1859) - Rutkofske,Lonnie (1800) [A07] King's Indian Attack 2016 PHCC Championships Port Huron (2), 21.01.2016 [LWR]

Matt had won 4 of our last 5 championship games when I have had Black.. He is an aggressive tactical player and thrives on the initiative that he usually turns into some kind of advantage. I was determined to blunt his wanderlust by trying to take him out of his favorite Reti lines by closing up the center and blunting his tactical opportunities . 1.Nf3 d5 2.g3 Bg4 3.Bg2 c6 4.0-0 Nd7 5.d3 h6 [5...e6 6.Nbd2 Bd6 7.b3 Ne7 8.Bb2 0-0 9.h3 Bh5 10.e4 a5 11.a3 f6 12.d4 f5 13.e5 Bc7 14.c4 a4 15.b4 b5 16.c5 h6 17.Qc2 g5 18.Nh2 Kh8 19.Kh1 Qe8 20.Bf3 Bxf3+ 21.Ndx3 Qh5 22.Kg2 Rf7 23.Rh1 Rg8 24.Rag1 Qg6 25.Kf1 f4 26.Qxg6 Nxg6 27.g4 Bd8 28.Ke2 ½-½ (28) Sasikiran,K (2639)-Anand,V (2803) Berlin 2015] 6.c3 Ngf6 7.Qb3N [7.Nbd2 e6 8.Qc2 Bf5 9.Re1 Bc5 10.a4 a6 11.b4 Be7 12.Bb2 0-0 13.Rad1 Bh7 14.Qb3 Qc7 15.Rc1 Rfc8 16.Bh3 Qb6 17.a5 Qc7 18.c4 dxc4 19.Nxc4 Nd5 20.Ba3 Re8 21.e4 N5f6 22.Bb2 Rad8 23.Bg2 Qc8 24.Nfe5 Qc7 25.Qc3 Nxe5 26.Nxe5 Qd6 27.Qc5 Qc7 28.Qc4 Qd6 29.Bc3 Rf8 30.Nf3 Qxd3 31.Qb3 Qb5 32.Nd4 Bxb4 33.Nxb5 1-0 (33) Sibanc,B (1927)-Lazar,F Ptuj 2007] 7...Qc7 8.Re1? I thought Bf4 now preventing e5 was much stronger! 8...e5 9.e4 A critical position here that presented

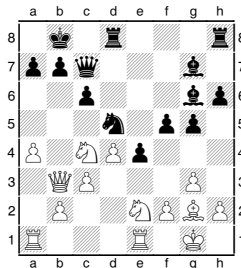
me with quite a few chances to go wrong, so I thought for over 20 minutes to develop a plan that would blunt his tactical threats. Here his N is looking for a combination against e5, where he takes then if I retake, he has Bf4 then d4 winning a pawn. and opening up the center for against my vulnerable King. So I decided to drive away his Q and follow it up with pressure along the d file. 9...Nc5 Diagram



10.Qc2 dxe4 11.Nxe5 0-0-0 [11...Qxe5 12.d4 Qe6 13.dxc5 Bxc5] Diagram



12.d4 Bf5 13.Bf4 Ne6 I had planned for this continuation , leaving White with few options, and the possibility of opening up his K-side. If 14. Ng6, Nf4 forcing the recapture but the N. If 15.Nh8?? Ng2 followed by Bd6 forces the N to take at f7 and White is woefully behind in development and I will enjoy a multitude of attacking chances. 14.Ng6 Nxf4 15.Nxf4 g5 16.Ne2 Bg6 17.Qb3 Kb8 [17...h5] 18.Nd2 Bg7 19.Nc4 Nd5 20.a4 f5 Diagram



At this point I am feeling very comfortable that I have withstood White's tactical shots and have the advantage. because his pieces have little scope. 21.Nc1 [21.a5] 21...Bf7 22.Bf1 Rhe8 23.Na2 f4 24.Nb4 Nxb4 25.Qxb4 Bf8 [25...Bd5 26.a5 e3] 26.Qb3 e3 27.Qc2 exf2+ [27...c5; 27...Bd5 28.fxe3 fxe3 29.e4 gxe2+ 30.Kh1 Qg3 31.Bd3 Qf3+ 32.Kxh2 Be6] 28.Qxf2 Bxc4 29.Bxc4 fxe3 30.hxg3 Bd6 31.Kg2 Rf8 32.Qe3 a6 33.Rf1 Rfe8 34.Qd3 Re7 Here I offered a draw, because with opposite colored bishops, winning chances are at a premium after pieces are exchanged off. My major advantage is that my K is safe and his is exposed and most of his pawns are on dark squares. ½-½

Wilkinson,Stewart (1880) - Wingrove,William (1606) [B52] Sicilian Defense 2016 PHCC Championships Port Huron (2), 25.01.2016

1.e4 c5 2.Nf3 d6 3.Bb5+ Bd7 4.Bxd7+ Qxd7 5.0-0 Nc6 6.d3 e6 7.Nc3 Nf6 8.Bf4 a6 9.e5 dxe5 10.Nxe5 Nxe5 11.Bxe5 Be7 12.Qf3 0-0 13.Ne4 Nxe4 14.dxe4 Rfd8 15.Rfd1 Qe8 16.Bc3 b6 17.Qg4 Bf8 18.f4 g6 19.f5 exf5 20.exf5 Rxd1+ 21.Rxd1 Bg7 22.fxe6 hxg6 23.Re1 Qd8 24.Bxg7 Kxg7 25.c3 Qd2 26.Qe4 Rf8 27.Re2 Qc1+ 28.Kf2 Qg5 29.Qe5+ Qxe5 30.Rxe5 Rd8 31.Ke2 Rd6 32.a4 Kf6 33.Re3 Re6 ½-½

Bedy,Noel (1421) - Boucher,David (1306) [C01] French Defense 2016 PHCC Championships St.Clair (3), 06.02.2016

1.e4 e6 2.d4 d5 3.Nc3 Bb4 4.exd5 exd5 5.Bd3 Nf6 6.Nge2 0-0 7.0-0 Nc6 8.Bg5 Be6 9.Qc1 h6 10.Bh4 Bd6 11.Nb5 Bxh2+ 12.Kxh2 Ng4+ 13.Kg3 g5 14.Bxg5 hxg5 15.f3 Nh6 16.Kf2 a6 17.Nxc7 Rc8 18.Nxe6 fxe6 19.Rh1 Qf6 20.Rh5 Rc7 21.Qxg5+ Qxg5 22.Rxg5+ Rg7 23.Rxg7+ Kxg7 24.c3 b5 25.Re1 e5 26.dxe5 Nxe5 27.Bb1 Nc4 28.Nd4 Rf6 29.b3 Nd6 30.Kg1 Ndf5 31.Nxf5+ Nxf5 32.Bxf5 Rxf5 33.Kf2 Rf6 34.Rd1 Rd6 35.Rd4 Kf6 36.g4 1-0

2023 Tentative Calendar of Events:

First Thursday of Each Month: Free Chess Clinics – 6:30 to 7:00 PM; **Private Lessons** can be arranged @ \$15/person per hour; **Open play:** 7:00 until 10:00 PM. Players wishing to play Challenge matches with longer time controls of G/60 with 5 sec delay can choose to play match games if they so desire. Participants will be required to follow the rules and regulations for **Challenge Play** (As outlined in **Chess Chatter**, our website under "Club Member Ratings Lists", or posted at the club.) and colors will be selected by lot. PHCC club ratings will be used. Players should turn their game scores into Lon, so he can adjust ratings appropriately and showcase the games in **Chess Chatter**. **Monthly Tournaments** will be held, **usually** on the third Thursday of the month - See the events schedule below for specifics!

2023 PHCC Championships – Begin January 19, 2023

January 19- April 13, 2023 -The final format for the 2023 Club Championships will be determined by the number of pre-tournament entries, so please contact Lon by Thursday, Jan.5, 2023 to register for the event. The tournament will be held between January 19- April 13, 2023 and format, rules and appropriate details will be emailed and published to the website for those that pre-register.

March - Port Huron Area Schools District Tournament – At Port Huron High School - 9am-1pm – seeking PHCC volunteers - see flyer in January Issue of Chess Chatter

May 18th - PHCC Rated Action Quads (or Mini-Swiss depending on registration) G/10 EF: \$5.00 ...Prizes based on entries. A minimum of 4 participants will be necessary to hold the event. Please contact Lon via phone or email if you plan to register. Onsite registration 6:30-7:00PM - Play begins at 7:00 PM. Prizes: if Quad: 1st = \$15; if Mini-Swiss: Based on entries! (Recording games is optional, for players that wish to keep score, neither player is required to keep score if either has 5 minutes or less on their clock.)

June 15th - PHCC Rated Action Quads (or Mini-Swiss depending on registration) G/10 EF: \$5.00 ...Prizes based on entries. A minimum of 4 participants will be necessary to hold the event. Please contact Lon via phone or email if you plan to register. Onsite registration 6:30-7:00PM - Play begins at 7:00 PM. Prizes: if Quad: 1st = \$15; if Mini-Swiss: Based on entries! (Recording games is optional, for players that wish to keep score, neither player is required to keep score if either has 5 minutes or less on their clock.)

July 20th - USCF/PHCC Rated Action Quads (or Mini-Swiss depending on registration) G/25 with 3 sec. delay EF: \$5.00 ...Prizes based on entries. A minimum of 4 participants will be necessary to hold the event. Please contact Lon via phone or email if you plan to register. Onsite registration 6:30-7:00PM - Play begins at 7:00 PM. Prizes: if Quad: 1st = \$15; if Mini-Swiss: Based on entries! (Recording games is optional, for players that wish to keep score, neither player is required to keep score if either has 5 minutes or less on their clock.)

August 10, 17, 24 – USCF/PHCC Rated Mini-Swiss (or Quads based on entries) 3 Round- USCF Rated Mini-Swiss. Game/90 minutes with/5 sec. delay. USCF and PHCC membership required. One game per night (August 10, 17 & 24)! Play will begin at 7:00PM. EF: \$5.00 Play will begin at 7:00PM. A minimum of 4 participants are required. Prizes: based on entries. Please register in advance by contacting Lon Rutkofske by August 4th so he can determine if there are enough entries to hold the event.

September 21st – PHCC Rated Thematic tournament: G/25 with 3 sec. delay EF: \$5.00 ...Prizes based on entries. A minimum of 4 participants will be necessary to hold the event. Please contact Lon via phone or email if you plan to register. Onsite registration 6:30-7:00PM - Play begins at 7:00 PM. Prizes: if Quad: 1st = \$15; if Mini-Swiss: Based on entries! (Recording games is optional, for players that wish to keep score, neither player is required to keep score if either has 5 minutes or less on their clock.) Players with the white pieces will be playing a game with a predetermined opening sequence such as the Ruy Lopez, or KI Attack based on one of the openings drawn at random by the TD. The game will begin from that opening position.

October 19th PHCC Speed Championships - The Port Huron Chess Club's 40th Annual Speed Championship Tournament will be held on Thursday, October 19th beginning at 7:00 PM. Registrations will determine the number of rounds and prizes. PHCC membership required. Entry fee will be \$5.00. Please contact Lon if you plan to play. There will be no registrations on-site. If you intend to play, contact Lon before October 14th. (Will be USCF rated if all entrants are USCF members.)

November 16th – PHCC Rated Quick Tournament DRR Game/15 PHCC Rated Action Quads (or Mini-Swiss depending on registration) EF: \$5.00 ...Prizes based on entries. A minimum of 4 participants will be necessary to hold the event. Please contact Lon via phone or email if you plan to register. Onsite registration 6:30-7:00PM - Play begins at 7:00 PM. Prizes: if Quad: 1st = \$15; if Mini-Swiss: Based on entries! (Recording games is optional, for players that wish to keep score, neither player is required to keep score if either has 5 minutes or less on their clock.)

December 14th – Bughouse Tournament – Details to follow in November.

Ratings:

The following list represents only current members of the Port Huron Chess Club. Current USCF ratings were used for members that had them, to establish the initial club rating list. The USCF rating format is used as the basis for calculating our club rating list. Members that had no USCF ratings are *given* a provisional rating based on their performances against regular club members who had USCF ratings. Club rated events will use these ratings for pairing purposes.

PHCC Ratings as of 12/20/22

<u>Name</u>	<u>Rating</u>
Avdic, Huso	2100
Gregg, Alan	1922
Morabito, Matt	1830
Rutkofske, Lon	1758
Urlick, Ryan	1874
Broyles, Tom	1700
Young, William	1640
Jones, G. Avery	1561
Wingrove, Bill	1480
Malburg, Drew	1468
Ledsworth, Brian	1400
Beneker, Gerrit	1380
Bryne, Brandon	1294
Schmidt, Mark	1216
Yager, Jacob	904

PHCC Blitz Ratings as of as of 12/20/22

<u>Name</u>	<u>Rating</u>
Avdic, Huso	2133
Gregg, Alan	1967
Urlick, Ryan	1883
Morabito, Matt	1800
Rutkofske, Lon	1723
Broyles, Tom	1708
Klaty, Braeden	1694
Young, William	1640
Wingrove, Bill	1519
Jones, G. Avery	1517
Klaty, Trenton	1381
Bryne, Brandon	1365
Beneker, Gerrit	1354
Ledsworth, Brian	1317
Klaty, Brad	1314
Schmidt, Mark	1216
Malburg, Drew	1021

USCF Ratings as of 12/20/22

<u>Name</u>	<u>Rating</u>
Avdic, Huso	1945
Alan Gregg	1934
Rutkofske, Lon	1800
Morabito, Matt	1780
Wingrove, William	1558
Klaty, Braeden	1506
Malburg, Drew	1471
Ledsworth, Brian	1308
Klaty, Brad	1285/P10
Klaty, Trenton	1080/P10

USCF Quick/Action Ratings as of 12/20/22

<u>Name</u>	<u>Rating</u>
Avdic, Huso	1986
Morabito, Matt	1908/P
Gregg, Alan	1899
Rutkofske, Lon	1775
Wingrove, William	1510
Klaty, Braeden	1455
Klaty, Brad	1339/P7
Rood, Eric	1321
Klaty, Trenton	1091/P7
Bryne, Brandon	1202
Ledsworth, Brian	1058

USCF Blitz Ratings as of 12/20/22

<u>Name</u>	<u>Rating</u>
Avdic, Huso	2037
Gregg, Alan	1861
Morabito, Matt	1732
Rutkofske, Lon	1612
Rood, Eric	1578
Klaty, Braeden	1541
Byrne, Brandon	1441
Ledsworth, Brian	1317
Klaty, Trenton	1350
Klaty, Brad	1267
Malburg, Drew	1203

Dues News:

While dues are not required for anyone interested in playing at the club, they are required for those competing in tournament play. Annual Dues are \$20.00 for adults and \$10.00 for those under 19. Dues funds are used to offset miscellaneous expenses not funded by the Recreation Department. United States Chess Federation memberships are available through the club. Memberships expiring in January 2023: Broyles, Tom; Gregg, Alan; Jones, George Avery; Malburg, Drew; Morabito, Matt; Rutkofske, Lon; Wingrove, Bill.