



Chess Chatter

Newsletter of the Port Huron Chess Club

Editor: Lon Rutkofske January 2011 Vol.30. Number 1

The **Port Huron Chess Club** meets Thursdays, except holidays, from 6:30-10:00 PM, at Palmer Park Recreation Center, 2829 Armour Street, (NE corner of Garfield Street and Gratiot Ave...1 mile North of the Blue Water Bridge) Port Huron, Michigan. Everyone is welcome. All equipment provided. Website: <http://porthuronchessclub.volasite.com/>

We have met the enemy, and they are US!

After frustrating discussions *ad infinitum* with fellow PHCC regulars constantly asking the truly "\$64,000 Question" (Pardon the 20th Century allusion which dates us old guard . Probably - "Who wants to be a millionaire?" would have been a more relevant clue!) What will it take to generate "new blood" to revive the PHCC? What struck me, while pondering this perennial conundrum was the realization that perhaps our problem is not – **THEM** (Tentative Hopefully Enthusiastic Members), but rather **US** (Uninspired Stalwarts) that has emerged as the crux of the attendance stagnation issue. Musing endlessly on this topic, PHCC elders have resorted to nearly every conceivable gimmick, trick, head stand, TV or trip give-away, short of unabashed bribery (We're even considering that now!), to encourage turnout. While a few former members trickle in from time to time, truly new members come few and far between and seldom return after a visit or two.

Perhaps some deeper introspection is required. A serious pitfall of any institution is organizational inbreeding – failing to keep fresh ideas flowing through its circulatory system. One major "epiphany" the USCF and most especially, the Continental Chess Association experienced, centered around an analysis of their financial bases and the realization that the majority of the chess playing public was below the 1600 performance rating level. This vast group provided the bulk of the revenue for the minority of its higher rated brothers. With this in mind, both organizations began to cater to this segment by expanding specialized tournaments with increased sections per tournament, providing a greater return for the investment in time and money in the form of more class tournaments, shorter time controls, increased prize payouts, and improved recognition.

With this image fresh in our minds, perhaps it is time to apply this lesson to our own situation. Why not offer increased lower level, even rated tournaments for the under 1600 crowd? Provide more monthly tournaments with larger prizes/place trophies, and reduce casual play to a single night each month. Advertise heavily in local school districts. Have the top players run the tournaments, perhaps even several different sections simultaneously, rather than have novice players slog it out against the club's elite once a month? While the short term will certainly negatively impact this elite few, perhaps long term, the benefits of improved attendance and rising membership will be a boon to us all!

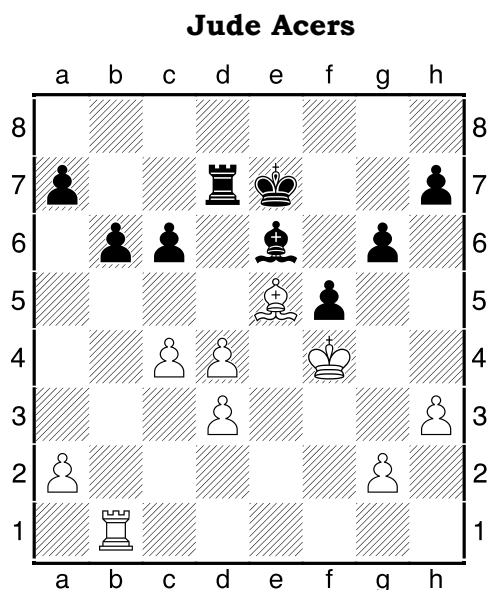
Club Champs begin January 6th 2011

The 2011 PHCC championships are due to commence on Thursday, January 6, 2011 at Palmer Park Recreation Center beginning at 7:00 PM. This year's tournament will consist of a 5 round Swiss System Tournament, with one game to be completed every other week. In light of last year's turnout, this year's event will feature one more round, in order to provide a more rigorous road to the crown. Tentatively, rounds will be Jan. 6th & 20th; February 3rd & 17th, with the final round commencing on March 3rd. The awards ceremony will be scheduled for Thursday, March 10th. Details and rules of play will be posted on the club website and will be forwarded to all those on the mailing list at the end of December. This year's tournament will feature a considerable prize fund based on a minimum of 10 participants: First Place = \$100; Second = \$50; Top under 1600 = \$50. Upset prize = \$20. Of course there will be trophy/plaques to go along with each of the class prizes. We hope that this may generate some great competition and rigorous play. Register with Lon by email, phone or at the club!

Hey Jude!

My trip to New Orleans for my son's wedding proved a boon in more than one way. Not only did I get a new daughter, partake in the myriad of fine cuisine at restaurants like the Court of Two Sisters, Emeril's, and Antoin's, but I was able to visit with Jude Acers as he played chess at his usual spot near the Gazebo Cafe on Decatur Street. I actually witnessed one of his rare defeats at the hands of a much younger player in a ten minute contest that actually saw him lose a game with bishops of opposite color!

November 13, 2010



Youthful Opponent



This is not "THE" Youthful Opponent!

His young opponent offered a draw in this position, but he refused, since he had a major time advantage. While I cannot recall the exact moves, Jude declined the draw offer in hopes his youthful opponent would falter. Jude's idea was to move to the K-side and push his majority there. His worthy adversary launched an all out attack against the Q-side, penetrating with his K, sacking his R for a pawn, ending up with

tripled pawns but queening one of them, mating Acers on c8 with seconds left on his clock. It was quite an entertaining game. When I sat down, paid out my 5 bucks to play, chatted briefly about his trips to Port Huron, he remained stone-faced but cordial, and proceeded to demolish me with a 4 pawns attack against my feeble KI Defense. Tipping his head, topped by the trademark red beret, he said that he enjoyed his trip to the great north, but from that point, he was all business...since this is his livelihood, he finished me off in short order, making me feel like the patzer I guess I really am. At any rate, I enjoyed the encounter, the beautiful weather, and the bustle of the busy street around us. If you ever visit New Orleans, a stop at the French Market on Decatur Street is a must.

Post Mortem - Final Thoughts on Phil Willard

Shortly following Phil's passing, his wife, Jean, forwarded me a copy of a letter she composed addressed to "Friends and Family". A significant part of that letter was devoted to the PHCC, and I felt it only fitting that members of the club be privy to the wonderful words that Jean conveyed in her final recollections of Phil:

At our house, dinner always had to be early on Thursday evening so Phil could join his chess buddies at the club. They happily accommodated him as his legs got weaker, but his chess challenges became sneakier. I still recall his elation a year ago when he announced his rare victory over Lon Rutkofske. The Chess chatter newsletter of December, 2009 boasted, "Probably the most notable anomaly of the evening was Phil Willard's annihilation of Lon Rutkofske in the final round...it took the 'Amazing Willadore' just 19 moves to pulverize Lon into submission." ...not surprisingly, Phil passed his 'chess nut' abilities on to his sons and grandsons.

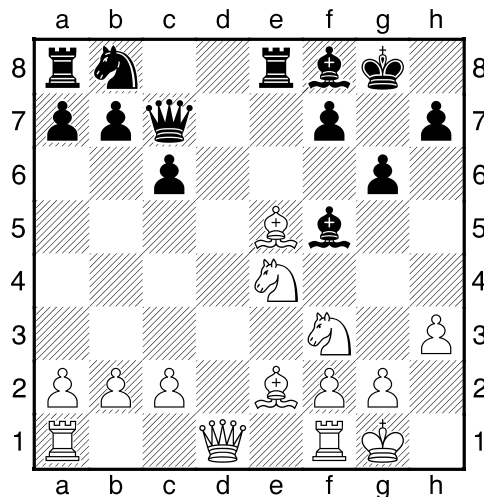
I am privileged to present that game:

Willard,Phil 1514 - Rutkofske,Lon 1928

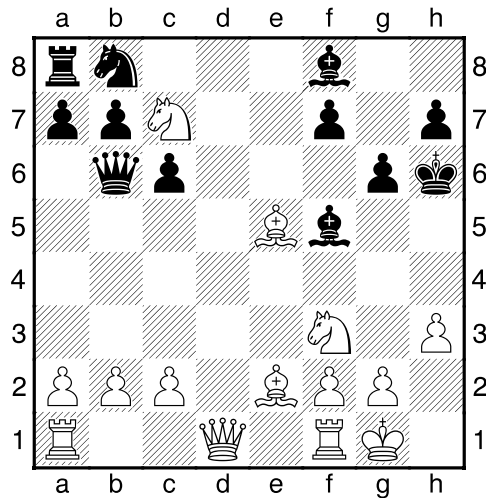
King's Indian Defense

Rd 3 - G30 Port Huron Chess Club, November Quad - 12.11.2009

1.d4 Nf6 2.Nc3 g6 3.e4 d6 4.h3 Bg7 5.e5 dxe5 6.dxe5 Bd7 7.exf6 Bxf6 8.Nf3 0-0 9.Bd2 e5 10.Bb5 c6 11.Be2 Qc7 12.Bg5 Bg7 13.0-0 Re8 14.Ne4 Bf5 15.Bf6 Bf8 16.Bxe5 Diagram



16...Qb6 17.Nf6+ Kg7 18.Nxe8+ Kh6 19.Nc7 Diagram



1-0

Jingle Bells Double Round Robin Tournament Results

Name	Rating(Pre/post)	1	2	3	4	Total
Rutkofske, Lon	1949/1974	x	2	2	2	6
Gregg, Alan	2000/1971	0	x	1	2	3
Wingrove, Bill	1625/1627	0	1	x	1	2
Jones, Avery	1485/1487	0	0	1	x	1

Members' Games

Please send me what you consider your best games, annotated or not, so that I might be able to showcase them. The following games represent contests that have been available at the time of this printing. Email them to me or give them to me personally, if you wish. Majority of analysis done by Fritz 12, unless otherwise indicated.

Rutkofske,Lonnie (1876) - Broyles,Tom (1737) [A02] Bird's Opening

Casual Game St. Clair Chess Club, 24.10.2010

1.f4 Nc6 2.g3 e5 3.fxe5 Nxe5 4.Bg2 Nf6 5.Nf3 Nfg4 6.d4 Nc4 7.Qd3 Nb6 8.h3 Nf6 9.0-0 d6 10.e4 Be7 11.Ng5 h6 12.Nxf7 Kxf7 13.e5 dxe5 14.dxe5 Qxd3 15.cxd3 Rd8 16.exf6 Bxf6 17.Nc3 Rxd3 18.Bxh6 c6 19.Ne4 Nd5 20.g4 b6 21.Bg5 Ba6 22.Rf2 Re8 23.Nd6+ Kf8 24.Bxd5 Rxd5 25.Nxe8 Rxc5 26.Nxf6 gxf6 27.Rxf6+ Ke7 28.Rxc6 Kd7 29.Rc2 Rd5 30.Re1 Rd3 31.Kh2 Bc8 32.Rec1 Ba6 33.Rc7+ Ke6 34.R1c2 Bb5 35.Rxa7 1-0

Rutkofske,Lon (1876) - Broyles,Tom (1737) [A03] Bird's Opening

Casual Game St Clair CC , 04.12.2010

1.f4 d5 2.Nf3 Bg4 3.e3 Nc6 4.Be2 Nf6 5.0-0 e6 6.b3 Bc5 7.a4 Qd6 8.c3 a6 9.h3 Bh5 10.Kh2 g5 11.d4 Ba7 12.Ba3 Qd7 13.Nxg5 Bxe2 14.Qxe2 Ne4 15.Qh5 Nxg5 16.fxg5 Nd8 17.Nd2 Rc8 18.Nf3 c5 19.Ne5 Bb8 20.Qh6 Bxe5+ 21.dxe5 Nc6 22.Bxc5 Na5 23.Bd6 Rc6 24.Qf6 Rxd6 25.Qxh8+ Ke7 26.Qf6+ Ke8 27.exd6 Qxd6+ 1-0

Rutkofske,Lonnie (1876) - Wingrove,Bill (1694) [C42] Petroff's Defence

Casual Game St.Clair CC, 04.12.2010

1.e4 e5 2.Nf3 Nf6 3.Bc4 Nxe4 4.Bxf7+ Kxf7 5.Nxe5+ Ke6 6.Qg4+ Kxe5 7.d4+ Kd6 8.Bf4+ Kc6 9.d5+ Kb6 10.Na3 Bxa3 11.bxa3 Nd6 12.Rb1+ Nb5 13.a4 a6 14.axb5 axb5 15.Be3+ c5 16.dxc6+ Kxc6 17.0-0 d5 18.Qb4 Na6 19.Qxb5+ Kd6 20.Bf4+ Ke6 21.Rfe1+ Kf7 22.Re5 Qd7 23.Qd3 Re8 24.Rxd5 Qe7 25.Re5 Be6 26.Qxh7 Rh8 27.Qe4 Nc5 28.Rxc5 Qxc5 29.Rxb7+ Kf6 30.Be3 Qf5 31.Bd4+ Kg5 32.Rxg7+ Kh5 33.g4+ 1-0

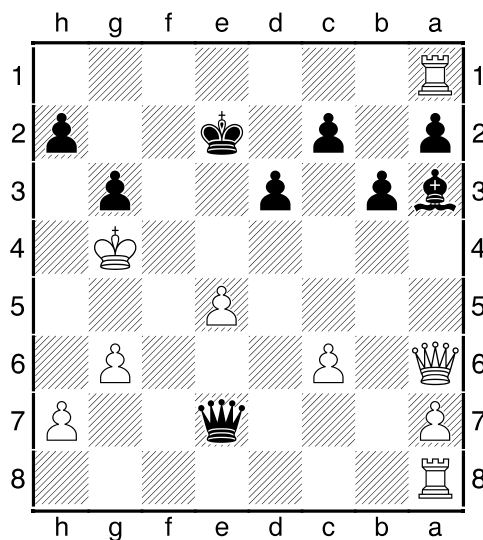
Nadasky,Joe (UNR) - Rutkofske,Lon (1876) [B01] Scandinavian Defence

Casual Game S. CLair CC, MI, 04.12.2010

1.e4 d5 2.e5 c5 3.d4 Bf5 4.Nf3 e6 5.Bb5+ Nc6 6.Bxc6+ bxc6 7.0-0 Qb6 8.a4 h6 9.b3 cxd4
10.Nxd4 Bh7 11.Na3 a6 12.Be3 c5 13.Nf3 Ne7 14.c4 d4 15.Bf4 Nc6 16.Nb1 Be7 17.Nbd2 0-0
18.Re1 Nb4 19.Rc1 Nd3 20.Ne4 Nxf4 21.g3 Nh3+ 22.Kg2 Ng5 23.Nfxg5 hxg5 24.Qg4 Qc6
25.Kg1 Rad8 26.Nxg5 Bxg5 27.Qxg5 Qf3 28.Ra1 Be4 29.Kf1 d3 30.Rxe4 Qxe4 31.Re1 Qh1# 0-1

Alan and I reached the following position in a G/10 game played recently at the club. It is Black's move, as he sacrificed his R on h8 for an attack on the White K. Will Black be able to win this, or can White survive, and go on to win with his overwhelming advantage. The game was declared a draw because we both ran out of time, and didn't realize it! Believe it or not, this position emerged from a rather odd French Defense. See Feb. 2011 **Chess Chatter** for Fritz12's assessment.

Gregg,Alan - Rutkofske,Lon G/10 Casual Game PHCC, 21.11.2010



Black to play and win???

Morabito,Matthew (1905) - Kitts,Gary (2000) [C02] French Defense

Lansing (MI Op/3/23), 1996

1.e4 e6 2.d4 d5 3.e5 c5 4.c3 ♘c6 5.♘f3 ♚b6 6.♙d3 ♙d7 7.dxc5 ♙xc5 8.0-0 a5 9.♘bd2 f6
10.exf6 ♘xf6 11.♘b3 0-0 12.♘xc5 ♚xc5 13.♞e1 ♘g4 14.♙e3 ♚d6 15.♙xh7+ ♔h8 16.♙c2
♞ae8 17.♚d3 ♘f6 18.♙g5 e5 19.♘h4 e4 20.♚g3 ♚xg3 21.hxg3 ♔g8 22.♘g6 ♞f7 23.♙e3 ♘e5
24.♘xe5 ♞xe5 25.♙b3 ♙e6 26.♞ad1 ♔f8 27.f3 exf3 28.♙c5+ 1-0

Blasts from the Past



2177 Michigan, Eaton Rapids, Mich. 48827

V.E. Vandenburg, Editor (517) 646-6142

Published by the MICHIGAN CHESS ASSOCIATION

June 18, 1984

LONNIE RUTKOWFSKE

Dear Lon:

Many thanks to you and the Port Huron Chess Club for the very fine plaque you awarded me for "Outstanding Michigan Chess Promoter - 1984". And for the free entry in the tournament.

This is one of the finest service awards I have ever seen in chess.

But in addition to that, you let me win the Class C 1st place prize in the 5th Port Huron Open--and that was an outstanding trophy. I cannot recall seeing better looking tournament class trophies. Your club is to be commended.

And then you let me win the raffle, too!

It certainly was a fine tournament for me, and I'll probably never have such a weekend again with so many prizes. In fact, I seldom win any prize--but playing is still fun.

But even that wasn't all. I enjoyed the hospitality of Phil Willard, who invited Floyd Ferguson and me to stay at his place that Saturday night. It was another high spot!

Your tournament, with its excellent facilities, fine management and very good directing, deserved a bigger attendance. A lot of people missed a fine event. But tourney attendance isn't all that it might be these days, as you can see by the reports in MICHIGAN CHESS. Even the Michigan Class Championships drew only 65, with not enough in any class to pay the full prizes (24 needed, and only 14 in A.&B, 15 in D/E/Unr. Class C had 22. I got only 2 points. Our Lansing Mini-Swiss here yesterday, with \$50 & \$30 per section (best mini prizes in the state) got only 16 entries!

However, I expect things to pick up. At least we are having lots of tournaments in Michigan.

Good luck to you and your club--and say hello for me to the other guys.

PS: Thanks for the prompt tourney reports, too. If you get a USCF cross-table, could I have a photo-copy?

Sincerely
V.E. Vandenburg

PHCC Rating List

The following list represents only current members of the Port Huron Chess Club. Current USCF ratings were used for members that had them, in order to establish the initial club rating list. The USCF rating format is used as the basis for calculating our club rating list. Members that had no USCF ratings are given a provisional rating based on their performances against regular club members who had USCF ratings. Club rated events will use these ratings for pairing purposes.

PHCC Rating List as of 12/15/10		USCF Ratings as of 12/15/10	
Name	Rating	Name	Rating
Gregg, Alan	1939	Gregg, Alan	2000
Rutkofske, Lon	1905	Rutkofske, Lon	1876
Morabito, Matt	1760	Fiedler, Robert	1769
Petty, Michael	1740	Broyles, Tom	1737
Broyles, Tom	1736	Morabito, Matt	1725
Fiedler, Robert	1725	Petty, Michael	1703
Wingrove, Bill	1707	Wingrove, Bill	1694
Bedy, Noel	1628	Jones, G. Avery	1671
Duncan, Bob	1595	Dean, Joel	1615
Dean, Joel	1560	Bedy, Noel	1517
Berthen, Dale	1537	Duncan, Bob	1497
Scholfield, Chris	1503	Chan, Jaime	1447
Willard, Mark	1500	Trombley, Cody	1278
Jones, G. Avery	1469	Boucher, Dave	1277
Mark Fitchett	1460	Mireau, Nathan	1050
Chan, Jaime	1452	Jachcinski, Michael	987
Boucher, Dave	1322		
Jachcinski, Michael	1016		
Tuttle, Aaron	498		

PHCC Speed Rating List as of 12/15/10	
Name	Rating
Rutkofske, Lon	1974
Gregg, Alan	1971
Petty, Michael	1763
Broyles, Tom	1708
Duncan, Bob	1693
Morabito, Matt	1668
Fiedler, Robert	1640
Wingrove, Bill	1627
Dean, Joel	1592
Jones, G. Avery	1487
Mark Fitchett	1444
Bedy, Noel	1440

Calendar of Coming Events:

Registration for all events begins at 6:30 PM or via email, first round begins at 7:00 PM.

Jan. 6th PHCC Championships – 5 Rd. Swiss – G/90 - EF: A: \$5.00, Under19: \$2.00 Game every other Thursday: Rounds – Jan6,20; Feb. 3,17; Mar. 3.

Dues Increase: The Port Huron Chess Club will begin to collect dues for the coming year. While dues are not required for anyone interested in playing at the club, they are required for those competing in tournament play. Annual Dues are \$20.00 for adults and \$10.00 for those under 19. Dues funds are used to offset miscellaneous expenses not funded by the Recreation Department. **This is the first time since 1970 there has been a dues increase. Funds will be used to help fund tournament play and supplement prize funds and offset USCF expenses for rated Tournaments.**