



# Chess Chatter

Newsletter of the Port Huron Chess Club

---

**Editor: Lon Rutkofske**    **March 2011**    **Vol.30.**    **Number 3**

---

The **Port Huron Chess Club** meets Thursdays, except holidays, from 6:30-10:00 PM, at Palmer Park Recreation Center, 2829 Armour Street, (NE corner of Garfield Street and Gratiot Ave...1 mile North of the Blue Water Bridge) Port Huron, Michigan. Everyone is welcome. All equipment provided. Website: <http://porthuronchessclub.volasite.com/>

---

## O+ !!!

Things appear to be taking a positive turn for the PHCC as Lon and Alan have initiated a series of chess lessons, geared to encourage an infusion of some youthful energy into the ranks of the PHCC. Since the end of January, a hearty troupe of young chess enthusiasts, spearheaded by **Gabriel** and **Syeda Ferguson** have been attending bi-monthly chess lessons hosted by **Lon Rutkofske** and **Alan Gregg**, in between rounds of the club championships.

This entourage of eager chess players, mostly from the ranks of Thomas Edison elementary school's chess club, have been regulars at our chess clinics, in an effort to improve their games and learn as much as they can before the chess tournament to be hosted by the Port Huron Area School District on Saturday, March 26<sup>th</sup> open to all PHASD students (See flyer in the February Newsletter). Members of the PHCC traditionally serve as arbiters/judges, manning the floor at this annual event ably directed by the late Phil Willard's son, and former PHCC junior champion, Jeff, a district educator and chess coach. **Jeff Willard** has successfully taken this tournament, begun by **Lon Rutkofske** with a meager 30 entrants in 1997 to a monster event of over 150 students annually.

This group of 5 to 6 youngsters has been busy learning the basics of chess notation, chess strategy, the essentials of mating with minor pieces, solving chess problems, and the myriad of other fundamentals crucial to improved chess performance. And to boot, they seem to be having FUN, too!

One late January evening, the entire **Velez** family – dad: **Antonio**, mom: **Violet**; and daughters: **Ester** and **Evangelina** dropped by to learn more about the PHCC, and chess in general, participating in our first ever “family style” lesson.

We look forward to building on this youthful interest by hosting tournaments and continuing our monthly clinics after our championships are over in March. Hopefully, our new schedule of events, which feature competitive opportunities the last three Thursday's of every month will become popular with this youthful crowd and bring in the “new blood” that will eventually become the life force of the future PHCC.



L-R : Gabe Ferguson, Cullen Wiley & Carter Schrader.



Seven year old Marquez Elash receives his first formal lesson from 2010 MI Senior Champ, Alan Gregg.



Cullen Wiley observing his first timed tournament game.



L-R : Carter Schrader, Gabe Ferguson & Cullen Wiley enjoying their first timed round robin.

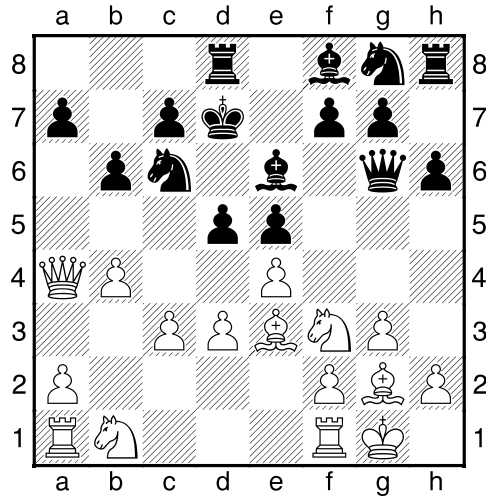
The analyses below represent the results of a homework assignment given by **Lon Rutkofske** in an effort to help students develop their skills in transcribing algebraic chess notation, and understanding the importance of how recording and analyzing their games can contribute to improving their chess prowess.

### **Ferguson,Syeda (Mom) - Ferguson,Gabriel (Son) [C2] Unusual King Pawn**

**Openings** Homework assignment-game recording, 02.02.2011 [Analyses by Lon Rutkofske]

**1.e4 e5 2.d3 d6 3.g3 Nc6 4.Bg2** This move shows a good understanding of controlling the center from the wing (Called a fianchettoed Bishop)...right out of the hypermodern school of chess theory. Both players seem to be approaching the game with caution, but are making moves to carve out their share of the center. **4...Be6 5.Nf3 b6?** Here Black's move doesn't contribute to development, nor control of the center, and instead creates a myriad of holes (a6 and c6) that now need to be protected. Much better would have been the developing move of 5...,Nf6 or even 5...,Be7. **6.0-0 Qf6** Here Black violates one of the primary principles of chess development by moving his queen out much too early and in doing so, leaves her majesty a target of White's QB. **7.Bg5** A very sound move that forces the Black Queen to a poor square and wastes a precious tempo ( time). Since White has the first move, Black can ill afford to waste this precious commodity. **7...Qg6 8.c3** A very subtle move because it provides the White Queen with avenues to attack the weakness created by Black's 4th move. It also seizes more

central squares. **8...h6 9.Be3** A safe, yet centrally located retreat, now aiming at a possible Q-side castle for Black. **9...0-0-0 10.Qa4** A superb move that punishes Black for creating all of the weaknesses in his Q-side, and threatens an all out Q-side assault. Notice that most of White's pieces are now aimed at a very insecure Black King? **10...Kd7??** A serious mistake. Kb7 was much stronger and safer, or even Bd7 holds things together nicely and forces the Q to find refuge from an eventual Na5. The text creates a huge log jamb in the center and makes the Black monarch vulnerable to d4 and d5 pushes by White. **11.b4** A better plan would have been 11.d4 attacking the wayward Black King immediately. If 11...Qxe4???? then 12.Nh4, or KNd2 is crushing because now the Black Queen must move and then White wins a piece with 13.QxN check! **11...d5??** Diagram



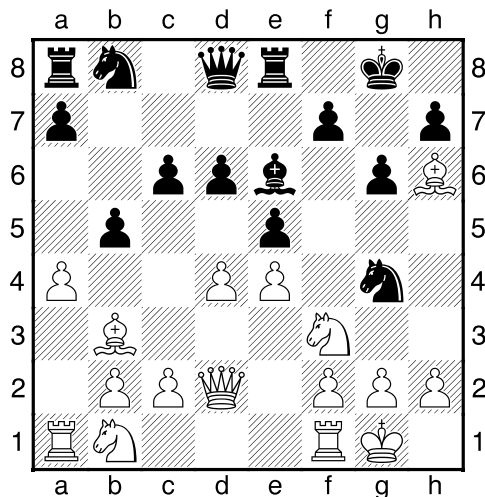
A fatal blunder that allows 12.Nxe5 check, forking the K and Q since Black's QN is pinned. It is usually fatal to open up the center to exchanges especially when your King will be in peril! **12.b5??** Missing the killer move 12.Nxe5+!!! **12...Nd4** Best is 12...Ne7 or Nb8 or even Na5...at any rate, any N move permits the fatal fork at e5!! **13.exd5** At this point there were errors in notation, so it was difficult for me to reconstruct the remainder of the game, but I hope that Black can see that the majority of his problems began when he violated the most basic chess opening principles of not developing his minor pieces, developing his queen too early and moving non-central pawns. White on the other hand, developed sensibly and needs to concentrate on taking advantage of Black weaknesses by carefully reviewing each of her opponent's moves to see if opportunities for advantage are present...as you can see...after 11...d5???, it was all over!!! This was a homework assignment that I gave students from my chess class. Gabe did an admirable job initially, and probably got a bit excited when things got complicated and made some notation errors, but not bad over all. This is the real way a player improves. Analyzing your mistakes in chess, math, or any area is always the best way to make improvement, because one begins analysis earlier, and learns valuable lessons that will prevent future errors! Always remember that everyone makes mistakes, but a foolish person continues to make the same mistakes more than once!!! **1-0**

### **Ferguson,Syeda - Ferguson,Gabriel [A40]**

Homework game - recording practice, 02.02.2011 [Analyses by Lon Rutkofske]

**1.d4 e5 2.e3?** Black just gives up his KP for nothing, and White doesn't take it. Best is 2.de! taking the wayward pawn immediately. Now Black has no good square for his KN and must find a way to get his Pawn back. Sometimes giving a pawn away in the opening is called a gambit, and in most cases the player offering the gambit pawn is trying to translate his loss of material for another type of advantage, such as a gain in time, seizing the initiative, or for positional considerations. But in this case, it is just a mistake. **2...d6 3.Bb5+** Here White chooses a inferior move because the text move loses not only a tempo because it is forced to retreat, but violates an important principle about moving the same piece more than once

during the opening. The text also permits the possibility of Qa5+ winning the wayward clergyman if White isn't careful! **3...c6 4.Ba4 b5** And the B is forced to move yet a 3rd time...a real opening no-no! **5.Bb3 Nf6 6.Nf3 g6 7.Bd2 Bh6** This B belongs fianchettoed on g7! It really serves no purpose here, whereas at g7 it protects the K and will exert pressure on the central squares. I wonder what Black's plan is here? **8.0-0 0-0 9.e4 Be6** Oops! Always watch what your opponent does before you move. Most games are lost because the person on the move is too preoccupied with his/her plan, and ignores what threats their opponent may have up their sleeves. As you can see, had Black put his KB on g7... 9...,Be6 would have been a good centralizing move. **10.Bxh6 Re8 11.a4 Ng4** A nice try at regaining the piece. **12.Qd2** Diagram



A superb move, because it develops and protects the Bishop on h6 and prevents the loss of a tempo. I also keeps control of the h6-c1 diagonal and provides a future route for the invasion of the Q to h6. **12...b4** Again, a waste of time, better was the developing move 12...,Nd7 **13.Ba2 f6 14.Bxe6+ Rxe6** At this point, there are some notation errors and I couldn't reconstruct the game, but hopefully, these few notes will impress upon the players the importance of getting all of one's pieces out, BEFORE one begins an attack, and...always look to see what your opponent's plan is, before implementing your own!!! **1-0**

## Championships Report

Date of each round:			1/6	1/20	2/3	2/17	3/3
#	Name	Rtng	Rd 1	Rd 2	Rd 3	Rd 4	Rd 5
1	Bill Wingrove	1707	W2 0.5	B4 0.5	W3 0.0	B5	W6
2	Alan Gregg	1939	B1 0.5	W6 1.0	B4 1.0	W3	W5 1.0
3	Lon Rutkofske	1905	W6 1.0	W5 0.0	B1 1.0	B2	W4
4	Noel Bedy	1628	B5 1.0	W1 0.5	W2 0.0	B6	B3
5	Dave Boucher	1322	W4 0.0	B3 1.0	B6 1.0	W1	B2 0.0

## Members' Games

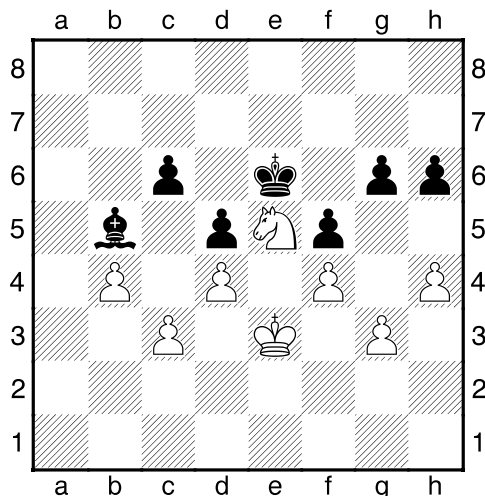
Please send me what you consider your best games, annotated or not, so that I might be able to showcase them. The following games represent contests that have been available at the time of this printing. Email them to me or give them to me personally, if you wish. Majority of analysis done by Fritz 12, unless otherwise indicated.

### (Bedy,Noel (1628) - Wingrove,Bill (1707) [C01] French Defence Exchange Variation

2011 PHCC Championships Port Huron (2), 27.01.2011

[Rutkofske,Lon]

1.d4 Nf6 2.Nc3 d5 3.e4 e6 4.exd5 exd5 5.Bd3 Be7 6.Nge2 0-0 7.0-0 a6 8.Nf4 Nc6 9.Nce2 Nb4 10.c3 Nxd3 11.Qxd3 Re8 12.Ng3 c6 13.Nfh5 g6 14.Nxf6+ Bxf6 15.Bf4 Be6 16.Rfe1 Qd7 17.Re2 Bg4 18.f3 Rxe2 19.Qxe2 Re8 20.Qd2 Bf5 21.Re1 Rxe1+ 22.Qxe1 Bh4 23.Qe3 Qe6 24.Qxe6 Bxe6 25.Bd6 Kg7 26.Kf2 f5 27.Ke3 Bf6 28.Be5 Kf7 29.Bxf6 Kxf6 30.f4 h6 31.h4 b6 32.b4 Bc8 33.Nf1 Ke6 34.Nd2 a5 35.a3 35.a4!!? 35...axb4 36.axb4 Ba6 37.Nf3 Bb7 38.Ne5 Kf6 39.Nd7+ Ke6 40.Nxb6 Ba6 41.Na4 Bb5 42.Nc5+ Kd6 43.g3 Ke7 44.Nd3 Ke6 45.Ne5 ( Diagram )



**Draw Agreed!?** At this point I think White has a win: eg 45...Kf6 46.Kd2 Ba4 47.Kc1 Bb5 48.Kb2 Ba4 49.Ka3 Bb5 50.Kb3 Ba6 51.c4 dxc4+ 52.Nxc4 Ke6 ( if 52...,Bc4 53. Kc4 should win, since after 53...Kd6 54.d5 cd 55.Kd4 permits the White K to plunder Black's King side pawns.) 53.Ne5 Kd5 54.Kc3 should seal the win, because Black cannot protect both the g-pawn or b-pawn simultaneously.



G. Avery Jones contemplates his next move vs. Dave Boucher.

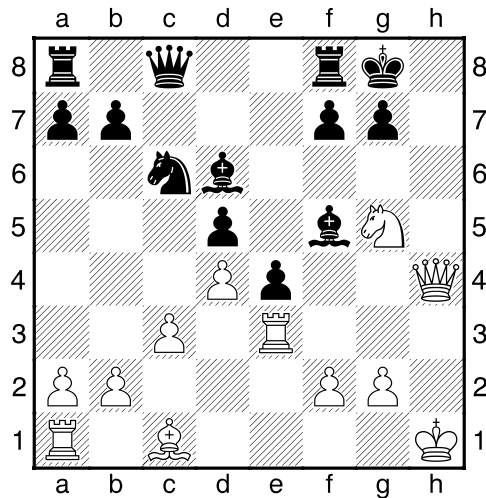


Dave Boucher pondering his position.

**Jones,G Avery (1469) - Boucher,Dave (1322) [D05] Colle System**

2011 PHCC Champs Port Huron Chess Club, 03.02.2011

**1.d4 d5 2.Nf3 e6 3.Nbd2 Nf6 4.e3 c5 5.c3 cxd4 6.exd4 Bd6 7.Bd3 Nc6 8.0-0 0-0 9.Re1 Qc7 10.Qe2 Nd7 11.Nf1 e5 12.Bxh7+ Kxh7 13.Qd3+ (The tempo saving 13.Ng5+Kg8 14.Qh5 keeps Black's KB locked in at d6!) 13...e4 14.Ng5+ Kg8 15.Qh3 Nf6 16.Qh4 Bf5 17.Ne3 Bg6 18.Ng4 Nxc4 19.Qxc4 Bxh2+ 20.Kh1 Bd6 21.Re3 Qc8 22.Qh4 Bf5 Diagram**

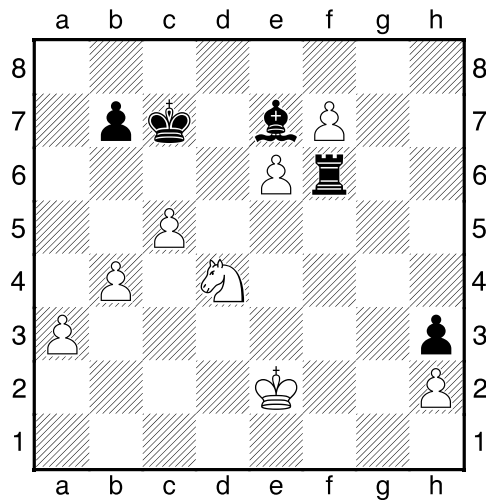


**23.g4?? (23.Rh3!!! wins instantly) 23...f6 24.gxf5 fxg5 25.Qxg5 Qxf5 26.Qg2 Bf4 27.Rh3 Bxc1 28.Rxc1 Rf6 29.Re1 Raf8 30.Re2 Rg6 31.Qh2 Qg5 32.Ree3 Rh6 33.Rxh6 Qxh6 34.Rh3 Qf6 35.Rh8+ Kf7 36.Qh5+ Ke7 37.Rxf8 Qxf8 38.Qxd5 Ke8 39.Qxe4+ Qe7 40.Qg6+ Kd8 41.Qf5 g5 42.Qd5+ Kc8 43.Qg8+ Qd8 44.Qe6+ Kb8 45.d5 Ne7 46.d6 Nc6 (White lost on time.) 0-1**

**Gregg,Alan (1939) - Rutkofske,Lon (1905) [C01] French Defense**

Casual Game/30 Port Huron Chess Club, 27.01.2011

**1.e4 e6 2.d4 Nf6 3.Bd3 Nc6 4.c3 d5 5.e5 Nd7 6.Qg4 Ne7 7.f4 c5 8.Ne2 cxd4 9.Nxd4 Nc5 10.Bc2 h5 11.Qf3 h4 12.b4 Ne4 13.Bxe4 dxe4 14.Qxe4 h3 15.g3 Qd5 16.Qxd5 Nxd5 17.a3 Bd7 18.c4 Ne7 19.Bb2 0-0-0 20.Nd2 Nc6 21.N2f3 Be8 22.0-0-0 Be7 23.Rhe1 Rh5 24.Nxc6 Bxc6 25.Rxd8+ Bxd8 26.Nd4 Bg2 27.Nb5 Be7 28.Nxa7+ Kb8 29.Nb5 g5 30.Nd6 gxf4 31.gxf4 Bh4 32.Re2 Rh7 33.Bd4 Rg7 34.f5 Rg4 35.fxe6 Rxd4 36.exf7 Be7 37.c5 Rd3 38.e6 Rf3 39.Nb5 Bf1 40.Kd2 Bxe2 41.Kxe2 Rf6 42.Nd4 Kc7 Diagram**

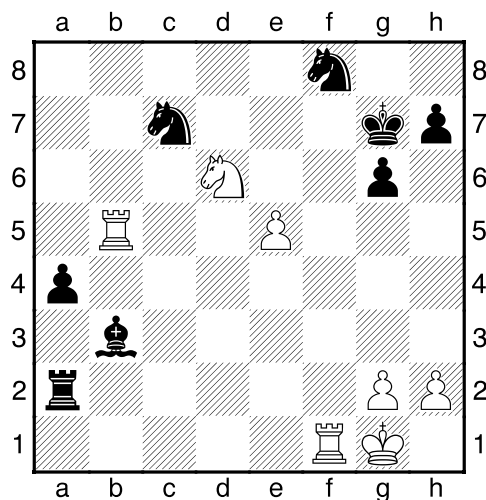


Fritz 12: 1) **43.Ke3** [Fritz 12: 2) 43.a4 Rg6 44.Kf3 Bf8 45.Ke4 Rg4+ 46.Ke5 Rg2 47.Nf3 Kd8 48.a5 Ke7 49.Kd5 Rf2 50.Nd4 Rd2 51.a6 -1.14/19 ; Fritz 12: 3) 43.Ke1 Rf4 44.Ne2 Re4 45.Kd1 Rxe6 46.Nf4 Ra6 47.Ke2 Rxa3 48.Ng6 Ra2+ 49.Kf3 Kd8 50.f8Q+ Bxf8 51.Nxf8 Ke7 52.Ng6+ Kf6 53.c6 bxc6 -2.99/19 ; Fritz 12: 4) 43.Nf3 Rxe6+ 44.Kd3 Ra6 45.Ke4 Rxa3 46.Ng5 Ra4 47.Nxh3 Rxb4+ 48.Kd5 Rb2 49.Nf4 Rf2 50.Ke6 Kd8 51.Nd5 Re2+ 52.Kf5 Rxh2 53.Nf4 -3.99/19 ; Fritz 12: 5) 43.Nc2 Rxe6+ 44.Ne3 Kd7 45.Kf3 Rf6+ 46.Kg4 Rxf7 47.Nd5 Ke6 48.Nf4+ Ke5 49.Ng6+ Ke4 50.Nxe7 Rxe7 51.Kxh3 Kf4 52.Kg2 Re2+ -4.35/19 ] **43...Bf8 44.a4 Rg6 45.Ke4 Rg4+ 46.Ke5 Rg2 47.Nf3 Kd8 48.a5 Ke7 49.b5 Rf2 50.Ke4 Re2+ 51.Kf5 Rxe6 52.Ne5 Rh6 53.Kg5** -1.11/19 **1-0**

The following position occurred during a game at the St Clair Chess Club and rose out of a Ruy Lopez , where Black permitted the exchange of his KR and f pawn for White's Bishop and Knight. It was an interesting struggle, but Tom ended up blundering a rook (Funny, because that has been my *modus operandi* of late!!!). In any event, the game appears drawn. Any ideas?

### Broyles, Tom - Rutkofske, Lon

Casual Game St. Clair Chess Club, 29.01.2011 - Diagram



**White to play.**

Can you find the best continuation? Who should win this game that arose from a Ruy Lopez?

Fritz 12 gives the following: **1.Rc5** [1.Rb7 Bd5 2.Rxc7 Rxcg2+ 3.Kh1 Rg3+ 4.Rf3 Bxf3# -#1/1 ; 1.Rxb3 axb3 2.Rxf8 (2.Nxf8 b2 3.Nd7 Ra1 4.Rb1-+ -8.79/1 ) 2...b2 3.Rf1 Ra1 4.Rb1-+ -8.79/1 ; Fritz 12: 1) 1.Rb7 Bd5 2.Rc1 Bxb7 3.Rxc7 Rxcg2+ 4.Kf1 a3 5.Rxb7 a2 6.Nc5+ Kh6 7.Nb3 Rxh2 8.Ra7 Ne6 9.Kg1 Rb2 10.Nc1 Rb1 11.Rxa2 -4.92/18 ; Fritz 12: 2) 1.e6 Nfxe6 2.Ra5 a3 3.Nb6 Nd4 4.Ra7 Ndb5 5.Rc1 Bc2 6.Rb7 Be4 7.Rbxc7+ Nxc7 8.Rxc7+ Kh6 9.Kf1 Rxcg2 10.Nc4 -4.40/17 ; Fritz 12: 3) 1.Rxb3 axb3 2.Rxf8 b2 3.Rb8 Ra1+ 4.Kf2 b1Q 5.Rxb1 Rxb1 6.Nc5 Kf7 7.Kf3 Rf1+ 8.Ke2 Rc1 9.Ne4 Ke6 10.Kd2 Rf1 -5.62/16 ; Fritz 12: 4) 1.Ra5 Nxd7 2.Ra7 Rc2 3.Rf2 Rc3 4.Rf3 Rc5 5.e6 Ne5 6.Rf1 Bxe6 7.Rxa4 Nd5 8.Ra7+ Kh6 9.Re1 Nf4 -6.04/17 ; Fritz 12: 5) 1.Rxf8 Nxb5 2.Rb8 Nc3 3.g3 Ne2+ 4.Kf2 Nc1+ 5.Kf3 Bd1+ 6.Kf4 Rf2+ 7.Ke4 Re2+ 8.Kd5 Rd2+ 9.Kc6 a3 10.Rb1 Ba4+ 11.Kb6 Bxd7 12.Rxc1 a2 13.h4 -6.22/17 ] **1...Nce6 2.Rxf8** [2.Rc7 Bd5 3.Ra7 Rxcg2+ 4.Kh1 Rg3+ -#2/1 ] **2...Nxc5 3.Rd8 Rd2 4.e6-+ -6.76/1**

I asked members to submit their games for publication, so that others might showcase their efforts, and prevent readers from having to endure a constant barrage of games that Alan or I supply to the cause. Here **Dave Boucher** obliged us with a contest between he and his nemesis, **Kraig Archer**, a teacher at SC4, who Dave admits, he “hates” to lose to. Dave writes:

*I have tried to get him (Kraig Archer) to use a clock in the past, he plays so slow, I know I lost a game at 2 am once because I was falling asleep! I didn't bring the clock this time, since I grew tired of telling him to push his stop when I did bring it.*

*I did decide to record the time and that's how I know it was 3 hours and 55 minutes from start till he made the fatal move that allowed the discovered attack on his queen. The game could not have lasted more than 5 minutes more.*

*When he sacrificed the knight to keep the bishop in the game I thought, well he's thrown away another good game. Many times in the past he has made sacrifices I considered unwise. I got to tell you though, I could not find the weakness in it over the board.*

*I did get a short chance to check it out before I gave you the game. The program I was using evaluated the sacrifice very unwise (right before it crashed, did not get to finish the analyses).*

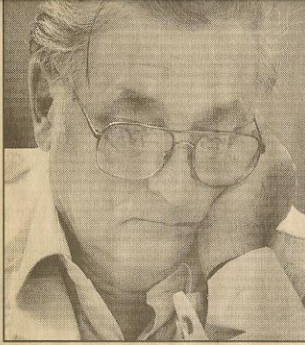
**Boucher,Dave – Archer, Kraig [C50] Hungarian Defence** Casual Game 1-29-2011  
**1.e4 e5 2.Bc4 Nc6 3.c3 Bc5 4.Nf3 Qf6 5.0-0 d6 6.h3 g5 7.d3 g4 8.Bg5 Qg7 9.hxg4 f6 10.Bh4 Bxg4 11.Bg3 0-0-0 12.b4 Nxb4 13.cxb4 Bxb4 14.a3 Bc5 15.Nbd2 h5 16.Qb3 Rh6 17.Nh4 Rf8 18.Be6+ Kb8 19.Bxg4 Qxg4 20.Ndf3 f5 21.Bh2 f4 22.Rab1 Bb6 23.a4 a5 24.Rb2 Ne7 25.Kh1 Ng6 26.Nxg6 Rxcg6 27.Rg1 h4 28.Qd1 Rh8 29.Nd2 Qe6 30.Nc4 Bd4 31.Rb3 h3 32.Qf3 b6 33.Nxa5 Qd7 34.Rbb1 Qxa4 35.Nc4 Kb7 36.gxh3 Rxcg1+ 37.Rxcg1 Qc2 38.Rg7 Kc6 39.Qg2 Qxd3 40.Qg4 Rd8 41.Qe6 Qxe4+ 42.Rg2 b5 43.Na5+ Kb6 44.Qa2 Bc3 45.Nb3 Ra8 46.f3 Qd5 47.Bg1+ Kb7 48.Na5+ Bxa5 49.Qxd5+ c6 50.Rg7+ Bc7 51.Qxd6 Rd8 52.Qxc7+ 1-0**

**Corrections from past issues of CC:**

Picture credits from the MI M/E/Class in February 2011 issue of **CC** should be from Rose Homa, rather than David Fortuna. **Website error** in February Game of the month – Alan indicated that he played Bob Ciaffone in the MI Senior only one time.

## **Blasts from the Past**

Monday, October 15, 1990 the *Port Huron Times Herald* featured the PHCC in its special Section called “Living ’90.



Chess fan Phillip Willard, Port Huron...



likes getting into a tight situation...



and then trying to get out of it.

# ALL THE RIGHT MOVES

## *Chess club provides workout for the mind*

If chess is considered "the gymnasium of the mind," then Phillip Willard was getting a thorough workout without raising a single bead of sweat.

Willard, a member of the Port Huron Chess Club, sat with his chin propped in his hand, trying to think of a move that would psych out his opponent during a recent chess club match.

Many people think chess is a stuffy game, but not all the players are nerds, said Lon Rutkofske, one of the original founders of the club in 1969. He should know. Rutkofske also coaches junior varsity football at Port Huron Northern High School.

Chess may not be a physical contact sport, but there's plenty of struggle and tremendous egotism based on your ability to outfox your opponent, Rutkofske said.

For club President Fred Goodell, chess is a 35-year-long hobby that started while he was in junior high school. It's addictive; it gets in your blood, Goodell said.

About 20 club members gather from 6:30 to 10 p.m. every Thursday at Palmer Park Recreation Center for a friendly game — and to exercise their minds.



Photographs by  
**DOROTHY NEATON**



Fred Goodell of St. Clair Township, president of the Port Huron Chess Club, considers his next move during a recent match at Palmer Park Recreation Center in Port Huron.



Bob Fiedler, left, of Port Huron, and Jim Alexander of St. Clair Township, play speed chess. Each has five minutes to play.

## PHCC Rating List

The following list represents only current members of the Port Huron Chess Club. Current USCF ratings were used for members that had them, in order to establish the initial club rating list. The USCF rating format is used as the basis for calculating our club rating list. Members that had no USCF ratings are given a provisional rating based on their performances against regular club members who had USCF ratings. Club rated events will use these ratings for pairing purposes.

### **PHCC Rating List as of 2/15/11**

<u>Name</u>	<u>Rating</u>
Gregg, Alan	1939
Rutkofske, Lon	1905
Wingrove, Bill	1707
Bedy, Noel	1628
Duncan, Bob	1595
Dean, Joel	1560
Willard, Mark	1500
Jones, G. Avery	1469
Mark Fitchett	1460
Boucher, Dave	1322

### **PHCC Speed Rating List as of 2/15/11**

<u>Name</u>	<u>Rating</u>
Rutkofske, Lon	1949
Duncan, Bob	1693
Wingrove, Bill	1625
Jones, G. Avery	1485
Mark Fitchett	1444

### **USCF Ratings as of 2/15/11**

<u>Name</u>	<u>Rating</u>
Gregg, Alan	2001
Rutkofske, Lon	1850
Wingrove, Bill	1694
Jones, G. Avery	1671
Bedy, Noel	1517
Duncan, Bob	1497
Boucher, Dave	1277

## Calendar of Events:

March 1<sup>st</sup> (Tuesday) - Tentative match with Brighton CC at All the King's Men in Warren –starts at 7:30 PM. 5 man teams -2 Games at G/30 with alternating color.

March 17<sup>th</sup> – Awards Ceremony for 2011 Club Champs – 7:00 PM

March 17<sup>th</sup> thru April 7<sup>th</sup> – Casual/Open play

March 24<sup>th</sup> , March 31<sup>st</sup> and April 7<sup>th</sup> – Chess Clinics– 6:30 to 8:00 PM - \$7.50 per person

## Dues Increase:

The Port Huron Chess Club will begin to collect dues for the coming year. While dues are not required for anyone interested in playing at the club, they are required for those competing in tournament play. Annual Dues are \$20.00 for adults and \$10.00 for those under 19. Dues funds are used to offset miscellaneous expenses not funded by the Recreation Department. **This is the first time since 1970 there has been a dues increase. Funds will be used to help fund tournament play and supplement prize funds and offset USCF expenses for rated Tournaments.**