



Chess Chatter

Newsletter of the Port Huron Chess Club

Editor: Lon Rutkofske **April 2011** **Vol.30.** **Number 4**

The **Port Huron Chess Club** meets Thursdays, except holidays, from 6:30-10:00 PM, at Palmer Park Recreation Center, 2829 Armour Street, (NE corner of Garfield Street and Gratiot Ave...1 mile North of the Blue Water Bridge) Port Huron, Michigan. Everyone is welcome. All equipment provided. Website: <http://porthuronchessclub.volasite.com/>

Gregg and Boucher Make Repeat Performances!



2011 U1600 Champion - Dave Boucher



2011 Club Champion - Alan Gregg

Alan Gregg and **Dave Boucher** made it two in a row as the dynamic duo duplicated their 2010 “over the board” success in this year’s championships. Gregg, escaped with a draw in his first round game with Bill Wingrove and parlayed his methodical “play not to lose” style into his second consecutive crown with a second draw vs Lon Rutkofske. Boucher on the other hand, played extremely well, upending Bill Wingrove and persevering in a totally lost position against former champ, Lon Rutkofske. In this second round game, when Lon blundered and was either too proud or just plain too arrogant to accept Dave’s offer of a draw by repetition of position and was duly punished with his lone loss.

Alan, presently on hiatus in the United Kingdom, extended his unbeaten streak to 9 games over the past two tournament cycles with solid, tenacious play employing a counter-punching style that has won him an expert rating and a Michigan Senior Championship in as many years.

This was the first 5 round championship tournament in quite some time, as the turnout permitted a round-robin format enabling all participants a taste of each others' lash.

This year the club experimented with larger prize funds. Alan cashed in with a \$100 bill, and Lon and Dave both secured \$50 that will probably go a long way toward making the obligatory post meeting visits to Cheap Charlie's more palatable for everyone!

The tournament was especially enhanced by the renewed patronage of Avery Jones from Sarnia, and Noel Bedy from St. Clair, two former club members that have decided to return to tournament play after lengthy absences from chess competition.

One of the important results of this year's event, and a sentiment that was shared by the majority of the players, was the desire for slower time controls. In an effort to meet the needs of our growing chess base, April will feature a G/90 mini-swiss to accommodate those requests. See you over the board in April, gentlemen!!!

Date of each round:			1/6	1/20	2/3	2/17	3/3			
#	Name	ID	Rtng:Pre/Post	Rd 1	Rd 2	Rd 3	Rd 4	Rd 5	Total	
1.	Alan Gregg		1939/1936	D4	W6	W5	D2	W3	4.0	Club Champ
2.	Lon Rutkofske		1905/1891	W6	L3	W4	D1	W5	3.5	2nd
3.	Dave Boucher		1322/1399	L5	W2	W6	W4	L1	3.0	Top U1600
4.	Bill Wingrove		1707/1683	D1	D5	L2	L3	W6	2.0	
5.	Noel Bedy		1628/1619	W3	D4	L1	D6	L2	2.0	
6.	G. Avery Jones		1469/1443	L2	L1	L3	D5	L4	0.5	

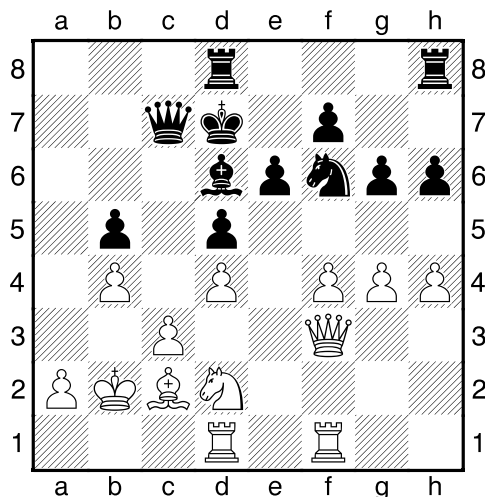
Club Rating Changes

<u>Name</u>	<u>Old</u>	<u>Perf</u>	<u>New</u>	<u>Change</u>
Noel Bedy	1628	1588	1619	-9
Dave Boucher	1322	1809	1399	+77
Alan Gregg	1939	1846	1936	-3
G. Avery Jones	1469	1380	1443	-26
Lon Rutkofske	1905	1773	1891	-14
Bill Wingrove	1707	1572	1683	-24

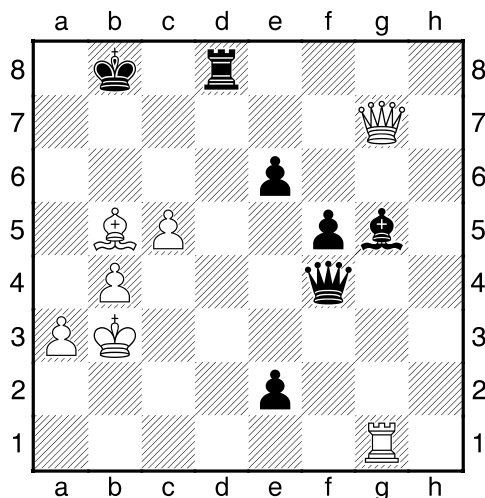
Rutkofske,Lon (1905) - Bedy,Noel (1628) [A03] Bird's Opening

2011 PHCC Championships Port Huron Chess Club (5), 03.03.2011 **1.f4 d5 2.Nf3 Bg4 3.e3 Nd7 4.d4 Bxf3 5.Qxf3 e6 6.Nd2 Ngf6 7.g4 h6 8.h4 g6 9.c3 c5 10.Bd3 cxd4 11.exd4 Qc7**

12.Nb3 Bd6 13.Bd2 0-0-0 14.0-0-0 Nb6 15.Kb1 Nc4 16.Bc1 a5 17.Rhf1 a4 18.Nd2 b5
 19.Bc2 a3 20.b4 Nb2 21.Bxb2 axb2 22.Kxb2 Kd7? Diagram



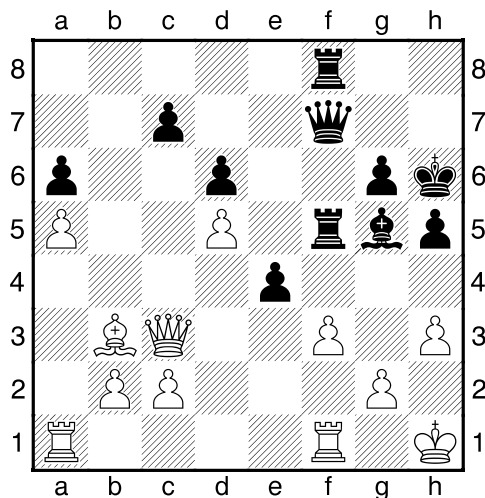
Best was 22...Kb8 or even Qb6. **23.f5 gxf5 24.Bxf5 Rhf8 25.Bd3 Be7 26.Bxb5+ Kc8 27.Qe2?!** Superior was 27.Ba6+ picking up a tempo and controlling the c8 square. **27...Kb8 28.g5 hxg5 29.hxg5 Rc8 30.Qd3 Ne4 31.Nxe4 dxe4 32.Qd2 Bxg5 33.Qc2 f5** Black has done a spectacular job of seizing the initiative. White should have played 31.Nb1, and would have lost the g pawn anyway. Now things are quite dicey. **34.c4 Rh8 35.Rh1 Qe7 36.a3 Qf6 37.Kb3** Better is Rh2, permitting a check if RxR and protecting the 2nd rank. **37...Rxh1 38.Rxh1 Qxd4** Now the game is even, but Black has all the play and his pawns will convert first! **39.Rd1 Qe5 40.c5 Rd8 41.Rg1 Rd2 42.Qc3 Qf4 43.Qh8+ Rd8 44.Qc3 e3 45.Qg7 e2** Diagram



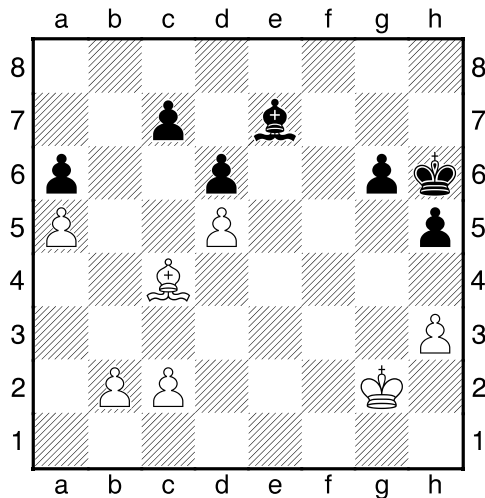
Noel pointed out 46.Ba6! which really complicates things, with both of us in time trouble. Black's best here seems to be 46...Qc3+ 47.Ka4, Bc4! with a sure win. **46.Qc3 Qe3 47.Rxg5 e1Q 48.Qxe3 Qxe3+ 49.Ka4** Before this move I had 6 seconds left and Noel had 9 seconds left, I am not sure exactly the sequence in the ending but Noel lost on time and I had 2 seconds left because he couldn't deliver mate. A great game! **1-0 Time**

Wingrove,Bill (1707) - Jones,G. Avery (1469) [C60] Ruy Lopez
 2011 PHCC Championships Port Huron Chess Club (5), 03.03.2011

1.e4 e5 2.Nf3 Nc6 3.Bb5 Nge7 4.Nc3 g6 5.d4 Bg7 6.d5 Nd4 7.Be3 Nxf3+ 8.Qxf3 0-0 9.0-0 d6 10.Rfd1 a6 11.Ba4 h5 12.h3 b5 13.Bb3 Bd7 14.a4 f5 15.Bg5 b4 16.Ne2 Qe8 17.a5 fxe4 18.Qxe4 Qf7 19.Be3 Nf5 20.f3 Nxe3 21.Qxe3 Kh7 22.Ng3 Bh6 23.Qe4 Kg7 24.Rf1 Bf4 25.Ne2 Bf5 26.Qxb4 Be3+ 27.Kh1 Qd7 28.Qh4 Kh6 29.Ng3 Bg5 30.Nxf5+ Rxf5 31.Qa4 Qf7 32.Qc6 Rf8 33.Qc3 e4 Diagram



34.Rae1 exf3 35.Rxf3 Rxf3 36.Qxf3 Qxf3 37.gxf3 Rxf3 38.Kg2 Rf7 39.Bc4 Re7 40.Rxe7 Bxe7 Diagram



41.Bxa6 Bg5 42.Bd3 Bd2 43.a6 Be3 44.b4 Ba7 45.Kf3 Kg5 46.c4 Kf6 47.Be2 Ke5 Black lost on time! 1-0

PHCC Manufactures Its Version of March Madness in a Team Match with the Brighton Chess Club!

The PHCC and Brighton created their own form of March Madness by participating in the first ever team match between the two clubs. Organized by **Matt Trojillo** and **Lon Rutkofske** while playing in the Michigan Masters/Experts/Class Tournament in January, a ferocious email barrage between Matt and Lon brought the contest to fruition as each club fielded an 8 man team. Matt's club is relatively new , but thanks

to his active recruiting in the areas of Howell, Brighton, and South Lyon, he was able to scare up some avid chess fanatics that revel in the vicissitudes of rigorous competition and “hand to piece” combat!

The Brighton squad prevailed in a closely contested 9-7 outcome, but all the players admitted that while their play was less than spectacular, it was truly an enjoyable way to spend a cold Tuesday evening.

Many thanks to **All the King’s Men** and **Ed Mandel** for providing a neutral site that split the travel needs and time constraints of both teams. A full report follows.

**Results: Team Match: Port Huron Chess Club vs Brighton Chess Club
March 1, 2011 – All the Kings’ Men – Warren Michigan**

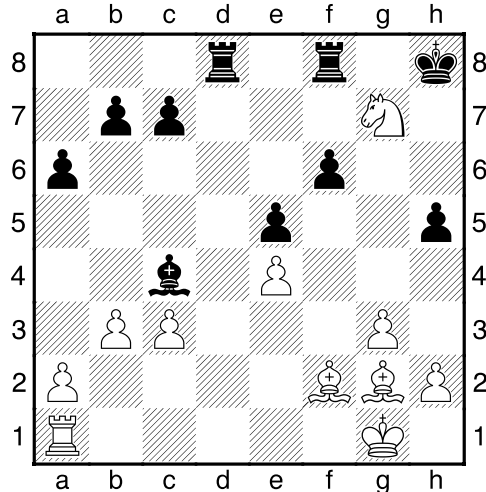
Bd	Port Huron Name/Rating	Brighton Name/Rating	Result
1	Rutkofske, Lon 1850	Eagle, Chris 2164	0-2
2	Broyles, Tom 1736	Trojillo, Matt 1814	0-2
3.	Morabito, Matt 1725	Jagt, Aaron 1671	2-0
4.	Wingrove, Bill 1694	McClure, Gene 1464	1-1
5.	Roome, Eric 1523	Sybert, Dave 1284	2-0
6.	Bedy, Noel 1517	Wright, Eric 1261	0-2
7.	Chan, Jaime 1452	Seaver, Patrick 1245	0-2
8.	Boucher, Dave 1277	Lambden, Ken 913	<u>2-0</u>
Totals			7-9

Eagle,Chris (2146) - Rutkofske,Lon (1850) [C00] French Defense G/30

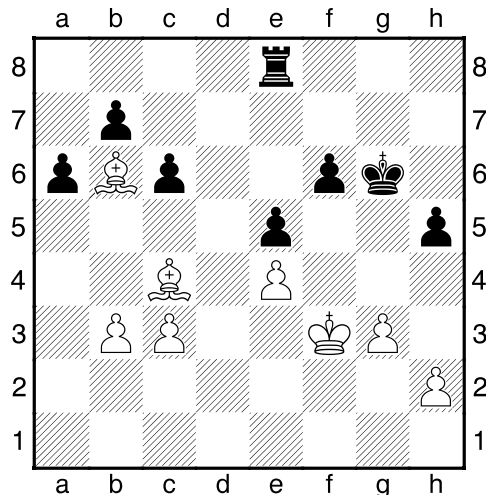
Game 1 - Team match - Bd 1 - PHCC v Brighton CC, Warren - All the Kings' Men 01.03.2011

1.e4 e6 2.d3 d5 3.Nd2 Nf6 4.Ngf3 Nc6 5.g3 dxe4 6.dxe4 e5 7.Bg2 Bc5 8.0-0 0-0 9.c3 Ng4 10.Qe2 Nxf2 I generally don't like the idea of Nxf2, giving up 2 pieces for the R+p. But in the game, White's pieces are really uncoordinated and I was afraid I'd not be able to untangle after ...f5. When Black played Qe7 instead, I think White settles into an easy game where he has the winning chances and Black is mostly trying to maintain a fortress and get a draw. CE I am inclined to agree with Chris on this exchange, and that is why I thought so long on this sequence, and it cost me dearly. In the end, I realized that to retreat was to concede that my plan was faulty, and I thought that if I could effectively blockade, I could draw. LR **11.Rxf2 Bxf2+ 12.Qxf2 f6 13.Qe2 Qe7 14.Nf1 Be6 15.Be3 a6 16.Bf2 Rad8 17.Ne3** Chris took so long in completing his centralizing maneuvers, that I had time to shore up my defenses for an eventual bout with the two white Bishops. LR **17...Qf7 18.Nh4** I expected **18...Bxa2**. I think this is objectively stronger than Nd7 but I thought the resulting active position after Nd5 Bxd5, exd5 Nd7,c4 gave Black lots of chances to go wrong given how short on time he was. I was less happy when Black played ...Nd7. CE **18...Ne7 19.Nhf5 Nxf5 20.Nxf5** I'm not sure why I played 20. Nxf5, but exf5 is both stronger and thematic. I think I was trying to keep things "safe" for me and was worried that the f-pawn would be hard to defend, but after ...Bc8, c4 c6, c5 I think the N's getting to d6 with a near winning game. CE **20...Bc4 21.Qg4 Kh8 22.b3 h5 22....h5** is interesting. At the time I thought it was great for me since had both Bs as the only minor pieces left, but they really don't have anything to aim at and I've shuffled pieces around trying to analyze this position for quite a while and I

really don't see how White and get through Black's blockade. CE **23.Qxg7+ Qxg7**
24.Nxg7 Diagram

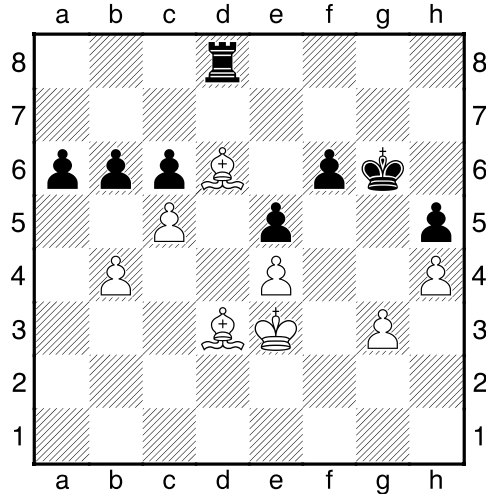


24...Bxb3 25.axb3 Kxg7 I thought I'd be okay here if 24.Nh5 because of 24...Rd1+, 25.RxR, BxR and White must lose a pawn to save his N with 26.g4 [26.Nf6 Rf6 is also a possibility] Bg4, 27.Ng3 and perhaps Id have some winning chances. LR **26.Rc1 Rd7 27.Bf3 Kg6 28.Be3 Rfd8 29.Kf2 Rd3 30.Be2 R3d7 31.Bc4 Rd1 32.Ke2 Rxc1 33.Bxc1 Re8 34.Be3 c6 35.Bb6 Kg5 36.Kf3 Kg6** Diagram



In this position I offered a draw a couple of times, because I was short on time, and knew that Chris would have a tough time penetrating with his Bishops. His next move, in my opinion is an error, because it leaves a huge hole at g4 for possible future penetration. LR **37.Be2 Rh8 38.h4** By move 38, it should have been pretty clear that I really only had 2 ways to try for a win. 1) get my B on the c8-h3 diagonal, which cuts off the king (letting my K roam free) and keeps the Black rook on defense since he can never let the B get to c8 and attack the q-side pawns and 2) make a passed h-pawn. Black wasn't going to let me get a B on the c8-h3 diagonal so I needed to make a passed pawn with g4, which i never did. I thought I could somehow get my K to Black's q-side and win pawns over there but of course that can never happen because Black's K will eat all my k-side pawns. So I don't think h4 is a bad move if I intend on following up with g4. As played, it's horrible and all Black needs to do is keep my

B from e6 and the game is drawn. CE Re8 39.c4 Re7 40.Bc5 Rd7 41.Ke3 Rd8 42.Bd3 Rb8 43.Bd6 Rd8 44.c5 b6 45.b4 bxc5 46.bxc5 Diagram

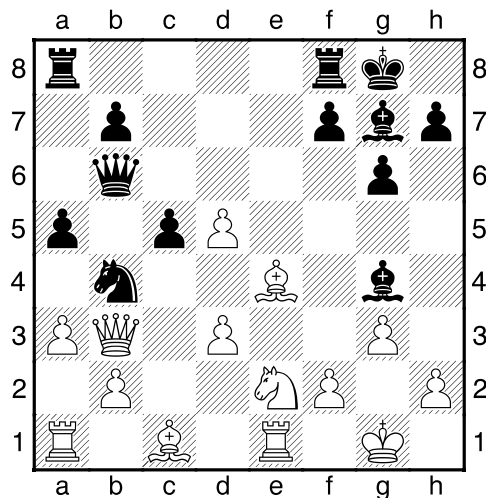


The final moves were played very rapidly, because I had less than a minute left, and Chris should have played 46.Ba6 with an easy win. LR **As for the rest of the game, I would point out that 46 Bc7 is much clearer than Bxa6 and 47 cxb6 is pretty since Rxd6 bxa5 leaves White with pawns that queen even without the help of the remaining B (not that I'm going to see this with 1 minute left on my clock). Generally we were playing '1 second chess' at this point, though, and so play was necessarily sloppy. CE 46... a5 47.Kd2 a4 48.Bc4 Ra8 49.Ba2 f5 50.Bxe5 fxe4 51.Ke3 Kf5 52.Bb1 Kxe5 Time:1-0**

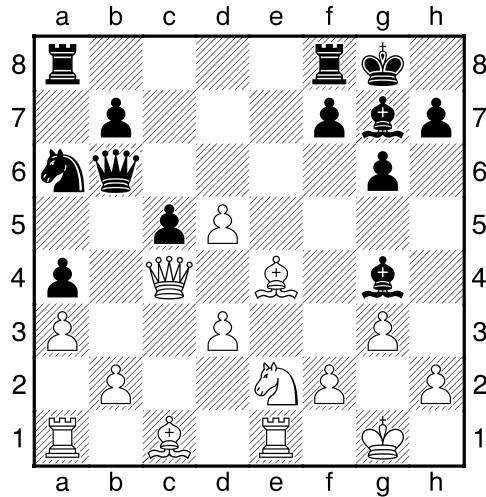
Rutkofske,Lon (1850) - Eagle,Chris (2146) [A36] Symmetrical English

Game 2 -Team match Bd 1 PHCC v Brighton CC, Warren - All the Kings' Men 01.03.2011

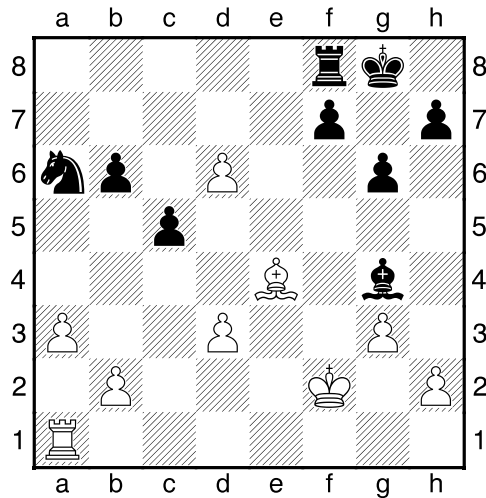
1.e4 c5 2.c4 Nc6 3.g3 g6 4.Bg2 Bg7 5.Ne2 e6 6.Nbc3 Nge7 7.0-0 0-0 8.d3 d5 9.cxd5 exd5 10.Nxd5 Nxd5 11.exd5 Nb4 12.Qb3 Bf5 13.Rd1 Qb6 14.Be4 Bg4 15.Re1 a5 16.a3 Diagram



16...a4 17.Qc4 Na6 Diagram



18.Nc3 Much better plan would be 18.Qc2 Followed by 19.Be3 or Ne3 and then Rab1...and since Chris was short on time, I would have lots of opportunity to complicate play with my positional and material advantage, since his pieces are not well placed. **18...Qa5 19.Qxa4?? Bxc3 20.Qxa5 Bxa5 21.Bh6 Bxe1 22.Bxf8 Bxf2+ 23.Kxf2 Rxf8 24.d6 b6** Diagram

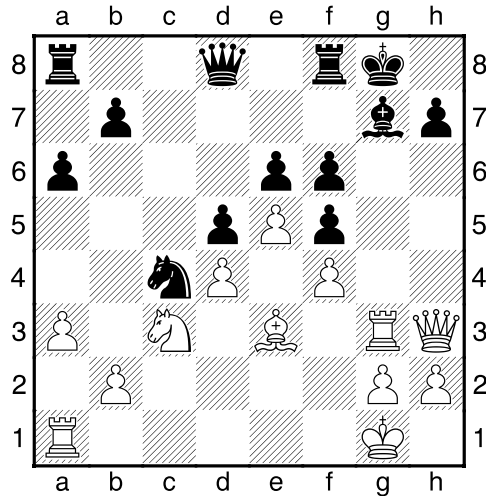


25.a4 Rd8 26.a5 Rd6 27.ab Rb6 28.Ke3 Nc7 29. Ra7 Ne6 30.Ra2 Rb4 31. Bd5 Kg7 32.Bc4 Nd4 33.Ra5 Rb2 34. Rc5 Ne6 36.Be6 Be6 37.h4 Rg2 38.Kc3, Rg1 39.Rc3 h5 and the game continued for another 15 moves as I unsuccessfully tried to run Chris out of time, but he played well, and I panicked after dropping the piece on move 19. **0-1**

Broyles, Tom (1737) - Trojillo, Matt (1814) [B06] Modern Defense

Team match Bd 2 PHCC v Brighton CC Warren - All the Kings' Men, 01.03.2011

1.e4 c5 2.c3 g6 3.d4 cxd4 4.cxd4 d5 5.e5 Bg7 6.f4 Nh6 7.Nf3 Bg4 8.Be3 0-0 9.Nc3 Bxf3 10.Qxf3 e6 11.Bd3 a6 12.0-0 Nc6 13.a3 f6 14.Qh3 Nf5 15.Bxf5 gxf5 16.Rf3 Na5 17.Rg3 Nc4 Diagram

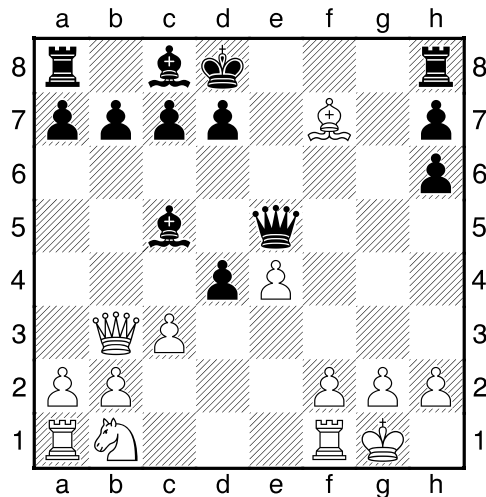


18.Bf2 fxe5 19.Qh6 Qf6 20.Qxf6 Rxf6 21.dxe5 Rg6 22.Rh3 b5 23.b3 Nd2 24.b4 Rc8
 25.Rd1 Nc4 26.Bc5 Rg4 27.Rf3 Bf8 28.Be3 Nxe3 29.Rxe3 Rxf4 30.Rg3+ Rg4 31.Rxg4+
 fxc4 32.Rd3 Bg7 33.Rg3 Rc4 0-1

Trojillo,Matt (1814) - Broyles,Tom (1737) [C44] Scotch Game

Team match Bd 2 PHCC v Brighton CC, Warren - All the Kings' Men 01.03.2011

1.e4 e5 2.Nf3 Nc6 3.d4 exd4 4.Bc4 Qe7 5.0-0 Ne5 6.Nxe5 Qxe5 7.c3 Bc5 8.Qb3 Nh6
 9.Bxh6 gxh6 10.Bxf7+ Kd8 Diagram

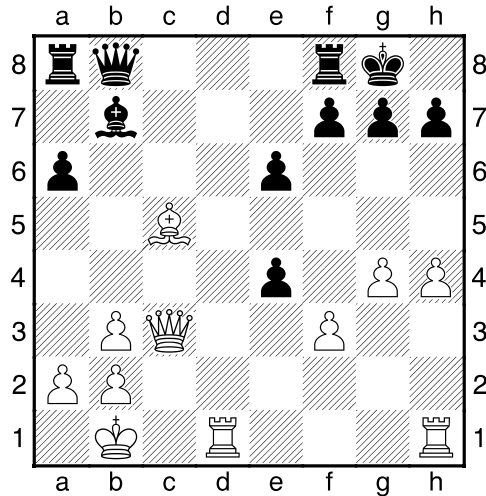


11.Nd2 Rf8 12.Nf3 Qg7 13.cxd4 Bxd4 14.Nxd4 Rxf7 15.Nf5 Qg6 16.Qc3 c6 17.Qh8+ Kc7
 18.Rad1 d5 19.Qe5+ Kb6 20.Ng3 Be6 21.Rd4 Re8 22.Rb4+ Ka6 23.Qc3 b6 24.Qxc6 Rc8
 25.Ra4# 1-0

Jagt,Aaron (1671) - Morabito,Matt (1725) [B80] Sicilian Scheveningen

Team match Bd 3 PHCC v Brighton CC, Warren - All the Kings' Men 01.03.2011

1.e4 c5 2.Nf3 d6 3.d4 cxd4 4.Nxd4 Nf6 5.Nc3 Nc6 6.Be3 e6 7.Qd2 Be7 8.f3 0-0 9.Bc4 a6
 10.0-0-0 Nxd4 11.Bxd4 b5 12.Bb3 Bb7 13.g4 Nd7 14.Kb1 Nc5 15.h4 Nxb3 16.cxb3 b4
 17.Na4 d5 18.Nc5 Qb8 19.Qxb4 dxe4 20.Qc3 Bxc5 21.Bxc5 Diagram



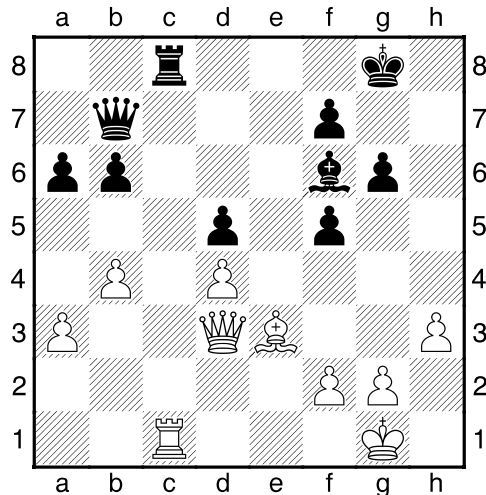
21...Qc8 22.Bxf8 Kxf8 23.Qb4+ Kg8 24.fxe4 Qc6 25.Rhe1 h6 26.Qe7 Rc8 27.g5 hxg5 28.Qxg5 f6 29.Qg6 Qe8 30.Qxe8+ Rxe8 31.Rd7 Bc6 32.Rd6 Bb7 33.a4 White eventually Queened on b8, but overstepped the time control. 0-1

No Game score was entered for game one, which was won by Matt Morabito. 1-0

McClure, Gene (1464) - Wingrove, Bill (1694) [B22] Sicilian Defense

Team Match Bd 4 - PHCC v Brighton CC, Warren - All the Kings' Men 01.03.2011

1.e4 c5 2.c3 d5 3.exd5 Qxd5 4.d4 Nc6 5.Nf3 Bg4 6.Be2 Nf6 7.0-0 e6 8.h3 Bh5 9.Be3 cxd4 10.cxd4 Be7 11.Nc3 Qd8 12.Rc1 0-0 13.a3 a6 14.b4 Bg6 15.Nh4 Nd5 16.Nxg6 hxg6 17.Nxd5 exd5 18.Bf3 Bf6 19.Rc5 Ne7 20.Qb3 b6 21.Rc2 Qd7 22.Bg4 Qb7 23.Rd1 Nf5 24.Bxf5 gxf5 25.Qd3 g6 26.Rdc1 Rac8 27.Rxc8 Rxc8 Diagram

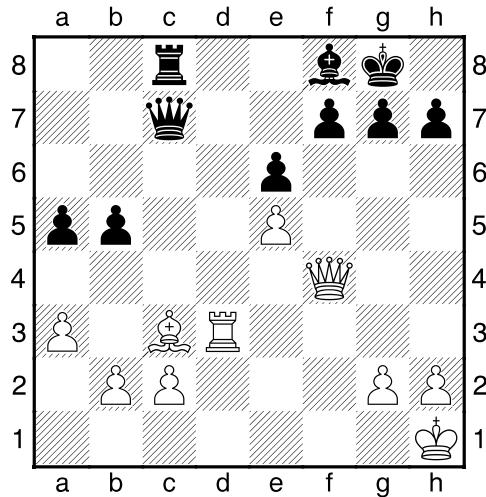


28.Re1 Rc4 29.Rd1 Qc8 30.Qb3 Qc6 31.g3 Rc3 32.Qb2 Qc4 33.h4 Qb3 34.Qxb3 Rxb3 35.Ra1 Rd3 36.a4 Bxd4 37.Bxd4 Rxd4 38.b5 a5 39.Kg2 Kf8 40.Kf3 Ke7 41.Ke3 Rb4 42.Kd3 Kd6 43.Kc3 Re4 44.Kd3 Rc4 45.Ke3 Kc5 46.Kd3 Kb4 47.Ke3 Kb3 48.Kd3 Kb2 49.Re1 Re4 50.Rd1 Rxa4 51.Rd2+ Kb3 52.Rc2 Kb4 53.Rb2+ Kc5 54.Ke3 0-1

Wingrove,Bill (1694) - McClure,Gene (1464) [B83] Sicilian Scheveningen

Team match Bd 4 - PHCC v Brighton CC, Warren - All the Kings' Men 01.03.2011

1.e4 c5 2.Nf3 Nc6 3.d4 cxd4 4.Nxd4 Nf6 5.Nc3 d6 6.Be2 e6 7.Be3 Be7 8.0-0 a6 9.Kh1 0-0
10.Qd2 Qc7 11.f4 b5 12.Bf3 Bb7 13.a3 Nxd4 14.Bxd4 Bc6 15.Rad1 Rfd8 16.Qf2 Qb7
17.Qe3 a5 18.e5 dxe5 19.fxe5 Nd5 20.Nxd5 Bxd5 21.Bxd5 Rxd5 22.Qf3 Bf8 23.Rd3 Qd7
24.Rfd1 Rc8 25.Bc3 Rxd3 26.Rxd3 Qc7 27.Qf4 Diagram

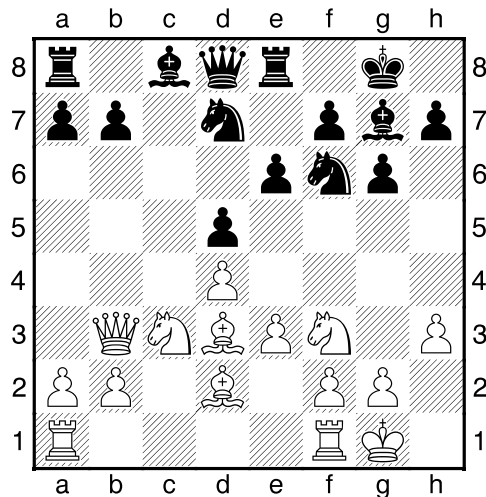


27...b4 28.axb4 axb4 29.Bxb4 Bxb4 30.Qxb4 Qxc2 31.Qd4 Qxd3 32.Qg1 Qd2 0-1

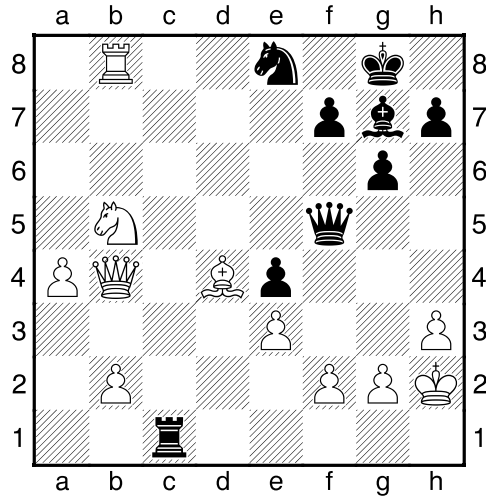
Roome,Eric (1523) - Sybert,Dave (1284) [D94] Grunfeld

Team match Bd 5 - PHCC v Brighton CC Warren - All the Kings' Men, 01.03.2011

1.d4 d5 2.c4 Nf6 3.Nf3 c6 4.e3 g6 5.Nc3 Bg7 6.Bd3 0-0 7.h3 Nbd7 8.0-0 Re8 9.cxd5 cxd5
10.Qb3 e6 11.Bd2 Diagram



11...b6 12.Rfc1 a5 13.Nb5 Re7 14.a4 Ne8 15.Rc2 Ba6 16.Rac1 Ndf6 17.Ne5 Bb7 18.Nc6
Bxc6 19.Rxc6 e5 20.dxe5 Rxe5 21.Bc3 Re6 22.Bd4 Rxc6 23.Rxc6 Rb8 24.Qc3 Qd7
25.Rxb6 Rc8 26.Qxa5 Rc1+ 27.Kh2 Ne4 28.Bxe4 dxe4 29.Qb4 Qf5 30.Rb8?? Diagram

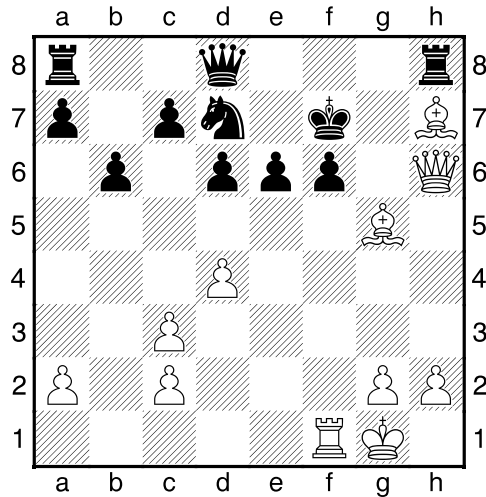


30...Rc8?? 30...Be5+ wins! 31.Rxc8 Qxc8 32.Bxg7 Kxg7 33.Qxe4 Nf6 34.Qd4 Qc2 35.f3 h5 36.Nd6 Qb3 37.Ne8+ Kf8 38.Nxf6 Qb8+ 39.f4 Qc7 40.Qc5+ Qxc5 41.Nd7+ Ke7 42.Nxc5 Kd6 43.b4 f6 44.h4 Kc6 45.a5 1-0

Bedy,Noel (1517) - Wright,Eric (1261) [A82] Dutch Defense-Staunton Gambit

Team match Bd 6 - PHCC v Brighton CC, Warren - All the Kings' Men 01.03.2011

1.d4 f5 2.Nc3 Nf6 3.e4 fxe4 4.f3 exf3 5.Nxf3 e6 6.Bd3 Bb4 7.0-0 0-0 8.Bg5 Bxc3 9.bxc3 b6 10.Qe1 Bb7 11.Qh4 Bxf3 12.Rxf3 d6 13.Raf1 Nbd7 14.Bxh7+ Kf7 15.Rxf6+ gxf6 16.Qh6 Rh8 Diagram

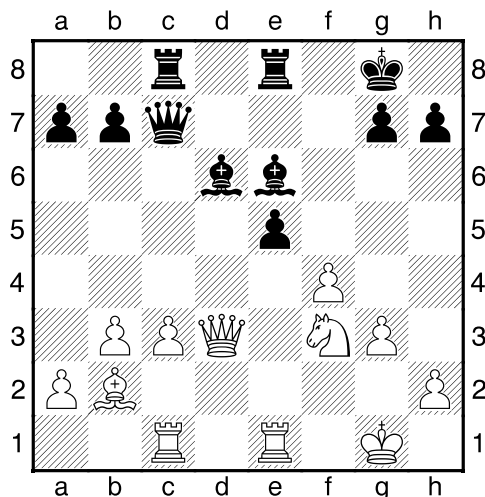


17.Bg6+?? A huge blunder.....17.Qg6+ forces wins by force. 17... Ke7 18. Qg7+ Ke8 [If 18...Kf8 then 19. Bh6+ Ke7 20.Qg7 mate]19.Bg6 mate! **17...Kg8 18. Bf7+ Kxf7 0-1**

Wright,Eric (1261) - Bedy,Noel (1517) [D05] Colle System

Team match Bd 6 - PHCC v Brighton CC, Warren - All the Kings' Men 01.03.2011

1.d4 d5 2.Nf3 e6 3.e3 c5 4.b3 Nf6 5.Bb2 Nbd7 6.Nbd2 Be7 7.Bd3 Qc7 8.Bb5 cxd4 9.exd4 0-0 10.Bxd7 Bxd7 11.0-0 Rac8 12.Rc1 Rfe8 13.Ne5 Bb5 14.Re1 Bb4 15.c3 Bd6 16.f4 Nd7 17.Ndf3 f6 18.Nxd7 Bxd7 19.g3 e5 20.dxe5 fxe5 21.Qxd5+ Be6 22.Qd3 Diagram

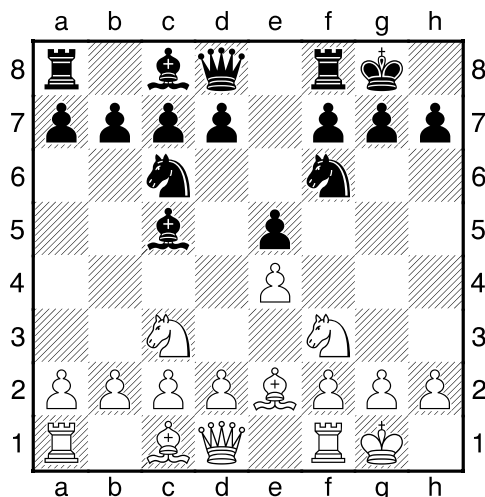


22...exf4 A better idea was Rcd8 with a huge threat of Bc5! **23.Ng5??** The Text move looks promising with mating threats on h7, but the simple 23...Qc5+ 24.Qd4 Bd5 looks powerful and if instead 24.Re3? Bf5 looks very nasty and stops the mate threats dead in their tracks! **23...Bc5+ 24.Kf1 Bh3+??** This blunder pretty much ends it all! **25.Nxh3 fxf3 26.Qxg3** Fritz 12: 1) **26...Rf8+** [Fritz 12: 2) 26...Qf7+ 27.Nf2 Rf8 28.Rc2 Rc6 29.Ree2 Qh5 30.Rcd2 Rg6 31.Re5 Qh6 32.Qd3 Bxf2 33.Qd5+ Kh8 34.Rxf2 Rxf2+ 35.Kxf2 Qxh2+ -1.14/16 ; Fritz 12: 3) 26...Rxe1+ 27.Rxe1 Rf8+ 28.Ke2 Re8+ 29.Kf1 0.00/6 ; Fritz 12: 4) 26...Qc6 27.Nf2 Rf8 28.Rc2 Rf6 29.Qg2 Qd6 30.Qg3 Qc6 0.00/12 ; Fritz 12: 5) 26...Qd7 27.Rcd1 Rxe1+ 28.Rxe1 Rf8+ 29.Nf4 Qf5 30.Bc1 Bd6 31.Kg2 Bxf4 32.Bxf4 Qxf4 33.Qxf4 Rxf4 34.Kg3 Rf7 35.c4 Rd7 36.c5 Kf7 0.34/14] **27.Ke2 Rce8+ 28.Kd2 Qd7+ 29.Qd3 Qf5 30.Qxf5 1-0**

Sybert,Dave (1284) - Roome,Eric (1523) [C55] Two Knights/Max Lang Attack

Team match Bd 5 - PHCC v Brighton CC, Warren - All the Kings' Men, 01.03.2011

1.e4 e5 2.Nf3 Nc6 3.Nc3 Nf6 4.Bc4 Bc5 5.0-0 0-0 6.Be2 Diagram



6...d6 7.d3 a6 8.Nd5 Nxd5 9.exd5 Ne7 10.c3 Nxd5 11.Bg5 Qe8 12.Re1 h6 13.Bd2 Be6 14.Qc1 Qd8 15.Bxh6 gxh6 16.Qxh6 Qf6 17.Qh5 Nf4 18.Qg5+ Qxg5 19.Nxg5 Bf5 20.Rad1 Nxe2+ 21.Rxe2 Bg4 22.Nf3 Bxf3 23.gxf3 f5 24.Kh1 Kf7 25.Rde1 Rae8 26.Rg1 Rg8 27.Rg3 Kf6 28.h4 Rh8 29.Rh3 Reg8 30.Rd2 Rh5 31.b4 Bb6 32.Rc2 Rgh8 33.d4 Rxh4 34.Rxh4

Rxh4+ 35.Kg2 exd4 36.cxd4 Rxd4 37.a3 a5 38.b5 Ra4 39.Rc3 Bc5 40.Rc1 Rxa3 41.Rh1 Ra2 42.f4 Rxf2+ 43.Kg3 Kg7 44.Rh5 Kg6 45.Rg5+ Kf6 46.Rh5 Rb2 47.Rh6+ Ke7 48.Kh4 Rh2+ 49.Kg5 Rxh6 50.Kxh6 Kf6 0-1

Chan,Jaime (1452) - Seaver,Partick (1245) [A21] English Opening

Team match Bd 7 - PHCC v Brighton CC, Warren - All the Kings' Men 01.03.2011

1.c4 e5 2.Nc3 Nf6 3.g3 Bb4 4.Bg2 Bxc3 5.bxc3 c6 6.Ba3 d6 7.Nf3 Bg4 8.0-0 Bxf3 9.Bxf3 0-0 10.Rb1 Re8 11.Rxb7 Qc8 12.Qb3 c5 13.Rb1 Nc6 14.Qb5 e4 15.Bg2 a6 16.Qb6 Nd7 17.Bh3 Nxb6 18.Bxc8 Nxc8 19.Rc7 N8e7 20.Rbb7 Kf8 21.d3 exd3 22.exd3 Ne5 23.d4 Nxc4 24.Bc1 Na5 25.Rb6 Nd5 26.Rxf7+ Kxf7 27.Rxd6 Nxc3 28.dxc5 Ne2+ 29.Kf1 Nxc1 30.c6 Rac8 31.Rd7+ Re7 32.h4 Rxd7 33.cxd7 Rd8 34.a4 Rxd7 35.Kg2 Rd4 0-1

Seaver,Patrick (1245) - Chan,Jaime (1452) [B07] Pirc Defense

Team match Bd 7 - PHCC v Brighton CC, Warren - All the Kings' Men 01.03.2011

1.e4 d6 2.Nf3 Nf6 3.Nc3 g6 4.Bc4 Bg7 5.d3 0-0 6.h3 c6 7.a3 b5 8.Ba2 Na6 9.Be3 Nc7 10.Qd2 Re8 11.0-0-0 Be6 12.h4 Bxa2 13.Nxa2 Ng4 14.h5 Nxe3 15.Qxe3 h6 16.hxg6 fxg6 17.Rxh6 Ne6 18.Rxg6 Kf7 19.Nh4 Rh8 20.Rxe6 Kxe6 21.Qh3+ Kf7 22.Qf5+ Bf6 23.Nf3 Qg8 24.g3 e6 25.Qf4 Ke7 26.Qe3 Qg7 27.c3 a5 28.Kc2 Rab8 29.Qa7+ 1-0

Boucher,Dave (1277) - Lambden,Ken (913) [B07] Pirc Defense

Team match Bd 8 - PHCC v Brighton CC Warren - All the Kings' Men, 01.03.2011

1.e4 d6 2.d4 Nf6 3.Nc3 g6 4.Be3 Bg7 5.Qd2 Ng4 6.Bg5 Nc6 7.Nf3 f6 8.Bh4 g5 9.Bg3 Bd7 10.h3 Nh6 11.Bb5 a6 12.Bc4 e6 13.0-0-0 b5 14.Bf1 b4 15.Ne2 a5 16.d5 Ne5 17.dxe6 Bxe6 18.Ned4 Nxf3 19.gxf3 Bd7 20.Bb5 Bxb5 21.Nxb5 0-0 22.Qd5+ Rf7 23.f4 g4 24.hxg4 Nxg4 25.Rh4 Nh6 26.Rdh1 Qf8 27.Nxc7 Rc8 28.Ne6 Qe8 29.Nxg7 Rc5 30.Qd4 Rxg7 31.Rxh6 Qe6 32.Kb1 Rc4 33.Qd5 Qxd5 34.exd5 Rd4 35.Rxf6 Rxd5 36.Re1 Kh8 37.Re8+ Rg8 38.Rxg8+ Kxg8 39.b3 Kg7 40.Re6 Rd1+ 41.Kb2 d5 42.Ra6 d4 1-0

Lambden,Ken (913) - Boucher,Dave (1277) [B00] Queen's Fianchetto Defense

Team match Bd 8 - PHCC v Brighton CC Warren - All the Kings' Men, 01.03.2011

1.e4 e6 2.Nf3 b6 3.Nc3 Bb7 4.d4 d5 5.e5 c5 6.Ne2 Ba6 7.c3 Qd7 8.g3 cxd4 9.cxd4 Ne7 10.Bg2 Nbc6 11.a3 Nf5 12.0-0 Bxe2 13.Qxe2 Nfxd4 14.Qd2 Nxf3+ 15.Bxf3 Nxe5 16.Bg2 Be7 17.Kh1 0-0 18.f4 Nc4 19.Qc2 Rac8 20.Rb1 Ne3 21.Qe2 Nxf1 22.Qxf1 Rc2 23.b4 Rfc8 24.Be3 Ra2 25.Qd3 Qa4 26.h4 Qxa3 27.Qxa3 Rxa3 28.Rc1 Rxc1+ 29.Bxc1 Ra1 0-1



Ken Lambden vs Dave Boucher



Eric Roome vs Dave Sybert



Eric Wright vs Noel Bedy



Aaron Jagt vs Matt Morabito



Tom Broyles vs Matt Trojillo



Bill Wingrove vs Gene McClure



Chris Eagle



Patrick Seaver vs Jaime Chan

Members' Games

Please send me what you consider your best games, annotated or not, so that I might be able to showcase them. The following games represent contests that have been available at the time of this printing. Email them to me or give them to me personally, if you wish. Majority of analysis done by Fritz 12, unless otherwise indicated.

Wiley,Cullen - Wiley,Mom [A00] Irregular K-Pawn Opening

February 2011 Practice game – Recording a game practice

1.e3 b5 2.Be2 A mistake on White's part since Black is giving a way a free pawn. 2. Bb5 is required! **2...Nc6 3.Bh5** I applaud that you have developed a plan against the weak square at Black's f7...but it is easily foiled by Nf6 which should require a retreat. Better is 3. Bb5, followed by Bc4 attacking the f7 square, but more subtly! **3...h6** This move really is meaningless, and provides Black no relief for protection of the f7 square. **4.Qf3** Even 4....,g6 provides some protection from the mate threat. Sometimes, being so obvious is detrimental to an attack. Perhaps a moves like 4.c3 and Qb3 would be better, but much slower. **4...e5??** This loses immediately to Qf7 mate!!! **5.Bxf7+??** Obviously 5.Qf7 mate is superior!!! The text move shows fear and lack of confidence in one's analysis and plan! If you plan to go for the kill, then commit fully! **5...Ke7 6.Bh5** A loss of tempo here. 6.Bg6 is superior because it still threatens mate and does not permit the KN to pose threats to the KB. Also, permits the next logical move of 8.Nc3 with more threats to the vulnerable K. **6...Nf6 7.Bg6 d5** A very sound and developing move cutting off the hidden threat of to Black's QR if the Black QN moves. It also gives a chance to mount a counter attack against the White Queen with Bg4 and then Nb4 threatening the fork at c2!!! **8.Qd1??** This "undeveloping" move makes little sense. If White fears 8...Bg4..the simple h3 would suffice...but I can see that White now has issues with Black's Nb4. **8...Be6 9.Bd3** For some reason, White has totally relinquished his attacking prospects and has gone into a defensive shell. The text move falls victim to a6, then to the eventual e4 pushing the White QB back to e2 and taking much more of the central space. At this point, Black is winning! **9...h5** This move makes absolutely no sense in terms of development. Better would be 9...a6 protecting the b pawn. **10.Bxb5** See, after all this time, White finally captures the b pawn, that he had for free on move 2!!!! **10...Rb8??** A terrible blunder which loses the QN. Simply BxN wins a piece. **11.Bd3??** Huh??? Wow...Mom's must bet a special pass...but even the retreat to d3 is a poor choice because it restricts central expansion of the White d pawn. If retreat was in the cards...Be2 was best!! **11...Qd7 12.f3 g5 13.b3 Bf7 14.c3 Bh6 15.Be2 Bg6 16.Ba3+ Kd8 17.d3 e4 18.dxe4 dxe4 19.fxe4 Re8 20.c4 Re5 21.c5** At this point the game score is impossible to follow, but at least the players have attempted to keep score and I hope from this point forward will have enough practice to keep more accurate score sheets. Bravo to Mom and Cullen for a solid job in attempting to record effectively.

PHCC Rating List

The following list represents only current members of the Port Huron Chess Club. Current USCF ratings were used for members that had them, in order to establish the initial club rating list. The USCF rating format is used as the basis for calculating our club rating list. Members that had no USCF ratings are given a provisional rating based on their performances against regular club members who had USCF ratings. Club rated events will use these ratings for pairing purposes.

PHCC Rating List as of 3/8/11

Name	Rating
Gregg, Alan	1936
Rutkofske, Lon	1891
Wingrove, Bill	1683
Bedy, Noel	1619
Duncan, Bob	1595
Dean, Joel	1560
Willard, Mark	1500
Mark Fitchett	1460
Jones, G. Avery	1443
Boucher, Dave	1399

PHCC Speed Rating List as of 3/8/11

Name	Rating
Rutkofske, Lon	1949
Duncan, Bob	1693
Wingrove, Bill	1625
Jones, G. Avery	1485
Mark Fitchett	1444

USCF Ratings as of 3/8/11

Name	Rating
Gregg, Alan	2001
Rutkofske, Lon	1850
Wingrove, Bill	1694
Jones, G. Avery	1671
Bedy, Noel	1517
Duncan, Bob	1497
Boucher, Dave	1277

Calendar of Events:

March 17th thru April 7th – Casual/Open play

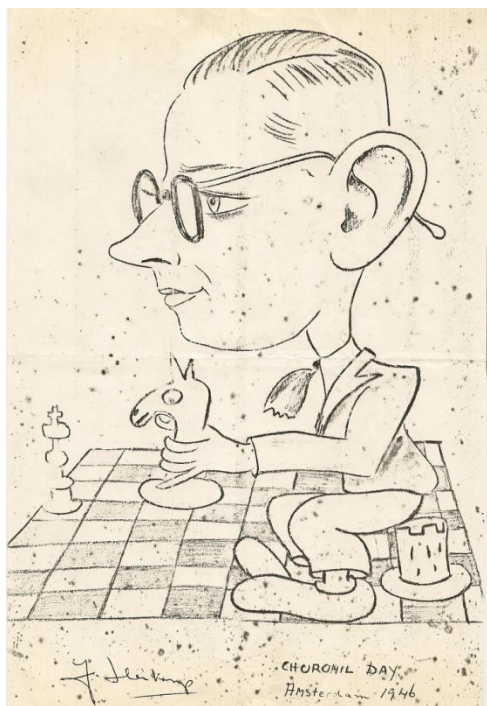
March 24th , March 31st and April 7th – Chess Clinics– 6:30 to 8:00 PM - \$7.50 per person

April 14, 21, 28 – April Mini-Swiss: G/90 one round each Thursday. EF: \$5.00/\$2.50 A/J – prize

fund dependent on entries

Blast from the Past

Jack Heikamp was an icon around the PHCC in the 70's and 80's. He owned a fabric store in Sarnia, Ontario and lived to play chess. As a Dutch immigrant he regaled PHCC club members with stories of playing Alexander Alekhine, Max Euwe and his youth in Holland. He became affectionately known as “Gentleman Jack” because of his demeanor and chivalrous attitude about the game he loved so much. He added much to the quality and lore of the club. He is dearly missed.



At left is a caricature of Jack from 1946. Above is a 1974 photo of the cigarette puffing Dutchman!

Dues Increase:

The Port Huron Chess Club will begin to collect dues for the coming year. While dues are not required for anyone interested in playing at the club, they are required for those competing in tournament play. Annual Dues are \$20.00 for adults and \$10.00 for those under 19. Dues funds are used to offset miscellaneous expenses not funded by the Recreation Department. **This is the first time since 1970 there has been a dues increase. Funds will be used to help fund tournament play and supplement prize funds and offset USCF expenses for rated Tournaments.**