



Chess Chatter

Newsletter of the Port Huron Chess Club

Editor: Lon Rutkofske September 2011 Vol.30. Number 9

The **Port Huron Chess Club** meets Thursdays, except holidays, from 6:30-10:00 PM, at Palmer Park Recreation Center, 2829 Armour Street, (NE corner of Garfield Street and Gratiot Ave...1 mile North of the Blue Water Bridge) Port Huron, Michigan. Everyone is welcome. All equipment provided. Website: <http://porthuronchessclub.yolasite.com>

PHCCers Hit the Road for Cadillac

Alan Gregg, Lon Rutkofske, Eric Roome, Noel Bedy and **Matt Morabito** round out the PHCC Team that will be heading to Cadillac this Labor Day weekend to participate in the Michigan Open Chess Championships. In addition to the chess, Lon has agreed to run for the office of Michigan Chess Association president for his inaugural attempt at securing a state level position. Hopefully you may take some time to peruse Lon's credentials in the final pages of this Month's CC.

We are hoping that all of the team plays at the top of their game, and perhaps the PHCC may even garner some statewide recognition as well. Good Luck to Team PHCC!

Gifts get Gregg gobs of gratuities

Whoever claimed it was better to give than to receive obviously wasn't much of a chess player as Club Champion Alan Gregg merrily gobbled up free pieces from both Lon Rutkofske and Matt Morabito to notch his third consecutive PHCC tournament win.

Eric Roome was turned out to be the big winner of the tournament with an upset win over Lon and some solid play in his other games he managed a 53 point bump in his USCF rating.

This tournament was a real coup for the club, since it was the first USCF rated event hosted by the club since 1998. We hope that there may be more in the near future if we can develop sustained interest in USCF rated play. It is clear that raising club dues offsets the rating expenses and helps keep entry fees at reasonable levels.

We hope to see more USCF rated events in the near future and will at the very least, have some concrete data that will help us evaluate our efforts at the end of the year.

PHCC August USCF Mini Swiss

#	Name	Rtng	Post	Rd 1	Rd 2	Rd 3	Tot	Prize
1	Alan Gregg	2017	2025	W5	W4	W2	3.0	\$40.00
2	Matthew Morabito	1748	1755	W3	W5	L1	2.0	
3	Eric Roome	1523	1576	L2	W6	W4	2.0	U1600/\$20.00
4	Lonnie Rutkofske	1833	1811	W6	L1	L3	1.0	
5	G Avery Jones	1519	1505	L1	L2	D6	0.5	
6	Noel Bedy	1423	1412	L4	L3	D5	0.5	

Members' Games

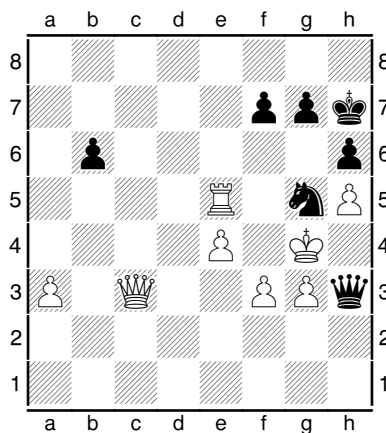
Please send me what you consider your best games, annotated or not, so that I might be able to showcase them. The following games represent contests that have been available at the time of this printing. Email them to me or give them to me personally, if you wish. Majority of analysis done by Fritz 12, unless otherwise indicated.

Games from the 2011 PHCC August USCF Rated Mini-Swiss

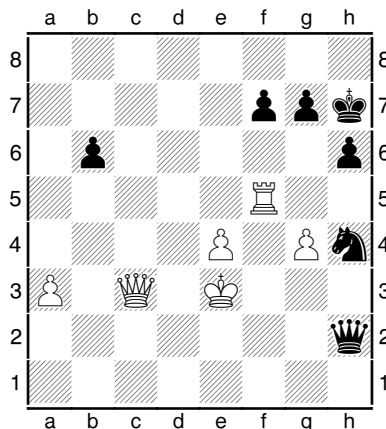
Morabito, Matt (1748) - Roome, Eric (1523) [A30] Symmetrical English

PHCC August USCF Mini Swiss G90, Port Huron Chess Club (1), 11.08.2011

1.Nf3 d5 2.g3 b6 3.Bg2 Bb7 4.0-0 Nf6 5.c4 e6 6.d4 Be7 7.Nc3 0-0 8.cxd5 Nxd5 9.Re1 Nxc3 10.bxc3 c5 11.e4 cxd4 12.cxd4 Bb4 13.Bd2 Qe7 14.Bxb4 Qxb4 15.a3 Qd6 16.Ng5 Qe7 17.Qh5 h6 18.Nh3 Nd7 19.d5 Nc5 20.Nf4 e5 21.d6 Qxd6 22.Rad1 Qe7 23.Nd5 Qg5 24.Qe2 Ba6 25.Qc2 Rad8 26.h4 Qg4 27.Kh2 Kh8 28.Re3 Bc8 29.f3 Qd7 30.Qc3 Rfe8 31.Re2 Qa4 32.Red2 Be6 33.Nxb6 axb6 34.Rxd8 Rxd8 35.Rxd8+ Kh7 36.Bh3 Bxh3 37.Kxh3 Qb5 38.h5 Ne6 39.Rd5 Qf1+ 40.Kg4 Ng5 41.Rxe5 Qh3+ Diagram



42.Kf4 Fritz 12: 1) 42...Qxh5 [Fritz 12: 2) 42...Ne6+ 43.Rxe6 Qxe6 44.e5 Qe7 45.g4 Kg8 46.Ke4 Qe6 47.Qd4 Qc6+ 48.Kf4 Qc1+ 49.Qe3 Qc7 50.Kg3 Qe7 51.Qc3 b5 52.f4 Qd7 53.Qe3 Qd5 54.f5 Kf8; Fritz 12: 3) 42...Qh2 43.Rf5 Qxh5 44.g4 Qh1 45.Ke3 f6 46.Kd2 Qg2+ 47.Kd1 Qf2 48.Kc1 b5 49.Kd1 Kg6 50.Qb3; Fritz 12: 4) 42...f6 43.Re8 Qxh5 44.Re7 Nh3+ 45.Ke3 Qg5+ 46.Ke2 Ng1+ 47.Kd1 Qb5 48.Qxf6 Qd3+ 49.Kc1 Qxa3+ 50.Kc2 Qa2+ 51.Qb2 Qxb2+ 52.Kxb2 Nxf3 53.e5 h5; Fritz 12: 5) 42...b5 43.Qc5 Qxh5 44.Rxg5 hxg5+ 45.Qxg5 Qh2 46.Qh4+ Qxh4+ 47.gxh4 Kg8 48.Ke5 Kf8 49.f4 Ke8 50.Kd5 Ke7 51.e5] 43.g4 Qh2+ 44.Ke3 Nxf3 45.Rf5 Nh4 Diagram

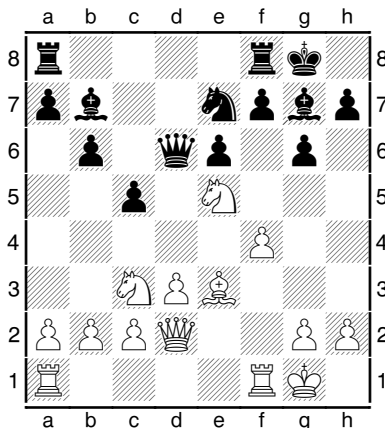


[45...Ng5 Fritz 12: 1) 46.Kd3 (Fritz 12: 2) 46.Qd3 Qh3+ 47.Kd2 Qxg4 48.Kc2 h5 49.Qd1 Qxe4+ 50.Qd3 Qa4+ 51.Kb1 Kh6 52.Rb5 h4 53.Rxb6+; Fritz 12: 3) 46.Kd4 Qe2 47.Qd3 Qxg4 48.Qe3 g6 49.Rd5 Qd1+ 50.Kc3 Qa4 51.Kb2 Qxe4 52.Qxe4 Nxe4; Fritz 12: 4) 46.Qb4 Qg3+ 47.Kd2 Qxg4 48.Ke3 Qg3+ 49.Ke2 f6 50.a4 Kg6 51.a5 bxa5 52.Rxa5 Qg2+; Fritz 12: 5) 46.Rd5 Qg1+ 47.Kd3 Qxg4 48.Qe1 Ne6 49.Kc2 Nc5 50.Qe3 Qe6 51.Rd4 Qc6) 46...Qg1 47.Qd2 Qxg4 48.Qe3 f6 49.Rd5 Qd1+ 50.Kc3 Qa4 51.Kb2 Qxe4 52.Qxe4+ Nxe4] **46.Rxf7 Qg3+ 47.Kd2 Qxg4 48.Qd3 Qg5+ 49.Kc2 Qe5 50.Qd5 Qh2+ 51.Kb3 Qg3+ 52.Kb4 Qg1 53.Kb5 Qg6 [53...Ng6] 54.Rb7 Qg1 55.Rb8 Qb1+ 56.Kc6 Qb2 57.Qg8+ Kg6 58.Rxb6 Qd4 59.Kc7+ Kg5 60.Qd8+ Qxd8+ 61.Kxd8 1-0**

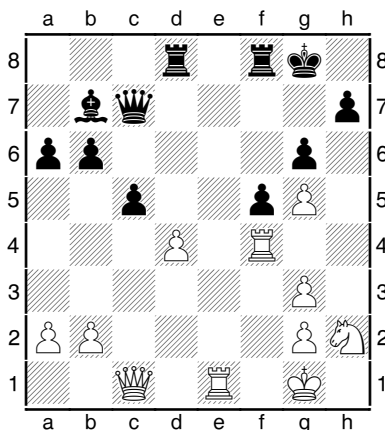
Rutkofske,Lon (1833) - Bedy,Noel (1423) [B23] Closed Sicilian Defense

PHCC August USCF Mini Swiss G90, Port Huron Chess Club (1), 11.08.2011

1.f4 c5 2.e4 Nc6 3.Nc3 g6 4.Nf3 Bg7 5.Bc4 e6 6.0-0 Nge7 7.e5 d6 8.Bb5 0-0 9.Bxc6 Nxc6 10.exd6 Qxd6 11.d3 b6 12.Be3 Bb7 13.Qd2 Ne7 14.Ne5 Diagram



I offered the pawn here in hopes of getting counterplay, and eliminating the KB. This would provide me with much needed space on the black squares and K-side threats and was well worth the pawn. **14...Nf5 15.Nb5 Qd8 16.Bf2 a6 17.Nc3 Qc7 18.Rae1 Rad8 19.Qc1 Ba8 20.Ne4 f6 21.Nf3 Bh6 22.Bg3 Nxc3 23.hxc3 e5 24.Nh2 f5 25.Ng5 Bxc5 26.fxc5 e4 27.Rf4 exd3 28.cxd3 Bb7 29.d4** Diagram



29...Qc6 30.Nf3 c4? [Fritz 12: 1) 30...cxd4 31.Qxc6 Bxc6 32.Rxd4 Rxd4 33.Nxd4 Be4 34.g4 Rd8 35.Nf3 Bxf3 36.gxf3 fxc4 37.fxc4 Rd4 38.Kf2 Rxc4 39.Re8+ Kf7 -0.69/14 ; Fritz 12: 2) 30...Rxd4 31.Rxd4 cxd4 32.Qxc6 Bxc6 33.Re6 Bd5 34.Rxb6 d3 35.Rd6 Bxa2 36.Rxd3 Rb8 37.Rd2 Bc4 38.Ne5 -0.57/14 ; Fritz 12: 3) 30...Rfe8 31.Rxe8+ Rxe8 32.Qc4+ Qd5 33.dxc5 bxc5 34.Kf2 Kg7 35.Qc3+ Kf7 36.Rh4 Kg8 37.Qc4 Re7 38.Kg1 Qxc4 39.Rxc4 -0.50/13 ; Fritz 12: 4) 30...c4 31.Qc2 Qc7 32.Ne5 b5 33.Qf2 Qd6 34.Re2 Be4 35.Ng4 Rde8 36.Nf6+ Rxf6 37.gxf6 -0.46/13 ; Fritz 12: 5) 30...Rc8 31.dxc5 Qxc5+ 32.Qxc5 Rxc5 33.Rb4 b5 34.Nd4 Rfc8 35.Kf2

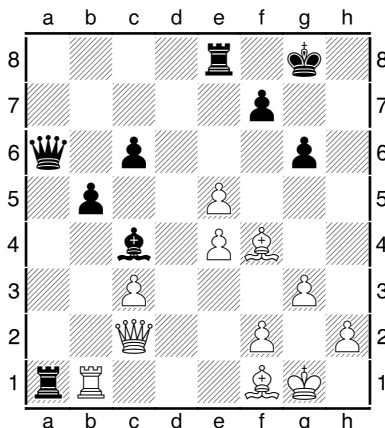
Be4 36.a4 bxa4 37.Rxa4 Rd8 38.g4 Rb8 -0.42/13] **31.Qc2 h6?? 32.gxh6 g5 33.Rxf5 Qxh6 34.Rxg5+ Kh8 35.Ree5 Bxf3 36.gxf3 1-0**

Gregg, Alan (2017) - Jones, G. Avery (1519) [D74] Fianchetto Grunfeld

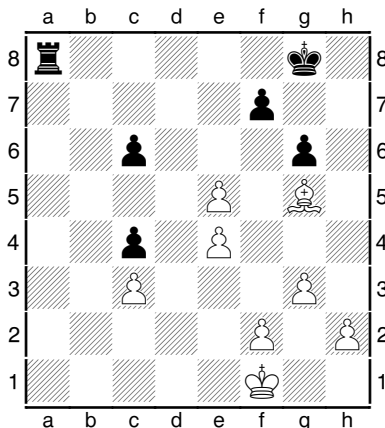
PHCC August USCF Mini Swiss G90, Port Huron Chess Club (1), 11.08.2011

1.c4 Nf6 2.g3 g6 3.d4 d5 4.Bg2 Bg7 5.Nc3 c6 6.cxd5 Nxd5 7.Nf3 0-0 8.0-0 Nd7 9.e4 Nxc3 10.bxc3 Nb6 11.Qc2 Be6 12.a4 Qc8 13.Ba3 Re8 14.Ng5 Bc4 15.Rfe1 h6 16.Nf3 Be6 17.Nd2 Nc4 18.Nxc4 Bxc4 19.Rab1 Rb8 20.Rb4 b5 21.Reb1 a6 22.Bc1 e5 23.axb5 axb5 24.dxe5 Bf8 25.R4b2 Ba3 26.Bxh6 Bxb2 27.Rxb2 Ra8 28.Bf4 Ra1+ 29.Rb1 Qa6 30.Bf1

Diagram



30...Rxb1 31.Qxb1 [Fritz 12: 1) 31.Qxb1 Bxf1 32.Qxf1 Qa5 33.Qd3 Rd8 34.Qf3 Qa1+ 35.Kg2 Qd1 36.Be3 Qxf3+ 37.Kxf3 Rd3 38.c4 bxc4 39.Ke2 Kg7 -0.42/15 ; Fritz 12: 2) 31.Kg2 Rxf1 32.Qd2 Qc8 33.Qd4 Rd8 34.Qe3 Rd3 35.Qa7 Rxc3 36.Bd2 Rc2 37.Qa5 c5 38.h4 -13.52/15 ; Fritz 12: 3) 31.Kh1 Qa1 32.Kg2 Bxf1+ 33.Kf3 Rd8 34.Kg4 Rb2 35.Qc1 Qxc1 36.Bxc1 Rxf2 37.Bg5 Rd3 38.c4 bxc4 39.h3 Be2+ -14.12/15 ; Fritz 12: 4) 31.e6 Rxf1+ 32.Kg2 Rxe6 33.e5 Qa1 34.Kh3 Rg1 35.Qd2 Qf1+ 36.Kh4 Rg2 37.h3 Qxf2 38.Qxf2 Rxf2 39.Be3 -13.82/14 ; Fritz 12: 5) 31.Bg5 Re1 32.h4 Rxe5 33.Qd2 Rxf1+ 34.Kh2 Rxe4 35.h5 gxh5 36.Bf6 Rg4 37.Qd8+ Kh7 38.Qh8+ Kg6 39.Qg7+ Kf5 -13.87/14] **31...Bxf1 32.Qxf1 Qa4 33.Qd3 Ra8 34.Bg5 Qc4** [Fritz 12: 1) 34...Qb3 35.Kg2 b4 36.e6 fxe6 37.e5 Qd5+ 38.Qxd5 cxd5 39.cxb4 Kf7 40.Kf3 Ra2 41.Be3 Rb2 42.Bc5 -0.13/14 ; Fritz 12: 2) 34...Qc4 35.Qxc4 bxc4 36.Be7 Ra1+ 37.Kg2 Rc1 38.Bb4 c5 39.Ba5 Ra1 40.Bb6 Ra3 41.Kf3 Rxc3+ 42.Kf4 Kg7 43.Bxc5 Rd3 0.08/14 ; Fritz 12: 3) 34...Qa2 35.Kg2 Qc4 36.Qxc4 bxc4 37.Be7 Rb8 38.Kf3 Rb3 39.Bb4 c5 40.Bxc5 Rxc3+ 41.Kf4 Kg7 42.f3 0.24/14 ; Fritz 12: 4) 34...Qa1+ 35.Kg2 Qa2 36.h4 Qe6 37.Qd4 Qg4 38.Bd2 Ra4 39.Qd8+ Kh7 40.f3 Qe6 41.Qf8 Ra1 0.31/13 ; Fritz 12: 5) 34...Qa7 35.h4 Qa2 36.Kg2 Qe6 37.Qd4 Qg4 38.Bf6 Qe2 39.Kh3 Qf3 40.Bg5 Kg7 0.39/13] **35.Qxc4 bxc4 36.Kf1** Diagram



36...Ra2 [36...Ra5 Fritz 12: 1) 37.Bf6 (Fritz 12: 2) 37.Bf4 g5 38.Bxg5 Rxe5 39.h4 Rxe4 40.Kg2 Kg7 41.Kf3 Re5 42.Be3 Rd5 43.g4 Rd3 44.Ke4 f6 45.Bd4 c5 46.Bxc5 Rxc3 47.f3 -0.32/20 ; Fritz 12: 3) 37.f3 Rxe5 38.h4 Rb5 39.Ke2 Kg7 40.g4 Rb2+ 41.Bd2 f6 42.f4 Rb1 43.Be1 Rb5 44.Bf2 Rb2+ 45.Ke3 Rc2 46.Be1 Rg2 47.Kf3 Rb2 48.h5 gxh5 49.gxh5 -0.63/20 ; Fritz 12: 4) 37.Be3 Rxe5 38.f3 Ra5 39.Ke2 Kg7 40.h4 Ra2+ 41.Bd2 Rb2 42.g4 f6 43.f4 Rb1 44.Be1 Rb5 45.Bd2 Rb8 46.h5 gxh5 47.gxh5 Re8 48.Kf3 Kh6 -0.63/20 ; Fritz 12: 5) 37.h4 Rxe5 38.f3 Rb5 39.Ke2 Kg7 40.g4 Rb2+ 41.Bd2 f6 42.f4 Rb1 43.Be1 Rb5 44.Bd2 -0.64/20) 37...Kf8 38.Ke1 Ra3 39.Kd2 Ra2+ 40.Ke3 Rc2 41.e6 fxe6 42.h4 Kf7 43.Be5 Rc1 44.Kf4 Rb1 45.g4 -0.24/20] **37.Ke1 Kf8 38.Bd2 Ke7 39.h4 Ke6** [Fritz 12: 1) 39...Ra1+ 40.Ke2 Ke6 41.f4 c5 42.Be3 Ra2+ 43.Bd2 0.00/8 ; Fritz 12: 2) 39...Ke6 40.f4 c5 41.Ke2 Ra1 42.Be3 Ra2+ 43.Bd2 0.00/21 ; Fritz 12: 3) 39...Ra5 40.f4 Ra1+ 41.Ke2 Ke6 42.Kf3 Rd1 43.Ke3 Ra1 44.Kf3 0.00/11 ; Fritz 12: 4) 39...c5 40.Ke2 Ke6 41.f4 Ra1 42.Be3 Ra2+ 43.Bd2 0.00/9 ; Fritz 12: 5) 39...Rb2 40.Ke2 Ke6 41.f4 Rb1 42.Be3 Rb2+ 43.Bd2 0.00/20] **40.f4 f6** [Fritz 12: 1) 40...Ra7 41.Ke2 Rd7 42.Be1 Rd8 43.Bd2 0.00/6 ; Fritz 12: 2) 40...Ra1+ 41.Kf2 Rb1 42.Ke3 Ra1 43.Kf3 Rd1 44.Ke3 0.00/9 ; Fritz 12: 3) 40...c5 41.Ke2 Ra1 42.Be3 Ra2+ 43.Bd2 0.00/22 ; Fritz 12: 4) 40...Rb2 41.Ke2 Rb1 42.Be3 Rb2+ 43.Bd2 0.00/22 ; Fritz 12: 5) 40...Ra4 41.Ke2 Ra1 42.Kf3 Rd1 43.Ke3 Ra1 44.Kf3 0.00/8] **41.exf6 Kxf6 42.Ke2 Ke6 43.g4 Kf6 44.h5 gxh5 45.gxh5 Ra8 46.Be3 Ra2+ 47.Kf3 Ra1 48.Bd4+ Kf7 49.h6 Kg6 50.Bg7 Rh1 51.f5+ Kh7 52.Ke3 Rd1 53.Kf4 Rd3 54.Kg5 Rg3+ 55.Kf4 Rd3 56.e5 Rxc3 57.e6 Ra3 58.e7 Ra8 59.Ke3 c3 60.Kd3 Kg8 61.Kxc3 Ra5 62.e8Q+ 1-0**

Eric Roome (1523) – Noel Bedy (1424) [D08] Albin Counter Gambit

PHCC August USCF Mini Swiss G90, Port Huron Chess Club (2), 18.08.2011

1.d4 d5 2.c4 e5 3.dxe5 d4 4.Nf3 Nc6 5.Bf4 Bb4+ 6.Nbd2 Nge7 7.a3 Bxd2+8.Qxd2 Ng6 9.Bg3 0-0 10.Rd1 Re8 11.b4 Bg4 12.Nxd4 Ncxe5 13.Qc3 Qe7 14.f3 Bd7 15.e4 c5 16.Nc2 f5 17.Bxe5 Nxe5 18.f4 Ng4 19.e5 Bc6 20.Qg3 Ba4 21.Bd3 Bxc2 22.Bxc2 cxb4 23.Bxf5 Nh6 24.Be4 bxa3 25.Bd5+ Kh8 26.0-0 Qc5+ 27.Kh1 Nf5 28.Qf2 Qxf2 29.Rxf2 Ne3 30.Rd3 Nxd5 31.cxd5 b5 32.Rxa3 a5 33.d6 b4 34.Ra4 Rec8 35.g3 b3 36.Kg2 Ra6 37.Rb2 Rb6 38.Rxa5 Rc2+ 39.Rxc2 bxc2 40.Ra8+ 1-0

Jones,Avery (1519) - Morabito,Matt (1748) [A49] Anti-King's Indian System

PHCC August USCF Mini Swiss G90, Port Huron Chess Club (2), 18.08.2011

1.d4 Nf6 2.Nf3 g6 3.g3 Bg7 4.Bg2 0-0 5.0-0 d6 6.Bg5 Bg4 7.c3 Bxf3 8.Bxf3 Nbd7 9.Qc1 c6 10.Rd1 e5 11.e4 Qa5 12.Nd2 exd4 13.Nb3 Qc7 14.Nxd4 Rfe8 15.Re1 Ne5 16.Qe3 d5 17.Rad1 Nxf3+ 18.Nxf3 Rxe4 19.Qc1 Rae8 20.Rxe4 Rxe4 21.Nd2 Re2 22.Nf1 Re8 23.Re1 Qd7 24.Rxe8+ Nxe8 25.Qe3 a6 26.Nd2 Nd6 27.Qe2 Qe6 28.Qxe6 fxe6 29.Kf1 Nf5 30.Bd8 Kf8 31.Bb6 Nd6 32.Ke2 Ke8 33.Kd1 Kd7 34.Kc2 Bh6 35.b3 Nc8 36.Bc5 b6 37.Bd4 Bxd2 38.Kxd2 Kd6 39.f4 c5 40.Be5+ Kc6 41.Kd3 Nd6 42.Bh8 Ne4 43.Be5 Nf2+ 44.Kc2 Ng4 45.h3 Nxe5 46.fxe5 b5 47.Kd3 a5 48.a3 c4+ 49.bxc4 dxc4+ 50.Kd4 g5 51.h4 gxh4 52.gxh4 h5 53.a4 Kb6 54.Ke3 bxa4 55.Kd2 Kc5 56.Kc2 a3 57.Kb1 Kb5 58.Ka2 Ka4 59.Ka1 Kb3 60.Kb1 Kxc3 0-1

Rutkofske,Lon (1833) - Gregg,Alan (2017) [A04] King's Indian Attack

PHCC August USCF Mini Swiss G90, Port Huron Chess Club (2), 18.08.2011

1.Nf3 g6 2.g3 d6 3.Bg2 Bg7 4.0-0 e5 5.d3 Ne7 6.e4 0-0 7.Nbd2 h6 8.c3 Nd7 9.a4 a5 10.Nc4 b6 11.Qe2 Ba6 12.Ne3 Nc5 13.c4 Nb3 14.Rb1 Qd7 15.Ng4?? Nxc1 16.Rfxc1 Qxg4 17.b4 axb4 18.Rxb4 Qd7 19.Qc2 Nc6 20.Rb2 Rae8 21.Bf1 f5 22.Qb3 Kh7 23.Bh3 Qf7 24.exf5 gxf5 25.Nh4 Nd4 26.Qd1 f4 27.Bg4 f3 28.Qe1 Ne2+ 29.Rxe2 fxe2 30.Qxe2 Re6 31.Qe4+ Kg8 32.f4 Rf6 33.f5 Bc8 34.Rf1 Bd7 35.Bh3 Bxa4 36.Bg2 Be8 37.g4 Qd7 38.Qd5+ Bf7 39.Qb7 Rd8 40.Bc6 Qc8 41.Qa7 Be8 42.Bd5+ Kh7 43.Ng2 c6 44.Bf3 Qb8 45.Qa3 d5 46.h4 Qd6 47.Qc1 e4 48.dxe4 dxe4 49.Bxe4 Qd4+ 50.Qe3 Qxe3+ 51.Nxe3 Rd4 52.Bb1 Bf8 53.g5 Bc5 54.Ng2 hxg5 55.hxg5 Rg4+ 56.Kh2 0-1

Gregg,Alan (2017) - Morabito,Matt (1748) [B44] Sicilian Defense Taimanov Variation

PHCC August USCF Mini Swiss G90, Port Huron Chess Club (3), 25.08.2011

1.e4 c5 2.Nf3 Nc6 3.d4 cxd4 4.Nxd4 e6 5.g3 Qc7 6.c3 a6 7.Bg2 Nge7 8.0-0 b5 9.a4 Bb7 10.axb5 Nxd4 11.cxd4 axb5 12.Rxa8+ Bxa8 13.Bf4 Qb6 14.Nc3 Ng6 15.Be3 Be7 16.d5 Bc5 17.dxe6 dxe6 18.Bxc5 Qxc5 19.Qb3 0-0 20.Qxb5 Qxb5 21.Nxb5 Bc6 22.Nd4 Bb7 23.f3 Rd8 24.Nb3 Ba6 25.Rc1 Ne5 26.Nc5 Rc8 27.b4 Nc6 28.Nxa6 1-0

Roome, Eric (1523) - Rutkofske, Lon (1833) [E90] King's Indian Defense Classical Variation
 PHCC August USCF Mini Swiss G90, Port Huron Chess Club (3), 25.08.2011
 1.e4 g6 2.d4 Bg7 3.Nf3 d6 4.c4 c5 5.d5 Nf6 6.Nc3 Bg4 7.Bd3 Nbd7 8.Bf4 0-0 9.h3 Nh5
 10.Bh2 Bxf3 11.Qxf3 Ne5 12.Bxe5 Bxe5 13.0-0 Qc8 14.Rab1 a6 15.Ne2 b5 16.Qe3 bxc4
 17.Bxc4 f5 18.f4 Bg7 19.e5 Kh8 20.Rbe1 Re8 21.Kh2 dxe5 22.fxe5 Rf8 23.Nf4 Bh6 24.g3
 Ng7 25.Qc3 g5 26.Nd3 Nh5 27.Qd2 Rb8 28.Qe2 Ng7 29.b3 a5 30.a4 Rb6 31.Qf2 f4 32.g4
 Nf5 33.gxf5 Qxf5 34.Nxc5 g4 35.Kh1 Qh5 36.Ne6 g3 37.Qg2 Rf5 38.Rf3 Qh4 39.Re4 Rxe6
 40.dxe6 Rh5 41.Bf1 Qg4 42.Qe2 Rh4 43.Bg2 Qxe6 44.Qd2 Qg6 45.Qd8+ Qg8 46.Qxg8+
 Kxg8 47.b4 1-0

Bedy, Noel (1423) - Jones, Avery (1519) [B13] Caro-Kann: Exchange Variation
 August USCF Mini Swiss G90, Port Huron Chess Club (3), 25.08.2011
 1.d4 d5 2.e4 c6 3.exd5 cxd5 4.Bd3 g6 5.c3 Bg7 6.Bf4 Nc6 7.Nf3 Bg4 8.h3 Bxf3 9.Qxf3 Nf6
 10.0-0 0-0 11.Qe2 a6 12.Nd2 Nh5 13.Bh2 Re8 14.Nf3 Rc8 15.Rfe1 Qb6 16.g4 Nf6 17.Ne5
 Qd8 18.f4 Nd7 19.Qf3 Ndx5 20.fxe5 e6 21.Rf1 Rf8 22.Bg3 Qb6 23.Qf2 Na5 24.Rab1 Nc4
 25.Bxc4 Rxc4 26.Bh4 Qc7 27.Bf6 b5 28.Bxg7 Kxg7 29.Rfc1 Qe7 30.Rc2 Rfc8 31.Rbc1
 Qg5 32.Rf1 R8c7 33.a3 a5 34.Rfc1 h5 35.Qg3 Rc8 36.h4 Qxg4 37.Qxg4 hxg4 38.Kg2 Kh6
 39.Kg3 Kh5 40.Rf1 R8c7 41.Rfc1 b4 42.axb4 axb4 43.Rf2 Rxd4 44.cxd4 Rxc1 45.Rxf7
 Kh6 46.Rf6 Rc6 47.Kxg4 Rc1 48.Rxe6 Rg1+ 49.Kh3 Rh1+ 50.Kg3 Rg1+ 51.Kh3 Rh1+
 52.Kg3 Rb1 53.Rd6 Rxb2 54.Rxd5 Rb3+ 55.Kf4 Rb1 56.Rb5 b3 57.Ke4 b2 58.Kd5 Kh5
 59.e6 Draw Agreed! ½-½

PHCC Rating List

The following list represents only current members of the Port Huron Chess Club. Current USCF ratings were used for members that had them, in order to establish the initial club rating list. The USCF rating format is used as the basis for calculating our club rating list. Members that had no USCF ratings are given a provisional rating based on their performances against regular club members who had USCF ratings. Club rated events will use these ratings for pairing purposes.

PHCC Rating List as of 8/30/11

Name	Rating
Gregg, Alan	1943
Rutkofske, Lon	1871
Morabito, Matt	1760
Broyles, Tom	1736
Wingrove, Bill	1694
Roome, Eric	1641
Bedy, Noel	1603
Oriel, Paul	1569
Jones, G. Avery	1548
Chan, Jaime	1502
Boucher, Dave	1404
Krazyca, Jay	1000
Sienkiewicz, John	1000

PHCC Speed Rating List as of 8/30/11

Name	Rating
Rutkofske, Lon	1949
Morabito, Matt	1668
Wingrove, Bill	1625
Jones, G. Avery	1485
Bedy, Noel	1440

USCF Ratings as of 8/30/11

Name	Rating
Gregg, Alan	2025
Rutkofske, Lon	1811
Morabito, Matt	1755
Broyles, Tom	1737
Wingrove, Bill	1694
Roome, Eric	1576
Chan, Jaime	1519
Jones, G. Avery	1505
Bedy, Noel	1412
Boucher, Dave	1277

Calendar of Events:

First Thursday of Each Month - Chess Clinics- 6:30 to 8:00 PM - \$7.50 per person

Sept 15-29th – USCF Rated Mini-Swiss: One round per Thursday; EF: \$10. Prizes based on entries. Register online or at the club before round one begins at 7:00PM G/90.

Corrections from August Issue

- Chan, Jaime (1477) - Wright, Eric (1261) [A85] Dutch Defense
PHCC-Brighton Rematch Warren, MI All the King's Men (1), 12.07.2011
1.c4 f5 2.d4 Nf6 3.Bg5 e6 4.Nc3 Bb4 5.a3 Bxc3+ 6.bxc3 c6 7.Nf3 d5 8.e3 0-0
9.Bd3 Nbd7 10.c5 Qc7 11.Bf4 Qd8 12.0-0 b6 13.cxb6 axb6 14.Ne5 Bb7 15.Qf3
Nxe5 16.Bxe5 Ng4 17.Bf4 Ba6 18.Bxa6 Rxa6 19.h3 Nf6 20.Rfb1 Nd7 21.Qg3
Qa8 22.Rb3 c5 23.Bd6 Rf7 24.dxc5 Nxc5 25.Bxc5 bxc5 26.Rab1 Qc6 27.Rb8+
Rf8 **28.R8b7**(White played **28. R1b7** (instead of **28. R8b7**) g6 29.Qe5 Qxb7 30.Rxb7
Rf7 31.Rb8+ Rf8 32.Rxf8+ Kxf8 33.Qb8+ 1-0
- Under the picture on page 4, the caption should read: L-R Ian Edgerle, Allen Wickerling, and Lon Rutkofske
- **Dues News:**

While dues are not required for anyone interested in playing at the club, they are required for those competing in tournament play. Annual Dues are \$20.00 for adults and \$10.00 for those under 19. Dues funds are used to offset miscellaneous expenses not funded by the Recreation Department.

Next Issue: Reports from the Michigan Open!

Check us out online on West Michigan Chess and Lake Effect Chess websites!!

Membership lapses: Bob Fiedler; Michael Petty; Mark Willard, Joel Dean; Dale Berthen; Mike Jachcinski; Chris Scholfield; Mark Fitchett

Candidate for President of the Michigan Chess Association

Lon Rutkofske



Age: 65

Family: Wife-Diane ; Daughters - Krista and Heidi;

Son – Michael; Grandchildren: Jocelyn, Colin and Jaclyn

Education: MA –Educational Administration: Western Michigan;
BA – History/Art: Michigan State

Employment: Teaching: 1968-1995: High School - History/Art;
Middle School–Science/Math/Speech

Administration: 1995-2000: Director of Secondary Curriculum –
Port Huron Schools; 2000-2004: Director of Secondary Education
– Plymouth-Canton Schools

2004- Retired after 36 years in education

Coaching: 1968 – 1971 - Middle School football/Tennis head coach

1971 – 1995 - HS Football, head coach varsity, JV and Frosh programs

HS Tennis, Varsity and JV

Quiz Bowl Head Coach

Establishing Chess Programs:

1968 – 1995 - Created and ran successful chess clubs at Washington MS; PH Central HS and PH
Northern HS

1995 -2000 – Implemented K-12 District-wide Chess program at 18 Elementary, MS and HS in
Port Huron including annual K-12 Scholastic Tournament (still running today)

2000-2004- Supported chess programs at Secondary level at PCCS with simultaneous exhibitions
and instruction.

1969-2011 – Founded and Administered the Port Huron Chess Club (through the Port Huron
Rec. Dept.)

1983-1995 – USCF local/accredited Tournament Director (awaiting recertification)

TD for all PHCC tournaments, 1994 Port Huron Open; 4 Blue Water International
tournaments in conjunction with Sarnia (Ont. CA) Chess Club

1970- 2011 - Editor/publisher/reporter/writer – Chess Chatter: PHCC’s monthly newsletter

Contributor to Michigan Chess Magazine from time to time.

2010-2011 - Co-webmaster: Port Huron Chess Club Website:

<http://porthuronchessclub.yolasite.com/>

Individual Chess Accomplishments:

1959 - Learned chess at age 13 while living in Japan

1963 & 1964 - High School League Championship Team, second board

1967 – Champion –Armstrong Hall, MSU

1973 – Champion -125th Michigan Army National Guard: Camp Grayling

1982 – Michigan Amateur Champion

1991 & 1992 – Michigan Class A Champion

1970-2011 - Port Huron Chess Club Champion /co-champion: 17 times; Port Huron Chess Club

Speed Champion/co-champion: 13 times

Vision:

My vision is to help implement the new vision statement that I helped develop as directed by the MCA Board this spring. I firmly believe that all decisions made by the MCA Board need to be driven by the vision and outcomes that follow.

Successful organizations clearly articulate their purpose and commitment. They develop a systemic set of measurements for targeted outcomes that provide concrete performance evidence, collect and evaluate this data on a regular basis, and utilize this information to drive decision-making to advance their purpose and commitment. It is time for the Michigan Chess Association to embrace a mantra that can provide its constituents with clear, measureable goals and outcomes that enable it to better identify and meet their needs. "What gets measured, gets done!" – Dr. Thomas Peters (In Search of Excellence - 1982; Thriving in Chaos – 1987) identifies a proven prescription for success. It is time the MCA embraces a new mission, and a means for measuring it. What follows is a recommendation for a new mission statement and a series of measureable outcomes that can ensure MCA a quantifiable path to success.

The mission of the Michigan Chess Association is to promote growth and support opportunities for Michigan chess players, to provide avenues for improving their knowledge and skills, to create venues for players to engage in chess activities, both serious and casual, to foster chess related communication between players, clubs and organizations that support chess locally, nationally and internationally, and to represent the best interests of the Michigan chess community.

To accomplish our mission, MCA will:

1. Remain fiscally/and financially sound for its constituents;
2. Publish a quality state magazine at least 6 times a year, (offering members the option of online or hardcopy);
3. Maintain a current/updated website listing a regular schedule of events and providing a clearinghouse for appropriate recognition and news related to the state organization, events and activities;
4. Hold quarterly business meetings and publish its actions/minutes on the website ;
5. Schedule regular opportunities, events and tournaments for rated play for all levels of players with a focus on providing competitive events of national caliber;
6. Support the growth of chess throughout the state by fostering a strong program of scholastic chess competitions, tournaments and activities;
7. Institute a forum/network for ongoing chess dialogue/communication for all constituent individuals, groups and organizations;

8. Build strong partnerships with other chess-related organizations by representing the interests of its constituents at the state, national and international levels. This includes providing support for its members that receive invitations to national and international events.