



# Chess Chatter

Newsletter of the Port Huron Chess Club

---

**Editor: Lon Rutkofske    September 2012    Vol.31 Number 9**

---

The **Port Huron Chess Club** meets Thursdays, except holidays, from 6:30-10:00 PM, at Palmer Park Recreation Center, 2829 Armour Street, (NE corner of Garfield Street and Gratiot Ave...1 mile North of the Blue Water Bridge) Port Huron, Michigan. Everyone is welcome. All equipment provided. Website: <http://porthuronchessclub.volasite.com>

---

## Letter from the World Open

Avery Jones send me this correspondence from his recent foray to Philadelphia. I felt it appropriate to include his perspectives in this month's *Chess Chatter*:

*Hello Lon,*

*Sorry about the tardiness of these games. Here is one of my wins and another one of my many losses. In the winning game, the guy made a blunder I was able to capitalize and hold on to push things through and he resigned. The loss was a peculiar game, the guy came at me like a roaring lion, I was able to make my way through but because of major time trouble - I lost BUT... I learned a lot from that game, you have to look for good moves. For example, in the loss, if instead of moving the queen to h3 I had brought Bishop up to the h file, things may have been different. Believe it or not he allowed me to get the second bishop into the game BUT I JUST COULD NOT MAKE GOOD MOVES because of my poor management of my time. He used less than 15 minutes for his entire game!*

### Summary

*The 2012 World Open was a fantastic experience, Philadelphia is a nice tourist city. I am going back there for sure. Next year the World Open is in Virginia, I don't know if I will be going to that. Overall, I had fun. The drive through Ohio and Pennsylvania was also enjoyable, there is a lot of open space in North America.*

*I will be playing in the Michigan Open this year, hope to see you there.*

*Once again sorry about of the tardiness of the games - I will probably see you on Thursday.*

*Avery*

### **Northrup,Cory (1546) - Jones,George Avery (1484) [B18] Classical Caro-Kann**

2012 World Open Philadelphia, PA (2), 04.07.2012

**1.e4 c6 2.d4 d5 3.Nc3 dxe4 4.Nxe4 Bf5 5.Ng3 Bg6 6.h4 h6 7.Be3 Nf6 8.Bd3 Bxd3 9.Qxd3 e6 10.0-0-0 Qd5 11.c4 Qa5 12.Kb1 Na6 13.a3 Ng4 14.N1e2 Rd8 15.Qe4 Nf6 16.Qc2 Ng4 17.Rd2 Qb6 18.c5 Qc7 19.Bf4 Qc8 20.Nc3 Nc7 21.Nce4 Nd5 22.Nd6+ Bxd6 23.Bxd6 Ngf6 24.Re1 Ne7 25.Nf5 Nfd5 26.Bxe7 Nxe7 27.Nd6+ Rxd6 28.cxd6 Nd5 29.g3 0-0 30.Rde2 Qd7 31.Re4 Qxd6 32.Qc5 Qc7 33.Re5 b6 34.Qc2 Nf6 35.f3 Rc8 36.g4 Nd7 37.R5e3 Qg3 38.h5 Nf6 39.Rc3 Qxe1+ 40.Ka2 c5 41.b4 Nd5 42.Rb3 c4 0-1**

### **Walker,Robert (1421) - Jones,George Avery (1484) [B12] Advance Caro-Kann**

2012 World Open Philadelphia, PA (8), 08.04.2012

**1.e4 c6 2.d4 d5 3.e5 Bf5 4.Bd3 Bxd3 5.Qxd3 e6 6.f4 Ne7 7.Ne2 Nf5 8.0-0 Qb6 9.g4 Ne7 10.f5 Nd7 11.Kh1 0-0-0 12.c3 Kb8 13.b4 Rc8 14.a4 Qd8 15.Nd2 h5 16.fxe6 fxe6 17.Nf4 Qe8 18.Nxh5 Rxh5 19.gxh5 Qxh5 20.Nf3 Nf5 21.Rg1 Be7**

22.Bf4 Rh8 23.Rg2 Qh3 24.Qe2 g5 25.Nxg5 Bxg5 26.Rxg5 Nh4 27.Rg3 Qf5 28.Rf1 Qh7 29.Rfg1 Nf8 30.b5 cxb5 31.axb5 Black lost on time! 1-0

## Rutkofske/Wilkinson tie for first in August Quads

Lon Rutkofske and Stew Wilkinson finished in a dead heat as Avery Jones and Noel Bedy nipped each of the frontrunners for half a point in the third round of the August USCF Quads. Originally touted to be a Mini-Swiss, and slated to begin on August 9<sup>th</sup>, Alan Gregg decided to withdraw rather than force a series of byes due to the registration of an odd number of entrants. On a positive note, Bill Wingrove's USCF membership renewal should enlarge the pool of prospective players in future club sponsored USCF rated events.

### August 2012 USCF Rated G/90 Quads

#	Name	Rtng	Post	Rd 1	Rd 2	Rd 3	Tot
1	Stewart Wilkinson	1847	1841	W4	D2	D3	2.0
2	Lonnie Rutkofske	1831	1827	W3	D1	D4	2.0
3	G Avery Jones	1484	1529	L2	W4	D1	1.5
4	Noel Bedy	1539	1528	L1	L3	D2	0.5

## Members' Games

*Please send me what you consider your best games, annotated or not, so that I might be able to showcase them. The following games represent contests that have been available at the time of this printing. Email them to me or give them to me personally, if you wish. Majority of analyses is done by Fritz 12, unless otherwise indicated.*

### **Jones,George Avery (1484) - Rutkofske,Lonnie (1831) [D79] Fianchetto Grunfeld**

August 2012 USCF Quads G/90 Port Huron (1), 16.08.2012

1.d4 c5 2.c3 cxd4 3.cxd4 g6 4.Nf3 Bg7 5.Nc3 d5 6.g3 Nf6 7.Bg2 0-0 8.0-0 Ne4 9.Bf4 Nxc3 10.bxc3 Qa5 11.Qb3 Nd7 12.Ne5 Nb6 13.Rfc1 Be6 14.Qc2 Rac8 15.Qd2 Nc4 16.Nxc4 Rxc4 17.Bh6 Rfc8 18.Bxg7 Kxg7 19.Qe3 Qc7 20.Rab1 b6 21.Rb3 Qd6 22.h4 h6 23.Qe5+ Qxe5 24.dxe5 d4 25.Bb7 R8c7 26.Ba6 Rxc3 27.Rbxc3 Rxc3 28.Rxc3 dxc3 29.Bd3 Bxa2 30.Bc2 b5 31.Kf1 a5 32.Ke1 a4 33.Kd1 Bb3 34.Kc1 f5 35.exf6+ exf6 36.Bd3 b4 37.Kb1 Be6 38.Ka1 b3 39.Kb1 a3 40.e3 a2+ 41.Ka1 b2# 0-1

### **Wilkinson,Stewart (1847) - Bedy,Noel (1539) [B01] Scandinavian Defense**

August 2012 USCF Quads G/90 Port Huron (1), 16.08.2012

1.e4 d5 2.exd5 Qxd5 3.Nf3 Nf6 4.d4 Bg4 5.Be2 Nc6 6.0-0 e6 7.Be3 Bd6 8.Nbd2 0-0-0 9.c4 Qf5 10.c5 Bf4 11.g3 Bh6 12.Nh4 Bxe2 13.Qxe2 Qd5 14.Nb3 g5 15.Nf3 g4 16.Nh4 Bg5 17.Ng2 h5 18.Bxg5 Qxg5 19.Qe3 Qf5 20.Rac1 Nd5 21.Qe2 Rhe8 22.Nh4 Qf6 23.Rfd1 e5 24.dxe5 Nxe5 25.Qf1 c6 26.Nd4 Ng6 27.Nhf5 h4 28.Nd6+ Rxd6 29.cxd6 Qxd6 30.Nf5 Qf6 31.Rxd5 1-0

### **Rutkofske,Lonnie (1831) - Wilkinson,Stewart (1847) [A16] English**

August 2012 USCF Quads G/90 Port Huron (2), 23.08.2012

1.c4 e6 2.g3 d5 3.Bg2 Nf6 4.Nf3 Be7 5.0-0 0-0 6.cxd5 exd5 7.d3 Nbd7 8.Re1 c6 9.Qc2 h6 10.Nc3 Nb6 11.a3 Bf5 12.Qb3 d4 13.Na4 Be6 14.Qc2 Bd5 15.Nc5 Bxc5 16.Qxc5 Bxf3 17.Bxf3 Qd7 18.Bd2 Rfe8 19.b4 Rad8 20.Rac1 Nc8 21.Bf4 a6 22.Rc4 Qe7 23.Qxe7 Rxe7 24.h3 Nb6 25.Rc2 Nfd5 26.Bd2 Rde8 27.Kf1 Rd8

**28.Rc5 Na4 29.Ra5 Nac3 30.Rc5 Na4 31.Rc4 Nf6 32.h4 Nb6 33.Rc5 Nbd7 34.Rc2 Ne5 35.Bg2 Neg4 36.a4 h5 37.Bg5 Rde8 38.Be4 Re6 39.Rc4 Nxe4 40.dxe4 Rxe4 41.f3 Ne3+ 42.Bxe3 Rxe3 43.Rxd4 Ra3 44.a5  $\frac{1}{2}$ - $\frac{1}{2}$**

**Bedy,Noel (1539) - Jones,G. Avery (1484) [D02] Queen's Pawn Opening**

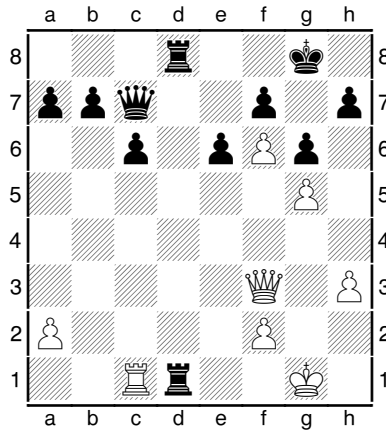
August 2012 USCF Quads G/90 Port Huron (2), 23.08.2012

**1.d4 d5 2.Bf4 Nf6 3.e3 g6 4.Nd2 Bg7 5.Ngf3 Bg4 6.Be2 0-0 7.h3 Bf5 8.0-0 Nbd7 9.c4 c6 10.Qb3 b6 11.Bd3 Bxd3 12.Qxd3 c5 13.cxd5 Nxd5 14.Bg3 Rc8 15.dxc5 Nxc5 16.Qa3 a5 17.Rfd1 Qe8 18.Rac1 Nb4 19.Be5 Bxe5 20.Nxe5 Qb5 21.Ndf3 Rfd8 22.Rxd8+ Rxd8 23.Nd4 Qa6 24.Nec6 Nxc6 25.Nxc6 Rd3 26.Nb4 axb4 0-1**

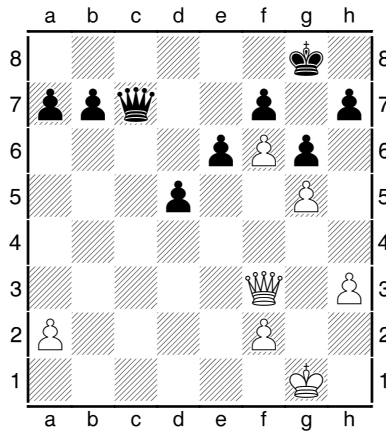
**Wilkinson,Stewart (1847) - Jones,G. Avery (1484) [B15] Caro-Kann**

August 2012 USCF G/90 Quads Port Huron Chess Club (3), 30.08.2012

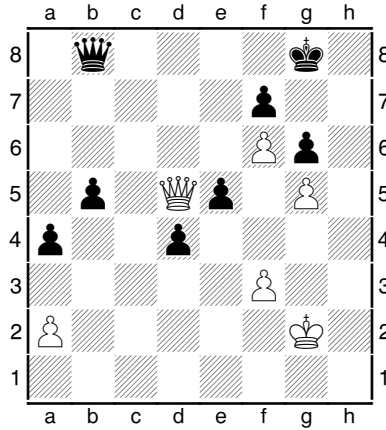
**1.e4 g6 2.d4 Bg7 3.Nc3 c6 4.Nf3 d5 5.e5 Bg4 6.h3 Bxf3 7.Qxf3 e6 8.Bd3 Nd7 9.Bf4 Qb6 10.Ne2 Qxb2 11.0-0 Qb6 12.Rab1 Qc7 13.c4 Ne7 14.Bg5 dxc4 15.Bxe7 Kxe7 16.Bxc4 Nb6 17.Bb3 Rhe8 18.Ng3 Kf8 19.Ne4 Kg8 20.Rbc1 Rad8 21.Rfd1 Nd5 22.Nd6 Re7 23.Ne4 Ree8 24.Bxd5 Rxd5 25.g4 Red8 26.Nf6+ Bxf6 27.exf6 Rxd4 28.g5 Rxd1+ Diagram**



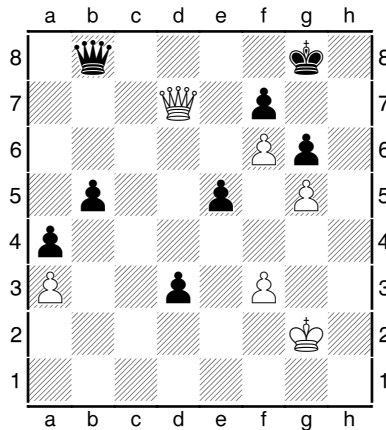
[Better was 28...Qe5!] **29.Rxd1 Rd5 30.Rxd5 cxd5** Diagram



[30...ed seemed stronger creating a pawn formation that seems unstoppable.] **31.Qa3 b6 32.Qa4 Qc1+ 33.Kh2 Qc7+ 34.Kg2 Qb8 35.h4 e5 36.Qd7 d4 37.h5 b5 38.hxg6 hxg6 39.f3 a5 40.Qd5 a4** Diagram



[40...Qe8 keeping the pawn duo abreast seems to be a better choice. If then 41.a3, Qb8 would create the threat of a passed pawn on the Q side.] **41.a3 Qe8 42.Kg3 Qb8 43.Kg2 Qe8** [44..Kg3 creates the threat of a draw by repetition.] **44.Qb7 d3 45.Qe7 Qb8 46.Qd7** Diagram



**46...e4 47.fxe4 Qe5 48.Qc8+ Kh7 49.Qh3+ Kg8 50.Qc8+ ½-½** Avery had less than two minutes, whereas Stew had over a dozen minutes remaining, so a draw seemed to be the ultimate desire for both players.

**Bedy,Noel (1539) - Rutkofske,Lonnie (1831) Schmid Benoni**

August 2012 USCF G/90 Quads Port Huron Chess Club (3), 30.08.2012

**1.e4 g6 2.d4 c5 3.d5 Bg7 4.Nc3 d6 5.Nf3 Nd7 6.Bb5 a6 7.Bxd7+ Bxd7 8.0-0 b5 9.Re1 b4 10.Ne2 Nf6 11.e5 dxe5 12.Nxe5 0-0 13.Nxd7 Qxd7 14.c4 Rfd8 15.Be3 Rac8 16.Qc2 e6 17.dxe6 Qxe6 18.Nf4 Qc6 19.Rad1 Bf8 20.Rxd8 Rxd8 21.Rd1 Rxd1+ 22.Qxd1 Qe4 ½-½**

**Jarosz,Stan 1942 - Rutkofske,Lonnie 1816 [A31] Symmetrical English**

2012 MI Senior Championships Flint, MI (1), 04.08.2012

**1.d4 Nf6 2.c4 c5 3.Nf3 g6 4.Nc3 Bg7 5.e4 0-0 6.Be2 cxd4 7.Nxd4 d6 8.Be3 Na6 9.0-0 Nc5 10.f3 a6 11.Qd2 Ne6 12.Rfd1 Re8 13.Rac1 Qa5 14.Nxe6 fxe6 15.Nd5 Qxd2 16.Nxf6+ Bxf6 17.Rxd2 b6 18.b4 Rb8 19.c5 bxc5 20.bxc5 dxc5 21.Rxc5 Rb2 22.Rxb2 Bxb2 23.Bc4 Kf7 24.Rc6 Rd8 25.Bxa6 Bxa6 26.Rxa6 Rc8 27.Rb6 Ba3 28.Rb3 Bc1 29.a3 Rc2 30.Bxc1 Rxc1+ 31.Kf2 Rc2+ 32.Kg3 Ra2 33.h4 h6 34.f4 h5 35.Kf3 Kf6 36.g3 e5 37.Rb6+ e6 38.Ra6 Ra1 39.a4 Rf1+ 40.Ke2 Ra1 41.a5 Ra3 42.Ra8 Rxc3 43.a6 Ra3 44.a7 Kg7 45.fxe5 Kh7 46.Kd2 Kg7 47.Kc2 g5**

**48.hxg5 h4 49.Re8 h3??** [Just a blunder plain and simple. 49...,Ra7, 50. Re6, h3 51. Rh6, h2 52.Kb2, Ra4 should draw.] **50.a8Q 1-0**

**Rutkofske,Lonnie (1816) - Vandivier,Don (1893) [B20] Sicilian Defense**

2012 MI Senior Championships Flint, MI (2), 04.08.2012

**1.e4 c5 2.c4 Nc6 3.g3 d6 4.d3 g6 5.Nc3 Bg7 6.Nge2 Bg4 7.Bg2 Qd7 8.h3 Bxe2 9.Nxe2 e6 10.Rb1 Nge7 11.Be3 0-0 12.0-0 b6 13.Qc1? Rad8 14.a3 d5 15.Bh6 f5 16.Bxg7 Kxg7 17.f4 dxe4 18.dxe4 fxe4 19.Qc3+ Nd4 20.Rbd1 Kg8 21.Qe3 Nef5 22.Qxe4** [Don pointed out that 22...Ne2+ 23.Qd2, Ng3 looks very exciting, but after 24.Qf3, things dont look as promising.] **22...Qf7 23.Kh2 Rd6 24.Rde1 Rfd8 25.Nc3 Kg7?** [Again, both of us find ample ways to waste valuable tempi...] **26.Qe5+ Qf6??** [This loses the exchange to 27.Qf6+, Kf6 28. Ne4+!] **27.Ne4??** [It is obvious that both of us are playing too fast, since I return the favor!] **27...Qxe5 28.fxe5 R6d7 29.Nf6 Nc2** [This is a nice shot, and gives Black the winning edge as he takes control of the d file. 30Nd7, Ne1 31.Re1, Rd7 32.Re2, Rd3 gives Black a great game.] **30.Rc1 Rd2 31.Ne4 Re2 32.Rf2 Rxf2 33.Nxf2 Rd2 34.Ne4** [Black has to settle for the repetition in order to save his knight.]  $\frac{1}{2}$ - $\frac{1}{2}$

**La Forge,Tom (1870) - Rutkofske,Lonnie (1816) [B01] Scandinavian Defense**

2012 MI Senior Championships Flint, MI (3), 05.08.2012

**1.e4 d5 2.exd5 Nf6 3.d4 Nxd5 4.Nf3 g6 5.c4 Nf6 6.Nc3 Bg7 7.Be2 0-0 8.0-0 c6 9.Be3 Nbd7 10.Qd2 Re8 11.Rfd1 Qa5 12.a3 Ng4 13.Bf4 e5 14.b4 Qc7 15.Bg3 Qd8 16.dxe5 Ngxe5 17.Nxe5 Bxe5 18.Bxe5 Rxe5 19.Bg4 Qc7 20.f4 Re8 21.Bxd7 Bxd7 22.Qxd7 Re1+ 23.Kf2 Qxd7 24.Rxd7 Rxa1 25.Rxb7 Rxa3 26.Ne4 Rd8 27.Nf6+ Kg7 28.Nd7 a5 29.bxa5 Rxa5 30.g4 Rda8 31.Ne5 Ra2+ 32.Ke3 R8a7 33.Rxa7 Rxa7 34.Nxc6 Rc7 35.Ne5 f6 36.Nf3 Rxc4 37.h4 Ra4 38.g5 Ra3+ 39.Kf2 f5 40.Ne5 h6 41.Kg2 Re3 42.Nf3 hxg5 43.hxg5 Kf7 44.Kf2 Re4 45.Kg3 Re6 46.Nd4 Re3+ 47.Nf3 Ke6 48.Kf2 Re4 49.Kg3 Kd5 50.Nh4 Re6 51.Kf3 Kd4 52.Ng2 Kd3 53.Nh4 Kd2 54.Ng2 Ra6 55.Nh4 Re6 56.Ng2 Re7 57.Nh4 Rg7 58.Kf2 Kd3 59.Kf3 Kd4 60.Ng2 Rh7 61.Kg3 Ke4 62.Ne1 Ke3 63.Nc2+ Ke4 64.Ne1 Rh1 65.Nc2 Rg1+ 66.Kf2 Rg4 67.Ne1 Kxf4 68.Nf3 Rxc5 69.Nxc5 Kxc5 70.Kg3 0-1**

**Rutkofske,Lonnie (1816) - Grzegorzcyk,Ron (1616) [A10] English**

2012 MI Senior Championships Flint, MI (4), 05.08.2012

**1.c4 g6 2.e4 Bg7 3.g3 e6 4.Nc3 Nc6 5.Bg2 Nge7 6.Nge2 0-0 7.0-0 d6 8.Rb1 a6 9.a3 Rb8 10.b4 b5 11.cxb5 axb5 12.d4 Na7 13.Be3 d5 14.Rc1 c6 15.Qb3 Bb7 16.Nf4 Nac8 17.Nd3 Nd6 18.Bf4 Ra8 19.Nc5 Bc8 20.Bxd6 Qxd6 21.e5 Qd8 22.a4 Nf5 23.Rfd1 bxa4 24.N3xa4 Ba6 25.Nxa6 Rxa6 26.Bf1 Ra7 27.Rxc6 Qa8 28.Bb5 Qb8 29.Qd3 Nxd4 30.Rb6 Qc7 31.Qxd4 Bxe5 32.Qc5 Qd8 33.Rc6 Qb8 34.Rc1 Rb7 35.Rb6 Bd6 36.Qc6 Rxb6 37.Nxb6 Bxb4 38.Nd7 Qa7 39.Nxf8 Bxf8 40.Qc7 Qa3 41.Be8 Qf3 42.Qf4 Qxf4 43.gxf4 Bh6 44.Rc7 Bxf4 45.Rxf7 e5 46.Rd7 d4 47.Bf7+ Kg7 48.Bc4+ Kh6 49.Kg2 Bg5 50.Bg8 Bf4 51.Kf3 g5 52.Bxh7 Bxh2 53.Bf5 Bf4 54.Rh7#**

## PHCC Rating Lists

The following list represents only current members of the Port Huron Chess Club. Current USCF ratings were used for members that had them, in order to establish the initial club rating list. The USCF rating format is used as the basis for calculating our club rating list. Members that had no USCF ratings are given a provisional rating based on their performances against regular club members who had USCF ratings. Club rated events will use these ratings for pairing purposes.

### PHCC Rating List as of 9/10/12

<u>Name</u>	<u>Rating</u>
Gregg, Alan	1950
Wilkinson, Stew	1865
Rutkofske, Lon	1858
Broyles, Tom	1736
Fiedler, Bob	1688
Wingrove, Bill	1664
Bedy, Noel	1618
Jones, G. Avery	1557
Boucher, Dave	1439
Dickinson, Ty	1000
Nowiski, Adam	521
Kennedy, Jimmy	500
Kennedy, Danny	500
Ferguson, Gabe	479

### USCF Ratings as of 9/10/12

<u>Name</u>	<u>Rating</u>
Gregg, Alan	2045
Wilkinson, Stew	1847
Rutkofske, Lon	1831
Fiedler, Robert	1767
Broyles, Tom	1737
Wingrove, Bill	1694
Jones, G. Avery	1529
Bedy, Noel	1528
Boucher, Dave	1274

### PHCC Speed Rating List as of 9/10/12

<u>Name</u>	<u>Rating</u>
Gregg, Alan	1971
Rutkofske, Lon	1911
Wilkinson, Stew	1865
Broyles, Tom	1708
Fiedler, Robert	1640
Wingrove, Bill	1588
Bedy, Noel	1529
Jones, G. Avery	1485
Ty Dickinson	750
Ferguson, Gabe	750
Nowiski, Adam	750
Jimmy Kennedy	750
Danny Kennedy	750

## PHCC shirts still available

Whether you have noticed or not (members of the PHCC have moved into the fashion mainstream with stylish collection of its very own. Aided by accomplished embroiderer and design artist, **Diane Rutkofske**, members of the PHCC now have access to high quality, custom creations that sport the logo of the Port Huron Chess Club.

With the price tag of just \$30, you too can enjoy the celebrity that comes with the crisp, tailored look of well-dressed chess aficionados in colors that best reflect your chess-playing mood. Whether it be burgundy, black or traditional white (other colors available on request), these *objects de arte* available in sizes S thru 2XL, will make you the envy of every chess enthusiast, be they friend or foe.

Don't miss this opportunity to become a player of distinction and exquisite taste – order your shirt/s today by contacting Diane at [drutkofske@sbcglobal.net](mailto:drutkofske@sbcglobal.net). See you on the runway!



## Calendar of Events: Note the change for the First Thursday of Each Month.

**First Thursday of Each Month** - Chess Clinics– 6:30 to 7:00 PM - \$7.50 per person. From 7:00 until 10:00, Players wishing to play games with longer time controls up to G/90 can choose to play match games if they so desire. Participants will be paired randomly and colors will be selected by lot. PHCC club ratings will be used. Players should turn their game scores into Lon, so he can adjust ratings appropriately and showcase the games in *Chess Chatter*.

**September 13 – Brian Ledsworth PHCC Junior Mini-Swiss:** 3 Rds. at G/30 – membership not required to play. Top scorer will win a one year PHCC membership, additional prizes based on entries. ! A minimum of 4 participants will be necessary to hold the event. Please contact Lon via phone or email if you plan to register. Play begins at 7:00 PM.

**September 20 - PHCC Rated Round Robin** – G/10 –rounds based on entries – PHCC membership required. EF: \$5 ...Prizes based on entries. A minimum of 4 participants will be necessary to hold the event. Please contact Lon via phone or email if you plan to register. Play begins at 7:00 PM.

**September 27 - PHCC Rated Double RR Speed Tournament** – G/5 - rounds based on entries – PHCC membership required. EF: \$5 ...Prizes based on entries. A minimum of 4 participants will be necessary to hold the event. Please contact Lon via phone or email if you plan to register. Play begins at 7:00 PM.

## Dues News:

While dues are not required for anyone interested in playing at the club, they are required for those competing in tournament play. Annual Dues are \$20.00 for adults and \$10.00 for those under 19. Dues funds are used to offset miscellaneous expenses not funded by the Recreation Department.

Membership lapses: Chan, Jaime; Hartson, Matt; Wiley, Cullen; Morabito Matt(July); Roome, Eric (Aug)