



# Chess Chatter

Newsletter of the Port Huron Chess Club

---

**Editor: Lon Rutkofske      August 2013      Vol.32 Number 8**

---

The **Port Huron Chess Club** meets Thursdays, except holidays, from 6:30-10:00 PM, at Palmer Park Recreation Center, 2829 Armour Street, (NE corner of Garfield Street and Gratiot Ave...1 mile North of the Blue Water Bridge) Port Huron, Michigan. Everyone is welcome. All equipment provided. Website: <http://porthuronchessclub.volasite.com>

---

## **Bruziewicz takes top prize in 2013 PHCC July G/30 Mini-Swiss!**

The club's top rapid play expert offered **Stew Wilkinson** a "Grandmaster Draw" on his way to securing the top finish in the July G/30 Mini-Swiss held on July 25<sup>th</sup>. **Andy Bruziewicz's** prowess in quick play is legendary in the area, dispatching both Bill Wingrove and Lon Rutkofske while coasting to the \$20 first place prize by a half-point margin.

Lon, Stew and Bill were relegated to the leftovers, splitting the \$20 second prize in the eight man Swiss that welcomed novice competitor **Kraig Archer**. Although Kraig, an instructor at St. Clair County Community College with fellow club member **Matt Morabito**, is experienced in casual play, but was at a distinct disadvantage in his first PHCC event, having to learn to manage the clock and notation simultaneously with a rapid time control thrown into the mix.

Junior member, **Nathan Hartwig**, eager to test the tournament waters at the PHCC once again, had his hopes for glory dashed, by taking the wrong exit on his journey from Chesterfield Township preventing him from meeting the registration deadline.

Game scores can be found in the Members' Games section.

### July 2013 PHCC Mini-Swiss -- Standings

#	Name	Rtng	Rd 1	Rd 2	Rd 3	Tot	Prize
1	Andy Bruziewicz	2252	W4	W2	D3	2.5	
2	Lonnie Rutkofske	1873	W6	L1	W5	2.0	
3	Stew Wilkinson	1865	W7	D5	D1	2.0	
4	Bill Wingrove	1607	L1	W8	W6	2.0	
5	Matt Morabito	1698	W8	D3	L2	1.5	
6	Avery Jones	1599	L2	W7	L4	1.0	
7	Noel Bedy	1490	L3	L6	W8	1.0	
8	Kraig Archer	unr.	L5	L4	L7	0.0	

## PH/Sarnia Chess Clubs get some attention in Sarnia's 2013 Hobbyfest !

**Stew Wilkinson**, and **Lon Rutkofske** represented the PHCC while **Andy Bruziewicz** and **Avery Jones** bolstered the Sarnia contingent in a follow up to last year's inaugural event. Sarnia's Department of Recreation extended the PHCC a second invite, but this time the fete was hosted in Canatara Park, because Centennial Park was closed.

The day was spectacular with sunny skies, low humidity, and temperatures returning to a comfortable 75-80 degree mark after the previous weeklong scorching the area experienced.

Although a rather lazy day, our booth had plenty of traffic, and we can only hope, that Andy's natural talent for politicking, cajoling, and back slapping will pay hefty dividends in the near future.



(Left to Right) Stew Wilkinson, Andy Bruziewicz and Lon Rutkofske pose for a group shot after setting up the booth at Sarnia's 21<sup>st</sup> Annual Hobbyfest. This is the second year the PHCC has been invited to present its "wares" as it were in an attempt to entice new members to take the challenge and drop by the PHCC for some stimulating fun and recreation!



Top Left: Avery Jones gives an interested bystander some friendly competition as Stew (FL) and Andy (FR) crunch each other in some 5 minute Blitz chess!



With Andy blithely leafing through some past issues of Chess Life in the background, Stew Wilkinson(L) takes on a youngster eager to test his meddle against the USCF Postal Master!



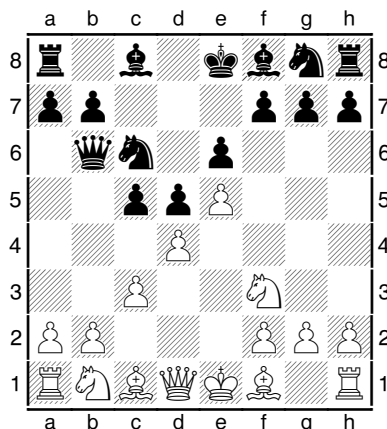
# Wilkinson on Openings:

## The French Defense: Advance Variation

*Stewart Wilkinson is a USCF-rated Postal Master, a former Port Huron Chess Club champion and a consistently top performer in many PHCC events. He is especially noted for his in-depth analyses, collegiality, knowledge of opening theory and familiarity with players in the Port Huron Chess Club.*

1.e4, e6 2.d4, d5 3.e5 initiates the French Advance Variation. Nimzowitch championed the opening 100 years ago, but according to John Watson, “no leading advocate took his place and the Advance Variation was in remission for most of the modern era.” Today however, 3.e5 has become more popular as GM’s look to avoid the complexities of 3. Nc3 and 3.Nd2, or the sterility of 3.ed5 and 3.d3. With 3.e5 White gains space (*Albeit, at the cost of a tempo.*) and plans to operate on the kingside. Black can attack the center with c5, Nc6, Qb6 and Nf5 via h6 or e7. A timely f6 often frees his game, but Black’s natural advantage lies on the Queenside. A positional struggle often ensues.

The variation was popular in the 2013 PHCC Championships. The French Advance was played 5 times out of a whopping 14 French Defenses seen this year. Two games began: **1.e4 e6 2.d4 d5 3.e5 c5 4.c3 Nc6 5.Nf3 Qb6** (*Black’s other key move 5...,Bd7 will be examined next month.*) Diagram



From the position above, White has many options:

**6.a3** – Lon Rutkofske agrees with most authorities on the French Defense that this is White’s best choice. White controls b4, threatening queenside expansion to stifle Black’s traditional counterplay.

Black can reply in several ways:

**6...., Nh6** is associated with Korchnoi and recommended by Watson. Black threatens cd4 and Nf5, planning Bd7, Rc8, Be7 and f6. Victor demonstrated another viable plan in Kilk-Korchnoi [Rilton Cup 2003] with 6....,Nh6 7.b4,cd4 8.cd4, Nf5 9.Bb2, Be7 10.Bd3, a5 11.Qa4,00 12.b5, Nh4!13.Nh4, Bh4 with equality.

**6....,c4** and Petrosian's choice, leads to a game of strategic maneuver suggested for those who enjoy closed positions. This move envisions opposite wing castling and a complex middlegame. I wouldn't play it against PHCC Champion Alan Gregg!

**6....,Bd7** is historically significant, but after 7.b4, cd4 8.cd4,Rc8 9.Bb2, White has reached the position he envisioned from 6.a3. While not decisive by any means, White's advantage exists.

**6....,a5, Ne7 and cd4** are all playable alternatives favorable to White.

**6. Be2** is White's traditional choice leading to tactical play and balanced chances. Two French Defense icons met in Sveshnikov-Portisch, [Biel, 1993]....,cd4 7.cd4, Nh6 8.b4, Nf5 9.Bb2, Bb4+ 10.Kf1, Be7 11.Nc3, Qd8 12.g3, f6 and the position is difficult to assess.

**6.Na3** allows 6....,cd4 7.cd4, Bb4+ 8.Bd2, Ba3 and Black has at least equalized.

**6.dc5?!**, Bc5 and Black can open things up with f6 after White defends f2.

**6.Qb3** leads to a bland middlegame after the Queens are exchanged.

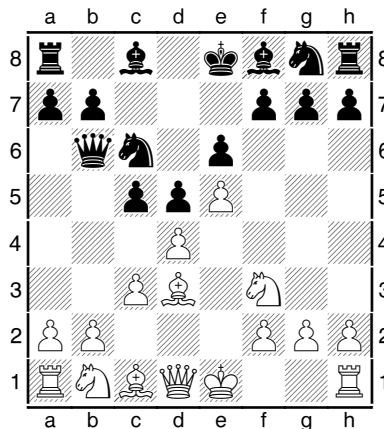
**6.g3?!**, f6! And White's lack of development gives Black a great game!

**6.Bd3** was Tom Broyles' choice:

**Broyles,Thomas (1736) - Boucher,David (1439) [C02] French Defense, Advance**

2013 PHCC Championships St. Clair, MI (2), 17.04.2013

**1.e4 e6 2.d4 d5 3.e5 c5 4.c3 Nc6 5.Nf3 Qb6 6.Bd3** Diagram

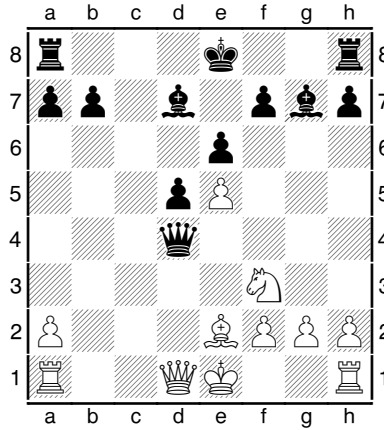


[White invites the Milner-Barry Gambit, sacrificing d4 to gain time chasing the Black monarch. Although theory favors Black, White has practical chances. I suggest John Watson's *Play the French* series for complete analyses.]

**6...cxd4** [Fixing d4 as a weakness.] **7.cxd4 Bd7 8.Be2** [Sorry Noel, no gambit!!]

**8...Nh6** [Fritz prefers 8....,Ne7.] **9.Bxh6 Qxb2 10.Bxg7?** [After Nbd2 the position would be equal.]

**10...Bxg7 11.Nbd2 Nxd4 12.Nxd4** [Fritz suggests Rb1.] **12...Qxd4 13.Nf3** Diagram



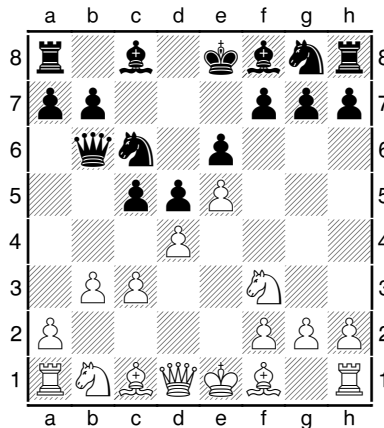
[From the diagrammed position, Black finds the best move according to Fritz. However, the simple 13....,Qd1+ might be a better practical choice. The resulting endgame favors Black and White is hard-pressed to find counter play.] **13...Qc3+! 14.Kf1 Rc8 [-,+]** Tom miraculously went on to win with a fine attacking game [15.g3 Bxe5 16.Nxe5 Qxe5 17.Rb1 Bc6 18.Qb3 a6 19.Bf3 Bb5+ 20.Kg2 Rc3 21.Qd1 Ke7 22.Re1 Qd6 23.Qd4 Rcc8 24.Bxd5 Bc6 25.Qh4+ f6 26.Bxc6 Qxc6+ 27.Kg1 b5 28.Qh6 Rcg8 29.Rbc1 Qb7 30.Qf4 Rc8 31.Rcd1 Qb6 32.Qh6 Rcg8 33.Qd2 h5 34.Qd7+ Kf8 35.Rxe6 Rg7 36.Re8# 1-0] , but the opening was a smashing success for Dave!

**6.b3?!** was Bob Fielder's move:

**Fiedler,Robert (1688) - Boucher,Dave (1439) [C02] French Defense, Advance**

2013 PHCC Championships Port Huron, MI (15), 29.04.2013

**1.e4 e6 2.d4 d5 3.e5 c5 4.c3 Nc6 5.Nf3 Qb6 6.b3?! Diagram**



**6...cxd4 7.cxd4 Bb4+ 8.Bd2 Nxd4 9.Bxb4?** [White has many ways to err in this position; 9.Bd3, Bc3, a3, Nce and Nd4. However, 9. Bb5+! is a tactical resource that makes the best of a sticky situation.] **9...Qxb4+ 10.Nbd2 Qc3** [10....,Nf3+ is better!] **11.Nxd4 Qxd4 12.Nf3** [Again the check on b5 is better.] **12...Qc3+! 13.Ke2** [Once again Dave has played the opening beautifully. After 13....,Bd7 his edge would be obvious. 13....,Ne7 or Nh6 are alternatives.] **13...Qb2+? 14.Ke3?** [14.Ke1 would be equal.] **14...Ne7** [And White escaped

disaster, to survive the opening only down a pawn. Bob Fiedler eventually went on to win a wild game despite the problems created by **6.b3?!]**

[The game concluded: 15.Qd2 d4+ 16.Ke4 Qa3 17.Bb5+ Nc6 18.Bxc6+ bxc6 19.Qxd4 Bb7 20.Qc3 c5+ 21.Ke3 Rd8 22.Rhd1 0-0 23.Rxd8 Rxd8 24.Qc1 Qb4 25.Qe1 Qb6 26.Kf4 h6 27.Qc3 g5+ 28.Kg3 Qc7 29.Re1 Qe7 30.Re3 h5 31.h3 Rd1 32.Re1 Rd3 33.Qxd3 1-0]

Next month we will examine: “Euwe’s Move” - 1.e4 e6 2.d4 d5 3.e5 c5 4.c3 Nc6 5.Nf3 **Bd7!**? in the French Advance Variation.

## How to set the new club digital chess clocks!

Sometimes when starting to set the clock, you will find that the display is not functioning or is frozen. If this happens, remove and replace the batteries, then click the on switch once again and this should solve the problem.

### **Lesson 3 – Tournament time controls:**

Our new clocks come with several preset **Tournament Play** settings. There are four preset Tournament time controls: Using the up down feature, find the settings for 2A, 2B, 2C or 2D. (A graphic chart is available on the bottom of the clock as well.) These can be access through the toggle switch in the lower left hand clock face. Once you have turned the clock on, check the bottom left hand corner of the display. Since all USCF rated tournaments now require at least a 5 second/move delay, this is automatically programmed into all of the preset settings for tournament play, but you can edit each section as well as the delay time for each if you choose by using the editing procedure described below:

*All Preset modes can be edited to suit your time choices in the following manner:*

- 1. Find the mode you want to change using UP/DOWN on the control pad (4-way toggle switch on lower left hand side of clock.).*
- 2. Press EDIT to enter editing mode.*
- 3. The left most digit on the left LCD will flash showing the position of the cursor.*
- 4. In EDIT mode, the toggle control pad changes function from mode selection to cursor movement and value adjustment.*
- 5. Pressing UP or DOWN either increases or decreases the value at the cursor location.*
- 6. Use the LEFT and RIGHT toggle, cycle through the settings for the time mode. Each mode has a different number of settings available to adjust. The selected digit will flash.*
- 7. When the new settings have been entered, press EDIT to exit and press one of the time control buttons on the top of the clock to start the game. If you want to use the edited time control again, you can save it as your “coach’s favorite” by using the 4A mode pressing edit and move buttons simultaneously.*

Tournament Time Control settings:

1. 2A indicates a time control of Game in 25 minutes with a 5 second delay per move. You can edit the time control to fit the need of most of our club tournaments to Game/30 by editing the first time control and leaving the Delay as it is set.
2. 2B indicates a time control of Game in 60 minutes (1 hour) with a 5 second delay per move. You can edit the time control to fit the need of most of our club tournaments to Game/90 by editing the first time control and leaving the Delay as it is set.

3. 3C Time controls become more difficult to set, because they represent preset settings for longer tournaments that have at least three time controls each with its own prescribed number of move requirements: The first setting is the first time control (primary) which features 120 minutes for the first 40 moves with a 5 second delay per move. The second time control is preset to permit 60 minutes for the next 20 moves with a 5 second delay per move (This feature also adds the additional time from the first time control to the second so no time is lost if you have some left from the first time control. The third time control (tertiary) features 30 minutes with a 5 second delay and displays 00 in the move window, because the game has to be completed before the time runs out. It also adds the remaining time from the previous two controls to your over all remaining time.
4. 2D Time controls allow only two settings (Primary and Secondary) because the game must be completed in just two time controls each with its own delay. These two settings can be altered by using the same procedure as in the 3C settings.

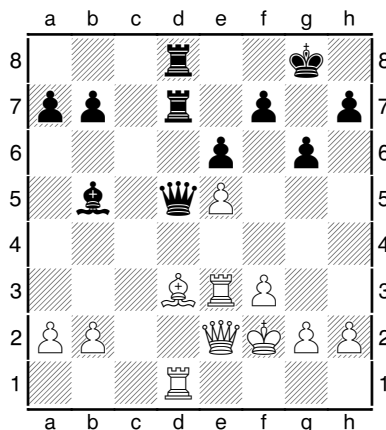
## Members' Games

*Please send me what you consider your best games, annotated or not, so that I might be able to showcase them. The following games represent contests that have been available at the time of this printing. Email them to me or give them to me personally, if you wish. Majority of analyses is done by Fritz 12, unless otherwise indicated.*

### **Bedy, Noel (1490) - Wilkinson, Stewart (1865) [D05] Colle System**

2013 PHCC July G/30 Mini-Swiss Port Huron (1), 25.07.2013

**1.d4 e6 2.Nf3 d5 3.e3 Nf6 4.Bd3 Bd6 5.Nbd2 Nbd7 6.0-0 0-0 7.Re1 c5 8.c3 Qb6 9.e4 cxd4 10.cxd4 dxe4 11.Nxe4 Nxe4 12.Rxe4 Nf6 13.Rh4 Be7 14.Bf4 Qd8 15.Be5 g6 16.Qd2 Re8 17.Bxf6 Bxf6 18.Re4 Bd7 19.Ne5 Bxe5 20.dxe5 Bc6 21.Ree1 Qd5 22.f3 Red8 23.Re3 Bb5 24.Rd1 Rd7 25.Qe2 Rad8 26.Kf2** Diagram



26...Qc5 27.Qc2, Qb6 looks like a very convincing continuation. **26...Bxd3 27.Rexd3 Qc5+ 28.Kf1 Rxd3 29.Rxd3 Rxd3 30.Qxd3 Qc1+ 31.Kf2 Qxb2+ 0-1**

### **Wingrove, William (1607) - Bruziewicz, Andrew (2252) [B00] King Pawn Opening**

2013 PHCC July G/30 Mini-Swiss Port Huron (1), 25.07.2013

1.e4 Nc6 2.Nf3 d6 3.d4 Nf6 4.Nc3 Bg4 5.Be2 e5 6.Be3 Be7 7.0-0 0-0 8.h3 Bxf3 9.Bxf3 Re8 10.Re1 exd4 11.Bxd4 Nxd4 12.Qxd4 Nd7 13.Nd5 Bg5 14.Rad1 Ne5 15.Be2 Ng6 16.Bf1 Re6 17.g3 Ne5 18.Bg2 Nc6 19.Qc3 Bf6 20.Nxf6+ Rxf6 21.e5 Re6 22.f4 Qe8 23.exd6 cxd6 24.Rxe6 Qxe6 25.Re1 Qd7 26.Qd2 g6 27.c4 Qc7 28.Kh2 Rd8 29.Re3 Ne7 30.Qe2 Kf8 31.b3 Black won on time 0-1

**Morabito,Matthew (1698) - Archer,Kraig (Unr) [B07] Pirc Defense**

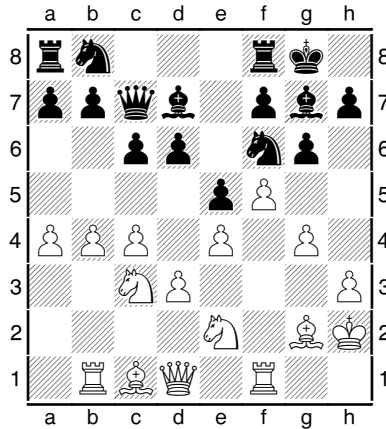
2013 PHCC July G/30 Mini-Swiss Port Huron (1), 25.07.2013

1.e4 d6 2.Nf3 Nf6 3.Bc4 e6 4.d4 Nc6 5.Nc3 a6 6.a3 b5 7.Ba2 d5 8.e5 Ne4 9.Be3 Be7 10.Qd3 Nxc3 11.Qxc3 Bd7 12.0-0 0-0 13.Qd3 h6 14.Bb1 Bg5 15.Nxg5 hxg5 16.c4 g6 17.cxb5 axb5 18.Qd2 f6 19.exf6 Qxf6 20.Bxg5 Qxd4 21.Bxg6 Be8 22.Bxe8 Raxe8 23.Rac1 Qxd2 24.Bxd2 Nd4 25.Rxc7 e5 26.Re1 e4 27.h4 Re5 28.Bc3 Ref5 29.Bxd4 Rxf2 30.Bxf2 1-0

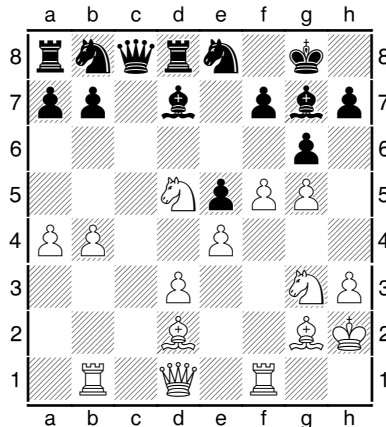
**Rutkofske,Lonnie (1873) - Jones,George Avery (1599) [A24] English Opening**

2013 PHCC July G/30 Mini-Swiss Port Huron (1), 25.07.2013

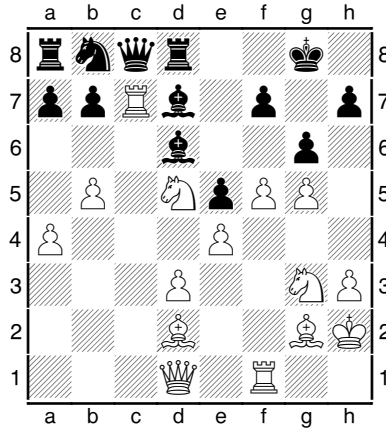
1.c4 c6 2.g3 Nf6 3.Bg2 g6 4.Nc3 Bg7 5.e4 d6 6.d3 0-0 7.Nge2 Nbd7 8.0-0 e5 9.h3 Qb6 10.Kh2 Nc5 11.Rb1 Be6 12.b4 Ncd7 13.f4 Nb8 14.a4 Qc7 15.f5 Bd7 16.g4



16...Qc8 17.Bd2 d5 18.Ng3 Rd8 19.g5 Ne8 20.cxd5 cxd5 21.Nxd5 Diagram



21...Bf8 22.b5 Bd6 23.Rc1 Nc7 24.Rxc7 Diagram



**24...Bxc7 25.Ne7+ Kh8 26.Nxc8 Rxc8 27.Qb3 Kg8 28.fxg6 hxg6 29.Qxf7+ Kh8 30.Qxg6 Re8 31.Rf7 1-0**

**Wilkinson, Stewart (1865) - Morabito, Matthew (1698) [C25] Closed Sicilian**

2013 PHCC July G/30 Mini-Swiss Port Huron (2), 25.07.2013

**1.e4 e5 2.Nc3 g6 3.f4 exf4 4.Nf3 Bg7 5.d4 d6 6.Bxf4 Nf6 7.Bc4 0-0 8.0-0 c6 9.Bb3 Bg4 10.Qd2 b5 11.Rae1 a5 12.a4 b4 13.Nd1 Nh5 14.c3 bxc3 15.bxc3 c5 16.h3 Bxf3 17.Rxf3 cxd4 18.cxd4 Qb6 19.Bd5 Qxd4+ 20.Qxd4 Bxd4+ 21.Kh1 Ra7 22.Bxd6 Rd8 23.Bh2 Kg7 24.g4 Nf6 25.Ba2 Nc6 26.Ref1 Rdd7 27.Bg1 Bxg1 28.Rxf6 Nb4 29.Rxf7+ Rxf7 30.Rxf7+ Rxf7 31.Bxf7 Kxf7 32.Kxg1 Nd3 33.Kg2 Ke6 34.Kf3 Ke5 35.Ke3 Nf4 36.Nf2 Ng2+ 37.Kf3 Ne1+ 38.Kg3 Kd4 39.g5 Ke5 40.Ng4+ Kxe4 41.Nf6+ Kf5 42.Nxh7 Nd3 43.h4 Nc5 44.Nf6 Nxa4 45.Nd5 Ke6 46.Nf4+ Kf7 47.Kg4 Nc5 48.Nd5 a4 49.h5 gxh5+ 50.Kxh5 Kg7 ½-½**

**Archer, Kraig (Unr)- Wingrove, William (1607) [D94] Grunfeld Defense**

2013 PHCC July G/90 Mini-Swiss Port Huron (2), 25.07.2013

**1.c4 Nf6 2.Nc3 g6 3.e3 Bg7 4.Nf3 d5 5.d4 0-0 6.Be2 c5 7.dxc5 Qa5 8.Qb3 Qxc5 9.h3 Nc6 10.a3 Na5 11.Qb5 Qxb5 12.cxb5 Bf5 13.Nd4 Bd7 14.a4 e5 15.b4 exd4 16.exd4 Nb3 17.Rb1 Nxd4 18.Be3 Nc2+ 19.Kd2 Nxe3 20.Kxe3 Rfe8+ 21.Kd2 d4 22.Nd1 Rac8 23.Rc1 Bh6+ 24.Ke1 Rxc1 25.Kf1 Nd5 26.g4 Nc3 0-1**

**Bruziewicz, Andrew (2252) - Rutkofske, Lonnie (1873) [D03] Torre Attack**

2013 PHCC July G/30 Mini-Swiss Port Huron (2), 25.07.2013

**1.Nc3 d5 2.d4 Nf6 3.Nf3 e6 4.Bg5 Be7 5.e3 c6 6.Bd3 Nbd7 7.0-0 h6 8.Bf4 a5 9.Re1 Bb4 10.a3 Bxc3 11.bxc3 Nb6 12.Qd2 Nc4 13.Bxc4 dxc4 14.e4 Nh7 15.Ne5 0-0 16.Nxc4 g5 17.Bd6 Re8 18.Bg3 f6 19.f4 b5 20.Ne3 e5 21.fxg5 hxg5 22.d5 Qb6 23.Bf2 c5 24.Reb1 Bd7 25.c4 b4 26.Qe2 Qd6 27.h4 Qf8 28.Rf1 Qh6 29.hxg5 Qxg5 30.Be1 Rab8 31.Rf3 Qg6 32.Bh4 Qxe4 33.Bxf6 Bg4 34.Qf2 Qd4 35.Nxg4 Qxa1+ 36.Kh2 Qc1 37.Qg3 Nxf6 38.Nxf6+ Kf7 39.Nxe8+ Kxe8 40.Qg8+ Kd7 41.Rf7+ Kd6 42.Qxb8# 1-0**

**Jones, George Avery (1599) - Bedy, Noel (1490) [D11] Slav Defense**

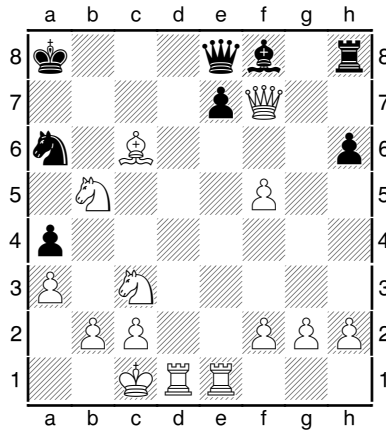
2913 PHCC July G/30 Mini-Swiss Port Huron (2), 25.07.2013

**1.d4 d5 2.Nf3 Nf6 3.g3 c6 4.Bg2 Bf5 5.0-0 e6 6.c4 dxc4 7.Bg5 Nbd7 8.Nc3 h6 9.Bf4 Nd5 10.Nxd5 exd5 11.Ne5 Be7 12.Re1 0-0 13.e4 dxe4 14.Bxe4 Bxe4 15.Rxe4 Nxe5 16.Bxe5 Bd6 17.Qe2 b5 18.Rd1 Bxe5 19.dxe5 Qe7 20.Rd6 Rac8 21.Qd2 Rfd8 22.Qd4 a5 23.Kf1 Qe8 24.Re1 Rxd6 25.exd6 Qd8 26.d7 1-0**

**Bedy,Noel (1490) - Archer,Kraig (Unr) [A80] Dutch Defense**

2013 PHCC July G/30 Mini-Swiss Port Huron (3), 25.07.2013

**1.d4 f5 2.Nc3 Nf6 3.Bg5 h6 4.Bxf6 gxf6 5.e4 d6 6.Qh5+ Kd7 7.exf5 c6 8.Bd3 Qb6 9.0-0-0 a5 10.Nge2 a4 11.a3 Qa5 12.Nf4 b5 13.d5 Bb7 14.dxc6+ Bxc6 15.Nfd5 Na6 16.Qf7 Rb8 17.Rhe1 Re8 18.Nxf6+ Kc7 19.Nxe8+ Kb7 20.Nxd6+ Ka8 21.Ndxb5 Qd8 22.Be4 Qe8?? 23.Bxc6??** Diagram



**23. Qe8+ wins the Queen!!! 23...Qxc6 24.Rd8+ Kb7 25.Rxf8 Kb6 26.Re6 Rxf8 27.Rxc6+ Kxc6 28.Qxf8 1-0**

**Wilkinson,Stewart (1865) - Bruziewicz,Andrew (2252) [B00] Nimzovitch Defense**

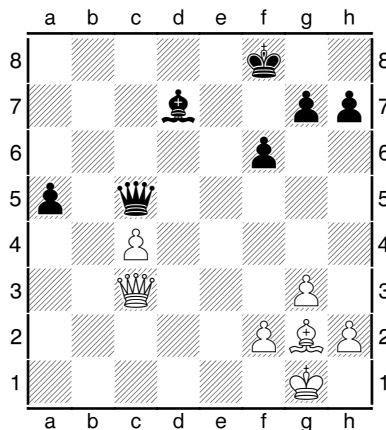
2013 PHCC July G/30 Mini-Swiss Port Huron (3), 25.07.2013

**1.e4 Nc6 2.d4 d6 3.Nf3 Nf6 4.Nc3** ½-½ A grandmaster draw...even at the PHCC?

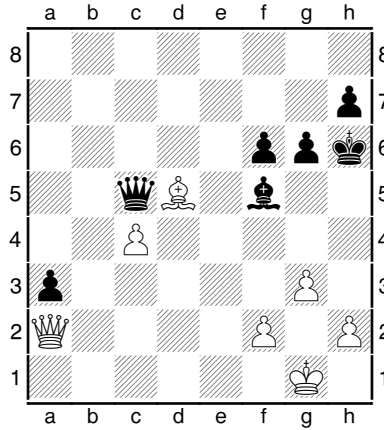
**Morabito,Matthew (1698) - Rutkofske,Lonnie (1873) [C00] French Defense**

2013 PHCC July G/30 Mini-Swiss Port Huron (3), 25.07.2013

**1.e4 e6 2.d3 d5 3.Nd2 Nf6 4.g3 Nc6 5.Bg2 Be7 6.Ne2 e5 7.exd5 Nxd5 8.Nc3 Nxc3 9.bxc3 0-0 10.0-0 Re8 11.Rb1 Na5 12.Rb5 c5 13.Nb3 Nxb3 14.Rxb3 Rb8 15.Be3 Qa5 16.Qb1 b5 17.c4 b4 18.a3 Bd7 19.axb4 Rxb4 20.Rxb4 cxb4 21.Bd2 Qc5 22.Qb2 a5 23.c3 Bf8 24.Re1 bxc3 25.Bxc3 f6 26.d4 exd4 27.Rxe8 dxc3 28.Rxf8+ Kxf8 29.Qxc3** Diagram



**29...a4 30.Qc2 g6 31.Bd5 a3 32.Qc3 Kg7 33.Qb3 Kh6 34.Qa2 Bf5** Diagram



35.Qd2+ Kg7 36.Qa2 Bh3 37.Qb3 Qe7 38.Qc3 Qe2 39.Qc1 Qb2 40.Qe1 a2  
 41.Qe7+ Kh6 42.Qf8+ Kh5 43.Bf3+ Bg4 44.Qc5+ Qe5 45.Bxg4+ Kxg4 46.Qc8+ f5  
 0-1

**Wingrove, William (1607) - Jones, George Avery(1490) [B13] Caro-Kann Exchange Variation**

2013 PHCC July G/30 Mini-Swiss Port Huron (3), 25.07.2013

1.e4 c6 2.d4 d5 3.exd5 cxd5 4.Bd3 Nf6 5.Nf3 Nc6 6.c3 g6 7.Bf4 Bg7 8.0-0 0-0  
 9.Nbd2 Bg4 10.h3 Bd7 11.Re1 Qc8 12.Ne5 Nh5 13.Bh2 a6 14.Qe2 e6 15.Ndf3 Na7  
 16.Nxd7 Qxd7 17.Ne5 Qc8 18.Qf3 Nc6 19.Re2 b5 20.a3 Na5 21.Rae1 Nc4 22.Nxc4  
 bxc4 23.Bb1 Rb8 24.Qe3 a5 25.g4 Nf6 26.f4 Rb7 27.f5 exf5 28.gxf5 Re8 29.Qg3  
 Rxe2 30.Rxe2 Ne4 31.Bxe4 dxe4 32.Qf4 Qxf5 33.Rxe4 h5 34.Re2 (time) 1-0

**Calendar of Events:** Note the change for the First Thursday of Each Month.

**First Thursday of Each Month** - Chess Clinics– 6:30 to 7:00 PM - \$7.50 per person. From 7:00 until 10:00, Players wishing to play games with longer time controls up to G/90 can choose to play match games if they so desire. Participants will be paired randomly and colors will be selected by lot. PHCC club ratings will be used. Players should turn their game scores into Lon, so he can adjust ratings appropriately and showcase the games in *Chess Chatter*.

**August 8<sup>th</sup> – PHCC August Double Round Robin Speed Tournament:** G/5 minutes: EF: \$5.00 A/\$2.50 Jr. PHCC membership required. Prizes based on entries.

**August 15<sup>th</sup>, 22<sup>nd</sup>, 29<sup>th</sup> – PHCC August USCF Rated Mini-Swiss-** One round per Thursday, G/90 w/5 sec. delay. EF: \$5.00 A/\$2.50 Jr. USCF and PHCC membership required. Prizes based on entries. One year USCF Membership for top junior, if more than one junior member participates. Please register with Lon by email by 4:00 PM on 8/15, or at the club by 6:30. Rounds begin promptly at 7:00 PM.

**Dues News:**

While dues are not required for anyone interested in playing at the club, they are required for those competing in tournament play. Annual Dues are \$20.00

for adults and \$10.00 for those under 19. Dues funds are used to offset miscellaneous expenses not funded by the Recreation Department.

## **Expiring Memberships as of August 2013:**

Noel Bedy, Brian Ledsworth

## **PHCC Rating Lists**

The following list represents only current members of the Port Huron Chess Club. Current USCF ratings were used for members that had them, in order to establish the initial club rating list. The USCF rating format is used as the basis for calculating our club rating list. Members that had no USCF ratings are given a provisional rating based on their performances against regular club members who had USCF ratings. Club rated events will use these ratings for pairing purposes.

### **PHCC Rating List as of 8/5/13**

<u>Name</u>	<u>Rating</u>
Bruziewicz, Andy	2118
Gregg, Alan	1956
Wilkinson, Stew	1883
Rutkofske, Lon	1836
Morabito, Matt	1780
Jones, G. Avery	1684
Wingrove, Bill	1680
Fiedler, Bob	1646
Hartwig, Nathan	1644
Bedy, Noel	1636
Beneker, Gerrit	1545
Kulkarni, Atul	1513
Scholfield, Chris	1503
Boucher, Dave	1463
Mariani, Gino	1321
Rob Brown	1300
Archer, Kraig	1200
Carey, Jay	1000
Allen, Nathan	984
Nowiski, Adam	919
Kulkarni, Atharva	867

### **USCF Ratings as of 8/5/13**

<u>Name</u>	<u>Rating</u>
Bruziewicz, Andy	2121
Gregg, Alan	2000
Wilkinson, Stew	1849
Rutkofske, Lon	1813
Morabito, Matt	1806
Fiedler, Robert	1713
Wingrove, Bill	1687
Hartwig, Nathan	1623
Jones, G. Avery	1608
Bedy, Noel	1557
Boucher, Dave	1335
Mariani, Gino	939P

### **PHCC Speed Rating List as of 8/5/13**

<u>Name</u>	<u>Rating</u>
Bruziewicz, Andy	2248
Gregg, Alan	1962
Rutkofske, Lon	1880
Wilkinson, Stew	1871
Hartwig, Nathan	1702
Morabito, Matt	1697
Wingrove, Bill	1623
Fiedler, Robert	1608
Jones, G. Avery	1590
Scholfield, Chris	1552
Beneker, Gerrit	1550
Kulkarni, Atul	1513
Bedy, Noel	1475
Nowiski, Adam	1363
Mariani, Gino	1333
Carey, Jay	1000
Allen, Nathan	984
Kulkarni, Atharva	867
Archer, Kraig	750

# GENEROUS SCHOLARSHIPS FOR STUDENTS WITH FINANCIAL NEED

NEW!

## YOUNG SCHOLARS PROGRAM

The Jack Kent Cooke Foundation Young Scholars Program offers the most personalized, generous scholarship and educational support program to exceptionally promising students from families across the nation who have financial need. Young Scholars receive comprehensive educational advising and financial support from the 8th grade through high school to pursue their unique academic and talent goals.

### THE FOUNDATION WILL SELECT UP TO 60 YOUNG SCHOLARS BASED ON:

- High academic ability and achievement
- Financial need
- Drive and persistence
- Leadership
- Desire to engage in and contribute to the world

### AS MINIMUM CRITERIA, STUDENTS MUST:

- Enter the 8th grade in the fall 2014
- Have earned grades of all or mostly A's since the beginning of 6th grade



## COLLEGE SCHOLARSHIP PROGRAM

The Jack Kent Cooke Foundation College Scholarship Program is a new undergraduate scholarship program available to high-performing high school seniors with financial need who seek to attend the nation's best 4-year colleges and universities. College Scholars may receive up to \$30,000 per year, college planning support, ongoing advising, and the opportunity to network with the larger JKCF Scholar community.

### THE FOUNDATION WILL SELECT UP TO 40 COLLEGE SCHOLARS BASED ON:

- Exceptional academic ability and achievement
- Unmet financial need
- Demonstration of persistence, leadership, and a desire to help others

### AS MINIMUM CRITERIA, STUDENTS MUST:

- Earn a cumulative unweighted GPA of 3.5 or above
- Have combined standardized test scores in the top 15%
- Plan to graduate from a U.S. high school in spring 2014



LEARN MORE ABOUT OUR SCHOLARSHIP PROGRAMS AT [WWW.JKCF.ORG/SCHOLARSHIPS](http://WWW.JKCF.ORG/SCHOLARSHIPS), OR CALL 855-509-5253.