



# Chess Chatter

Newsletter of the Port Huron Chess Club

---

**Editor: Lon Rutkofske    February 2014    Vol.33    Number 2**

---

The **Port Huron Chess Club** meets Thursdays, except holidays, from 6:30-10:00 PM, at Palmer Park Recreation Center, 2829 Armour Street, (NE corner of Garfield Street and Gratiot Ave...1 mile North of the Blue Water Bridge) Port Huron, Michigan. Everyone is welcome. All equipment provided. Website: <http://porthuronchessclub.volasite.com>

---

## **PHASD/Phil Willard Memorial Tournament on tap for March 22, 2014**

Again PHCC members are asked to be on hand to help at this year's Phil Willard Memorial Chess Tournament. Please see the tournament flyer on the final page of CC to get complete details. Please let me know if you will be able to help, so I can notify **Evone Rodrigues** so she can plan appropriately. See the flyer on the final page of this issue.

## **Exciting changes come to the PHCC website**

If you have not visited the PHCC website lately (<http://porthuronchessclub.volasite.com>), you are probably unaware of the improvements made by webmaster, Alan Gregg. Alan downloaded games from **Michigan Chess Magazine**, some 34,000 games played by Michigan players from 1963 through 2003 which can give local players access to a database to aid them as they approach competition in state tournaments. With assistance from PHCC newcomer, Tony West, our resident "web-ster" has included an application that permits the viewer to actually play through games online. If you go to the 2014 PHCC Championships page, make sure you click on the round number to review that round's games.

For his part Lon has made it a priority in getting recent and relevant information to club members by keeping news and updates as current as possible.

## **Weather continues to plague Championship play**

Well, Michigan being Michigan, mother nature has managed to throw her stormy "monkey wrench" into the best laid plans of tournament director, Lon Rutkofske's attempts to keep pending rounds on track. Twice this cycle, record snow falls have stymied efforts to maintain some semblance of continuity. Hopefully, spring is on neigh and we may be able to complete this year's tournament on target for its April finish.

Results thusfar have Alan, Matt and Tony each with 2.5 points followed by Avery Jones with 2 after thumping Lon, followed by Stew who has 1.5 after the

3<sup>rd</sup> round. With 4 rounds remaining it is still a horse race and surprising things can happen and usually do! Results are listed below. See the Members' Games section for scores:

### 2014 PHCC Championships - Standings as of 2-19-14

#	Name	Rtng	Rd 1	Rd 2	Rd 3	Tot
1	Alan Gregg	1951	W7	W6	D2	2.5
2	Tony West	1898	X4	W5	D1	2.5
3	Matthew Morabito	1780	W10	W7	D5	2.5
4	G. Avery Jones	1684	F2	W10	W6	2.0
5	Stewart Wilkinson	1879	W8	L2	D3	1.5
6	Lonnie Rutkofske	1836	W9	L1	L4	1.0
7	William Wingrove	1695	L1	L3	W9	1.0
8	Noel Bedy	1621	L5	L9	W10	1.0
9	David Boucher	1463	L6	W8	L7	1.0
10	Adam Nowiski	919	L3	L4	L8	0.0

## Members' Games

*Please send me what you consider your best games, annotated or not, so that I might be able to showcase them. The following games represent contests that have been available at the time of this printing. Email them to me or give them to me personally, if you wish. Majority of analyses is done by Fritz 12, unless otherwise indicated.*

### **Rutkofske, Lonnie (1836) - Gregg, Alan (1951) [A11] English Opening**

2014 PHCC Championships Port Huron (2), 23.01.2014

1.c4 Nf6 2.g3 c6 3.Bg2 d5 4.Nf3 Nbd7 5.cxd5 cxd5 6.d4 e6 7.0-0 Bd6 8.Nc3 0-0 9.Qd3 a6 10.e4 dxe4 11.Nxe4 Nxe4 12.Qxe4 Nf6 13.Qc2 h6 14.Ne5 Qc7 15.Qe2 Bxe5 16.dxe5 Nd5 17.Qg4 Qxe5 18.Qd1 Bd7 19.Re1 Qf6 20.Qb3 Bc6 21.Bd2 Rac8 22.Rac1 Rfd8 23.Ba5 Re8 24.Rxc6 bxc6 25.Qc2 Qg5 26.Bd2 Qf6 27.Ba5 c5 28.Bd2 Nb4 29.Qb1 Qd4 30.Bc3 Qd3 31.Be4 Qxb1 32.Bxb1 Nd5 33.Ba5 c4 34.f4 c3 35.bxc3 Nxc3 36.Bd3 Nxa2 37.Bxa6 Rc1 0-1

### **West, Tony (1898) - Wilkinson, Stewart (1879) [A84] Dutch Defense**

2014 PHCC Championships Port Huron (2), 23.01.2014

1.d4 e6 2.c4 f5 3.Nf3 Nf6 4.g3 Bb4+ 5.Bd2 Bxd2+ 6.Nbxd2 0-0 7.Bg2 d6 8.Qc2 Nc6 9.0-0 e5 10.dxe5 dxe5 11.Rad1 Qe7 12.e3 e4 13.Ne1 Nb4 14.Qb3 a5 15.a3 Nc6 16.Nb1 a4 17.Qc2 Be6 18.Qe2 Ne5 19.Nd2 Rad8 20.f4 Nxc4 21.Nxc4 Rxd1 22.Qxd1 Bxc4 23.Qxa4 Bxf1 24.Bxf1 Qc5 25.Nc2 h6 26.Nd4 Qb6 27.b4 Ng4 28.h3 Nxe3 29.Qb3+ Kh8 30.Qxe3 g6 31.Kf2 Rd8 32.Nb3 Qd6 33.Be2 b6 34.Qc3+ Kh7 35.Ke3 h5 36.Qe5 Qxe5 37.fxe5 Kg7 38.Kf4 Ra8 39.g4 Rf8 40.gxh5 g5+ 41.Kxg5 f4 42.Nd4 f3 43.Bf1 Kh8 44.Kg4 Rg8+ 45.Kf4 Rg1 46.e6 Rg7 47.Nf5 Rg8 48.e7 Re8 49.Kxe4 c6 50.Kxf3 Kh7 51.Kf4 Resigns

### **Wingrove, William (1695) - Morabito, Matthew (1780) [B22] Sicilian Defense**

2014 PHCC Championships Port Huron (2), 23.01.2014

1.e4 c5 2.c3 d6 3.d4 cxd4 4.cxd4 Nf6 5.Nc3 e6 6.Nf3 Be7 7.Be2 0-0 8.0-0 a6 9.h3 b5 10.a3 Bb7 11.Bd3 Nc6 12.Qc2 e5 13.d5 Nb8 14.Be3 Nbd7 15.b4 Rc8 16.Qd2 Nb6 17.Rac1 Nc4 18.Bxc4 Rxc4 19.Qd3 Qa8 20.Nd2 Rcc8 21.f4 Nd7 22.f5 Bd8 23.g4 Nb6 24.g5 Nc4 25.Nxc4 Rxc4 26.f6 g6 27.Qe2 Qc8 28.Bd2 Qxh3 29.Rf2 Bb6 30.Qf1 Qg3+ 31.Qg2 Bxf2+ 32.Kf1 Qxg2+ 33.Kxg2 Bd4 0-1

### **Bedy, Noel (1621) - Boucher, David (1463) [D05] Colle System**

2014 PHCC Championships St. Clair (2), 29.01.2014

1.d4 e6 2.c3 d5 3.e3 Nf6 4.Nd2 c5 5.Bd3 Bd6 6.Ngf3 Nc6 7.0-0 0-0 8.dxc5 Bxc5 9.e4 Qc7 10.exd5 Nxd5 11.Nc4 Nf6 12.Qe2 b5 13.Ncd2 a6 14.Ne4 Be7 15.Nxf6+ Bxf6 16.Qe4 g6 17.Bg5 Bg7 18.Rfe1 Bb7 19.Qh4 Ne5 20.Nxe5 Bxe5 21.Re3 Bg7 22.Rae1 f6 23.Rh3 Bh8 24.Bh6 Rf7 25.Bxg6 hxg6 26.Bf4 Rh7 27.Bxc7 Rxh4 28.Rxh4 Kf7 29.Rd1 Re8 30.Rd7+ Kg8 31.Rhh7 Bc8 32.Rd8 Rxd8 33.Bxd8 Kxh7 34.Kf1 e5 35.Ke2 e4 36.Ke3 f5 37.f3 Bb7 38.fxe4 Bxe4 39.h4 Bg7 40.g4 Be5 41.gxf5 gxf5 42.Ba5 Bg3 43.h5 Kh6 44.b3 Kxh5 45.c4 Bc6 46.cxb5 axb5 47.a4 f4+ 48.Kd3 f3 49.Bb6 bxa4 50.bxa4 Bxa4 51.Bg1 Kg4 52.Ke3 Bc6 0-1

**Nowiski,Adam (919) - Jones,G. Avery (1684) [B12] Caro-Kann,AdvanceVar.**

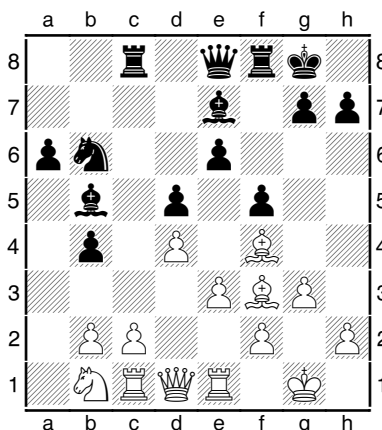
2014 PHCC Championships Port Huron (2), 30.01.2014

1.e4 c6 2.d4 d5 3.e5 Bf5 4.Nf3 Bg4 5.h3 Bh5 6.Be2 e6 7.c3 Qc7 8.0-0 c5 9.Be3 Nc6 10.Na3 a6 11.Qd2 Nge7 12.b4 Nf5 13.Bf4 Bxf3 14.Bxf3 cxb4 15.cxb4 Bxb4 16.Qd3 Nfxd4 17.Nc2 Nxf3+ 18.Qxf3 Bc5 19.Qc3 b6 20.Ne1 ?? 20...Bd4 21.Qc1 Bxa1 22.Qxa1 0-0 23.Qc3 Rfc8 24.Qg3 Nd4 25.Kh1 Ne2 26.Qg4 Nxf4 27.Qxf4 Qc4 28.Qxc4 Rxc4 29.Nd3 Rac8 30.Rb1 b5 31.Rd1 Rd4 32.f4 Rc3 0-1

**Jones,G. Avery (1684) - Rutkofske,Lonnie (1836) [A80] Dutch Defense**

2014 PHCC Championships Port Huron (3), 14.02.2014 [*Lonnie Rutkofske*]

1.d4 f5 2.Nf3 Nf6 3.Nc3 e6 4.g3 Be7 5.Bg2 0-0 6.0-0 d5 7.Ne5 a6 8.Bf4 Nbd7 9.a3 c5 10.e3 Qe8 11.Bf3 Nxe5 12.Bxe5 Bd7 13.Re1 Rc8 14.Qe2 b5 15.Rac1 b4 16.axb4 cxb4 17.Nb1 Bb5 18.Qd1 Nd7 19.Bf4 Nb6?? Diagram



[Best was g5! forcing the exchange, and doubling white's pawns, creating a target for future attack!] **20.b3 Qd7 21.Be2 a5 22.Be5 a4 23.Bxb5 Qxb5 24.bxa4 Qxa4?** [Na4 is far better because it keeps the Black queen on a safer square and permits eventual targets on b2 and c3, as well as making counter play for White difficult. It also gives Black time to double rooks and continue the q-side development, while the B of e5 languishes without good squares.] **25.Nd2 Rc6 26.Nb3 Rc3 27.Ra1 Qc6 28.Ra7 Nc8 29.Rc7 Qb6 30.Nc5 Re8 31.Na4 Qxc7 32.Bxc7 Rxc7 33.Qd3 Rc4 34.Nc5** [Here the simple 34...Bc5 35 dc5, Rc5 36.Qd4 Rb5 37.Rb1, Nd6 38.Rb4 Rb4 39.Qb4, Nc4 should hold at least a draw.] **34...Bf8 35.Ra1 Nd6 36.Ra6 Kf7 37.Qe2 g6 38.Nd7 Ke7 39.Ne5 Rc7 40.Nc6+ Kf6 41.Nxb4 Rb8 42.Qd2 Ne4 43.Nxd5+ Kg7 44.Qa5 Rb1+??** [A massive blunder here as time was winding down. Correct is the winning 44...Rc2!! with mating threats. If 45. Re6, Rb1 check followed by 46.Kg2, Rf2+ 47.Kh3,

Ng5+48.Kh4, Rh2 49.Kg5, h6 mate!] **45.Kg2 Rcb7 46.Rxe6 R1b5 47.Qd8 Rf7 48.Ne7 Kh8** [Black lost on time after a mad time scramble.] **1-0**

**Gregg,Alan (1951) - West,Tony (1898) [A10] English Opening**

2014 PHCC Championships Port Huron (3), 13.02.2014

**1.Nf3 e6 2.c4 f5 3.Nc3 Nf6 4.d3 d5 5.e3 Bd6 6.Be2 c6 7.b3 e5 8.0-0 0-0 9.cxd5 Nxd5 10.Bb2 Qe7 11.Nd2 Be6 12.Nc4 Bc7 13.d4 exd4 14.Qxd4 Nb4 15.Qd1 b5 16.Nd2 Rd8 17.Qc1 Bxh2+ 18.Kxh2 Qd6+ 19.Kg1 Qxd2 20.Rd1 Qxc1 21.Raxc1 Nd7 22.a3 Na6 23.Rd6** [if 23...Bb3 24. Nb5, and all of White's pieces are poised to destroy the Black position. Blacks B is threatened and his Q-side is in peril are there any good moves? - LWR ]  $\frac{1}{2}$ - $\frac{1}{2}$

**Morabito,Matthew (1780) - Wilkinson,Stewart (1879) [C00] French Defense**

2014 PHCC Championships Port Huron (3), 13.02.2014

**1.e4 e6 2.d3 d5 3.Nd2 c5 4.Ngf3 Nc6 5.Be2 Bd6 6.0-0 Nge7 7.Re1 0-0 8.exd5 Nxd5 9.Ne4 Be7 10.Bd2 b6 11.a4 Bb7 12.Bg5 h6 13.Bd2 Qc7 14.Qc1 f5 15.Nc3 Nxc3 16.Bxc3 Bf6 17.Qe3 Rae8 18.d4 cxd4 19.Nxd4 Nxd4 20.Bxd4 e5 21.Bc3 f4 22.Qd3 Rc8 23.Bg4 e4 24.Rxe4 Bxe4 25.Qxe4 Bxc3 26.Bxc8 Rxc8 27.bxc3 Qxc3 28.Qe6+ Kh8 29.Rc1 f3 30.gxf3 Rf8 31.Qe3 Qxe3 32.fxe3 Rxf3 33.Re1 g5 34.e4 Kg7 35.Kg2 Rc3 36.Re2 Kf6 37.e5+ Ke6 38.Kf2 Rc5 39.Kf3 h5 40.h3 Rxe5 41.Rd2 Rd5 42.Re2+ Kd6 43.Re8 Rf5+ 44.Kg3 Kc5 45.Re7 a5 46.c3 Kc4 47.Re6 b5 48.Rc6+ Kb3 49.axb5 Rxb5 50.c4 Re5 51.c5 Kb4 52.Rh6 h4+ 53.Kg4 Rxc5 54.Rb6+ Rb5 55.Rc6 Kb3 56.Rc1 Kb2 57.Re1 a4 58.Re2+ Kb3 59.Re3+ Ka2 60.Re4 a3 61.Re2+ Rb2** (*What follows is Lon's attempt to reconstruct the concluding moves from nearly undecipherable scores sheets submitted by the obviously nervous contestants in order to make some sense out of the game's startling outcome!*) **62.Re5 Rg2+ 63.Kh5 Rg3 64.Rb5 Ka1 65.Ra5 a2 66.Re5 Rg2 67.Ra5 Kb1 68.Rb5+ Rb2 69.Rxg5 a1Q 70.Rg1+ Ka2 71.Rxa1+ Kxa1 72.Kxh4 Rg2 73.Kh5 Kb2 74.h4 Kc3 75.Kh6 Kd4 76.h5 Ke5 77.Kh7 Kf6 78.h6 Ke7 79.Kh8**  $\frac{1}{2}$ - $\frac{1}{2}$

**Boucher,David (1463) - Wingrove,William (1695) [B22] Sicilian Defense**

2014 PHCC Championships St. Clair (3), 16.02.2014

**1.e4 c5 2.d4 cxd4 3.c3 d5 4.exd5 Qxd5 5.Nf3 Nc6 6.c4 Qd6 7.Bd3 Nf6 8.0-0 Bg4 9.b3 e6 10.Ba3 Nb4 11.Nbd2 Qb6 12.Ne4 Be7 13.Bb2 Nc6 14.Re1 0-0 15.c5 Qc7 16.Bb5 Rad8 17.Nxf6+ Bxf6 18.Re4 Bf5 19.Bxc6 bxc6 20.Re2 e5 21.h3 Rfe8 22.g4 Bc8 23.g5 Be7 24.Rxe5 Bxh3 25.Nxd4 Qxe5** **0-1**

**Bedy,Noel (1621) - Nowiski,Adam (919) [D02] Queen's Pawn Game**

2014 PHCC Championships Saint Clair (3), 18.02.2014

**1.d4 d5 2.Nf3 e6 3.c3 c6 4.e3 Nf6 5.Bd3 Nbd7 6.Nbd2 c5 7.0-0 Bd6 8.Re1 0-0 9.e4 cxd4 10.cxd4 Bb4 11.e5 Ne8 12.a3 Ba5 13.b4 Bc7 14.Nf1 Bb8 15.Ng3 g6 16.Qd2 Ng7 17.Qh6 Re8 18.Ng5 Nf8 19.Nf3 b6 20.Bg5 Nf5 21.Nxf5 exf5 22.Bxd8 Rxd8 23.Ng5 a5 24.Qh4 Re8 25.Bb5 Bd7 26.Bxd7 Nxd7 27.Qxh7+ Kf8 28.Qxf7#** **1-0**

**Member Showcase:**

Below is a very recent game from the 2013 MI Correspondence Championship. The game is also on my blog, which Alan has so gracefully added to the PHCC website, but I have included here as well in case it is easier to follow this way.... this game might interest your readers as it is rare for a patzer to get a solid draw against a master, especially in corr. chess.- TW

**Fischvogt, Eric (2340) - West, Tony (1898) [A82] Dutch, Staunton Gambit**

2013 MI Correspondence Championships (Finals), 18.01.2014

**1. d4 f5 2. e4 fxe4 3. Nc3 Nf6 4. g4 h6 5. f3 d5 6. h3 Nc6** (What a mess! Good thing that I knew this is all book. A big assist to the International Chess School's (ICS) openings module.) **7. Bf4** (Book is 7.Be3 when I then play 7...e5 with a slight advantage for Black. I only found 1 game with Bf4 here, so I followed it.) **e6** (Fritz seems to think I should sack the e- pawn with 7...e5) **8. Qd2 Bd6 9. Bxd6 Qxd6 10. O-O-O exf3 11. Nxf3 Ne4** (White is still following the only game in Chessbase in this line. I wanted to break off here because I didn't like exchanging the knight on e4. Only problem was I couldn't find a good response to him playing Nb5 on the next move.) **12. Nxe4 dxe4 13. Nh4 g5 14. Ng6** (Finally, White deviates from the game we were following. Strangely enough, this move almost forces a draw here. Almost all of Black's moves from here on out are forced and easy to see. 14.Ng2 was played prior, expecting to jump into e3 quickly.) **Rg8 15. Ne5 Nxe5 16. dxe5 Qxd2+** (Taking the pawn is too risky with my King in the middle of the board.) **17. Kxd2 Bd7** (While looking at this position, I noticed one interesting thing - if all of the pieces were traded off, White could not win because he has no penetration squares (f5, e5, d5 d6). My plan was easy to find.) **18. Ke3 Bc6 19. Bg2 Rf8 20. Rhf1** (If White takes the pawn first, I might actually win. Ke7 21. Bxe4 Bxe4 22. Kxe4 Rxf1 23. Rxf1 Rf8 24. Rxf8 Forced, or I get the 2nd rank and serious winning chances.) **Kxf8 25. Kd4 Ke7** (This ending is drawn unless one side makes a serious mistake. I had to calculate every possibility White had. Sounds tough, but really White had at any moment only 2-4 moves he could play.) **26. a4 b6** (This might not be the only drawing move, but once I found it, I had no more worries. I think 26...Kd7 gives black more chances to go wrong.) **27. Kc4** [27. b4 Kd7 28. Kc4 (28. b5 Ke7 29. c4 Kd7 30. c5 Ke7 31. cxb6 cxb6 32. Kc4 Kd7 33. Kb4 Kc7 34. a5 Kd7=) 28... Kc6 29. a5 Kb7 30. Kd4 (30. Kb5 c6+ (30... a6+ 31. Kc4 Kc6 (31... bxa5 32. bxa5 Ka8 33. Kc5 Kb7+-) 32. c3 Kb7 33. axb6 Kxb6 34. Kb3 Kb5 35. c4+ Kb6 36. Ka4 Kb7 37. Ka5 Ka7 38. b5 axb5 39. cxb5 (39. Kxb5 Kb7 40. Kc5 Kc8 41. Kc6 Kd8 42. c5 Kc8 43. Kb5 Kb7 44. c6+ Kb8 45. Kc5 Ka7 46. Kb5 Kb8 47. Ka5 Ka7 48. Kb5 Kb8) 39... Kb7 40. Ka4 Ka8 41. Kb4 Kb7 42. Kc4 Kb8) 31. Kc4 bxa5 32. bxa5 Kc7 33. Kc5 Kd7 34. c4 Kc7 35. a6 Kd7 36. Kd4 Kd8 (36... Kc7 37. Kc5 Kd7 38. Kb4 Kc7 39. Kc5) 37. Kc5 Kc7; 30. axb6 Kxb6 31. Kd4 Kb5 32. c3 Kb6 33. c4 Kc6 34. b5+ Kb6 35. Kc3 (35. Kd3 c6 (35... Kc5 36. Kc3 Kb6 37. Kb4; 35... Kb7 36. Kc3 Kb8 37. Kb4 Kb7 38. Kc5) 36. bxc6 Kxc6 37. Kc3 a5 38. Kb3 Kc5 39. Kc3 a4) 35... c6 36. bxc6 Kxc6 37. Kb4 a5+ 38. Kb3 (38. Kxa5 Kc5 39. Ka6 Kxc4 40. Kb6) 38... Kc5 39. Kc3 a4; 30. c3 Kc6 31. Kd4 bxa5 32. bxa5 Kb5 33. c4+ Kb4 34. c5 (34. a6 c5+) 34... c6 35. a6 Kb5) 30... bxa5 31. bxa5 Ka6 32. Kc5 Kxa5 33. Kc6 Kb4 34. Kd7 a5 35. Kxe6 a4 36. Kf5 a3 37. e6 a2 38. e7 a1=Q 39. e8=Q Qf1+ 40. Kg6 Qxh3; 27. a5 c5+ 28. Kc4 Kd7 29. axb6 axb6 30. Kb5 Kc7 31. Ka6 (31. c3 Kb7) 31... Kc6 32. c4 Kc7 33. Kb5 (33. Ka7 Kc6 34. b3 Kc7 35. Ka8 Kc8) 33... Kb7 34. b3 Kc7 35. b4 cxb4 36. Kxb4 Kc6; 27. c4 c5+ 28. Kc3 a5=] **27... a6!** (Necessary after b6 to keep the White king out.) **28. Kb4** [28. b4 Kd7 29. a5 (29. b5 a5 30. Kd4 Ke7 31. c4 Ke8 32. c5 Kd7 33. cxb6 cxb6=; 29. c3 Kc6 30. b5+ Kb7 31. bxa6+ Kxa6 32. Kb4 c5+ 33. Kc4 Ka5 34. Kb3 b5 35. axb5 Kxb5 36. c4+ Kb6 37. Ka3 Ka7=) 29... Kc6 30. c3 Kb7 31. b5 bxa5 32. bxa6+ Kxa6 33. Kc5 a4 34. Kb4 Kb6 35. Kxa4 Kc5+; 28. a5 Kd7 29. b4 (29. axb6 cxb6 30. c3 (30. Kd4 Kc6 31. c4 (31. Kc4 Kd7 32. b4 Kc6 33. c3 Kc7 34. Kd4 Kc6 35. c4 Kc7 36. c5? b5 37. Ke4 Kc6 38. Kd4 Kc7 39. Ke4= (39. c6?? Kxc6 40. Ke4 Kb6 41. Kd4 a5 42. bxa5+ Kxa5 43. Kc5 b4 44. Kc4 Ka4+) ) 31... a5 32. b3 Kd7 33. c5 Kc6 34. cxb6 Kxb6 35. Kc4 Kc6 36. Kd4 Kb5+) 30... Kc6 31. b3 (31. b4 Kc7 32. Kd4 Kc6 33. c4 Kc7 34. b5 a5 35. Kc3=) 31... Kc7 32. b4 Kc6 33. Kd4 Kb5 34. Kd3 a5 35. bxa5 bxa5+) 29... Kc6 30. c3 Kb7 31. Kd4 Kc6 32. c4 Kb7 (32... b5?? 33. Kc3+- (33. cxb5+ Kxb5 34. Kc3 c5 35. bxc5 Kxc5+) ) 33. Kc3 (33. c5 b5=) 33... Kc6 34. axb6 Kxb6 35. Kd4 Kc6 36. Ke4 Kb6=] **28... Kd7 29. a5** [29. b3 Kc6 30. Kc4 a5 31. c3 b5+ 32. Kd4 (32. axb5+ Kb6 33. Kd3 (33. b4 a4) 33... Kxb5) 32... Kb6 33. axb5

Kxb5 34. c4+ Kb4+ ] **29... Kc6 30. axb6** [30. c3 Kd5 ;30. c4 Kb7 31. b3 Kc6 32. Kc3 bxa5 33. Kd4 Kb6 34. c5+ Kb5+ ] **30... Kxb6 31. c3** [31. c4 c5+ 32. Ka4 (32. Kb3 Ka5 33. Kc3 Ka4 34. b3+ Ka3 (34... Ka5 35. b4+ cxb4+ 36. Kb3 ) 35. b4 cxb4+ 36. Kc2 Ka2+ ) 32... a5 33. b3 (33. Ka3 Ka6 34. Kb3 Kb6 35. Kc3 a4 36. b4 axb3 37. Kxb3 Ka7 38. Ka3 Kb7 39. Ka4 Ka6= ) 33... Ka6 ;31. Ka4 a5 (31... c5 32. b4 cxb4 33. Kxb4 a5+ 34. Ka4 ) 32. b4 axb4 33. Kxb4 c5+ 34. Kc4 Kc6 35. c3 Kb6 36. Kb3 Kb5 37. Ka3 (37. c4+ Kb6 ) 37... Kc4 ;31. b3 c5+ 32. Kc4 a5 33. c3 Kc6 34. b4 axb4 35. cxb4 cxb4 36. Kxb4 Kd5 ;31. Kc4 Kc6 32. b4 Kb6 33. Kb3 (33. Kd4 Kb5 34. c3 c6 35. Kd3 c5 ) 33... c5 34. c3 Kb5 35. c4+ Kb6 36. bxc5+ Kxc5 37. Kc3 a5 ] **31... c5+ 32. Ka4** [32. Kb3 Kc6 33. Kc4 (33. Ka4 Kd5 (33... Kb6 34. b4 c4 35. Ka3 Kb5 36. Kb2 Ka4 (36... Kc6 37. Ka3 Kd5 38. Ka4 Kxe5 39. Ka5 Kd5 (39... Kd6 40. Kxa6 e5 41. b5 e4 42. b6 e3 43. b7 e2 ) 40. Kxa6 e5 41. b5 e4 42. b6 e3 43. b7 e2 44. b8=Q e1=Q 45. Qb5+ ) 37. Ka2 Kb5 38. Ka3 Kc6 39. Ka4 Kb6 ) 34. Ka5 Kxe5 35. Kxa6 Kd5 (35... Kd6 36. b4 cxb4 37. cxb4 e5 (37... Kc7 38. Ka7 Kc6 39. Ka6 e5 40. b5+ Kc5 41. b6 e4 42. b7 e3 ) 38. b5 e4 39. b6 e3 40. b7 e2 ) 36. b4 e5 37. b5 e4 38. b6 e3 39. b7 e2 40. b8=Q e1=Q 41. Qb3+ ;33. c4 Kb6 34. Ka4 a5 35. b3 Ka6 ) 33... a5 34. b3 Kb6 35. b4 a4 36. bxc5+ Kc6 37. Kb4 a3 38. Kxa3 Kxc5 39. Kb3 Kd5 40. c4+ Kxe5 41. c5 Kd5 42. Kb4 Kc6 43. Kc4 e5 44. Kd3 Kxc5 45. Ke4 Kd6 ;32. Kc4 Kc6 33. b3 a5 34. Kd3 Kd5 ;32. Ka3 Kb5 33. Kb3 c4+ 34. Ka3 Kc5 35. Ka4 Kd5 36. Kb4 (36. Ka5 Kxe5 37. Kxa6 Kd5 ) 36... Kxe5 (36... a5+ 37. Kxa5 Kxe5 38. Kb4 Kd5 39. b3 cxb3 40. c4+ Kd4 41. Kxb3 e5 42. Kb4 e4 43. c5 e3 44. c6 e2 45. c7 e1=Q+ ) 37. Kxc4 Kd6 ] **32... a5 33. c4 Draw 1/2-1/2**

## Calendar of Events: Note the change for the First Thursday of Each Month.

**First Thursday of Each Month** - Chess Clinics– 6:30 to 7:00 PM - \$7.50 per person. From 7:00 until 10:00, Players wishing to play games with longer time controls up to G/90 can choose to play match games if they so desire. Participants will be paired randomly and colors will be selected by lot. PHCC club ratings will be used. Players should turn their game scores into Lon, so he can adjust ratings appropriately and showcase the games in *Chess Chatter*.

**2014 PHCC Championships - January 16 thru April 6<sup>th</sup> 2014.** Tournament games will be held Thursdays during the tournament schedule Rounds: (January 16<sup>th</sup>, 23<sup>rd</sup>, February 6<sup>th</sup>, 13<sup>th</sup>, 27<sup>th</sup>; March 6<sup>th</sup>, 20<sup>th</sup> with make-up dates on January 30<sup>th</sup>, February 20<sup>th</sup> and March 13<sup>th</sup> with Awards night on April 6<sup>th</sup>.), but everyone is still welcome to come to the club to play during this time.

## Dues News:

While dues are not required for anyone interested in playing at the club, they are required for those competing in tournament play. Annual Dues are \$20.00 for adults and \$10.00 for those under 19. Dues funds are used to offset miscellaneous expenses not funded by the Recreation Department.

**Memberships for the following have expired:**

**Beneker, Gerrit; Mariani, Gino; Kulkarni, Atul & Atharva**

# PHCC Rating Lists

The following list represents only current members of the Port Huron Chess Club. Current USCF ratings were used for members that had them, in order to establish the initial club rating list. The USCF rating format is used as the basis for calculating our club rating list. Members that had no USCF ratings are given a provisional rating based on their performances against regular club members who had USCF ratings. Club rated events will use these ratings for pairing purposes.

## **PHCC Rating List as of 2/18/14**

<u>Name</u>	<u>Rating</u>
Gregg, Alan	1951
West, Tony	1898
Wilkinson, Stew	1879
Rutkofske, Lon	1836
Morabito, Matt	1780
Wingrove, Bill	1695
Broyles, Tom	1692
Jones, G. Avery	1684
Hartwig, Nathan	1683
<b>Fiedler, Bob</b>	<b>1646</b>
Bedy, Noel	1621
Scholfield, Chris	1503
Boucher, Dave	1463
Rob Brown	1300
Cody Trombley	1278
Archer, Kraig	1200
Carey, Jay	1000
Allen, Nathan	984
Nowiski, Adam	919

## **USCF Ratings as of 2/18/14**

<u>Name</u>	<u>Rating</u>
Gregg, Alan	1998
West, Tony	1898
Wilkinson, Stew	1840
Rutkofske, Lon	1816
Morabito, Matt	1794
Fiedler, Robert	1713
Broyles, Tom	1699
Wingrove, Bill	1692
Hartwig, Nathan	1653
Jones, G. Avery	1589
Bedy, Noel	1557
Boucher, Dave	1313
Trombley, Cody	1278

## **PHCC Speed Rating List as of 2/18/14**

<u>Name</u>	<u>Rating</u>
Gregg, Alan	1960
Wilkinson, Stew	1909
Rutkofske, Lon	1864
West, Tony	1826
Hartwig, Nathan	1784
Broyles, Tom	1708
Morabito, Matt	1701
Fiedler, Robert	1608
Jones, G. Avery	1590
Wingrove, Bill	1561
Scholfield, Chris	1552
Bedy, Noel	1519
Nowiski, Adam	1364
Trombley, Cody	1292
Carey, Jay	1000
Allen, Nathan	984
Archer, Kraig	750

Port Huron Area School District  
Phil Willard Memorial  
Chess Tournament

**Saturday, March 22, 2014**

8:00 a.m. - 1:00 p.m.

Port Huron High School Cafeteria

**REGISTRATION WILL TAKE PLACE FROM:**

8:00 - 8:30 a.m.

**NO LATE REGISTRATIONS ACCEPTED**

Open Tournament - FREE to all  
Port Huron Area School District students  
in grades Kindergarten through 12th

Time limit 15 minutes per player  
per round (Game in 30 minutes)

Prizes will be awarded according to  
the following grade classifications:  
Kdg, 1, 2, 3, 4, 5, 6, 7, 8, 9, 10, 11, 12  
(Grade classifications without a minimum  
of 4 players will be paired in the next  
highest grade classification.)

**5 Round Tournament**

Round 1 - 9:00 a.m.    Round 2 - 9:45 a.m.  
Round 3 - 10:30 a.m.    Round 4 - 11:15 a.m.  
Round 5 - 12:00 p.m.

**Chess Sets will be provided**

Parents are responsible for the transportation and supervision of their children.  
Participants may bring their own refreshments. Pizza and other concessions will be available  
for purchase. Concession proceeds to benefit Hunter Hospitality House.