



# Chess Chatter

Newsletter of the Port Huron Chess Club

---

**Editor: Lon Rutkofske**

**May 2014**

**Vol.33 Number 5**

---

The **Port Huron Chess Club** meets Thursdays, except holidays, from 6:30-10:00 PM, at Palmer Park Recreation Center, 2829 Armour Street, (NE corner of Garfield Street and Gratiot Ave...1 mile North of the Blue Water Bridge) Port Huron, Michigan. Everyone is welcome. All equipment provided. Website: <http://porthuronchessclub.volasite.com>

---

## **Wingrove and Hartwig tie for Under 1700 April Quad Title!**



**Bill Wingrove**



**Nathan Hartwig**

**Gerrit Beneker** and **Noel Bedy** kept the front runners humbled, clipping each of the section leaders for half a point in the final round of the first Under-1700 Quad hosted by the PHCC. Well on his way to an 1800+ USCF rating, **Nathan Hartwig** was heavily favored by the club's gaggle of crusty "second-guessers", but **Bill Wingrove** didn't "stink" enough to knock himself out of contention against the rapidly improving junior. Always teetering on the brink of disaster, Bill consistently challenged the "Fates and survived the "Furies" to finish without a loss. For his part, Nathan played solidly throughout the event not to be outdone by his "elder"!

Thanks has to go to **Gerrit Beneker** who graciously agreed to enter the event by volunteering his services for the remaining open slot in the quad. Although admitting his penchant for abstaining from tournament chess, he performed admirably, contributing some of the most provocative chess of the bunch.

After being upended by Bill (*Or, Charlie as he became affectionately known during the event.*), Noel settled down to complete a respectable 1.5 score in the three round event.

## PHCC 2014 April U1700 Quad

| # | Name             | Rtng | Post | Rd 1 | Rd 2 | Rd 3 | Tot | Prize   |
|---|------------------|------|------|------|------|------|-----|---------|
| 1 | WILLIAM WINGROVE | 1694 | 1697 | W3   | D2   | D4   | 2.0 | \$15.00 |
| 2 | NATHAN HARTWIG   | 1683 | 1688 | W4   | D1   | D3   | 2.0 | \$15.00 |
| 3 | NOEL BEDY        | 1581 | 1588 | L1   | W4   | D2   | 1.5 |         |
| 4 | GERRIT BENEKER   | 1545 | 1528 | L2   | L3   | D1   | 0.5 |         |



## A Dutch Treat:

### Games from the 2014 PHCC Championships

*Stewart Wilkinson is a USCF-rated Postal Master, a former Port Huron Chess Club champion and a consistently top performer in many PHCC events. He is especially noted for his in-depth analyses, collegiality, knowledge of opening theory and familiarity with players in the Port Huron Chess Club.*

Our 2014 PHCC Championships was full of surprises. Newcomer **Tony West** ended **Alan Gregg's** string of four consecutive titles (*Although Alan has yet to lose a single game in any of his five championship bids.- Ed.*) Everyone bought into Dave "The Bruiser" Boucher's story about his black eye. The venerable Ruy Lopez was absent from tournament play. The worst winter in recent memory couldn't halt play even though many intrepid members drove substantial distances to reach the PHCC. Perhaps the biggest surprise was the popularity of the Dutch Defense. Six of the thirty-four games played featured an early f5 for Black, making the Dutch Defense the opening most played in the 2014 PHCC Championships.

The Dutch Defense can be traced back to 1789 and Dutch analyst Elias Stern. The opening was rarely seen in master play for the next one hundred and fifty years, save occasional f5 forays by Alekhine and Nimzovich. To paraphrase GM Nick DeFirmian in **MCO** 2008, this lack of popularity can be attributed to the risk factor. The Dutch ensures an unbalanced, fighting game. However, Black compromises the safety of his King by countering White's queen pawn openings with an early f5.

The legendary Botvinnik proved this risk to be manageable in the 1930's. The Dutch Defense was an integral part of his opening repertoire throughout his championship years. Most theorists and grandmasters were still unimpressed. I recall analyses by GM Reshevsky in **Chess Life**, circa 1972, where he judged the Dutch to be inferior and unsuitable for grandmaster play.

For USCF postal play, I selected this unpopular opening to defend against 1.d4, 1.Nf3, or 1.c4 after studying the games of GM Artur Yusupov. There were two reasons for doing so: first, I could play 1....,e6 inviting the French Defense. If White declined the French with a move other than 2.e4, I could then play 2....,f5; second, Dutch theory was scarce in 1990. I hoped to avoid prepared variations and force my opponents "out of the book" early in the game. In fact, the only book on the Dutch Defense in the USCF catalog was a 1989 work by GM Larry Christensen.

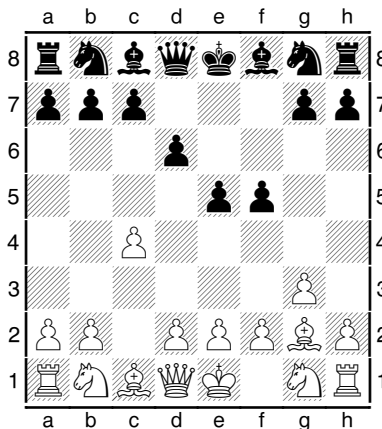
Opening theory on the Dutch exploded in the 1990's. Due to the efforts of GMs Short, Dolmatov, Nikolic, Agdestein, Bareev and Lautier, the Dutch is a mainstream opening today. Devotees today included many Scandinavian masters; even Magnus Carlsen has been known to play the opening that once was considered too risky for championship play. Perhaps the recent popularity of the Dutch in the PHCC isn't that surprising!

The Dutch Defense features three different formations for Black. In the Leningrad System, Black fianchettoes his King Bishop, resulting in pawns at f5, g6 and d6. Oddly, this sharp variation was not played in our 2014 Championships. The Stonewall variation is defined by Black pawns at f5, e6, d5 and usually c6. Three games in the PHCC Championship Tournament featured this array by Black. The Ilyin-Zhenesky System, reminiscent of Botvinnik's strategy, presents a more flexible approach with pawns at f5, e6 and d6. This month we will analyze this system, utilizing the three games played by club members this winter. Next month we will review the Stonewall and Leningrad Variations.

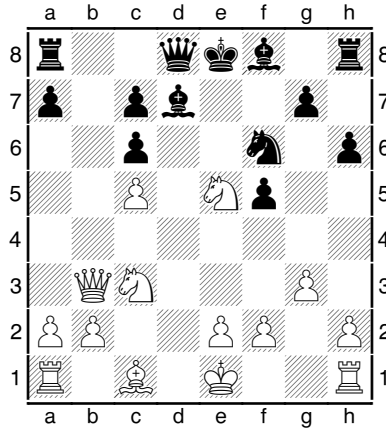
**Rutkofske, Lonnie (1836) - Bedy, Noel (1621) [A20] Dutch Defense by Transposition**

2014 PHCC Championships Port Huron (5), 27.02.2014 [Stewart Wilkinson]

**1.c4 d6 2.g3 e5 3.Bg2 f5!?** Diagram



[Certainly not a classic Dutch formation. Black hopes to gain a tempo by having played e7-e5 in one move. Noel wisely avoids the traditional English lines following 3....,Nc6, or 3....,Nf6 ( Lon's wheelhouse). However, 3....,f5 is risky!] **4.d4 Nf6 5.dxe5 dxe5 6.Qb3?!** [Surely, 6. Qxd8+, Kxd8 7. Nc3 favors White, but the higher rated player seeks complications.] **6...Nc6** [Better are 6....,c6 or 6....,e4 frustrating the Bg2. 6....,Nbd7 is solid.] **7.Bxc6+ bxc6 8.Nc3 Be6 9.Nf3 h6?** [Fatally weakening g6; Lon finishes with a flourish!] **10.Nxe5! Bd7?** [More white square problems.] **11.c5!** Diagram

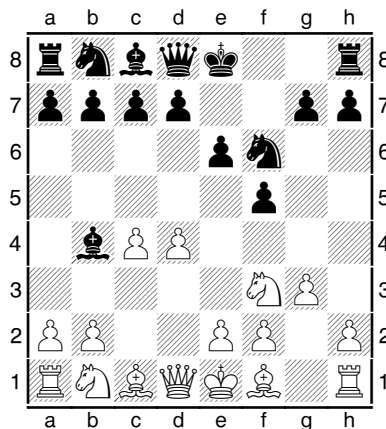


[Black Resigns. Black can play on with 11....,Qe7 or 11....,Nd5, but his position is full of holes!] **1-0**

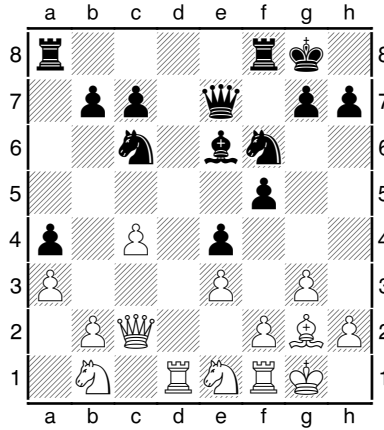
**West, Tony (1898) - Wilkinson, Stewart (1879) [A84] Dutch Defense-Ilyin-Zhenesky System**

2014 PHCC Championships Port Huron (2), 23.01.2014 [Stewart Wilkinson]

**1.d4 e6 2.c4 f5 3.Nf3 Nf6 4.g3 Bb4+!** Diagram



[Alekhines's idea! Black hopes to develop quickly and hinder White's natural development. Not considered by many analysts, 4....,Bb4+ is favored by Fritz 8] **5.Bd2 Bxd2+ 6.Nbxd2 0-0 7.Bg2 d6 8.Qc2 Nc6 9.0-0= e5 10.dxe5 dxe5 11.Rad1 Qe7 12.e3 e4<sup>s</sup> 13.Ne1 Nb4?** [Almost anything is better, 13....,Rd8 or Ne5 are best according to Fritz 8] **14.Qb3 a5 15.a3 Nc6 16.Nb1?** [White's first real error, many moves were better.] **16...a4 17.Qc2 Be6<sup>s</sup>** Diagram



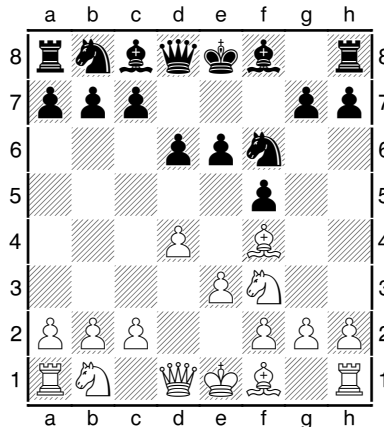
[Black controls space and enjoys coordinated development. White chose not to challenge the center, allowing Black to consolidate his K-side. A later blunder by Black gave Tony a chance and he played a fine ending to earn a key win!]

*(18.Qe2 Ne5 19.Nd2 Rad8 20.f4 Nxc4 21.Nxc4 Rxd1 22.Qxd1 Bxc4 23.Qxa4 Bxf1 24.Bxf1 Qc5 25.Nc2 h6 26.Nd4 Qb6 27.b4 Ng4 28.h3 Nxe3 29.Qb3+ Kh8 30.Qxe3 g6 31.Kf2 Rd8 32.Nb3 Qd6 33.Be2 b6 34.Qc3+ Kh7 35.Ke3 h5 36.Qe5 Qxe5 37.fxe5 Kg7 38.Kf4 Ra8 39.g4 Rf8 40.gxh5 g5+ 41.Kxg5 f4 42.Nd4 f3 43.Bf1 Kh8 44.Kg4 Rg8+ 45.Kf4 Rg1 46.e6 Rg7 47.Nf5 Rg8 48.e7 Re8 49.Kxe4 c6 50.Kxf3 Kh7 51.Kf4 1-0 – the remainder of the game: Editor)*

### **Bedy, Noel (1621) - West, Tony (1898) [A80] Dutch Defense-Ilyin-Zhenesky System**

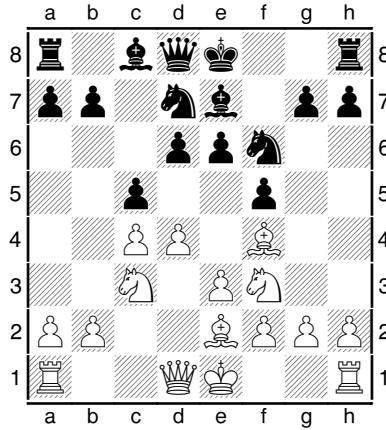
2014 PHCC Championships Port Huron (7), 20.03.2014 [Stewart Wilkinson]

**1.d4 f5 2.Bf4** [White eschews the Staunton Gambit (2.e4) and opts for a solid plan of development.] **2...Nf6 3.e3 e6 4.Nf3 d6** Diagram



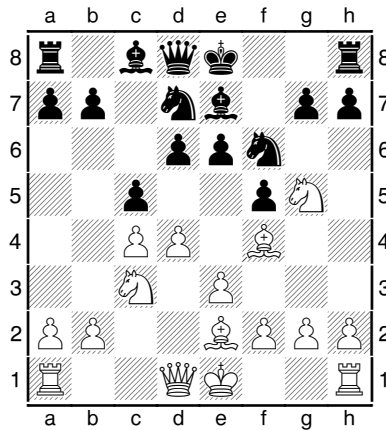
[The Ilyin-Zhenesky System in its traditional form. As illustrated in the previous game, White must act vigorously in the center to obtain an advantage.

**5.c4** [Classical development but Fritz 8 prefers 5. Bc4/Bb5+] **5...Nbd7 6.Be2 Be7 7.Nc3 c5?** Diagram



[A win for Tony clinches the tournament and he makes an uncharacteristic error of aggression. 7....,00 looks safe, but Fritz 8 prefers the defensive maneuver 7....,Nf8.]

Noel's post-game analyses found the riposte 7....,c5? 8.Ng5! leaving Black with an unenviable choice!



[Analyses: From the diagram above showing the position that Noel analyzed after 8.Ng5, Black's choices are: 8....,e5 9.Ne6. Qb6 10.Bh6! and his K-side looks like Swiss cheese; if 8....,Nf8 9.dc5, e5 10.cd6, Qd6 11.Qd6, Bd6 12.000 and White is winning: if 8....,Nb6 9.dc5, e5 10.Bg3 and Black is on the ropes. Noel, however, couldn't find the Knight sortie over the board - a missed opportunity for Noel and a chance for Tony to defend! Back to the game!]

**8.Qc2? 0-0 9.h3?! [9.Ng5 is still best.] 9...Qa5! 10.0-0 cxd4 11.exd4 e5<sup>3</sup> 12.Bd2 Qd8 13.Rad1? [13.Qf5! and White wins the f-pawn outright without relinquishing his positional grip. If 13....,Nb6/Nb8 the Queen stands well after 14. Qd3.] 13...e4 14.Nh2 [14.Ng5 is still best!] 14...Qe8 [Tony has escaped immediate danger and goes on to win the game and the tournament. Congratulations to Tony! Despite White's passivity, Fritz judges the position to be slightly in his favor.] (15.f3 Qg6 16.fxe4 fxe4 17.Ng4 h5 18.Nf2 Nb8 19.Kh1 Nc6 20.Nfxe4 Bf5 21.Bd3 Kh8 22.Be3 Nb4 23.Qe2 Nxd3 24.Rxf5 Qxf5 25.Qxd3 Nxe4 26.Nd5 Bh4 27.Qb3 Bg3 28.Ne7 Qf1+ 0-1 - the remainder of the game: Editor)**

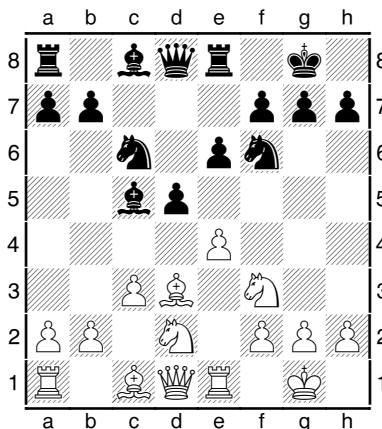
These three games illustrate GM DeFirmian's two key themes of the Dutch Defense. By pushing f7-f5 Black gets a sharp game. By pushing f7-f5 Black weakens his K-side. Next month we will examine these themes as they apply to the Leningrad and Stonewall Dutch variations, by analyzing the games: Jones/Gregg, Jones/Rutkofske and Gregg/West. See You then!

## What's the Best Move- by Stew Wilkinson

**Bedy, Noel (1581) - Beneker, Gerrit (1545) [D05] Colle System**

2014 PHCC April U1700 Quad Port Huron (2), 17.04.2014

**1.d4 d5 2.Nf3 e6 3.e3 Nf6 4.Bd3 Bd6 5.Nbd2 0-0 6.0-0 Re8 7.Re1 c5 8.c3 Nc6 9.dxc5 Bxc5 10.e4** Diagram



A)10....,e5

B)10....,a5

C)10....,de4

D)10....,Qb6

E)10....,Ng4

(Solutions on page 12.)

## Members' Games



*Please send me what you consider your best games, annotated or not, so that I might be able to showcase them. The following games represent contests that have been available at the time of this printing. Email them to me or give them to me personally, if you wish. Majority of analyses is done by Fritz 12, unless otherwise indicated.*

**Brown, Robert (1300) - Rutkofske, Lonnie (1809) [A47]**

**Colle System**

Casual Game Port Huron, 10.04.2014

**1.d4 Nf6 2.Nd2 c5 3.c3 g6 4.Ngf3 b6 5.e3 Bb7 6.Bd3 Bg7 7.0-0 0-0 8.Qc2 d6 9.Re1 Nbd7 10.b3 Rc8 11.Bb2 Re8 12.Rad1 e5 13.dxe5 dxe5 14.e4 h6 15.c4 Qc7 16.h3 Rcd8 17.Bc3 Nb8 18.Qb2 Nc6 19.Nf1 Nh5 20.Be2 Nf4 21.Qc2 Nd4 22.Qb2 Bc8 23.Ng3 Nfxe2+ 24.Nxe2 Nxf3+ 25.gxf3 Bxh3 26.Ng3 f6 27.Rd5 Be6 28.Rdd1 h5 29.Qe2 Bh6 30.Bd2 Bxd2**

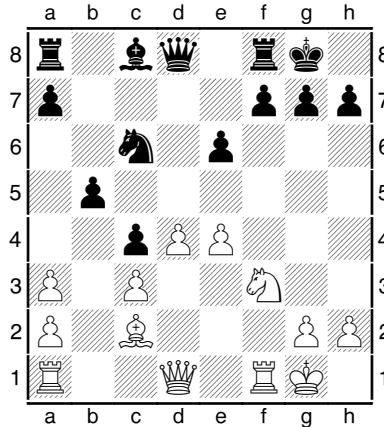
31.Rxd2 Rxd2 32.Qxd2 Kg7 33.Ne2 Rd8 34.Qe3 Qd6 35.Nc3 Qd3 36.Qc1 h4  
 37.Re3 Qd2 38.Re1 Qd7 39.Re3 g5 40.Kf1 Rh8 41.Ke2 Rh7 42.Rd3 Qf7 43.Qh1  
 h3 44.Qh2 Rh4 45.Rd1 Kg6 46.Nd5 Kh5 47.Ne3 Qg6 48.Rg1 Qf7 49.Rg3 Qd7  
 50.Nd5 Qf7 51.Ne3 Qd7 52.Rg1 Qf7 53.Rd1 Qc7 54.Nd5 Bxd5 55.Rxd5 Qc6  
 56.Rd8 Kg6 57.Rd3 b5 58.Rc3 bxc4 59.Rxc4 Qa6 60.Kd3 Qxa2 61.Rc3 Qa1  
 62.Rxc5 Qd4+ 0-1

**Wingrove, William (1694) - Gregg, Alan (1985) [B22]**

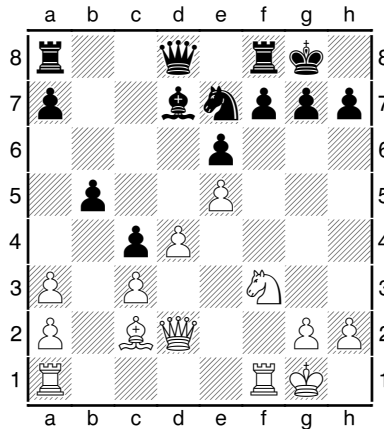
Casual Game Crosswell, 09.04.2014

[gregg,Alan]

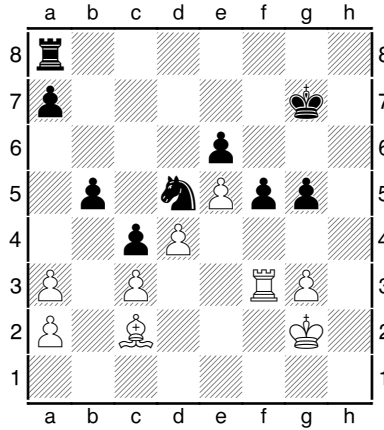
1.e4 c5 2.c3 Nf6 3.e5 Nd5 4.Nf3 e6 5.Bc4 Nb6 6.Bb3 d5 7.exd6 Bxd6 8.0-0 0-0  
 9.d4 Nc6 10.Be3 c4 11.Bc2 Nd5 12.Na3 Nxe3 13.fxe3 Bxa3 14.bxa3 b5 15.e4  
 Diagram



[15.Qb1] 15...Bd7 16.e5 Ne7 17.Qd2 Diagram



[17.Bxh7+ Kxh7 18.Ng5+ Kh6 19.Rf3] 17...Bc6 18.Rad1 h6 19.h3 Nd5 20.Nh2 Qg5  
 21.Qxg5 hxg5 22.Rf3 Nf4 23.Rf2 f5 24.Nf3 Bxf3 25.Rxf3 g6 26.Kh2 Kg7 27.g3  
 Nd5 28.Rdf1 Rh8 29.Kg2 Rxh3 30.Kxh3 g4+ 31.Kg2 gxf3+ 32.Rxf3 g5 Diagram



[32...a5 33.g4 b4 34.gxf5 gxf5 35.cxb4 axb4 36.a4 Kf7 37.Kf2 Rh8] **33.g4 f4 34.Be4 Rd8 35.Bxd5 Rxd5** ½-½

**Beneker, Gerrit (1545) - Hartwig, Nathan (1683) [B27] Sicilian Defense**

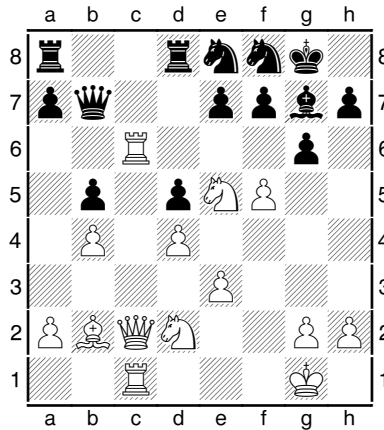
2014 PHCC April U1700 Quad Port Huron (1), 10.04.2014

**1.e4 c5 2.Bc4 Nc6 3.Nf3 g6 4.c3 e6 5.O-O Bg7 6.Re1 Nge7 7.d3 O-O 8.Na3 a6 9.Qa4 d5 10.Bb3 Bd7 11.exd5 Nb4 12.cxb4 Bxa4 13.Bxa4 cxb4 14.d6 bxa3 15.dxe7 Qxe7 16.d4 Qb4 17.Bb3 Bxd4 18.Bd2 Qb6 19.Nxd4 axb2 20.Rab1 Qxd4 21.Be3 Qc3 22.Re2 Rfd8 23.Rbxb2 Qxb3** 0-1

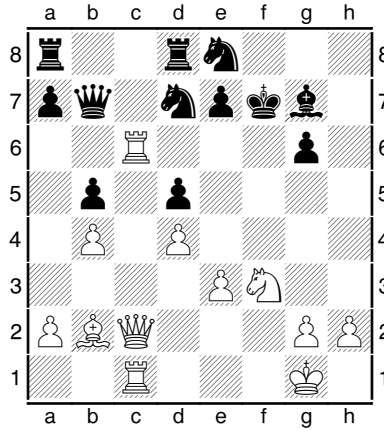
**Bedy, Noel (1581) - Wingrove, William (1694) [A48] Colle System**

2014 PHCC April U1700 Quad Port Huron (1), 10.04.2014

**1.d4 Nf6 2.Nd2 d5 3.Ngf3 g6 4.b4 Bg7 5.Bb2 c6 6.e3 O-O 7.c4 b6 8.Bd3 Re8 9.cxd5 cxd5 10.Rc1 Ba6 11.Bxa6 Nxa6 12.Qa4 Nc7 13.O-O Ne6 14.Rc6 Qd7 15.Ne5 Qb7 16.Rfc1 b5 17.Qc2 Red8 18.f4 Ne8 19.f5 Nf8** Diagram



**20.fxg6 hxg6 21.Ndf3 Nd7 22.Nxf7 Kxf7** Diagram



**23.Ng5+ Kg8 24.Qxg6 Ndf6 25.Qf7+ Kh8 26.Qe6 Qd7 27.Nf7+ Kh7 28.Nxd8 Rxd8 29.Qxd7 Rxd7 30.a4 bxa4 31.Ra6 Bh6 32.Rc3 Nd6 33.Rxa4 Nc4 34.Bc1 Ng4 35.Kf1 Ngxe3+ 36.Bxe3 Bxe3 37.Ke2 Bxd4 38.Rc2 e5 39.g4 Rf7 40.Kd3 Rf2 41.Rxf2 Bxf2 0-1**

**Bedy,Noel (1581) - Beneker,Gerrit (1545) [D05] Colle System**

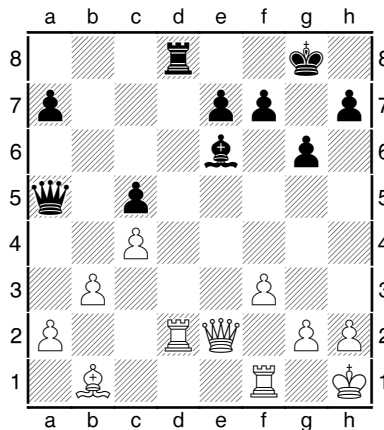
2014 PHCC April U1700 Quad Port Huron (2), 17.04.2014

**1.d4 d5 2.Nf3 e6 3.e3 Nf6 4.Bd3 Bd6 5.Nbd2 0-0 6.0-0 Re8 7.Re1 c5 8.c3 Nc6 9.dxc5 Bxc5 10.e4 e5 11.exd5 Nxd5 12.Ne4 Bb6 13.Bc4 Be6 14.Neg5 Nxc3 15.Qc2 Bxc4 16.Qxh7+ Kf8 17.bxc3 Be6 18.Ba3+ Ne7 19.Qh8# 1-0**

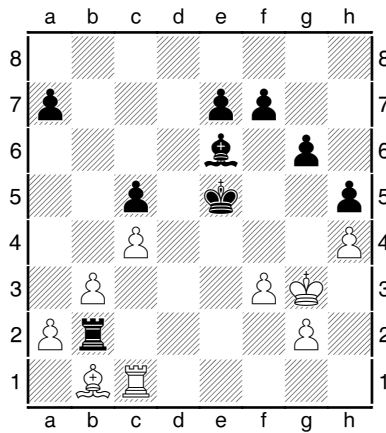
**Wingrove,William (1694) - Hartwig,Nathan (1683) [B34] Sicilian Dragon**

2014 PHCC April U1700 Quad Port Huron (2), 17.04.2014 [Rutkofske]

**1.e4 c5 2.Nf3 g6 3.d4 cxd4 4.Nxd4 Nc6 5.Nc3 Bg7 6.Be3 Nf6 7.f3 0-0 8.Qd2 d5 9.Nxc6 bxc6 10.exd5 Nxd5 11.Rd1 Be6 12.Nxd5 Bxd5 13.b3 Qc7 14.Bd3 Rfd8 15.0-0 Rd7 16.Qe2 Rad8 17.c4 Be6 18.Be4 Bd4 19.Bxd4 Rxd4 20.Kh1 c5 21.Bc2 Qa5 22.Bb1 Rd2 23.Rxd2 Diagram**



**23...Qxd2 24.Qxd2** [From this vantage point, it seems that Black is positionally better, but had he played 23...,Rd2 instead of trading off the Queens, his potential for making tactical inroads would have been far greater. ] **24...Rxd2 25.Kg1 Rb2 26.h3?** [Why did White waste the tempo on his 25th move if he intended h3 all along. ] **26...Kg7 27.Kh2 Kf6 28.Kg3 h5 29.h4 Ke5 30.Rg1 Re2 31.Rd1 Rb2 32.Rc1 Diagram**



**32...Kd6?** [If Black intends to penetrate the White position, why not Kd4, since White is positionally bound up? If 33. Rd1+, Ke3 34.Rd3+, Ke2! and White cannot hold the position.] **33.Re1 Bf5 34.Bxf5 gxf5 35.Rd1+ Kc6** [Draw Agreed.]  $\frac{1}{2}$ - $\frac{1}{2}$

**Hartwig,Nathan (1683) - Bedy,Noel (1581) [B01] Scandinavian Defense**

2014 PHCC April U1700 Quad Port Huron (3), 24.04.2014

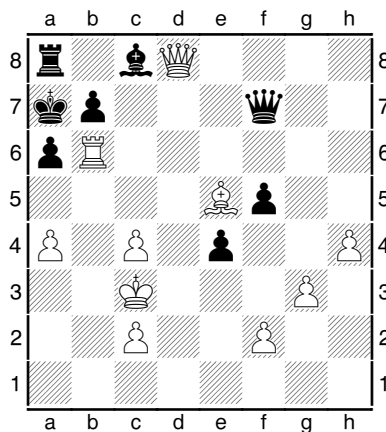
**1.e4 d5 2.exd5 Nf6 3.d4 Bg4 4.Be2 Bxe2 5.Nxe2 Qxd5 6.0-0 Nc6 7.Nbc3 Qf5 8.Ng3 Qd7 9.Nce2 0-0-0 10.c3 e5 11.Be3 exd4 12.Nxd4 Bc5 13.Ndf5 Qe6 14.Qe2 Bxe3 15.Qxe3 Qxe3 16.fxe3 Ng4 17.Rf4 h5 18.h3 g5 19.Rff1 Nge5 20.Nd4 Ne7 21.Rf2 h4 22.Ne4 g4 23.hxg4 h3 24.gxh3 Rxh3 25.Ng5 Rxe3 26.Nxf7 Rg8 27.Nxe5 Rxe5 28.Rg2 Reg5 29.Re1 Nd5 30.Re4**  $\frac{1}{2}$ - $\frac{1}{2}$

**Beneker,Gerrit (1545) - Wingrove,William (1694) [B20] Sicilian Defense**

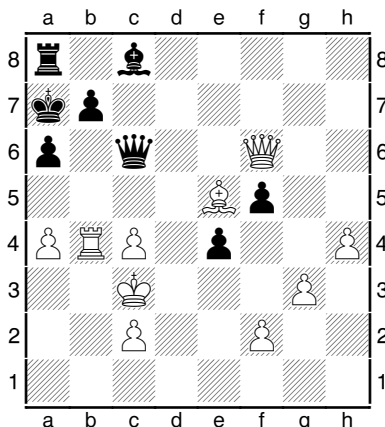
2014 PHCC April U1700 Quad Port Huron (3), 24.04.2014 [*Lon Rutkofske*]

**1.e4 c5 2.Bc4 e6 3.Nc3 a6 4.a4 Nc6 5.Nf3 Qc7 6.d4 cxd4 7.Nxd4 Nf6 8.g3 Bb4 9.Nxc6 Qxc6 10.Bd3 Bxc3+ 11.bxc3 Nxe4 12.c4 Nc3 13.Qg4 Qxh1+ 14.Kd2 g6 15.Kxc3 Qc6 16.Qd4 Rg8 17.Bg5 d6 18.Qf6 Qd7 19.Rb1 h6 20.Be3 Qe7 21.Qf3 h5 22.h4 f5 23.Bg5 Qc7 24.Be3 e5 25.Qd5 Rf8 26.Rb6 Rf6 27.Qg8+ Rf8 28.Qxg6+ Qf7 29.Qxd6 Qe7 30.Qg6+ Qf7 31.Qd6 e4 32.Be2 Qg7+ 33.Bd4 Qd7 34.Bxh5+ Rf7 35.Qe5+ Qe7 36.Qh8+ Kd7 37.Bxf7 Qxf7 38.Bf6 Kc7 39.Qd8+ Kb8 40.Be5+ Ka7**

Diagram



[41.Qd4! should wrap things up nicely!] **41.Bd4 Kb8 42.Be5+ Ka7** [This move represents the second repetition of the position.] **43.Bd4 Kb8 44.Qd6+ Qc7 45.Qf6 Qd7 46.Be5+ Ka7 47.Rb4!! Qc6 48.Bd4+ Kb8 49.Be5+??** [49.Qc6 wins the Q!!] **49...Ka7 50.Bd4+ Kb8** [Represents the third repetition of this position. Before making his 51st move, Black needed to stop the clocks, and call the TD over and claim a draw by repetition of position showing that his 51st move produces the repetition. If in replaying the score sheets, the claim is proven invalid, then his opponent gets two additional minutes added to his/her clock. At this point, unless it is in sudden death, only the player having the move can make a claim, or the game continues.] **51.Be5+ Ka7** Diagram



**52.Qe7 Bd7 53.Bd4+ Kb8** [Draw Agreed]  $\frac{1}{2}$ - $\frac{1}{2}$

## Solution to What's the Best Move.

- Black chose 10....,e5?! After 11.ed5, Nd5 12.Ne4!, Bb6 White thought for about ten minutes before playing 13.Bc4! (During the game I considered the provocative 13.Nfg5!? but Fritz showed that Black can survive with 13....,h6 14.Nf7, Kf7 15.Qh5+,Kf8 16.Bh6.) The game continuation was 11.exd5 Nxd5 12.Ne4 Bb6 13.Bc4 Be6 14.Neg5 Nxc3 15.Qc2 Bxc4 16.Qxh7+ Kf8 17.bxc3 Be6 18.Ba3+ Ne7 19.Qh8# 1-0
- 10....,a5 is interesting. Black gains space, unafraid of the isolani resulting from the exchange at d5. White, however, can counter with 11.e5, Ng4 12.Re2 and stand slightly better.
- 10...., de4? 11.Ne4, Ne4 12.Be4, Qd1 13.Rd1 and Black's Q-side is paralyzed!
- 10....,Qb6 is a good move. 11.Qe2, Ng4 12. Rf1, Nce5 13.Ne5,, Ne5 14.Bc2, Bd7 15.Nh5!, Ng6 looks equal.
- The best move! An immediate 10....,Ng4 is annoying for White. 11.Rf1, Qc7 12.h3, Nge5 equalizes as White's development has been interrupted. 10....,Qb6 is strong but I prefer the Queen at c7.

# PHCC Rating Lists

The following list represents only current members of the Port Huron Chess Club. Current USCF ratings were used for members that had them, in order to establish the initial club rating list. The USCF rating format is used as the basis for calculating our club rating list. Members that had no USCF ratings are given a provisional rating based on their performances against regular club members who had USCF ratings. Club rated events will use these ratings for pairing purposes.

## **PHCC Rating List as of 4/23/14**

| <u>Name</u>       | <u>Rating</u> |
|-------------------|---------------|
| Gregg, Alan       | 1958          |
| West, Tony        | 1914          |
| Wilkinson, Stew   | 1886          |
| Rutkofske, Lon    | 1809          |
| Morabito, Matt    | 1791          |
| Jones, G. Avery   | 1706          |
| Wingrove, Bill    | 1697          |
| Broyles, Tom      | 1692          |
| Hartwig, Nathan   | 1688          |
| Fiedler, Bob      | 1646          |
| Bedy, Noel        | 1588          |
| Beneker, Gerrit   | 1528          |
| Scholfield, Chris | 1503          |
| Boucher, Dave     | 1467          |
| Mariani, Gino     | 1333          |
| Rob Brown         | 1300          |
| Cody Trombley     | 1278          |
| Archer, Kraig     | 1200          |
| Carey, Jay        | 1000          |
| Allen, Nathan     | 984           |
| Nowiski, Adam     | 915           |

## **USCF Ratings as of 4/17/14**

| <u>Name</u>     | <u>Rating</u> |
|-----------------|---------------|
| Gregg, Alan     | 1987          |
| West, Tony      | 1931          |
| Wilkinson, Stew | 1856          |
| Morabito, Matt  | 1802          |
| Rutkofske, Lon  | 1800          |
| Hartwig, Nathan | 1786          |
| Fiedler, Robert | 1713          |
| Broyles, Tom    | 1699          |
| Wingrove, Bill  | 1684          |
| Jones, G. Avery | 1673          |
| Bedy, Noel      | 1494          |
| Boucher, Dave   | 1332          |
| Trombley, Cody  | 1278          |
| Mariani, Gino   | 939P          |
| Nowiski, Adam   | 673P7         |

## **PHCC Speed Rating List as of 4/05/14**

| <u>Name</u>       | <u>Rating</u> |
|-------------------|---------------|
| Gregg, Alan       | 1960          |
| Wilkinson, Stew   | 1909          |
| Rutkofske, Lon    | 1864          |
| West, Tony        | 1826          |
| Hartwig, Nathan   | 1784          |
| Broyles, Tom      | 1708          |
| Morabito, Matt    | 1701          |
| Fiedler, Robert   | 1608          |
| Jones, G. Avery   | 1590          |
| Wingrove, Bill    | 1561          |
| Scholfield, Chris | 1552          |
| Bedy, Noel        | 1519          |
| Beneker, Gerrit   | 1500          |
| Nowiski, Adam     | 1364          |
| Mariani, Gino     | 1333          |
| Trombley, Cody    | 1292          |
| Carey, Jay        | 1000          |
| Allen, Nathan     | 984           |
| Archer, Kraig     | 750           |

## Calendar of Events: Note the change for the First Thursday of Each Month.

**First Thursday of Each Month** - Chess Clinics– 6:30 to 7:00 PM - \$7.50 per person. From 7:00 until 10:00, Players wishing to play games with longer time controls up to G/90 can choose to play match games if they so desire. Participants will be paired randomly and colors will be selected by lot. PHCC club ratings will be used. Players should turn their game scores into Lon, so he can adjust ratings appropriately and showcase the games in *Chess Chatter*.

### May 8<sup>th</sup>

**PHCC 30/30 Tournament:** 30 moves must be made in 30 minutes/and game is SD/30.( This means you must keep score until at least move 30 before the 30 minute SD time control, unless your opponent resigns, or a draw occurs before the 30/30 or SD ends the game.) PHCC speed ratings used . Play will begin at 7:00PM. EF: \$5.00 for adults; \$2.50 for Juniors. A minimum of 4 participants are required. Prizes: 1<sup>st</sup>= \$15, 2<sup>nd</sup>=\$5.

### May 15 thru June 12<sup>th</sup> 2014

**5 Round- USCF Rated Mini-Swiss.** Game/90 minutes with/5 sec. delay. USCF and PHCC membership required. One game per night (May 15, 22, 29, June 5, 12)! Play will begin at 7:00PM. EF: \$5.00 for adults; \$2.50 for Juniors Play will begin at 7:00PM. EF: \$5.00 for adults; \$2.50 for Juniors. A minimum of 6 participants are required. Prizes: based on entries. Please register in advance by contacting Lon Rutkofske by May 14th so he can determine if there are enough entries to hold event.

### Dues News:

While dues are not required for anyone interested in playing at the club, they are required for those competing in tournament play. Annual Dues are \$20.00 for adults and \$10.00 for those under 19. Dues funds are used to offset miscellaneous expenses not funded by the Recreation Department.