



Chess Chatter

Newsletter of the Port Huron Chess Club

Editor: Lon Rutkofske July 2017 Vol.36 Number 6

The **Port Huron Chess Club** meets Thursdays, except holidays, from 6:30-10:00 PM, at Palmer Park Recreation Center, 2829 Armour Street, (NE corner of Garfield Street and Gratiot Ave...1 mile North of the Blue Water Bridge) Port Huron, Michigan. Everyone is welcome. All equipment provided. Email: PtHuronChessClub@aol.com or Website: <http://porthuronchessclub.yolasite.com>

Old Timers Still Show Signs of Life in June Mini-Swiss

Despite a "senior moment " here and there, it appears that the club elders have not completely fallen into the downward spiral to chess oblivion! Both **Lon Rutkofske** and **Bill Wingrove** managed key 3rd round victories thereby demonstrating they have yet to be completely overtaken by bouts of senility managing to maintain some semblance of chess cognition against their youthful counter parts, **Austin Webb** and **Josh Muir** respectively.

PHCC June 2017 Mini-Swiss -- Standings

#	Name/Rtng/ID	Rd 1	Rd 2	Rd 3
2	Lonnie Rutkofske 1834 10288347	B 5 1.0	W 3 2.0	B 6 3.0
3	George Jones 1726 12577178	W 7 0.5	B 2 0.5	B 5 1.5
4	William Wingrove 1602 12181760	B 1 0.5	W 6 0.5	B 7 1.5
6	Austin Webb 1406 16235344	bye 0.5	B 4 1.5	W 2 1.5
7	Josh Muir unr. 16403982	B 3 0.5	W 5 1.0	W 4 1.0
1	Alan Gregg 1948 12824548	W 4 0.5	--- U0.5	--- U0.5
5	Noel Bedy 1529 12626193	W 2 0.0	B 7 0.5	W 3 0.5

Seduced by the "dark side", Austin, whose USCF rating soared nearly 300 points as a result of this event, fell prey to one of Lon's patented swindles as the light saber of "Lord of the Dark Pieces" slashed his way to win a critical exchange in the closing stages of the middle game bringing home a full point in a Tarrasch French!

Bill for his part, schooled USCF newbie, Josh Muir in the nuances of the Sicilian Najdorf dispatching his disheartened challenger in a mere 24 moves!

As for the remaining crusty duo, Avery Jones once again proved it pays never to give up upending and unnerving perennial foe Noel Bedy in an ending where our St. Clair compatriot had forced win.

Thanks to all that participated and we hope you will enjoy the final round games to follow!

Members' Games



Please send me what you consider your best games, annotated or not, so that I might be able to showcase them. The following games represent contests that have been available at the time of this printing. Email them to me or give them to me personally, if you wish. Majority of analyses is done by Fritz 12, unless otherwise indicated. Below are games from the PHCC Archives!

Bedy, Noel (1529) - Jones, G. Avery (1726) [B13] Caro-Kann

2017 USCF/PHCC June Mini-Swiss Port Huron (3),
29.06.2017

1.e4 c6 2.d4 d5 3.exd5 cxd5 4.Bd3 Nc6 5.c3 Nf6 6.Bf4 g6 7.Nd2 Bg7 8.Ngf3 0-0 9.h3 Qb6 10.Qb3 Qxb3 11.axb3 Re8 12.0-0 Nh5 13.Bh2 e5 14.dxe5 Nxe5 15.Nxe5 Bxe5 16.Rfe1 Bxh2+ 17.Kxh2 Rxe1 18.Rxe1 Be6 19.g3 Rc8 20.Nf3 Ng7 21.Nd4 Kf8 22.h4 a6 23.Bf1 Re8 24.Bh3 f5 25.f4 Kf7 26.Kg2 Nh5 27.Kf2 Nf6 28.Bg2 Ne4+ 29.Kf3 h5 30.b4 Bd7 31.Rd1 Bc6 32.Bf1 Ra8 33.Ra1 Nd2+ 34.Ke2 Nxf1 35.Kxf1 Bd7 36.Nf3 Bb5+ 37.Kf2 Re8 38.Re1 Re4 ??? 39.Ng5+ Kf6 40.Nxe4+ dxe4 41.Rd1 Kf7 42.Ke3 Bd3 43.Rxd3 exd3 44.Kxd3 Ke6 45.Kd4 Kd6 46.c4 b6 47.c5+ Kc6 48.cxb6 Kxb6 49.Kc4 Kc6 [The winning sequence should be 50.Kb3, Kb5 51.Ka3, Kc6 52.Ka4, Kb6, 53.b3, Kc6 54.Ka5, Kb7 or Ka7 55.b5!] **50.b5+ axb5+?? 51.Kb4 Kb6 52.b3 Kc6 53.Ka5 Kc5 54.b4+ Kc4 0-1**

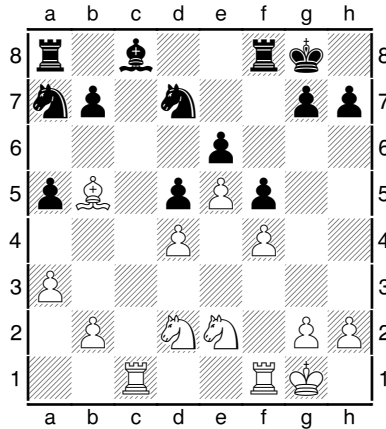
Webb, Austin (1406) - Rutkofske, Lonnie (1834) [C06] French Defense: Tarrasch Var.

2017 USCF/PHCC June Mini-Swiss Port Huron (3), 29.06.2017 (Fritz 12)

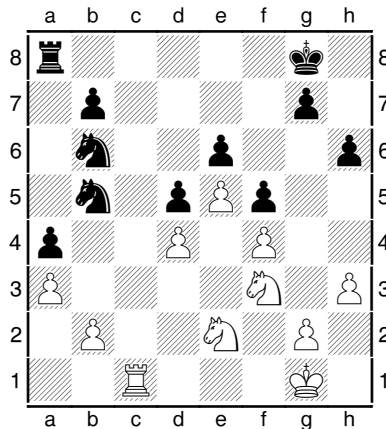
[After Move 24.Rc7....Austin felt he had a significant, even winning advantage. As you can see, Fritz 12 seems to give him a slight edge, but it appears to be less than a full pawn in most of its assessments. My feeling is that with best play, Lon could hold a draw.-LWR]

1.e4 e6 2.d4 d5 3.Nd2 Nf6 4.e5 Nfd7 5.Bd3 c5 [Fritz 12: 5...c5 6.c3 Nc6 7.Ne2 Be7 8.0-0 0-0 9.Nf3 cxd4 10.cxd4 Nb4 11.Nf4 Nxd3 12.Qxd3 Qb6 13.Re1 Re8 14.h3 a5 15.b3 h6 0.28/19] **6.c3 Nc6 7.Ne2 cxd4 8.cxd4** [Fritz 12: 8.cxd4 f6 9.exf6 Nxf6 10.0-0 Bd6 11.Nf3 0-0 12.Bf4 Ng4 13.h3 Bxf4 14.hxg4 Bd6 15.Rc1 e5 16.Qb3 Qa5 0.20/17] **8...Qb6 9.Nf3 Bb4+ 10.Bd2 Bxd2+** [Fritz 12: 10...f6 11.exf6 Nxf6 12.0-0 0-0 13.Bf4 Be7 14.Qb1 Nb4 15.Ne5 Bd6 16.b3 Nxd3 17.Qxd3 Nd7 18.Rac1 Nxe5 19.dxe5 Be7 20.Be3 0.27/19] **11.Qxd2 Qb4 12.0-0 Qxd2** [Fritz 12:1) 12...Qxd2 13.Nxd2 Nb6 14.a3 Bd7 15.Rac1 f6 16.f4 Rc8 17.Nf3 0-0 18.exf6 gxf6 19.b4 Na4 20.Rc2 a5 21.bxa5 Nxa5 22.Rfc1 0.59/17 ; Fritz 12:2) 12...f6 13.exf6 Nxf6 14.Nc3 0-0 15.Rac1 Bd7 16.a3 Qd6 17.h3 a6 18.Rfe1 Rac8 19.Qg5 h6 20.Qd2 b5 21.b4 1.09/17] **13.Nxd2 0-0** [Fritz 12:1) 13...Nb6 14.a3 Bd7 15.Rac1 f6 16.f4 0-0 17.Nf3 Rac8 18.b4 fxe5 19.fxe5 a6 20.h3 Ne7 21.Rxc8 Rxc8 22.Nf4 Nc4 0.51/17 ; Fritz 12:2) 13...0-0 14.a3 Nb6 15.g4 Bd7 16.b3 f6 17.f4 Rac8 18.Kg2 Ne7 19.Rac1 f5 20.h3 Ng6 21.Rc5 Rxc5 22.dxc5 0.57/16 ; Fritz 12:3) 13...f6 14.f4 Nb4 15.Bb1 Nc6 16.Bc2 0-0 17.Rac1 Nb4 18.a3 Nxc2 19.Rxc2 b6 20.exf6 Nxf6 21.Rc6 Bd7 22.Rc7 Kf7 0.60/17 23.Nf3 Fritz 12: 23...Rfc8 24.Ne5+ Ke7 25.Rfc1 Kd6 26.Rxc8 Rxc8 27.Nc3 Ke7 28.Re1 Ne8 29.g4 h6 30.Kf2 Nd6 31.Kg3 Nb5 32.Nxb5 Bxb5 33.f5 exf5 34.gxf5 0.25/18] **14.a3 a5 15.Rac1** [Fritz 12: 15.Rac1 f6 16.f4 fxe5 17.fxe5 Rxf1+ 18.Rxf1 Nb6 19.Nf3 Bd7 20.Nf4 g6 21.Rc1 Rf8 22.g3 Na4 23.Rc2 Kg7 24.Kg2 b6 0.88/18] **15...f6 16.f4** [Fritz 12: 16.f4 Nb6 17.exf6 gxf6 18.Rc5 a4 19.Nf3 Na5 20.f5 exf5 21.Nf4 Nb3 22.Rc3 Re8 23.Rc7 Re3 24.Kf2 Re8 0.96/18] **16...f5** [Fritz 12: 16...Nb6 17.exf6 gxf6 18.Rc5 a4 19.Nf3 Nd7 20.Rb5 f5 21.Rc1 Rf7 22.Nc3 Nf6 23.Bc2 Rc7 24.g3 Ne4 25.Nxa4 Bd7 1.04/18 ; Fritz 12: 16...Nb6 17.exf6 gxf6 18.Rc5 a4 19.Rb5 Ra6 20.Nf3 Bd7 21.Nc3

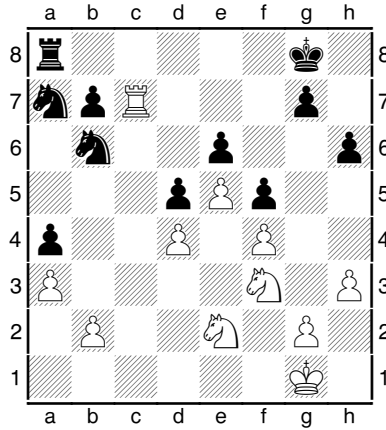
Na5 22.Rc5 Nac4 23.Re1 Ra7 24.Bxc4 dxc4 25.Nd2 Rc8 26.Nde4 Kg7 1.05/19]
17.Bb5 Na7 Diagram



[Fritz 12: 17...Na7 18.Nc3 Nb6 19.Bd3 a4 20.Kf2 Bd7 21.Rc2 Nc6 22.Nb5 Ra5 23.Nf3 Nc4 24.Bxc4 dxc4 25.Nd6 b5 26.Kg3 h6 1.03/19] **18.Rxc8 Nxb5** [Fritz 12: 18...Nxb5 19.Rxa8 Rxa8 20.Rc1 a4 21.Kf2 Kf7 22.Nf3 h6 23.h3 Ke7 24.g4 g6 25.Ke3 Nb6 26.Nd2 Nd7 27.Ng3 Kf7 28.Kd3 fxc4 29.hxc4 0.28/20] **19.Rxa8 Rxa8 20.Rc1** [Fritz 12: 20.Rc1 a4 21.Kf2 Kf7 22.Ke3 Ke7 23.Kd3 Ra6 24.Rc8 Rc6 25.Ra8 Ra6 26.Rg8 Kf7 27.Rc8 Ke7 28.Ng3 Rc6 29.Rxc6 bxc6 0.39/19 ; Fritz 12: 20.Rc1 a4 21.Kf2 Kf7 22.Ke3 h6 23.Kd3 Ra6 24.Rc8 Rb6 25.Ra8 Nc7 26.Rd8 Ke7 27.Rc8 Nb5 28.Rg8 Kf7 29.Ra8 0.39/23] **20...a4** [Fritz 12: 20...a4 21.Kf2 Kf7 22.Ke3 Ke7 23.Kd3 Kd8 24.Nf3 h6 25.h3 Rc8 26.Rxc8+ Kxc8 27.g4 Nb6 28.gxf5 exf5 29.Ng3 Nc4 30.Nxf5 Nxb2+ 31.Ke2 Kd7 32.Nxg7 Nxa3 0.38/23] **21.Nf3** [Fritz 12: 21.Kf2 Kf7 22.Ke3 Ke8 23.Kd3 Kd8 24.Nc3 Ra5 25.Nd1 Ra6 26.Nf3 Ke7 27.Rc8 Rc6 28.Rxc6 bxc6 29.Nc3 Nxc3 30.bxc3 h6 31.g3 Nb6 32.Nd2 Nd7 33.c4 g5 34.fxc5 hxc5 0.39/21] **21...h6** [Fritz 12: 21...h6 22.Kf2 Kf7 23.h3 Rb8 24.Rc2 Rg8 25.Ke3 g5 26.fxc5 hxc5 27.Nc3 Nxc3 28.Rxc3 g4 29.Rc7 Ke7 30.hxc4 Rxc4 31.Kf2 b6 32.g3 f4 33.gxf4 0.30/20] **22.h3** [Fritz 12: 22.Kf2 Kf7 23.Nd2 g5 24.Ke3 Ke7 25.Kd3 Rg8 26.Nf1 Kf7 27.Ne3 Kg6 28.h3 Rf8 29.g3 Kg7 30.h4 Kg6 31.hxc5 hxc5 32.fxc5 Kxc5 33.Nf4 0.31/20] **22...Nb6** Diagram



[Fritz 12: 22...Kf7 23.Kf2 Ra6 24.Ke3 Rb6 25.Rc8 Na7 26.Rc7 Rb3+ 27.Nc3 Ke8 28.Nd2 Rxb2 29.Nxa4 Ra2 30.Rxb7 Rxa3+ 31.Nb3 Rxa4 32.Rxd7 Kxd7 33.Nc5+ Ke7 0.34/21] **23.Rc5** [Fritz 12: 23.Rc5 Na7 24.Rc7 Rb8 25.Nh4 Nc4 26.Re7 Nc6 27.Rxe6 Kf7 28.Rg6 Ne7 29.e6+ Kf8 30.Rg3 Nxb2 31.Rc3 Nc4 32.Kf2 Rc8 33.Nf3 0.54/21]
23...Na7 24.Rc7 Diagram



24...Rb8 25.Re7 [Fritz 12: 25.g4 fxc4 26.hxc4 Nc6 27.Kf2 Na8 28.Rd7 Nb6 29.Rd6 Re8 30.f5 Nc4 31.Rxe6 Rxe6 32.fxe6 Nxb2 33.Nc3 Nc4 34.Nxd5 Nxa3 35.Nc3 Nc2 36.d5 Ne7 0.81/22] **25...Nc4** [Fritz 12: 25...Nac8 26.Re8+ Kf7 27.Rd8 Ra8 28.Nd2 Ke7 29.Rg8 Kf7 30.Rh8 Ne7 31.Rxa8 Nxa8 32.Nc3 Nb6 33.Kf2 Nc6 34.Nb5 Ke7 35.Ke3 Nc8 36.Kd3 0.27/24] **26.Rxe6?? Kf7** [Fritz 12: 26...Kf7 27.Rd6 Nxd6 28.exd6 Nc8 29.Nc3 Nxd6 30.Ne5+ Ke6 31.Nxa4 b6 32.g4 Rc8 33.b4 Rc1+ 34.Kf2 Rc2+ 35.Kf3 Ra2 36.Nxb6 Rxa3+ 37.Kg2 Ra6 38.Nbd7 Ra2+ 39.Kf3 Ra3+ 40.Kg2 -1.90/22] **27.Rd6** [Fritz 12: 27.Rd6 Nxd6 28.exd6 Nc8 29.Nc3 Nxd6 30.Ne5+ Ke6 31.Nxa4 b6 32.Nc3 Rc8 33.g4 fxc4 34.hxc4 Ne4 35.f5+ Kd6 36.Nxe4+ dxe4 37.Kf2 Kd5 38.Ke3 Rc1 39.a4 Re1+ 40.Kf2 -2.02/22] **27...Nxd6 28.exd6 Ke6** [Fritz 12: 28...Nc8 29.Ne5+ Ke6 30.Nc3 Nxd6 31.Nxa4 b6 32.Nc3 Ne4 33.Na4 Kd6 34.Nd3 b5 35.Nac5 Re8 36.g4 fxc4 37.hxc4 Nxc5 38.dxc5+ Kc6 39.Kf2 d4 40.b3 Kd5 -1.96/21 ; Fritz 12: 28...Nc8 29.Nc3 Nxd6 30.Ne5+ Ke6 31.Nxa4 b6 32.Nc3 Ne4 33.Na4 Kd6 34.Nd3 Kc6 35.Nb4+ Kb5 36.b3 Rd8 37.g4 g6 38.Kg2 Rd7 39.gxf5 -2.12/22] **29.Ng3** [Fritz 12: 29.d7 Kxd7 30.Nc3 Kd6 31.Nxa4 Nb5 32.Nc5 b6 33.Nd3 Ke6 34.Kf2 Rc8 35.Ke3 Nd6 36.Nfe5 Rc2 37.g4 Rh2 38.Nf2 Ne4 39.gxf5+ Kxf5 -1.83/21 ; Fritz 12: 29.d7 Kxd7 30.Nc3 Kd6 31.Nxa4 Nb5 32.Nc5 b6 33.Nd3 Ke6 34.Kf2 Rc8 35.g4 Nd6 36.Nfe5 Rc2+ 37.Kf3 Ne4 38.a4 Rh2 -1.85/22] **29...Nb5 30.Ne5 Nxd6** [Fritz 12: 30...Nxd4 31.d7 g5 32.Nd3 b6 33.Kf2 Rd8 34.Ke3 Nc6 35.Ne2 Rxd7 36.Ne1 d4+ 37.Kd3 Kd5 38.h4 g4 39.Nc2 Kc5 40.Ng3 Rd5 41.h5 b5 -4.37/21 ; Fritz 12: 30...Nxd4 31.d7 g5 32.Nd3 b6 33.Kf2 Rd8 34.Ke3 Nc6 35.Ne1 Rxd7 36.Ne2 d4+ 37.Kd3 Kd5 38.Nf3 g4 39.Nh4 Rf7 40.Ng3 gxh3 41.gxh3 Ke6 42.Ngxf5 Rxf5 43.Nxf5 -4.40/21] **31.Nh5** [Fritz 12: 31.Nd3 b6 32.Ne2 Rc8 33.Nb4 Nc4 34.Nd3 Nxb2 35.Nxb2 Rc2 36.Nxa4 Rxe2 37.Nxb6 Rd2 38.g3 Rxd4 39.a4 Rd2 40.a5 d4 -3.79/20 ; Fritz 12: 31.Ne2 Rc8 32.Nc3 b5 33.g4 Ne4 34.Nxb5 Rb8 35.gxf5+ Kxf5 36.Nc7 Nf6 37.Nd3 Rb3 38.Nc5 Rxb2 39.Nxa4 Rb3 40.Kg2 Kxf4 41.Ne6+ -3.90/21] **31...Ne8 32.g4** [Fritz 12: 32.Nd3 b6 33.g4 g6 34.Ng3 Nf6 35.gxf5+ gxf5 36.Ne2 Ne4 37.Kg2 Rc8 38.Nb4 Rc7 39.Kf3 Nd2+ 40.Kf2 Rg7 41.Nd3 Ne4+ 42.Ke3 -3.64/21] **32...Rc8** [Fritz 12: 32...Rc8 33.Nd3 fxc4 34.hxc4 Rc4 35.Kf2 Rxd4 36.Ke3 Rc4 37.Kf3 Rc2 38.f5+ Kd6 39.Nhf4 Nf6 40.Ne6 Rd2 41.Ke3 Rg2 42.Nxc7 -4.37/18] **33.Nd3** [Fritz 12: 33.Nd3 fxc4 34.hxc4 Rc4 35.Kf2 Rxd4 36.Ke3 Rc4 37.Ng3 Nd6 38.Ne2 Nb5 39.Ng3 d4+ 40.Kf3 Rc2 41.Ne4 Ke7 42.Nec5 Rd2 43.Ke4 Re2+ -4.35/20] **33...b6 34.Ng3** [Fritz 12: 34.gxf5+ Kxf5 35.Ng3+ Ke6 36.Ne2 Rc2 37.Nc3 Nc7 38.Nxa4 Rd2 39.Nf2 b5 40.Nc5+ Kf5 41.Ncd3 Ne6 42.Kg2 Re2 43.Kg3 Re3+ 44.Kg2 -3.84/20 ; Fritz 12: 34.gxf5+ Kxf5 35.Ng3+ Ke6 36.f5+ Kf6 37.Nb4 Rc1+ 38.Kf2 Rb1 39.Nxd5+ Kf7 40.Ne4 Rxb2+ 41.Ke3 Rb3+ 42.Kd2 b5 43.Ndc3 Rxa3 44.Nxb5 Rxh3 45.Nec3 Kf6 46.d5 h5 -4.02/19] **34...g6 35.Kf2 Nf6 36.g5** [Fritz 12: 36.Nb4 fxc4 37.hxc4 Nxc4+ 38.Kf3 Nf6 39.f5+ gxf5 40.Nd3 Rc2 41.Nf4+ Kd7 42.Nd3 Rh2 43.Nxf5 Rh3+ 44.Ke2 Rh5 45.Ng3 Rh2+ 46.Kf3 h5 47.Nf5 h4 48.Ne5+ Ke6 49.Ng7+ -

4.32/18] **36...Ne4+** [Fritz 12: 36...Ne4+ 37.Kf3 hxg5 38.Ne2 Rc2 39.fxg5 Nxf5+ 40.Kf2 Nxf3+ 41.Ke1 g5 42.Kd1 Rc8 43.Nc3 Rc4 44.Nb4 Rxd4+ 45.Ke1 Nf4 46.Nxa4 Re4+ 47.Kd2 Re2+ 48.Kc3 Re3+ 49.Kd2 -6.23/19] **37.Nxe4 fxe4 38.Ne5** [Fritz 12: 38.f5+ Kxf5 39.Nb4 hxg5 40.Nxd5 Rc2+ 41.Ke3 Rxb2 42.Ne7+ Ke6 43.Nxg6 Kf6 44.Ne5 Kf5 45.Nc4 Rb3+ 46.Ke2 b5 47.Ne3+ Ke6 48.Nc2 Rxh3 49.Ne3 Rh2+ 50.Ke1 Kd6 51.Nf5+ Kc6 -6.96/21 ; Fritz 12: 38.f5+ Kxf5 39.Nb4 hxg5 40.Nxd5 Rc2+ 41.Ke3 Rxb2 42.Ne7+ Ke6 43.Nxg6 Kf6 44.Ne5 Kf5 45.Nc4 Rb3+ 46.Kd2 b5 47.Nd6+ Kf4 48.Kc2 Rxa3 49.Nxb5 Rxh3 50.Nc7 g4 51.Ne6+ -7.79/25] **38...Rc2+ 39.Ke3 hxg5 40.fxg5 Kf5 41.h4 Rh2 42.Nd7 Rxb2 0-1**

Muir,Joshua - Wingrove,William (1602) [B95] Sicilian Najdorf

2017 USCF/PHCC June Mini-Swiss Port Huron (3), 29.06.2017

1.e4 c5 2.Nf3 d6 3.d4 cxd4 4.Nxd4 Nf6 5.Nc3 a6 6.Bg5 e6 7.f4 Be7 8.Qd2 0-0 9.0-0-0 Qc7 10.Bd3 Nbd7 11.Nb3 b5 12.a3 Bb7 13.Rhg1 Rac8 14.Rde1 Rfe8 15.g4 Nc5 16.Nxc5 Qxc5 17.Bh4 b4 18.Bf2 bxc3 19.bxc3 Qxa3+ 20.Kd1 Qxc3 21.Qe2 d5 22.Be3 dxe4 23.Bd2 Qa1+ 24.Bc1 exd3 0-1

Game of the Month for July 2017

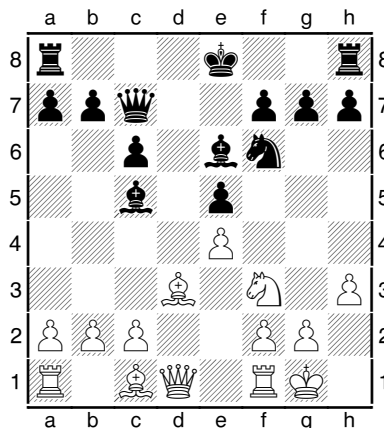
I selected this game as an illustration of the rapid improvement of some of our enthusiastic younger players. I asked both Bill and Austin after this game if they would mind putting some annotations together as to their thinking during the contest. Austin took on the challenge as I await a rebuttal from the sage of Birchville! [Ed.]

Wingrove,William (1602) - Webb,Austin (1406) [B40] Sicilian Defense

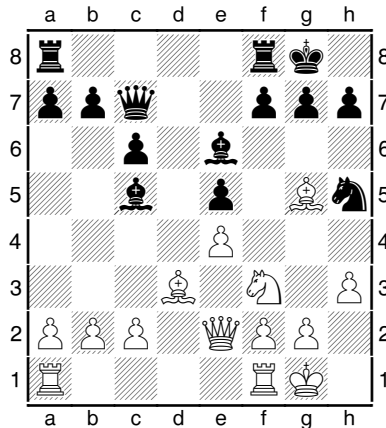
2017 USCF/PHCC Rated June Mini-Swiss Port Huron (2), 22.06.2017

[A. Webb]

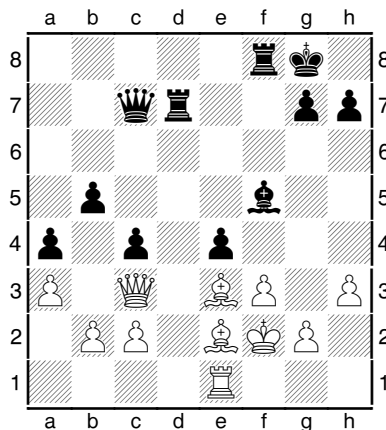
1.e4 c5 2.Nf3 e6 3.d4 cxd4 4.Nxd4 Nf6 After 5. Nd2, which was the first off-putting move from my perspective, 5. ...d6 is recommended to avoid the following: 5. Nd2 Nc6 6. Nxc6 bxc6 7. e5 Nd5 8. c4. **5.Nd2 Nc6 6.Nxc6 dxc6 7.Bd3 e5** I have faced 7. Bd3 a number of times and found that the bishop on d3 is solid; however, it does inhibit the queen. So, there is time to play e5 and it is necessary for black, otherwise white will play e5 and attack the knight on f6 and open the light-squared bishop. **8.h3 Be6 9.0-0 Bc5 10.Nf3 Qc7**
Diagram



10. Nf3 is a very logical move and is given by Stockfish as one of the top two moves along with 10. h4 (trying to create a weakness for black on the queen-side). I unfortunately didn't expect it. I assumed white would orchestrate a plan such as 10. Nc4 b5 11. Ne3 trying to access the f5 square. However, now that seems to be a bit lengthy of a plan and I agree with 10. Nf3 being the superior move as it disrupted my plan of development. Black is now forced to play Qc7 to avoid pins with Bg5. **11.Qe2 0-0** During the game I thought the reason behind 11. Qe2 was meant to play Bc4 and trade off black's good light-squared bishop for white's bad light-squared bishop. I think it would be a good improvement. **12.Bg5 Nh5** Diagram



On move 10. I calculated Qc7 to defend the e5 pawn but was worried about Bg5. I found a nice resource of Nh5 and possibly jumping into the f4-square. **13. Nxe5 Qxe5 14. Qxh4 f6** was a convenient resource to keep cohesion amongst my pieces—allowing my knight the h5 to f4 maneuver. **13.Nd2 Ng3** 13. Nd2 was an unfortunate retreat. I expected 13. Re1 or Rg1 to avoid the fork. But the hardest thing about chess is winning a won game and the game isn't over due to white's resilience. **14.Qf3 Nxf1 15.Nxf1 a5 16.Ne3 f6 17.Bh4 Bxe3 18.Qxe3 a4 19.a3 Rad8 20.f3 c5 21.Bf2 c4 22.Be2 Rd7 23.Qc3 Rfd8 24.Be3 b5 25.Kf2 f5 26.Bg5 Rf8 27.exf5 Bxf5 28.Re1 e4 29.Be3** Diagram



29. Bxh3 was a very “flashy” and immature move. It isn't losing, but it gives up other advantages for black if white plays 30. f4. This would close up the king-side and prove more difficult to break through. **29...Bxh3 30.gxh3 Qh2+**

31.Kf1 exf3 There is a missed mate in 5 by black here. 31... Rxf3+ 32. Bxf3 exf3 33. Qd2 Rxd2 34. Re2 fxe2+ 35. Ke1 Rd1# I did not see it nor consider it during the game. My plan since 29. Bxh3 was to take with the e-pawn if I got to this position. I've noticed it is hard for humans to switch psychologically when there is a plan already in motion. **32.Bxc4+ bxc4 33.Qxc4+ Kh8 34.Qg4 Re7 35.Bf2 Qh1+ 36.Bg1 Rxe1+ 37.Kxe1 f2+ 38.Kd2 fxf1R 0-1**

PHCC Rating Lists

The following list represents only current members of the Port Huron Chess Club. Current USCF ratings were used for members that had them, in order to establish the initial club rating list. The USCF rating format is used as the basis for calculating our club rating list. Members that had no USCF ratings are given a provisional rating based on their performances against regular club members who had USCF ratings. Club rated events will use these ratings for pairing purposes.

PHCC Rating List as of 7/5/17

<u>Name</u>	<u>Rating</u>
Bruziewicz, Andrew	2118
West, Tony	1945
Gregg, Alan	1927
Rutkofske, Lon	1897
Morabito, Matt	1884
Lahr, Frederick	1819
Jones, G. Avery	1730
Webb, Austin	1723
Wingrove, Bill	1662
Roome, Eric	1641
Bedy, Noel	1610
Oriel, Paul	1569
Muir, Josh	1469
Beneker, Gerrit	1380
Albany, Ethan	1100
Nowiski, Adam	969
Best, Don	890
Best, Liam	705
Allen, Carson	700

USCF Ratings as of 7/5/17

<u>Name</u>	<u>Rating</u>
Bruziewicz, Andrew	2121
Gregg, Alan	1937
West, Tony	1896
Rutkofske, Lon	1858
Morabito, Matt	1848
Lahr, Frederick	1809
Webb, Austin	1723P12
Jones, G. Avery	1712
Wingrove, Bill	1616
Roome, Eric	1546
Bedy, Noel	1510
Muir, Joshua	1469P

PHCC Speed Ratings as of 7/1/17

<u>Name</u>	<u>Rating</u>
Bruziewicz, Andrew	2249
Gregg, Alan	1957
Roome, Eric	1916
Rutkofske, Lon	1834
West, Tony	1815
Lahr, Frederick	1812
Morabito, Matt	1796
Jones, G. Avery	1640
Wingrove, Bill	1564
Webb, Austin	1562
Oriel, Paul	1500
Bedy, Noel	1456
Nowiski, Adam	1364
Beneker, Gerrit	1287
Muir, Josh	1284
Albany, Ethan	1100
Best, Don	890
Best, Liam	705
Allen, Carson	700

Calendar of Events: [Note the change for the First Thursday of Each Month.](#)

First Thursday of Each Month - Chess Clinics- 6:30 to 7:00 PM - \$7.50 per person. From 7:00 until 10:00. Players wishing to play Challenge matches with longer time controls of G/60 with 5 sec delay can choose to play match games if they so desire. Participants will be required to follow the rules and regulations for **Challenge Play** (As outlined in Chess Chatter, our website under "Club Member Ratings Lists", or posted at the club.) and colors will be selected by lot. PHCC club ratings will be used. Players should turn their game scores into Lon, so he can adjust ratings appropriately and showcase the games in *Chess Chatter*.

2017 Events Schedule:

July 13, 20, 27 **PHCC Rated Action Double RR G/30 (2 Games/night) - EF: \$5.00 /under-19 = \$2.50.**
Time controls: G/30; Rounds begin at 7:00 PM on July 13, 20, and 27th. One round each Thursday. Each player plays two games per opponent per night, one with white and one with black. Please email Lon to let him know if you plan to play. Prizes based on 4 players: 1st - \$20; 2nd - \$10. PHCC speed ratings will be used and you must be a member of the PHCC to participate.

August 10 **Double Round Robin G/5 Blitz Tournament**

August 17 **Fischer 960 Tournament - DRR - G/10**

Sept. 7, 14, 21, 28, & October 5 - PHCC/USCF Rated G/90 Swiss (1 game/night- 5 Rds) **Note Change!**

October 12 **Handicap Speed Tournament G/5**

October 26 **PHCC G/5 Speed Championships**

Nov. 16 **18th Duncan Memorial Turkey Gobbler Tournament**

December **No tournaments**

Dues News:

While dues are not required for anyone interested in playing at the club, they are required for those competing in tournament play. Annual Dues are \$20.00 for adults and \$10.00 for those under 19. Dues funds are used to offset miscellaneous expenses not funded by the Recreation Department. United States Chess Federation memberships are available through the club.