



Chess Chatter

Newsletter of the Port Huron Chess Club

Editor: Lon Rutkofske September 2017 Vol.36 Number 8

The **Port Huron Chess Club** meets Thursdays, except holidays, from 6:30-10:00 PM, at Palmer Park Recreation Center, 2829 Armour Street, (NE corner of Garfield Street and Gratiot Ave...1 mile North of the Blue Water Bridge) Port Huron, Michigan. Everyone is welcome. All equipment provided. Email: PtHuronChessClub@aol.com or Website: <http://porthuronchessclub.yolasite.com>

Gregg secures a trifecta by capturing the Fischer 960 Event:

First it was the July G/30 DRR, then the August Blitz (See August CC for reports on these tournaments), and now the Fischer 960 (Also known as Fischer Random) DRR event! Not too shabby for a guy that professes he cannot play fast chess! Josh Muir salvaged his reputation by tying Bill Wingrove, who finally had to win a game to share 2nd/3rd prize money, edging Noel Bedy who scored 5 points. Since this was the first tournament open to all that wished to play, Rita Luzynski and Lafonce Jackson were initiated into tournament play, and despite having the time control halved for the final two rounds to meet club hours, both played some very interesting chess!

Bravo to all that played, and we are looking forward to having everyone back for the remainder of our tournament schedule.

August 2017 Fischer Random G/10 tourney -- Standings

#	Name/Rtng/ID	Rd 1	Rd 2	Rd 3	Rd 4	Rd 5
2	Alan Gregg	1	6	4	3	5
	unr.	2.0	4.0	6.0	7.0	9.0
3	Josh Muir	6	5	1	2	4
	unr.	0.0	2.0	3.0	4.0	6.0
6	William Wingrove	3	2	5	4	1
	unr.	2.0	2.0	3.0	5.0	6.0
1	Noel Bedy	2	4	3	5	6
	unr.	0.0	2.0	3.0	4.0	5.0
5	LaFonce Jackson	4	3	6	1	2
	unr.	2.0	2.0	3.0	4.0	4.0
4	Rita Luzynski	5	1	2	6	3
	unr.	0.0	0.0	0.0	0.0	0.0

Quick Rules for Fischerandom Chess

- I. Fischerandom Chess is played with a normal chess board and pieces. All rules of Orthodox Chess apply except as otherwise noted.

- II. The initial configuration of the chess pieces is determined randomly for White, and the black pieces are placed equal and opposite the white pieces. The piece placement is subject to the constraints:
- the king is placed somewhere between the two rooks, and
 - the bishops are on opposite colors.
 - pawns are placed on each player's second rank as in Orthodox Chess.

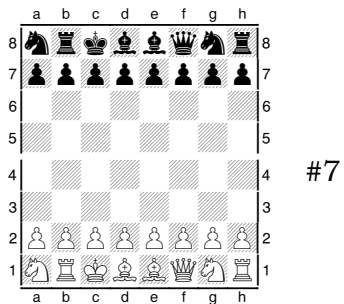
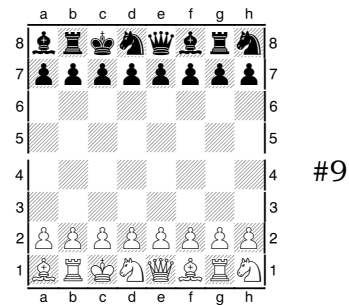
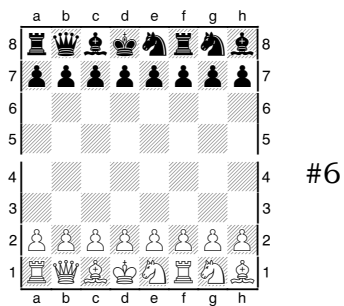
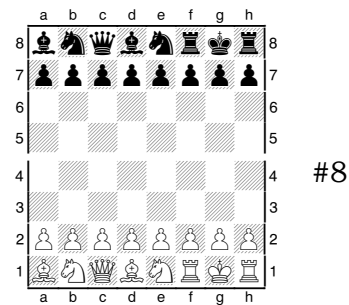
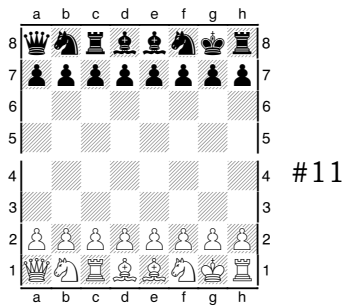
There are 960 such configurations.

- III. Castling, as in Orthodox chess, is an exceptional move involving both the King and Rook. Castling is a valid move under these circumstances:
- Neither King nor Rook has moved.
 - The King is not in check before or after castling.
 - All squares between the castling King's initial and final squares (including the final square), and all of the squares between the castling Rook's initial and final squares (including the final square), must be vacant except for the King and Rook.
 - No square through which the King moves is under enemy attack.

The movement of the King and Rook during castling should be easily understood by players of Orthodox Chess:

- When castling on the h-side (White's right side), the King ends on g1 (g8), and the rook on f1 (f8), just like the O-O move in Orthodox chess.
 - When castling on the a-side (White's left side), the King ends on c1 (c8), and the rook on d1 (d8), just like the O-O-O move in Orthodox chess.
 - Sometimes the King will not need to move; sometimes the Rook will not need to move. That's OK.
- IV. The object is to checkmate the opponent's King. Have fun!

- V. Position Diagrams: Rd.1(11)s; Rd.2(6); Rd.3(7);Rd.4(8); Rd.5(9) For August 2017 Fischer Random Tnmt!



What I did on my summer vacation!

At the end of August I had an opportunity to take a trip to St. Louis as my wife attended a sewing convention at the Hyatt Regency under the Arch. While she spent time in countless meetings, I managed to take a brief trek to the Chess Club and Scholastic Center of St. Louis, in the suburb of Forest Park, some 5 miles from downtown. The pictures that follow hope to convey a thriving chess community in St. Louis and presents a view of what an ideal chess community can be. It would be well worth your time to peruse its website: <https://saintlouischessclub.org>.







Members' Games



Please send me what you consider your best games, annotated or not, so that I might be able to showcase them. The following games represent contests that have been available at the time of this printing. Email them to me or give them to me personally, if you wish. Majority of analyses is done by Fritz 12, unless otherwise indicated. Below are games from the PHCC Archives!

Everitt, Morgan (2034) - Rutkofske, Lonnie (1851) [B06] Modern Defense

2017 Michigan Senior Champs Flint (1), 12.08.2017

1.e4 g6 2.d4 d6 3.Nc3 a6 4.Bc4 Bg7 5.Nf3 h6 6.h3 b5 7.Bb3 Bb7 8.0-0 Nd7 9.Re1 e6 10.a4 b4 11.Na2 a5 12.c3 c5 13.Bf4 Ndf6 14.Bxd6 Qxd6 15.e5 Qb6 16.exf6 Bxf6 17.d5 0-0-0 18.cxb4 Bxd5 19.Bxd5 Rxd5 20.Qc2 axb4 21.a5 Qb5 22.a6 Kb8 23.Nd2 Ne7 24.a7+ Kb7 25.Nc4 b3 26.Qe4 bxa2 27.Nd6+ 1-0

Rutkofske, Lonnie (1851) - Gregg, Alan (1937) [E07] Catalan Closed

2017 Michigan Senior Champs Flint (2), 12.08.2017

1.c4 e6 2.g3 d5 3.Bg2 c6 4.b3 Nf6 5.Nf3 Nbd7 6.0-0 Be7 7.d4 0-0 8.Nc3 b6 9.Rb1 Bb7 10.Qc2 Rc8 11.Rd1 c5 12.dxc5 Bxc5 13.b4 Be7 14.cxd5 Nxd5 15.Bb2 Bxb4 16.Rxd5 exd5 17.Bh3 Bxc3 18.Bxc3 Rc7 19.Qb2 Nf6 20.Nd4 Ne4 21.Bb4 Nc5 22.Nb3 Bc8 23.Bg2 Be6 24.Nxc5 bxc5 25.Ba5 Qc8 26.Bxc7 Qxc7 27.Rc1 Qb6

28.Qd2 Rd8 29.e3 g6 30.Bf1 Rb8 31.Bd3 c4 32.Rb1 Qc7 33.Rc1 Qe5 34.f4 Qb2
35.Qxb2 Rxb2 36.Bb1 f5 37.h3 Re2 38.a3 Rxe3 39.Kf2 Rxa3 0-1

Morabito,Matthew (1839) - Gregg,Alan (1937) [E17] Queen's Indian Defense

2017 Michigan Senior Champs Flint (3), 13.08.2017 [Alan]

1.Nf3 d5 2.g3 Nf6 3.Bg2 e6 4.c4 c6 5.0-0 Be7 6.b3 Nbd7 7.Bb2 0-0 8.Nc3 b6
9.Rc1 Bb7 10.cxd5 exd5 11.d3 c5 12.d4 Rb8 13.Re1 Re8 14.Ne5 cxd4 15.Nxd7
Qxd7 [15...dxc3 16.Nxf6+ Bxf6 17.Bxc3 d4 18.Bxb7 Rxb7 19.Bb4] 16.Qxd4 Bc5
17.Qd2 d4 18.Nd1 Bxg2 19.Kxg2 Ne4 20.Qd3 Bb4 21.Rf1 Rbd8 22.a3 Bf8
[22...Nc5 23.Qf3 Bd2 24.Rc4 Qe6 25.Bxd4 Ne4] 23.b4 b5 24.Rc2 Ng5 25.f3 Ne6
26.e3 dxe3 27.Qxd7 Rxd7 28.Re1 Rd2+ [28...Nd4 29.Bxd4 Rxd4 30.Rxe3 Rxe3
31.Nxe3 Rd3] 29.Rxd2 exd2 30.Re2?? [30.Re4] 30...Nf4+ 0-1

Gregg,Alan (1937) - Williams,Ronald (1899) [D00] Queen Pawn Game

2017 Michigan Senior Champs Flint (4), 13.08.2017 [Alan]

1.d4 Nc6 2.Bf4 d5 3.e3 g6 4.Nd2 Nf6 5.Ngf3 Bg7 6.Bb5 Bd7 7.c3 0-0 8.Bxc6 Bxc6
9.0-0 Bb5 10.Re1 Ne4 11.a4 Ba6 12.Ng5 Nxe5 13.Bxg5 h6 14.Bf4 f5 15.Nf3 c6
16.Be5 Bf6 17.h4 b6 18.Bf4 Kg7 19.Be5 Qd7 20.a5 b5 21.b4 Rae8 22.Bg3 g5
23.Ne5 Bxe5 24.Bxe5+ Kg6 25.hxg5 hxg5 26.f4 Rf7 27.Kf2 e6 28.Rh1 Rh7 29.Qf3
[29.fxg5 with a big advantage] 29...g4 30.Qg3 Ree7? losing...best was Qe7 [30...Qe7
31.Rag1 (31.Rh3 Rf8 32.Rah1 Rff7 33.Rh4 Rxh4) 31...Rd8 32.Ke2 Rd7 33.Rh3 Qe8
34.Rgh1 Qd8 35.Kd3 Rdf7 36.Rxh7 Rxh7 37.Rxh7 Kxh7 38.Qh2+ Kg6] 31.Rh4 Qe8
32.Rah1 Qg8 33.Qh2 1-0

Jones,G. Avery (1623) - Muir,Joshua (1469) [D02] Queen Pawn Game

2017 Sept-Oct USCF RR Port Huron (1), 07.09.2017

1.d4 Nf6 2.Bf4 d5 3.h3 e6 4.e3 c5 5.c3 Nc6 6.Nd2 Be7 7.Ngf3 0-0 8.Bd3 b6 9.0-0
Bb7 10.Ne5 Bd6 11.Bh2 Qc7 12.f4 Ne7 13.Qf3 h6 14.g4 Nd7 15.Qg3 f6 16.Ng6
Rf7 17.Nf3 Nf8 18.Nfh4 Nh7 19.Qg2 Re8 20.Qc2 Nf8 21.Rf2 Bc8 22.Raf1 f5
23.Ne5 Rf6 24.g5 hxg5 25.fxg5 Rg6 26.Rg2 Kh7 27.Qe2 Ng8 28.Qh5+ Nh6
29.Nhxg6 Nxe6 30.Qxe6+ Kh8 31.gxh6 resigns 0-1

Bedy,Noel (1541) - Wingrove,William (1616) [B22] Sicilian Alapin

2017 Sep-Oct USCF RR Port Huron (1), 07.09.2017

1.e4 c5 2.d4 cxd4 3.c3 Nf6 4.e5 Nd5 5.Qxd4 e6 6.Nf3 Nc6 7.Qe4 f5 8.Qe2 Be7
9.g3 Qc7 10.Bg2 0-0 11.0-0 a5 12.Rd1 Rb8 13.c4 Nb6 14.Nc3 Na7 15.b3 Bb4
16.Bb2 Rd8 17.Rac1 d6 18.exd6 Bxd6 19.Nb5 Nxb5 20.cxb5 Qe7 21.Rxd6 Rxd6
22.Be5 Nd5 23.Bxd6 Qxd6 24.Qe5 Qxe5 25.Nxe5 Nf6 26.a4 Kf8 27.Nc4 b6
28.Nxb6 Bb7 29.Bxb7 Rxb7 30.Nc4 Ke7 31.Rd1 Ne4 32.Nxa5 Rb6 33.Nc4 Rb7
34.Kf1 Nc5 35.Rb1 Rd7 36.a5 Rd3 37.Ke2 Rxb3 38.Rxb3 Nxb3 39.a6 Nd4+
40.Kd3 Nxb5 ½-½

Rutkofske,Lonnie (1839) - Morabito,Matthew (1825) [A38] Symmetrical English

2017 Sep-Oct USCF RR Port Huron (1), 07.09.2017

1.Nf3 Nf6 2.g3 g6 3.Bg2 Bg7 4.0-0 c5 5.c4 0-0 6.Nc3 Nc6 7.d3 d5 8.cxd5 Nxd5
9.Bd2 Nxc3 10.bxc3 e5 11.Qc1 Bg4 12.Rb1 Qc7 13.Qa3 b6 14.h3 Bxf3 15.Bxf3
Rad8 16.Rfc1 c4 17.Qa4 Na5 18.d4 exd4 19.cxd4 Bxd4 20.Bf4 Be5 21.Bxe5 Qxe5
22.Qc2 Rd6 23.Rd1 Rfd8 24.Rxd6 Qxd6 25.e3 Qd3 26.Rb2 Qxc2 27.Rxc2 Rc8
28.Kf1 Rc5 29.Ke1 Nc6 30.Be2 c3 31.a3 b5 32.f4 a5 33.Bxb5 Rxb5 34.Rxc3 Rb6
35.Kd2 Kf8 36.Kd3 Ke7 37.e4 Kd7 38.Kc4 Kc7 39.g4 a4 40.h4 Na5+ 41.Kd5+
Rc6 42.Rh3 Nb3 43.e5 Rc5+ 44.Ke4 Rc4+ 45.Kd5 Rd4# 0-1

Jones,G. Avery (1623) - Bedy,Noel (1541) [A45] Trompowsky's Opening

2017 Sep-Oct USCF RR Port Huron (2), 14.09.2017

1.d4 Nf6 2.Bf4 e6 3.e3 c5 4.c3 cxd4 5.exd4 d5 6.Nf3 Bd6 7.Ne5 a6 8.Nd2 Nbd7
9.Ndf3 0-0 10.h3 Qc7 11.Bd3 b5 12.0-0 Re8 13.Re1 Bb7 14.Nd2 Rac8 15.a3 Nb6
16.Bg5 Nbd7 17.Bf4 Nf8 18.Qf3 N6d7 19.Bg3 Bxe5 20.Bxe5 Nxe5 21.Rxe5 f5
22.Rae1 Bc6 23.Nb3 Bd7 24.Nc5 a5 25.Qe2 Ng6 26.Nxd7 Nf4 27.Qf3 Nxd3
28.Qxd3 Qxd7 29.Qe2 Kf7 30.Qh5+ Kg8 31.Qe2 Kf7 32.g4 fxd4 33.hxg4 Rc4
34.f4 Rc6 35.Qxb5 Qc7 36.f5 Rb8 37.Qe2 exf5 38.Re7+ Resigns 1-0

Wingrove,William (1616) - Rutkofske,Lonnie (1839) [B00] Queen's Fianchetto Defense

2017 Sep-Oct USCF RR Port Huron (2), 14.09.2017

1.e4 g5 2.d4 e6 3.Be3 Bg7 4.Nc3 a6 5.Qd2 h6 6.Nge2 Nf6 7.h3 b5 8.e5 Nd5
9.Nxd5 exd5 10.f4 Nc6 11.Ng3 gxf4 12.Bxf4 d6 13.Nh5 Qh4+ 14.Ng3 dxe5
15.dxe5 Be6 16.Qe3 0-0-0 17.0-0-0 Rhe8 18.Bd3 Kb7 19.Rhf1 f6 20.Qc5 fxe5
21.Bxb5 Rd6 22.Be3 axb5 23.Qxb5+ Kc8 24.Nf5 Bxf5 25.Rxf5 Qb4 26.Qa6+ Qb7
27.Qf1 e4 28.c3 Na5 29.Rf7 Be5 30.Bc5 Rde6 31.Rf8 Qc6 32.Rxe8+ Rxe8 33.Bb4
Nc4 34.Qf7 d4 35.Qf5+ Kb8 36.Kb1 Ne3 0-1

Morabito,Matthew (1825) - Muir,Joshua (1469) [A04] K-I Attack

2017 Sep-Oct USCF RR Port Huron (2), 14.09.2017

1.Nf3 c5 2.g3 g6 3.Bg2 Bg7 4.0-0 e6 5.d4 cxd4 6.Nxd4 Ne7 7.e4 0-0 8.Nc3 Nbc6
9.Be3 a6 10.Rb1 b5 11.Nce2 Bb7 12.c3 d5 13.Nxc6 Bxc6 14.Bc5 Re8 15.Nd4 Bb7
16.Re1 dxe4 17.Bxe7 Rxe7 18.Bxe4 Bxe4 19.Rxe4 Qd5 20.Qe1 Bxd4 21.Rxd4
Qxa2 22.Rbd1 Ree8 23.Qd2 Qa5 24.Rd7 Qb6 25.Qf4 Rf8 26.Qf6 Qc5 27.Qf3 Rac8
28.Qb7 Qc6 29.Qa7 Ra8 30.Qe3 Qc4 31.R1d4 Qa2 32.Qd2 Qb1+ 33.Kg2 Qf5
34.Rf4 Qc5 35.Rh4 h5 36.Rhd4 h5 [36.Rdd4 looks more promising in preparation for a K-side
attack with Qh6 and Rxh5 as a possible method. If 36...Qc6+ the simple 37. f3 preserves the threat of
Rxh5 followed by Qh6!] Ra7 37.b4 Qc6+ 38.f3 Rxd7 39.Rxd7 Rc8 40.Rd8+ Rxd8
41.Qxd8+ Kg7 42.Qd4+ ½-½

Rutkofske,Lonnie (1839) - Jones,G. Avery (1623) [E06] Catalan

2017 Sep-Oct USCF Rated RR Port Huron (3), 21.09.2017

1.c4 Nf6 2.g3 d5 3.Bg2 c6 4.Nf3 e6 5.b3 Be7 6.0-0 0-0 7.d4 c5 8.dxc5 Bxc5
9.Ba3 Qd6 10.Bxc5 Qxc5 11.cxd5 exd5 12.Qd4 Qd6 13.Rd1 Nc6 14.Qb2 h6
15.Na3 Be6 16.Nc4 Qe7 17.Nce5 Rac8 18.Nxc6 Rxc6 19.Nd4 Rc5 20.Rac1 Rfc8
21.Rxc5 Rxc5 22.a4 a6 23.Bf1 Bg4 24.h3 Bh5 25.Nf5 Qc7 26.Qd4 b6 27.g4 Bg6
28.Nxh6+ Kh7 29.Nf5 Bxf5 30.gxf5 Ne4 31.e3 Rc2 32.f4 Nc3 33.Re1 Ne4 34.Rd1
Nc3 35.Rd2 Rc1 36.Rg2 f6 37.Rd2 Qf7 38.Kg2 Qh5 39.Bxa6 Qh4 40.Be2 Qe1
41.Ba6 Ne4 0-1

Muir,Joshua (1469) - Bedy,Noel (1541) [A10] English Opening

2017 Sep-Oct USCF Rated RR Port Huron (3), 21.09.2017

1.e4 b6 2.c4 Bb7 3.Nc3 e6 4.g3 c5 5.Bg2 Nc6 6.Nge2 g6 7.0-0 Bg7 8.Nb5 d6 9.d3
a6 10.Nbc3 Nge7 11.Be3 0-0 12.Qd2 Nd4 13.Rad1 Nxe2+ 14.Nxe2 d5 15.exd5
exd5 16.Bg5 f6 17.Bh6 Bc6 18.Bxg7 Kxg7 19.Nf4 Qd6 20.Rfe1 Kg8 21.Qc3 d4
22.Qd2 Bxg2 23.Kxg2 Qd7 24.Re6 g5 25.Rde1 Qb7+ 26.Kg1 Nc6 27.Nd5 Ne5
28.Nxf6+ Rxf6 29.Qxg5+ Rg6 30.Qxe5 1-0

Wingrove,William (1616) - Morabito,Matthew (1825) [B76] Sicilian Defense Yugoslav Attack

2017 Sep-Oct USCF Rated RR (3), 21.09.2017

1.e4 c5 2.Nf3 g6 3.d4 cxd4 4.Nxd4 Nc6 5.Nc3 Bg7 6.Be3 d6 7.Qd2 Nf6 8.f3 0-0 9.g4 a6 10.0-0-0 Nxd4 11.Bxd4 Be6 12.Be3 b5 13.h4 Qa5 14.Kb1 Rfc8 15.h5 Rxc3 16.Qxc3 Qxa2+ 17.Kc1 Qa1+ 18.Kd2 Nxe4+ 19.fxe4 Bxc3+ 20.bxc3 Qa5 21.hxg6 fxg6 22.Bd3 Rc8 23.Bd4 b4 24.Ra1 bxc3+ 25.Ke3 Qg5+ 26.Ke2 Bxg4+ 27.Kf1 Rf8+ 28.Bf2 Qf4 29.Bc4+ e6 0-1

PHCC Rating Lists

The following list represents only current members of the Port Huron Chess Club. Current USCF ratings were used for members that had them, in order to establish the initial club rating list. The USCF rating format is used as the basis for calculating our club rating list. Members that had no USCF ratings are given a provisional rating based on their performances against regular club members who had USCF ratings. Club rated events will use these ratings for pairing purposes.

PHCC Rating List as of 9/25/17

Name	Rating
West, Tony	1945
Gregg, Alan	1927
Rutkofske, Lon	1897
Morabito, Matt	1884
Lahr, Frederick	1819
Jones, G. Avery	1730
Webb, Austin	1723
Urick, Ryan	1700
Wingrove, Bill	1662
Roome, Eric	1641
Bedy, Noel	1610
Oriel, Paul	1569
Zimmer, John	1485
Muir, Josh	1469
Beneker, Gerrit	1380
Albany, Ethan	1100
Nowiski, Adam	969
Best, Don	890
Best, Liam	705
Allen, Carson	700

USCF Ratings as of 9/25/17

Name	Rating
Gregg, Alan	1948
West, Tony	1896
Rutkofske, Lon	1839
Morabito, Matt	1825
Lahr, Frederick	1800
Webb, Austin	1723P12
Jones, G. Avery	1603
Wingrove, Bill	1616
Roome, Eric	1546
Bedy, Noel	1541
Muir, Joshua	1469P

PHCC Speed Ratings as of 9/25/17

Name	Rating
Gregg, Alan	1968
Roome, Eric	1916
Urick, Ryan	1847
West, Tony	1815
Lahr, Frederick	1812
Rutkofske, Lon	1797
Morabito, Matt	1794
Jones, G. Avery	1587
Webb, Austin	1562
Wingrove, Bill	1548
Oriel, Paul	1500
Bedy, Noel	1529
Zimmer, John	1485
Nowiski, Adam	1364
Beneker, Gerrit	1287
Muir, Josh	1261
Albany, Ethan	1100
Best, Don	890
Best, Liam	705
Allen, Carson	700

Calendar of Events: [Note the change for the First Thursday of Each Month](#)

First Thursday of Each Month - Chess Clinics- 6:30 to 7:00 PM - \$7.50 per person. From 7:00 until 10:00. Players wishing to play Challenge matches with longer time controls of G/60 with 5 sec delay can choose to play match games if they so desire. Participants will be required to follow the rules and regulations for **Challenge Play** (As outlined in Chess Chatter, our website under "Club Member Ratings Lists", or posted at the club.) and colors will be selected by lot. PHCC club ratings will be used. Players should turn their game scores into Lon, so he can adjust ratings appropriately and showcase the games in *Chess Chatter*.

2017 Events Schedule:

October 19 **Handicap Speed Tournament G/5**

EF: \$5.00 A/\$2.50 Jr. PHCC membership required. Tournament begins at 7:00 PM, but register with Lon before if possible. A minimum of 4 players required. Prizes based on entries. Speed Ratings will be used for pairing. G/ based on the following schedule:***This tournament is a warm-up for the October 26th PHCC Speed Championships. It handicaps higher rated players by assessing them less time than their opponents according the following formula: A. Difference in rating 100 points or less - no time penalty -5 minutes each; B. Difference in the rating of between 101-200, lower rated player gets 5 minutes, higher rated gets only 4 minutes; C. Difference in the rating of greater than 200 points, lower rated player gets 6 minutes, higher rated gets 4 minutes.***

October 26 - **PHCC SPEED CHAMPIONSHIPS**

The Port Huron Chess Club's 36th Annual Speed Championship Tournament will be held on Thursday, October 26th beginning at 7:00 PM. Registrations will determine the number of rounds and prizes. PHCC membership required. Entry fee will be \$5.00 for adults/\$2.50 for juniors. Please contact Lon if you plan to play. There will be no registrations on-site. If you intend to play, contact Lon before October 26th.

Nov. 16 **18th Duncan Memorial Turkey Gobbler Tournament**

December **No tournaments**

Dues News:

While dues are not required for anyone interested in playing at the club, they are required for those competing in tournament play. Annual Dues are \$20.00 for adults and \$10.00 for those under 19. Dues funds are used to offset miscellaneous expenses not funded by the Recreation Department. United States Chess Federation memberships are available through the club.