



Chess Chatter

Newsletter of the Port Huron Chess Club

Editor: Lon Rutkofske November 2018 Vol.37 Number 9

The **Port Huron Chess Club** meets Thursdays, except holidays, from 6:30-10:00 PM, at Palmer Park Recreation Center, 2829 Armour Street, (NE corner of Garfield Street and Gratiot Ave...1 mile North of the Blue Water Bridge) Port Huron, Michigan. Everyone is welcome. All equipment provided. Email: PtHuronChessClub@aol.com or Website: <http://porthuronchessclub.volasite.com>

Rutkofske Wins 2018 PHCC Speed Championship Title

After dropping his queen along with the first game to **Alan Gregg**, Lon rattled off 9 consecutive victories to secure his 15th PHCC Speed Championship crown. In a rather ironic turnaround, it was Lon that suddenly became the fortunate beneficiary of several “gift pieces” from stunned opponents, the majority of which had him on the ropes in several instances. Probably the most stunning pair of wins was claimed by **Josh Muir**, who took two points from Alan Gregg, and received hardy congratulations from Lon. Alan muddled through the pack to claim the runner up position in the top section and **Noel Bedy** became the first ever PHCC Reserve Champion.

This was also the first USCF rated speed championship because all of the participants were active USCF members, four of which (except Avery and Alan) notched their first official blitz/quick rating.



Lon Rutkofske

Alan Gregg

Noel Bedy

2018 PHCC Speed Champs -- Standings

#	Name	ID	Rtng	Rd 1	Rd 2	Rd 3	Rd 4	Rd 5	Tot
1	Alan Gregg	12824548	2003	LL6	WW2	WL3	WW4	WL5	6.0
2	George Jones	12577178	1212	LL5	LL1	LL6	LL3	LL4	0.0
3	Lonnie Rutkofske	10288347	unr.	WW4	WW5	WL1	WW2	WW6	9.0
4	Matthew Morabito	12577179	unr.	LL3	WL6	WW5	LL1	WW2	5.0
5	Noel Bedy	12626193	unr.	WW2	LL3	LL4	WW6	WL1	5.0
6	Joshua Muir	16403982	unr.	WW1	WL4	WW2	LL5	LL3	5.0

Diane Rutkofske to offer new embroidered 50th Anniversary PHCC logo shirts for 2019!

Diane Rutkofske, obviously Lon's talented, better half, is quick to get on the 50th anniversary bandwagon with a special deal! She plans to offer interested PHCC members embroidered polo shirts with a new 50th anniversary logo for the coming year. You have probably seen some of her wonderful work on shirts worn by many members of our club, and we already have orders from **Avery Jones**, **Bill Wingrove**, **Noel Bedy**, and of course, Lon for this 2019 version.

The embroidery fee will be around \$15 (*...less than the going market rate for embroidered designs.*), but if Diane can purchase appropriate, quality polo shirts (long or short sleeve) in a variety of colors at a reasonable rate (\$15-\$20) that will of course be added to the total purchase price. Shown below is the new logo design, but with the new version thread colors may vary, dependent on the color of the shirt (See choices below.)! Let Lon know if you are interested in ordering a shirt!



Rules & Regulations of Play for the 2019 PHCC Championships:

The following general rules and regulations of play will govern participation in this year's tournament. All participants should be familiar with these rules and any special rules that govern their play.

General Rules:

1. All play will be governed by the official rules of chess as established by the FIDE and USCF as given in the most current edition of the *Official Rules of Chess* published by the USCF.
2. Touch rules will be in effect in all games. Both players must record the moves of the game and submit properly completed score sheets to the tournament director (TD) as soon as possible following the completion of the game. Illegal moves cannot be considered without accurate score sheets.
3. A chess timer (clock) must be used in all games. Time controls will be at the rate of "Game in 90 minutes with 5 second delay (1 and ½ hours plus 5/sec delay) per player. Mechanical clock time control will be game in 95 minutes and the clock will be set at 4:25. Prior to the beginning of the game both players are responsible for checking the clock to determine if it is functioning properly and set correctly. Sets and clocks can be checked out at the club, should players need to use club equipment. Players are responsible for correctly setting their clocks.
4. Only USCF and PHCC club members may participate in these events. Dues are payable to Lon Rutkofske.
5. Winners, or the player having the white pieces in the case of a draw, must report the results to the TD.
6. Disputes arising from play and unresolved by the players shall be submitted to the TD. His decision will be final. This year's TD will be Lon Rutkofske: 605 Lomasney Ln., Marysville, MI 48040 Ph. 810-388-9219 (Please leave a message with call back number) or email at ishking@aol.com.

Special Rules:

1. This year's event will feature a 5 round, Swiss System tournament taking place through the week of January 17th thru 20th, 2019. All games must be played at Palmer Park Recreation Center. A half-point bye may be requested prior to the commencement of play for the first round by contacting the T.D.
2. All games will be USCF and PHCC rated.
3. Rounds and Pairings: **The first round of play will begin at 7:00 pm at the PHCC on Thursday, January 17, 2019**; Rounds 2 and 3 on January 19th, and rounds 4 and 5 on Sunday, January 20th, 2019. Saturday and Sunday games will begin at 10:00 am and 3 pm respectively.
4. **Weather issues:** If the Port Huron Area School District is closed due to inclement weather, PHCC will be cancelled as well. **In the event of cancellation, the entire event will be moved to the following week beginning on Thursday, January 24th, and then on Saturday and Sunday, January 26th and 27th, 2019.** Please call or email Lon if you have questions before proceeding to the club. Lon will post information on the website and email participants as soon as conditions are posted.
5. A bulletin of completed games and results will be circulated within a week following the tournament. Please make sure that your score sheets are complete and accurate. Both players should submit completed score sheets.
6. Ties will be broken using the following methods in order: Median/Harkness; Solkoff; and Cumulative.
7. Prizes: All awards/prizes will be presented Sunday, January 20, 2019.

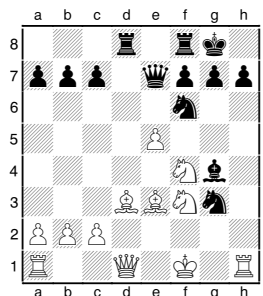
8. **Pre-Registration:** Begins December 1, 2018 and will continue through January 16, 2019. Entry Fees: Adult: \$10:00 Under 19: \$5.00 Onsite registration will require a \$10 additional fee. Contact TD Lon Rutkofske.
9. Awards based on 10 entries will be:
 1st Place - \$50 + Plaque ; 2nd Place - \$30 + Plaque;
 Top Under 1700 = \$20 + Plaque
 Biggest Upset - \$10

Members' Games



Please send me what you consider your best games, annotated or not, so that I might be able to showcase them. The following games represent contests that have been available at the time of this printing. Email them to me or give them to me personally, if you wish. Majority of analyses is done by Fritz 12, unless otherwise indicated. (Since there have been no current member games to report on for this issue, I am showcasing several **Chris Eagle** contests from previous issues of **Chess Chatter**. Chris traveled from Sandusky to the PHCC on many a Thursday evening prior to his leaving high school for college. The selections below represent a panoramic progression of his OTB achievements.)

Chris Eagle played in tournaments from 1980 to 1996, with many top-10 finishes in the Michigan Open, Motor City Open, and Michigan Masters-Experts. He retired from tournament play with a USCF rating of 2146. Chris' chess highlights include winning the 1995 U.S. Amateur championship, tying for first at the 1991 USCF Region V championship, and beating GM Arthur Bisguier at the 1992 U.S. Open. Chris still follows chess, plays on chess.com, and occasionally coaches. To help with annotations, he uses Chessbase and Stockfish.



17.Kg2 Nfe4 18.Qg1 Qb4
 19.Bc5 Bxf3+ 20.Kxf3 Qa4
 21.b3 Qc6 22.Bxf8 Ng5+
 23.Kxg3 Qf3+ 24.Kh4 Qxf4+
 25.Qg4 Nf3+ 26.Kh3 Ng5+
 27.Kh4 Qxe5 28.Bxg7 Nf3+
 29.Qxf3 Rd4+ 30.Kh3 Kxg7
 [Black loses on time.]1-0

Bergman,Howard -
 Eagle,Christopher [A02]
Bird's Opening
 1980 PHCC Championships
 B Section Port Huron (2),
 10.04.1980
 1.f4 Nf6 2.g3 e5 3.fxe5 Nh5
 4.Nf3 d6 5.Bg2 dxe5 6.Nxe5
 Bc5 7.e3 Qg5 8.d4 Nxg3
 9.Qf3 0-0 10.Qxg3 Qxg3+
 11.hxg3 Bd6 12.Rh3??
 Bxh3 13.Bxh3 f6 14.Be6+
 Kh8 15.Nf7+ Rxf7 16.Bxf7
 Bxg3+ 17.Kd1 g5 18.Nc3
 Kg7 19.Be6 h5 20.Ne4 Bh2

Eagle,Christopher -
 Lockhart,Gerald [C34]
King's Gambit Accepted
 1980 PHCC Championships
 B Section Port Huron (1),
 03.04.1980
 1.e4 e5 2.f4 exf4 3.Nf3 d6
 4.Nc3 Bg4 5.d4 Be7 6.Bc4
 Bh4+ 7.Kf1 Nf6 8.Bxf4 Nh5
 9.Be3 0-0 10.Nd5 Nd7
 11.Nf4 Qe7 12.Bd3 Ndf6
 13.e5 dxe5 14.dxe5 Rad8
 15.g3 Bxg3 16.hxg3 Nxg3+

21.Kd2 Nc6 22.c3 Re8
 23.d5 Nd8 24.Bf5 Re5
 25.d6 Rxf5 26.dxc7 Bxc7
 27.b3 Re5 28.Nf2 f5 29.Nd3
 Re8 30.Ke2 g4 31.Bd2 f4
 32.Rg1 fxe3 33.Bxe3 Bb6
 34.Rg3 Rxe3+ 35.Rxe3
 Bxe3 36.Kxe3 Kf6 37.Kf4
 Ne6+ 38.Kg3 Kg5 39.Nf2
 h4+ 40.Kg2 Nf4+ 41.Kf1 h3
 42.Ne4+ Kh4 43.Kg1 g3
 44.Nxg3 Kxg3 45.a4 h2+
 46.Kh1 Nd3 0-1

Eagle,Christopher -
 Angeletti,Gerald [A40]
Unusual QP Game 1980
 PHCC Championships B
 Section Port Huron (3),
 17.04.1980
 1.c4 g6 2.Nc3 Bg7 3.d4 c6
 4.e4 e6 5.c5 b6 6.Nf3 Ne7
 7.Bd3 0-0 8.Be3 d5 9.cxd6
 Qxd6 10.Qd2 a5 11.Bh6
 Na6 12.e5 Qd8 13.Qf4 Nb4
 14.0-0-0 Ned5 15.Nxd5
 Nxd3+ 16.Rxd3 cxd5
 17.Bxg7 Kxg7 18.Ng5 Ba6
 19.Rh3 Rc8+ 20.Kb1
 Bd3+?? 21.Rxd3 h6 22.Nf3
 f6 23.Rc1 fxe5 24.Rxc8
 Qxc8 25.Qxe5+ Kh7 26.Rc3
 Qe8 27.Rc7+ Rf7 28.h4 Kg8
 29.g4 Qb5 30.Rc8+ Rf8
 31.Qxe6+ Kg7 32.Rc7+ Kh8
 33.Qe5+ 1-0

Wood, Peter -

Eagle, Christopher [A07]

King's Indian Attack

Challenge Game Port Huron
Chess Club, 10.09.1981

[Pete Wood]

Pete Wood was a regular contributor and editor of our club newsletter for many years and annotated a lively column called "Just Jiv'in" often comical and satirical, humorously poking fun at club members. He also was published in the Michigan Chess Association Magazine. He unfortunately passed away by his own hand at a very young age. I chose this game because it demonstrates his wit and chess sense as well! - Lon Rutkofske - Port Huron Chess Club

1.Nf3 Nc6 2.g3 e5 3.d3 d5 4.Bg2 Bc5 5.0-0 Bd7 6.Nbd2 h5 7.e4 Nf6 8.exd5 [Silly Pawn-grabber me! I thought I could win this pawn, but overlooked Black's 10th move!] **8...Nxd5 9.Nxe5 Nxe5 10.Bxd5 Bg4 11.Bf3 Nxf3+ 12.Nxf3 Qd5 13.Re1+ Be7** [Chris thought this move was wrong, but I was going to answer any K-move with Re5!] **14.Qe2 0-0-0 15.Qxe7 Qxf3** [The Eagle slew the great white Knight and boldly announced mate in two!! He then signed his score sheet and circled himself the winner!! Great Bluffer, that Eagle!] **16.Bf4 Rd7 17.Qe4 h4 18.Qxf3 Bxf3 19.Re3 Bd5 20.b3 f6** [No thank you! I've met Mr. Noah (As in the Noah's Ark Trap with g5!) He kidnaps clergymen and usually holds them for ransom. One or two foot soldiers are his usual asking price, but after you pay, he never gives you your bishop back! Must be an atheist!?] **21.Re2 Bf3 22.Re3 Bd5 23.Re2 g5 24.Bd2 hxg3 25.fxg3 Rdh7 26.Bc3 Rh6 27.Rf1 Rh3 28.Bxf6 R8h5 29.Rf5 Bc6 30.Rxg5 Rh6 31.Rg8+ 1-0**

Saucer (1879) -

Eagle, Christopher [B25]

Sicilian Defense Closed

1982 World Open
Philadelphia, 04.07.1982

[Chris Eagle]

1.Nf3 c5 2.g3 g6 3.Bg2 Bg7 4.d3 Nf6 5.e4 d6 6.0-0 0-0 7.Nc3 Nc6 8.h3 Bd7 9.Be3 Rb8 10.Qd2 b5 11.Ne2 a5 12.c3 Qc8 [This game is an excellent example of the penalty for not having a plan. While Black's plan is about as simple as can be - attack on the queen's side, White has not plan at all. The result is that after only twelve moves not only has Black equalize but he's gained the initiative as well.] **13.Kh2 c4 14.Ne1 cxd3 15.Nxd3 Ne8 16.Rac1 Ne5 17.Nxe5 Bxe5 18.f4 Bg7 19.g4** [White's K-pawn has become very weak. He should have used his last move to activate his pieces so that it could be protected.] **19...Qb7** [The buildup begins!] **20.Bd4** [This may be the losing move, letting Black strike at White's center with tempo.] **20...e5 21.Be3 Bc6 22.Ng3 Nf6 23.Qc2 d5** [Obtaining a passed pawn.] **24.fxe5 Nxe4 25.Nxe4 dxe4 26.Bf4 Rfe8** [This move is inferior to QRe8, but I played it convinced that White would push his K-pawn leaving me with a passed pawn in the center with a rook behind it. Hopefully enough to with the game!] **27.e6 Rbc8** [It is important to keep the bishop protected.] **28.exf7+ Qxf7 29.Rce1 Qxa2 30.Ra1 Qc4 31.Rxa5 e3 32.Bg3 e2 33.Re1 Bxg2 34.Kxg2 Qd5+ 35.Kh2!** [All other moves lose...35.Kg1 to 35...Re3 followed by Qf3!; and 35.Kf2...with Bd4! winning the White Queen.] **35...Qf3 36.Raa1 Re3 37.Rg1!** [Resigns. White runs out of checks after:] **37...Be5!** [Resigns. White runs out of checks after:] **38.Qb3+ Kf8 39.Qb4+ Kf7 40.Qb3+ Ke7 41.Qb4+ Ke6 42.Qb3+ Kd6 43.Qb4+ Rc5 44.Ra6+ Kd5 45.Qb3+ Ke4 46.Qc2+ Rd3 47.Ra4+ Rc4 0-1**

Eagle, Christopher (1761) -

Gillion, Timothy (1819)

[B01] 1987 PHCC Closed

Championships (3),
19.03.1987

1.e4 d5 2.exd5 Nf6 3.d4 Nxd5 4.c4 Nb6 5.Nf3 g6 6.Nc3 Bg7 7.c5 Nd5 8.Bc4 c6 9.Qb3 e6 10.0-0 0-0 11.Ne4 Nd7 12.Bxd5 cxd5 13.Ng3 Qc7 14.h4 b6 15.Be3 bxc5 16.dxc5 Ne5 17.Nxe5 Qxe5 18.Rab1 Qc7 19.Qd1 Bb7 20.b4 d4 21.Bd2 Bd5 22.a4 e5 23.b5 e4 24.c6 e3 25.Bxe3 dxe3 26.Qxd5 exf2+ 27.Kh2 Rad8 28.Qf3 Rd4 29.Rxf2 Rxh4+ 30.Kg1 Bd4 31.a5 Rf4 32.Qd5 Bxf2+ 33.Kf1 Bxg3+ 34.Kg1 Bf2+ 35.Kf1 Bb6+ 0-1

Eagle, Christopher (2116) -

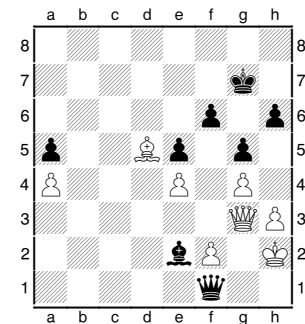
Bisguier, Arthur GM (2490)

[E04] Catalan

1992 U. S Open

Championships Dearborn, MI
(3), 04.08.1992

1.d4 d5 2.c4 e6 3.Nf3 Nf6 4.g3 dxc4 5.Bg2 Nbd7 6.0-0 c5 7.Nbd2 Nb6 8.Nxc4 cxd4 9.Nxb6 Qxb6 10.Nxd4 Be7 11.Nb3 0-0 12.e4 Rd8 13.Qe2 e5 14.Be3 Qb4 15.Bd2 Qa4 16.Rfc1 b6 17.Bc3 Ba6 18.Qe1 Nd7 19.Nd2 Nc5 20.Qd1 Qe8 21.Qf3 Na4 22.Bf1 Bb7 23.Nc4 Nxc3 24.Rxc3 Bb4 25.Rd3 Rxd3 26.Bxd3 Rd8 27.Rd1 Bc5 28.Ne3 Bxe3 29.Qxe3 Qa4 30.Rc1 h6 31.Bc4 Rd1+ 32.Rxd1 Qxd1+ 33.Kg2 Qb1 34.Bd5 Ba6 35.h3 Qf1+ 36.Kh2 Be2 37.b4 g5 38.g4 Kg7 39.Qg3 f6 40.a4 a5 41.bxa5 bxa5



42.Qe3 h5 43.Qa7+ Kh6 44.Bg8 1-0

The 18th Bob Duncan's Turkey Gobbler Tournament Rules

- Rounds 1 & 2 The first two rounds consist of three chess problems of varying value and degree of difficulty. Participants will submit solutions for no more than two problems. The higher the point value, the more demanding the problem. These problems are to be worked out throughout the duration of the tournament in between games, but solutions need to be submitted before 9:45 pm. Only one set of solutions may be submitted for score per contestant.
- Round 3 Handicap Double Round Robin Blitz Style G/5 match where the lower rated player gets a time advantage of up to two minutes based on the spread in ratings as follows: if the difference in ratings is greater than 100 points the higher rated player has only 4 minutes to 5 minutes. If the ratings spread is greater than 200 points, the higher rated player gets 4 minutes to the lower rated player's 6 minutes. Players play a pair of games alternating color in each. Pairings are selected by Crenshaw-Berger Round Robin Pairings table.
- Round 4-6 A three round tournament within a tournament where pairings are selected by random draw, and players have a chance of playing the same player more than a single time. Playing both the Black and White pieces, contestants draw cards that feature a selection of unusual/bizarre openings, most beginning 7-10 moves into the game. Time limit for these games is G/10.
- Round 7 G/10 : One game Fischer Random Chess – Colors, piece positions and participants selected by Lot!

Quick Rules for Fischerandom Chess

- I. Fischerandom Chess is played with a normal chess board and pieces. All rules of Orthodox Chess apply except as otherwise noted.
- II. The initial configuration of the chess pieces is determined randomly for White, and the black pieces are placed equal and opposite the white pieces. The piece placement is subject to the constraints:
 - a. the king is placed somewhere between the two rooks, and
 - b. the bishops are on opposite colors.
 - c. pawns are placed on each player's second rank as in Orthodox Chess.

There are 960 such configurations.

- III. Castling, as in Orthodox chess, is an exceptional move involving both the King and Rook. Castling is a valid move under these circumstances:
 - a. Neither King nor Rook has moved.
 - b. The King is not in check before or after castling.
 - c. All squares between the castling King's initial and final squares (including the final square), and all of the squares between the castling Rook's initial and final squares (including the final square), must be vacant except for the King and Rook.
 - d. No square through which the King moves is under enemy attack.

The movement of the King and Rook during castling should be easily understood by players of Orthodox Chess:

- e. When castling on the h-side (White's right side), the King ends on g1 (g8), and the rook on f1 (f8), just like the O-O move in Orthodox chess.
 - f. When castling on the a-side (White's left side), the King ends on c1 (c8), and the rook on d1 (d8), just like the O-O-O move in Orthodox chess.
 - g. Sometimes the King will not need to move; sometimes the Rook will not need to move. That's OK.
- IV. The object is to checkmate the opponent's King. Have fun!



Dues News:

While dues are not required for anyone interested in playing at the club, they are required for those competing in tournament play. Annual Dues are \$20.00 for adults and \$10.00 for those under 19. Dues funds are used to offset miscellaneous expenses not funded by the Recreation Department. United States Chess Federation memberships are available through the club. (**Membership expirations: Morris, Jason: November, 2018**)

Calendar of Events:

First Thursday of Each Month - Chess Clinics- 6:30 to 7:00 PM - \$7.50 per person. From 7:00 until 10:00. Players wishing to play Challenge matches with longer time controls of G/60 with 5 sec delay can choose to play match games if they so desire. Participants will be required to follow the rules and regulations for **Challenge Play** (As outlined in Chess Chatter, our website under "Club Member Ratings Lists", or posted at the club.) and colors will be selected by lot. PHCC club ratings will be used. Players should turn their game scores into Lon, so he can adjust ratings appropriately and showcase the games in *Chess Chatter*. **Monthly Tournaments** will be held, usually on the third Thursday of the month, See the events schedule below for specifics!

2018 Events Schedule:

November 15th – Duncan’s 18th Turkey Gobbler Tournament “fun tournament”: 6 rounds – featuring handicap speed, fixed positions, pre-selected openings, problem solving, G/15 events. EF\$ 5.00, prizes based on entries; Plaque for over-all champion: class prizes for each section (A fun event created by Bob Duncan in 1980.) ! A minimum of 4 participants will be necessary to hold the event. Please contact Lon via phone or email if you plan to register. Play begins at 7:00 PM.

December – NO TOURNAMENTS

2019 Events Schedule:

New timeline for the 2019 PHCC Championships in the works for 50th anniversary celebration- Please note date changes. – RULES AND DETAILS WILL BE RELEASED WITH THE DECEMBER EDITION OF CHESS CHATTER

Tournament Director, **Lon Rutkofske** has been working with Port Huron Recreation Department supervisor, **Amanda Dickinson** to ring in the new year with a completely new calendar format to kick off the PHCC’s 50th anniversary celebration.

In an effort to resolve the typical concerns revolving around a winter schedule for the customary PHCC Championships beginning in January, this year’s plan aims to resolve this by hosting the event in a 5 round Swiss format, to be held on a single weekend beginning with the **first round slated for 7:00pm. on Thursday, January 17th and the final four rounds (two each day with rounds at 10:00 a.m. and 3:00 p.m.) on January 19th and 20th.** The entire tournament will be held at our Palmer Park site and conclude with the awards ceremony following the completion of the final round on January 20th. Amanda’s recommendation of reserving the following weekend (January 26-27) as a back-up is a testament to the continued willing support of the PH Recreation Department.

PHCC Rating Lists

The following list represents only current members of the Port Huron Chess Club. Current USCF ratings were used for members that had them, in order to establish the initial club rating list. The USCF rating format is used as the basis for calculating our club rating list. Members that had no USCF ratings are given a provisional rating based on their performances against regular club members who had USCF ratings. Club rated events will use these ratings for pairing purposes.

PHCC Ratings as of 10/26/18

<u>Name</u>	<u>Rating</u>
Morris, Jason	2041
Gregg, Alan	1987
Rutkofske, Lon	1884
Wilkinson, Stu	1852
Morabito, Matt	1825
Jones, G. Avery	1778
Broyles, Tom	1692
Wingrove, Bill	1646
Muir, Josh	1610
Boucher, Dave	1565
Bedy, Noel	1590
Scholfield, Chris	1503
Beneker, Gerrit	1380
Claunch, Jackson	1325
Carey, Jay	1000
Kovatch, Eric	1000
Kovatch, Daniela	1000
Pirouz, Niko	997

PHCC Blitz Ratings as of 10/26/18

<u>Name</u>	<u>Rating</u>
Morris, Jason	2070
Wilkinson, Stu	1929
Gregg, Alan	1918
Rutkofske, Lon	1911
Morabito, Matt	1755
Broyles, Tom	1708
Muir, Josh	1671
Bedy, Noel	1643
Scholfield, Chris	1552
Wingrove, Bill	1531
Jones, G. Avery	1408
Claunch, Jackson	1312
Beneker, Gerrit	1268
Carey, Jay	1000
Pirouz, Niko	827
Kovatch, Eric	700
Kovatch, Daniela	500

USCF Ratings as of 10/26/18

<u>Name</u>	<u>Rating</u>
Morris, Jason	2041
Gregg, Alan	1964
Wilkinson, Stu	1830
Rutkofske, Lon	1828
Morabito, Matt	1762
Jones, G. Avery	1716
Broyles, Tom	1699
Wingrove, Bill	1627
Muir, Joshua	1548P17
Bedy, Noel	1516
Boucher, Dave	1406
Claunch, Jackson	1325
Pirouz, Niko	974
Kovatch, Eric	Unr
Kovatch, Daniela	Unr

USCF Quick/Action Ratings as of 10/26/18

<u>Name</u>	<u>Rating</u>
Morris, Jason	2072
Morabito, Matt	1898/P14
Gregg, Alan	1873
Rutkofske, Lon	1800/P19
Wilkinson, Stu	1782/P16
Muir, Josh	1655/P22
Bedy, Noel	1511/P19
Jones, Avery	1522
Wingrove, Bill	1465/P21
Claunch, Jackson	1312
Beneker, Gerrit	1169/P11
Pirouz, Niko	806
Kovatch, Eric	508/P8
Kovatch, Daniela	139/2

USCF Blitz Ratings as of 10/26/18

<u>Name</u>	<u>Rating</u>
Gregg, Alan	1935
Rutkofske, Lon	1932
Morabito, Matt	1727
Muir, Josh	1617
Bedy, Noel	1606
Jones, G. Avery	1200