



Chess Chatter

Newsletter of the Port Huron Chess Club

Editor: Lon Rutkofske September 2010 Vol.29. Number 9

The **Port Huron Chess Club** meets Thursdays, except holidays, from 6:30-10:00 PM, at Palmer Park Recreation Center, 2829 Armour Street, (NE corner of Garfield Street and Gratiot Ave...1 mile North of the Blue Water Bridge) Port Huron, Michigan. Everyone is welcome. All equipment provided. Website: <http://porthuronchessclub.volasite.com/>

What I did on my summer vacation!

The Mall of America, with all its allure and majesty was not the high point of my recent trip to Minneapolis, unlike the avid shoppers who crowded its four-tiered walkways. Rather it was a lure of the **Chess Castle** one sultry Tuesday evening that beckoned to me with the apparition of a lively, entertaining evening of hot chess competition transcending the risk of the ominous summer thunderstorm threatening the Twin Cities area.

Located in a refurbished office complex, next to the Minneapolis School District's Adult Learning Center on Jackson Street, the **Chess Castle** offers members a bright, fully equipped setting, packed with a weekly schedule of events: Mondays' feature action quads, Tuesdays' are reserved for casual play, Thursdays' provide 4 or 5 round G/120 tournaments played at a pace of one game per week. The **Chess Castle** provides chess enthusiasts a wide range of rated weekend events as well.

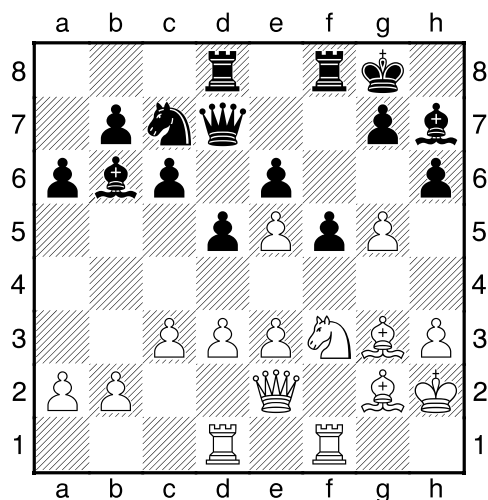
I had an opportunity to square off against Bob Tenney, obviously a long time, involved and proud club member, in few intense ten-minute games. Although I dropped the first game, I managed to win the remaining games of our 5 game , interstate mini-match. Bob was a gracious host, sort of like our own Phil Willard, and represent his club well, again, like Phil, playing the role of goodwill ambassador as well as the club's unofficial measuring stick. I also managed to play a number of G/5 contests with another gentleman, whose name I cannot recall, but unfortunately in a reversal of fortune a less-than-stellar performance left me on the short end of that 5 game "set".

I met Dan Voje, club president, and Jiten Patel, tournament organizer/director, both of whom were inviting and cordial, mirroring the atmosphere in the club. The game to follow is the only contest I recorded with my new Monroi PCA, but I thoroughly enjoyed my visit. If you plan to visit the Twin Cities area, this is a must stop for a chess player. Check out the club website at: <http://chesscastle.com/> ,it lends some valuable insights into the struggles experienced by fellow chess clubs outside the Great Lakes State.

Rutkofske,Lonnie - Tenney,Robert [A03] Bird's Opening

Casual Game/10 - Chess Castle CC, Minneapolis,MN - 27.07.2010

1.f4 d5 2.Nf3 Bf5 3.g3 Nf6 4.Bg2 Nc6 5.d3 e6 6.e3 Bb4+ 7.Nbd2 h6 8.0-0 0-0 9.h3 Qd7 10.Ne5 Nxe5 11.fxe5 Ne8 12.Nf3 c6 13.g4 Bh7 14.Qe2 Nc7 15.c3 Ba5 16.Bd2 Rad8 17.Be1 f6 18.Bg3 Bb6 19.Kh2 a6 20.Rad1 f5 21.g5 Diagram



White Lost on time! 0-1

PHCC Champions' Plaque to be displayed at Palmer Park

Club Champions and Speed Champions will be “immortalized” with the installation of a plaque listing their names and championship year(s) at Palmer Park Recreation Center. Recreation Director, **Nancy Winzer**, graciously agreed to fund the project which not only identifies these club champions, but recognizes the PHCC as the longest continuously running club organization in **Port Huron Recreation Department** history. The plaque, which replaces our outdated loving cup trophy usually secreted away in the club equipment closet, should be mounted sometime next month, and will provide some well deserved recognition, and permits additional space for future champions presently limited by the former championship trophy. Our hats are again off to the PH Recreation Department for the wonderful support it provides the PHCC!

A PHCC Partnership on the horizon with MCA and West MI Chess?

Through **Alan Gregg**, I have had the distinct pleasure of making the acquaintance of **Andy Catlin**, one of the major contributors to **West Michigan Chess** and to the Michigan Chess Association in terms of articles and guidance to **Michigan Chess**, as well as actively serving as a board member and chess promoter throughout Michigan. Andy was gracious enough to spend time teaching me, via my first internet conference, the finer points of using PGN files, creating and saving databases, and working on websites. Andy was extremely patient with me, and I am still a novice at putting his

lessons fully into our newsletter, but I hope that “practice” will eventually make “perfect”, so bear with me everyone.

In his capacity as an official of the MCA, Andy put me in contact with the new MC Editor, **Scott Faust**, introduced me to **Tony Palmer**, annotator extraordinaire and chief “proofer and puzzler” for both MCA and **West Michigan Chess**, and even suggested an internet match between a triumvirate from the PHCC and a corresponding set of “Three Amigos” from western Michigan. He was also kind enough to put a link to our PHCC website on the West Michigan Chess site.

This looks like it could be an opportunity for the PHCC to become more involved in the MCA and chess within the state. We hope that our club members will avail themselves of the host of options that this fledgling relationship has created. I will keep you posted on plans for the internet match. If you are interested, please email or call me. If interest runs rampant, who knows how many players might be able to participate in such a match!??

PHCC Rating List

The following list represents a realignment and update after the Club Championships. It identifies only current members of the Port Huron Chess Club. Current USCF ratings were used for members that had them, to construct the initial list. Members that had no USCF ratings were given a provisional rating based on their performances against regular club members who had USCF ratings. From this point forward, club rated events will use these ratings for pairing purposes.

PHCC Rating List as of 8/17/10

<u>Name</u>	<u>Rating</u>
Gregg, Alan	1939
Rutkofske, Lon	1905
Morabito, Matt	1760
Petty, Michael	1740
Broyles, Tom	1736
Fiedler, Robert	1725
Wingrove, Bill	1707
Duncan, Bob	1595
Dean, Joel	1560
Berthen, Dale	1537
Scholfield, Chris	1503
Willard, Mark	1500
Willard, Phil	1486
Mark Fitchett	1460
Chan, Jaime	1452
Boucher, Dave	1322
Jachcinski, Michael	1016
Tuttle, Aaron	498

USCF Ratings as of 8/17/10

<u>Name</u>	<u>Rating</u>
Gregg, Alan	2000
Rutkofske, Lon	1897
Fiedler, Robert	1769
Broyles, Tom	1737
Morabito, Matt	1725
Petty, Michael	1703

Wingrove, Bill	1694
Willard, Phil	1551
Duncan, Bob	1497
Chan, Jaime	1447
Trombley, Cody	1278
Boucher, Dave	1277
Mireau, Nathan	1050
Jachcinski, Michael	987

Members' Games

Please send me what you consider your best games, annotated or not, so that I might be able to showcase them. The following games represent contests that have been available at the time of this printing. Email them to me or give them to me personally, if you wish. Majority of analysis done by Fritz 12, unless otherwise indicated.

The following games are the remainder of **Alan Gregg's** games from the 2010 Canadian Open Championships. As I perused some of the back issues of **Chess Chatter**, I came across the name of **Tom LaForge**. He won a 30-30 tournament held at the club way back in 1973, and I have decided to reprise a couple of his games for this issue. Tom drove all the way from Sterling Heights at that time to play and become a member of our club. He went on to become very active in tournament chess, elevating his play to the expert level. Tom has always been a fierce competitor and worthy adversary, but even more exemplary was his perspective on chess and life in general. A real gentleman over the chess board, Tom has produced many fine games against top Michigan players well documented in the pages of **Michigan Chess** and other publications. Tom and I have share a common passion for the French Defense, although he is just better than I am. Some say that it is better to be lucky than good. In the Tom's games featured below, he seems to have both!!! I trust you will enjoy these games from the archives.

Lai,J (1727) - Gregg,Alan (2000) [B95]

Canadian Open (4), 13.07.2010[Gregg,Alan]

1.e4 c5 2.Nf3 d6 3.d4 cxd4 4.Nxd4 Nf6 5.Nc3 a6 6.Bg5 e6 7.f3 Be7 8.Qd2 Qc7
 9.Be3 Nbd7 10.0-0-0 b5 11.Kb1 Bb7 12.Bxb5 axb5 13.Ndxb5 Qb8 14.Nxd6+ Bxd6
 15.Qxd6 Qxd6 16.Rxd6 Ke7 17.Rd2 Bc6 18.b3 Rhc8 19.Kb2 h6 20.a3 Ke8 21.Rc1
 Rab8 22.Na2 Bb5 23.Nc3 Bc6 24.Na2 Ne5 25.Nb4 g5 26.Nxc6 Rxc6 27.Ka2 Ra6
 28.a4 Nc6 29.Bc5 Nd7 30.Bd6 Rb7 31.c4 Nb6 32.Ka3 Na5 33.Rd3 Naxc4+
 34.Rxc4 Nxc4+ 35.bxc4 Rba7 36.Kb3 Rxa4 37.Kc3 Rd7 38.c5 Ra3+ 39.Kc4 Rxd3
 40.Kxd3 Ra7 41.Ke2 Ra2+ 42.Kf1 f6 43.Kg1 h5 44.Kf1 f5 [44...e5] 45.exf5 exf5
 46.Kg1 Rc2 47.h3 Kd7 48.Kh2 Ke6 49.Kg3 Rc3 50.Kh2 f4 51.h4 Kf5[51...g4
 52.fxg4 hxg4 53.Bxf4] 52.hxg5 Kxg5 53.Be7+ Kf5 54.Bd6 Rc1 55.Be7 h4 56.Bd6 ½-
 ½

Bryant,Yang (1509) - Gregg,Alan (2000) [B90]

Canadian Open (5), 15.07.2010[Gregg,Alan]

1.e4 c5 2.Nf3 d6 3.d4 cxd4 4.Nxd4 Nf6 5.Nc3 a6 6.f3 e5 7.Nb3 Be6 8.Be3 Nbd7
 9.Qd2 b5 10.g4 h6 11.h4 Be7 12.0-0-0 Rc8 13.Kb1 Qc7 14.Bxb5 axb5 15.Nxb5
 Qc4 16.Qd3 Qxd3 17.Rxd3 d5 18.exd5 Nxd5 19.Rhd1 Nxe3 20.Rxe3 0-0 21.h5
 Rb8 22.Nc7 Rb7 23.Nxe6 fxe6 24.Red3 Nc5 25.Nxc5 Bxc5 26.Re1 Rbf7 27.a3

Rxf3 28.Rxe5 Rxd3 29.cxd3 Rf1+ 30.Ka2 Bd4 31.Rxe6 Rf2 32.Re8+ Kf7 33.Rb8 Rg2 34.a4 Rxd3 35.a5 Rg5 36.b4 Rxh5 37.a6 Rd5 38.a7 Bxa7 39.Rb7+ Kf6 40.Rxa7 Rxd3 41.Ra6+ Kf5 42.b5 Rd5 43.Rb6 h5 44.Rb8 h4 [44...Kg4 45.Ka3 h4 46.Ka4 h3 47.Rh8 Kg3 48.b6 Rd7 49.Ka5 g5 50.Ka6 h2 51.b7 Rxb7 52.Kxb7 g4 53.Rh7 Kg2 54.Kc6 h1Q 55.Rxh1 Kxh1] 45.b6 Rb5 46.b7 Kg6 [46...Kg4 47.Rh8 Rxb7]47.Rh8 Rxb7 48.Rxh4 Kf5 49.Rh7 Kf6 50.Rh8 g5 51.Rh1 g4 52.Rg1 Kf5 53.Rc1 g3 54.Rc8 Kf4 55.Rf8+ Ke3 56.Rg8 Kf2 57.Rf8+ Kg1 58.Rg8 g2 0-1

Gregg,Alan (2000) - Modoval,S (2242) [E18]

Canadian Open 7), 16.07.2010[Gregg,Alan]

1.d4 Nf6 2.Nf3 e6 3.g3 b6 4.Bg2 Bb7 5.0-0 Be7 6.c4 0-0 7.Nc3 Ne4 8.Nxe4 Bxe4 9.Nh4 Bxg2 10.Nxg2 c5 11.d5 d6 12.Rb1 [12.f4] 12...e5 13.e4 Bf6 14.Be3 Nd7 15.b3 g6 16.h4 h5 17.Qd2 Bg7 18.Bh6 Kh7 19.Bxg7 Kxg7 20.Rbe1 Nf6 21.f3 Qd7 22.Kh2 [22.Ne3] 22...a6 23.a4 b5 24.axb5 axb5 25.Ra1 bxc4 26.bxc4 Ra4 27.Rxa4 [27.Qc2]27...Qxa4 28.Rc1 Rb8 29.Rc2[29.Qc3] 29...Rb1 30.Rc1 Rb3 31.Ne1 Ra3 32.Qd1 Ra2+ 33.Kh3 [33.Kg1] 33...Qa3 34.Nd3 Qa6 35.Qb3 [35.Rc2] 35...Qc8+ 36.g4 hxg4+ 0-1

George,William (2000) - Gregg,Alan (1757) [A86]

Canadian Open (8), 17.07.2010[Gregg,Alan]

1.c4 f5 2.d4 Nf6 3.Nc3 g6 4.g3 Bg7 5.Bg2 c6 6.Bf4 d6 7.Nf3 e6 7...Be6 8.b3 (8.Qd3 h6) 8...h6]8.Qd2 [8.c5] 8...h6 9.h4 Ne4 10.Nxe4 fxe4 11.Nh2 d5 12.Ng4 h5 13.Bg5 [13.Ne5 Bxe5 14.Bxe5 Rh7 15.Qf4 Nd7 16.Bh3 Nxe5 17.Qxe5 Qe7 18.0-0-0] 13...Qc7 14.Nf6+ Kf7 15.Nxe4[15.Bf4 Qe7 16.Bxb8 Bxf6 17.Bf4 b6 18.0-0] 15...dxe4 16.Bxe4 Nd7 17.0-0 Nf8 18.Qd3 Bf6 19.Qf3 Qe7 20.d5 exd5 21.cxd5 Bg4 22.Bxf6 Bxf3 23.Bxe7 Bxe4 24.d6 Nd7 25.f3 Bf5 26.e4 Be6 27.b3 a5 28.Rab1 b5 29.Rfc1 Rhc8 30.Bg5 Ne5 31.Kg2 a4 32.Bd2 axb3 33.axb3 Ra2 34.Rd1 Rca8 35.f4 Nd7 36.f5 gxf5 37.exf5 Bxf5 38.Kg1 Bxb1 39.Bg5 Bf5 0-1

GREGG,Alan (2000) - Song (age 11),Michael (1876) [E17]

Canadian Open (9), 18.07.2010[Gregg,Alan]

1.c4 Nf6 2.g3 e6 3.Bg2 d5 4.b3 Be7 5.Bb2 0-0 6.Nf3 Nbd7 7.0-0 b6 8.d4 Bb7 9.Nc3 c5 10.dxc5 Nxc5 11.cxd5 Nxd5 12.Nxd5 Bxd5 13.Rc1 Bf6 14.Ba3 Be7 15.e3 Rc8 16.Qe2 Qd7 17.Bb2 Rfd8 18.Rfd1 Qb7 19.Ne1 Bxg2 20.Nxg2 Ne4 21.Rxd8+ Rxd8 22.Rd1 Rd7 23.h4 Bf6 24.Bxf6 Nxf6 25.Ne1 Rxd1 26.Qxd1 Qd5 27.Qd3 h6 28.Qxd5 Nxd5 29.Nd3 Kf8 30.Kf1 f6 31.Ke1 Ke7 32.Kd2 Kd6 33.e4 Nc7 34.a4 e5 35.Kc3 Ne6 36.Nb2 Nc5 37.f3 g6 38.b4 Ne6 39.Kd3 Nd4 40.Nc4+ Kc6 41.Nd2 [41.f4 Nf3 42.Ke3 Ne1 43.fxe5 Nc2+ 44.Kd2 Nxb4 45.exf6 Kd7 46.f7 Ke7 47.Ne5 Na6 48.Nxg6+ Kxf7 49.Ne5+ Ke6 50.Nc6 Nc5 51.Ke3 a5 52.Nd4+ Kf6 53.Nf5 Kg6 54.Ne7+ (54.g4 Nxa4 55.Kf4 b5 56.h5+ Kh7 57.e5 Nc5 58.Nd4 b4 59.e6 b3 60.e7 b2 61.e8Q Nd3+ 62.Kf5 b1Q 63.Qg6+ Kh8 64.Qxh6+ Kg8 65.Qe6+ Kh8 66.Kf6 Qf1+ 67.Nf5 (67.Ke7 Qf4 68.Qf6+ Qxf6+ 69.Kxf6 a4 70.Nb5 Nf2 71.g5 Ng4+ 72.Kf5 Ne3+ 73.Ke6 Nc4 74.g6 a3 75.Nxa3 Nxa3 76.Kf7) 67...Qa1+ 68.Kg6) 54...Kh5 55.Nd5] 41...a5 42.bxa5 bxa5 43.Nc4 Nxf3 44.Nxa5+ Kc5 45.Nb7+ Kb6 46.Nd6 Kc5 47.Ne8 f5 48.Ke3 Nd4 49.Nf6 g5 50.hxg5 hxg5 51.exf5 Nxf5+ 52.Ke4 Nxg3+ 53.Kxe5 Kb4 54.Ne4 Kxa4 55.Nxg3 Kb4 56.Kf5 Kc4 57.Kxg5 ½-½

Fiedler,Robert - LaForge,Thomas [C00] French Defense

PHCC April 30/30 Tnmt, 29.04.1973

1.e4 e6 2.Nf3 d5 3.Nc3 d4 4.Ne2 Nc6 5.Ng3 e5 6.Bc4 h6 7.0-0 Nf6 8.d3 Bd6 9.Bd2 Be6 10.Nf5 Bxc4 11.Nxd6+ cxd6 12.dxc4 Nxe4 13.Re1 f5 14.c3 dxc3 15.Bxc3 Nxc3 16.bxc3 0-0 17.Qd5+ Kh8 18.Rad1 Rf6 19.c5 dxc5 20.Qxc5 Qe7

21.Qxe7 Nxe7 22.Rxe5 Nc6 23.Re2 Raf8 24.Rd7 R6f7 25.Rxf7 Rxf7 26.Re8+ Kh7
27.Ne5 Nxe5 28.Rxe5 Rc7 29.Rxf5 Rxc3 30.g3 Ra3 31.Rb5 b6 32.Rb2 ½-½

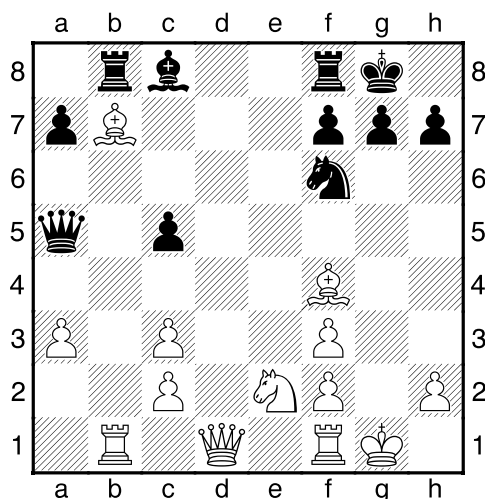
This game features a magnificent double blunder, and Tom escapes with a win!

Cope,Douglas - LaForge,Thomas [C15] French Defense

PHCC April 30/30 Tnmt, 29.04.1973

1.e4 e6 2.d4 d5 3.Nc3 Bb4 4.Bd3 dxe4 5.Bxe4 Nf6 6.Bf3 Nbd7 7.a3 Bxc3+ 8.bxc3 c5
9.Rb1 0-0 10.Ne2 Qa5 11.0-0 e5 12.dxe5 Nxe5 13.Bxb7 Rb8 14.Bf4 Nf3+? 15.gxf3??

Diagram



[Fritz 12: 1) 15.Bxf3!! wins a piece! Rxb1 16.Qxb1 Re8 17.Rd1 h6 18.Qb3 Be6 19.c4 Qa6
20.Ng3 Qxc4 21.Qxc4 Bxc4 22.Bc6 Re6 23.Nf5 Kh7 5.36/17] **15...Rxb7 16.Rxb7 Bxb7 17.Ng3
Qxc3 18.Qd3 Qxd3 19.cxd3 Bxf3 20.Rc1 Rc8 21.Be3 Nd7 22.Kf1 f6 23.Nf5 Kf8 24.Nd6
Rb8 25.Ke1 Rb6 26.Nc4 Rb8 27.Kd2 Ke7 28.Rg1 g6 29.Rg3 Bd5 30.Kc3 Bxc4 31.Kxc4
Rc8 32.Kc3 Ke6 33.h3 g5 34.f3 Ne5 35.f4 gxf4 36.Bxf4 Kf5 37.Bxe5 fxe5 38.Kd2 c4
39.dxc4 Rxc4 40.Rg7 Ra4 0-1**

Calendar of Coming Events:

Registration for all events begins at 6:30 PM or via email, first round begins at 7:00 PM.

- Sept. 9th G/5 Blitz PHCC Speed Champs – Double Round Robin – EF: A: \$2.00, Under19:\$1.00
- Oct. 7th G/30 Boo-dacious Halloween Mini-Swiss - EF: A: \$2.00, Under19:\$1.00
- Nov. 11th Duncan Turkey Gobbler Tournament - EF: A: \$2.00, Under19:\$1.00
- Dec. 9th G/5 -Jingle Bells Double Round Robin - EF: A: \$2.00, Under19:\$1.00

Blasts from the Past

The following photo were taken during was taken after a club tournament at the Adult Activities Center on 7th St. in 1972 or 1973.

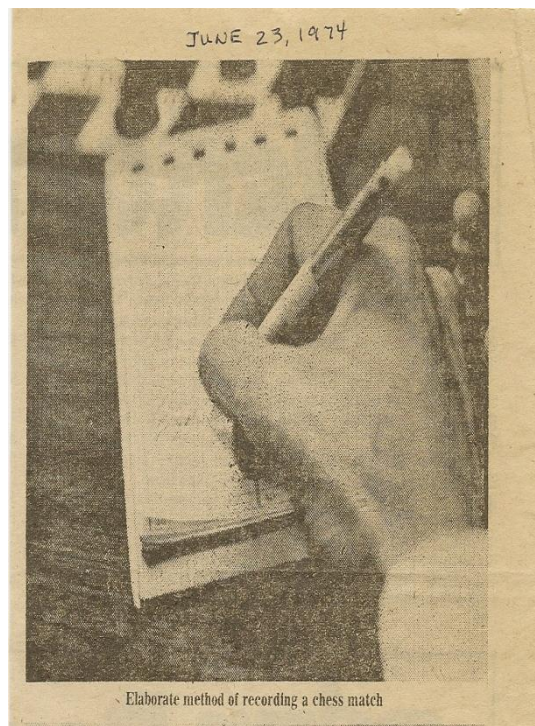


PHCC members from L-R: Doug Cope , Port Huron; Brian Wilson, Sarnia; Gerald DeLugt, Sarnia; Jack Heikamp, Sarnia and (?) Philip Marsden, Sarnia.



Bob Wilson of Sarnia — the area's top player

Bob Wilson of Sarnia – Club Champion - 1971, 1972 & 1974; Club Speed Champion - 1971 & 1973



Elaborate method of recording a chess match

Bob Wilson's hand as a part of the Times Herald article – June 23, 1974.

Dues News The Port Huron Chess Club will begin to collect dues for the coming year. While dues are not required for anyone interested in playing at the club, they are required for those competing in tournament play. Annual Dues are \$2.00 for adults and \$1.00 for those under 19. Dues funds are used to offset miscellaneous expenses not funded by the Recreation Department.