



Chess Chatter

Newsletter of the Port Huron Chess Club

Editor: Lon Rutkofske

January

Vol. 45 Number 1

The **Port Huron Chess Club** meets Thursdays, except holidays, from 6:30-10:00 PM, at Palmer Park Recreation Center, 2829 Armour Street, (NE corner of Garfield Street and Gratiot Ave...1 mile North of the Blue Water Bhttps://phchess.yolasite.com/ridge) Port Huron, Michigan. Everyone is welcome. All equipment provided.email:PHuronChessClub@aol.com Website: <https://phchess.yolasite.com/>

Undefeated Huso Avdic cruises to win 2025 Speed Crown; Alan Gregg captures runner up prize!



Pictured on the left are the twin prize winners for the 2025 Speed Championships (L-R: Huso and Alan) This dynamic duo dominated play in the 41st Port Huron Chess Club Championships feasting on the remainder of the field of would-be challengers. It was wonderful hosting the eager contestants despite the weather and challenges of the holiday season, but it appears everyone relished the opportunity to compete and send the old year out with a bang!

2025 PHCC Speed Championships 12-18-2025

#	Name	Rtg: Pre/Post	Rd 1	Rd 2	Rd 3	Rd 4	Rd 5	Rd 6	Rd 7	Rd 8	Rd 9	Tot
1	Huso Avdic	2079/2098	W6 (b)	W4 (w)	W3 (b)	W2 (w)	W5 (b)	W7 (w)	W8 (b)	W10 (w)	W9 (b)	9
2	Alan Gregg	1938/1937	D7 (w)	W6 (b)	W4 (w)	L1 (b)	W10 (w)	W9 (b)	W3 (w)	W8 (w)	D5 (b)	7
5	Braeden Klaty	1766/1792	W10 (b)	L3 (b)	W7 (w)	W4 (b)	L1 (w)	W8 (w)	W6 (b)	W9 (w)	D2 (w)	6½
7	Trenton Klaty	1402/1586	D2 (b)	W8 (w)	L5 (b)	D3 (w)	W6 (b)	L1 (b)	W9 (w)	W4 (w)	W10 (b)	6
3	Ryan Urick	1900/1871	W8 (b)	W5 (w)	L1 (w)	D7 (b)	W9 (w)	W10 (b)	L2 (b)	W6 (w)	L4 (b)	5½
4	Matt Morabito	1804/1756	W9 (w)	L1 (b)	L2 (b)	L5 (w)	L8 (b)	W6 (w)	W10 (w)	L7 (b)	W3 (w)	4
8	Brad Klaty	1387/1456	L3 (w)	L7 (b)	W9 (w)	W10 (b)	W4 (w)	L5 (b)	L1 (w)	L2 (b)	W6 (w)	4
6	Lon Rutkofske	1631/1563	L1 (w)	L2 (w)	W10 (b)	W9 (b)	L7 (w)	L4 (b)	L5 (w)	L3 (b)	L8 (b)	2
10	Christine Chen	961/975	L5 (w)	W9 (b)	L6 (w)	L8 (w)	L2 (b)	L3 (w)	L4 (b)	L1 (b)	L7 (w)	1
9	Daniel Chen	1005/976	L4 (b)	L10 (w)	L8 (b)	L6 (w)	L3 (b)	L2 (w)	L7 (b)	L5 (b)	L1 (w)	0



Members' Games

Please send me what you consider your best games, annotated or not, so that I might be able to showcase them. The following games represent contests that were available at the time of this printing. Email them to me or give them to me personally if you wish. The majority of analyses is done by Fritz 12, unless otherwise indicated. [This a reminder of the change in policy in the PHCC Challenge rules: # 14 - Games can be rated by the USCF, provided both players are members in good standing with the USCF and agree to have it rated by paying in advance to the TD (Lon Rutkofske, or other club official with a valid TD certification card.) of \$1.50@ to cover rating costs.] Updated Challenge rules will follow below:

Format and rules for PHCC Challenge System

- I. Purpose: to provide club members the opportunity to challenge higher rated players on a regular basis to improve and test their skills in over-the-board non-tournament competition.
- II. Regulations: (Effective 11-8-2018)
 - a. Challenges may be made by any club member on the PHCC rating list under the following circumstances:
 1. Can only be made by a lower rated player only.
 2. Can only be made during club hours and cannot be made after 8:00PM.
 3. Must be played on the same day as the challenge was made, so there can be no advanced challenges.
 4. Both players must be present.
 5. Only one challenge may be made per meeting.
 6. A challenger can only challenge a player that is rated less than 400 points above him on the rating list.
 7. All challenges must be accepted.
 8. No challenge may be made while a participant is involved in a tournament or challenge game.
 9. A clock must be used with the time control of G/60 with 5 second delay; must be recorded by both players and submitted to the rating director upon completion of the game. **(See Sample Score Sheet on page 2)**
 10. All challenge games must comply with current tournament rules of chess as established by the US Chess Federation.
 11. No challenge game may be adjourned, but if an unusual circumstance arises, the club rating director may adjudicate.
 12. No member may be challenged more than one consecutive time by the same challenger. This means that the lower rated player cannot challenge the same player two times in a row. He/she must play another match before this can take place, but this also means that the higher rated player may be challenged by the same rated player consecutively if he has not participated in a match in between challenges within a six- week period. Abuse (I.E: Constant challenges and re-challenges or other annoying or inconsiderate behavior) must be reported to the Director and he has the option of suspending the violator indefinitely from participation in the Challenge system. Disputes will be adjudicated by the ratings director, with the advice of other players as he so wishes.
 13. Challenges can take place on the first Thursday of each month, or at any time there is no other tournament or event scheduled.
 14. **Games can be rated by the USCF**, provided both players are members in good standing with the USCF and agree to have it rated by paying in advance to the TD (Lon Rutkofske, or other club official with a valid TD certification card.) of \$1.50@ to cover rating costs. Results will be rated by the PHCC (Using the USCF rating system.) using current PHCC ratings posted at the club and will be adjusted as necessary by the club rating director.
 15. Changes will also be posted on the club website. Results will be rated by the PHCC (Using the USCF rating system.) using current PHCC ratings posted at the club and will be adjusted as necessary by the club rating director. Changes will also be posted on the club website: <https://phchess.yolasite.com/>

Games from past PHCC Championships:

2011 PHCC Championships

Rutkofske, Lon (1905) - Jones, G. Avery (1469) [C20] English

2011 PHCC Champs Port Huron Huron Chess Club (1), 06.01.2011

1.e4 e5 2.g3 Nc6 3.Bg2 Nf6 4.c4 Bc5 5.h3 0-0 6.Ne2 d6 7.0-0 Nd4 8.Nbc3 a6 9.Kh2 Qd7 10.d3 Nf3+ 11.Kh1 c6 12.Ng1 Nd4 13.f4 exf4 14.gxf4 g6 15.Nce2 Nh5 16.Kh2 Re8 17.Ng3 Nxc3 18.Kxc3 Qe7 19.Bd2 Ne6 20.Nf3 Ng7 21.Kh2 Nh5 22.d4 Bb6 23.Re1 Bc7 24.f5 d5+ 25.e5 Bxf5 26.cxd5 cxd5 27.Qb3 Be6 28.Rac1 Rac8 29.Rc2 Bb8 30.Rec1 Rxc2 31.Rxc2 Qd7 32.Qe3 f5 33.Qh6 Qg7 34.Qg5 Rf8 35.Bb4 Re8 36.Qe3 Rc8 37.Bc3 Nf6 38.Ng5 Bd7 39.Kg1 Ne4 40.Qc1 Nxc3 41.Rxc3 Rxc3 42.Bxd5+ Kf8 43.Qxc3 1-0

Wingrove,Bill (1707) - Gregg,Alan (1939) [C94] Ruy Lopez

2011 PHCC Champs Port Huron Chess Club (1), 13.01.2011

1.e4 e5 2.Nf3 Nc6 3.Bb5 a6 4.Ba4 Nf6 5.0-0 Be7 6.Re1 b5 7.Bb3 d6 8.c3 0-0 9.h3 Nb8 10.d3 c5 11.Nbd2 a5 12.a3 Qc7 13.Nf1 Bb7 14.Ng3 Nbd7 15.Nh2 Rfe8 16.Ng4 Bf8 17.Bg5 Nxc4 18.Qxc4 c4 19.dxc4 bxc4 20.Ba4 Bc6 21.Bxc6 Qxc6 22.Nf5 Re6 23.Rad1 Rg6 24.Qh4 Nf6 25.Bxf6 Rxf6 26.Qg4 Qb6 27.Qe2 Qc6 28.f3 Rb8 29.Rd2 g6 30.Ne3 Bh6 31.Rd5 Qb6 32.Kh1 Bxe3 ½-½

Boucher,Dave (1322) - Bedy,Noel (1628) [B01] Scandinavian Defense

2011 PHCC Champs Port Huron Chess Club (1), 13.01.2011

1.e4 d5 2.exd5 Nf6 3.Nf3 Nxd5 4.Bc4 Nb6 5.Bb3 Bf5 6.0-0 e6 7.Nc3 Be7 8.d3 Nc6 9.Re1 0-0 10.Bf4 Bg4 11.Re3 Nd4 12.Kh1 Bc5 13.Re4 Nxf3 14.gxf3 Bf5 15.Re2 c6 16.Qg1 Nd5 17.Bh6 Bg6 18.Nxd5 exd5 19.Bf4 Qf6 20.Qg3 Qxb2 21.Be5 Bd4 22.Rae1 Bxe5 23.Rxe5 Qa3 24.c4 Qd6 25.cxd5 Bxd3 26.dxc6 Qxc6 27.Bd5 Qc7 28.Rg1 Bg6 29.Be4 f6 30.Bd5+ Kh8 31.Re3 Qxc3 32.fxc3 Rab8 33.Re7 h6 34.Bxb7 Rf7 35.Rge1 Rxb7 36.Re8+ Kh7 37.Ra8 Rfe7 38.Rd1 Bf7 39.a3 Red7 40.Rc1 Bd5 41.Rc3 Rb1+ 0-1

Rutkofske,Lon (1905) - Boucher,Dave (1321) [A00] Irregular Opening (Bird)

2011 PHCC Championships (2), 20.01.2011

1.g3 d5 2.Bg2 Bf5 3.d3 e6 4.f4 Nc6 5.Nf3 Nf6 6.c3 Be7 7.0-0 Bg4 8.Qa4 0-0 9.Re1 Bc5+ 10.d4 Be7 11.Nbd2 Ne4 12.Nxe4 dxe4 13.Nd2 f5 14.Nc4 Bd6 15.b4 Qe8 16.b5 Ne7 17.Ne3 Bh5 18.c4 a6 19.c5 axb5 20.Qb3 Bxf4 21.gxf4 Rf6 22.d5 Rd8 23.Bb2 Rh6 24.Be5 c6 25.dxe6 Nd5 26.Nxf5 Rxe6 27.Nxc7 Qg6 28.Nxe6 Qxe6 29.Bxe4 Rd7 30.Kf2 Rf7 31.Rg1+ Bg6 32.Bxd5 cxd5 33.Bd6 Qf6 34.Rad1 Kh8 35.Be5 Qxe5 36.e3 Be4 37.Qxb5 Rxf4+ 38.exf4 Qxf4+ 39.Ke1

Qe3+ 40.Qe2 Qxcg1+ 41.Kd2 Qd4+ 42.Kc1 Qc3+ 0-1

Gregg,Alan (1939) - Jones,G Avery (1469) [C60] Ruy Lopez

2011 PHCC Championships (2), 20.01.2011

1.e4 e5 2.Nf3 Nc6 3.Bb5 Nge7 4.0-0 Ng6 5.d4 exd4 6.Nxd4 Be7 7.Nf5 0-0 8.Nxe7+ Qxe7 9.Nc3 a6 10.Bd3 d6 11.f4 Bd7 12.Nd5 Qd8 13.c3 Nce7 14.c4 c6 15.Nc3 Rb8 16.Be3 Re8 17.Kh1 b5 18.b3 b4 19.Ne2 c5 20.Bg1 Qc7 21.Ng3 Nc6 22.Qd2 Re7 23.Be2 Rbe8 24.Rad1 d5 25.exd5 Nd4 26.Bxd4 cxd4 27.Qxd4 Nxf4 28.d6 Nxe2 29.Nxe2 Qd8 30.dxe7 Qxe7 31.Qxd7 1-0

Gregg,Alan (1939) - Boucher,Dave (1322) [B00] Queen's Fianchetto Defense

2011 PHCC Championships Port Huron (5), 27.01.2011

1.f4 b6 2.e4 Bb7 3.d3 d5 4.e5 e6 5.Nf3 Nh6 6.d4 c5 7.c3 Ba6 8.Bxa6 Nxa6 9.Qa4+ Qd7 10.Qxa6 c4 11.b3 b5 12.bxc4 bxc4 13.Ba3 Bxa3 14.Qxa3 Rb8 15.Nbd2 Nf5 16.Ke2 Ne7 17.Qd6 Qxd6 18.exd6 Nf5 19.Rab1 Kd7 20.Ne5+ Kc8 21.d7+ 1-0

Bedy,Noel (1628) - Wingrove,Bill (1707) [C01] French Exchange Variation

2011 PHCC Championships Port Huron (2), 27.01.2011

1.d4 Nf6 2.Nc3 d5 3.e4 e6 4.exd5 exd5 5.Bd3 Be7 6.Nge2 0-0 7.0-0 a6 8.Nf4 Nc6 9.Nce2 Nb4 10.c3 Nxd3 11.Qxd3 Re8 12.Ng3 c6 13.Nfh5 g6 14.Nxf6+ Bxf6 15.Bf4 Be6 16.Rfe1 Qd7 17.Re2 Bg4 18.f3 Rxe2 19.Qxe2 Re8 20.Qd2 Bf5 21.Re1 Rxe1+ 22.Qxe1 Bh4 23.Qe3 Qe6 24.Qxe6 Bxe6 25.Bd6 Kg7 26.Kf2 f5 27.Ke3 Bf6 28.Be5 Kf7 29.Bxf6 Kxf6 30.f4 h6 31.h4 b6 32.b4 Bc8 33.Nf1 Ke6 34.Nd2 a5 35.a3 35.a4!!? 35...axb4 36.axb4 Ba6 37.Nf3 Bb7 38.Ne5 Kf6 39.Nd7+ Ke6 40.Nxb6 Ba6 41.Na4 Bb5 42.Nc5+ Kd6 43.g3 Ke7 44.Nd3 Ke6 45.Ne5 Draw Agreed

2014 PHCC Championships

Boucher,David (1463) - Rutkofske,Lonnie (1836) [B12] Caro-Kann, Advance Var.

2014 PHCC Championships Port Huron (1), 16.01.2014

1.e4 c6 2.d4 d5 3.e5 Bf5 4.Ne2 e6 5.Ng3 Bg6 6.Nd2 c5 7.c3 Nc6 8.Be2 cxd4 9.cxd4 Nxd4 10.Qa4+ Nc6 11.Nb3 Bb4+ 12.Bd2 Bxd2+ 13.Kxd2 Qb6 14.Bb5 Nge7 15.Nd4 0-0 16.Nge2 Nxe5 17.h3 a6 0-1

Gregg,Alan (1951) - Wingrove,William (1695) [B91] Sicilian Najdorf
2014 PHCC Championships Port Huron (1),
16.01.2014
1.e4 c5 2.Nf3 d6 3.Nc3 Nf6 4.d4 cxd4 5.Nxd4 a6
6.g3 e5 7.Nde2 b5 8.Bg2 Bb7 9.0-0 Nbd7 10.Bg5
h6 11.Be3 Nb6 12.b3 d5 13.Bxb6 Qxb6 14.Nxd5
Nxd5 15.exd5 Rd8 16.c4 bxc4 17.bxc4 Rc8
18.Qa4+ Kd8 19.Rab1 Qa7 20.Nc3 Qa8 21.Bh3
Rc7 22.Ne4 Bc8 23.Bg2 f5 24.d6 Rf7 25.Qa5+
1-0

Morabito,Matthew (1780) - Nowiski,Adam (919) [D04] Colle System
2014 PHCC Championships Port Huron (1),
16.01.2014
1.d4 d5 2.Nf3 Nf6 3.e3 Bg4 4.Be2 e6 5.0-0 Be7
6.c4 c6 7.Nc3 0-0 8.Qb3 b6 9.Bd2 dxc4 10.Qxc4
Bf5 11.Rad1 Ne4 12.Nxe4 Bxe4 13.Qc1 Bd5
14.b3 Qc7 15.Bc3 Bd6 16.g3 Nd7 17.Nd2 Nf6
18.Qc2 e5 19.e4 Be6 20.Nc4 Rad8 21.dxe5
Bxc4 22.exd6 Rxd6 23.Bxc4 Re8 24.Rxd6 Qxd6
25.e5 Rxe5 26.Bxe5 Qxe5 27.Rd1 g6 28.Qe2
Qxe2 29.Bxe2 Nd5 30.Rc1 c5 31.Bc4 1-0

Wilkinson,Stewart (1879) - Bedy,Noel (1621) [C30] King's Gambit Declined
2014 PHCC Championships Port Huron (1),
17.01.2014
1.e4 e5 2.Nc3 Nc6 3.f4 Bc5 4.Nf3 d6 5.Na4 Bb6
6.Nxb6 axb6 7.Bc4 Nf6 8.d3 0-0 9.0-0 Na5
10.fxe5 dxe5 11.Bg5 Nxc4 12.Bxf6 Qxf6
13.dxc4 Qe7 14.b3 Bg4 15.Qe1 Bh5 16.Qc3 f6
17.a4 Bg6 18.Rae1 Rfd8 19.Nh4 Qc5+ 20.Kh1
Qd4 21.Qg3 Bxe4 22.Nf5 Bxf5 23.Rxf5 Rd6
24.h3 g6 25.Ref1 Kf7 26.R5f3 Re8 27.c3 Qe4
28.Re1 Qc2 29.Rxe5 Rd1+ [29... Qd1+ wins
30.Kh2 Rxe5 31. Qxe5 Qxf3 32. Qxd6 Qxg2+ 33.
Kxg2 cxd6 34.] 30.Kh2 Qc1 31.Qh4 Rh1+ 32.Kg3
Rxe5 33.Qxf6+ Ke8 34.Qxe5+ 1-0

Rutkofske,Lonnie (1836) - Gregg,Alan (1951) [A11] English Opening
2014 PHCC Championships Port Huron (2),
23.01.2014
1.c4 Nf6 2.g3 c6 3.Bg2 d5 4.Nf3 Nbd7 5.cxd5
cxd5 6.d4 e6 7.0-0 Bd6 8.Nc3 0-0 9.Qd3 a6
10.e4 dxe4 11.Nxe4 Nxe4 12.Qxe4 Nf6 13.Qc2
h6 14.Ne5 Qc7 15.Qe2 Bxe5 16.dxe5 Nd5
17.Qg4 Qxe5 18.Qd1 Bd7 19.Re1 Qf6 20.Qb3
Bc6 21.Bd2 Rac8 22.Rac1 Rfd8 23.Ba5 Re8
24.Rxc6 bxc6 25.Qc2 Qg5 26.Bd2 Qf6 27.Ba5
c5 28.Bd2 Nb4 29.Qb1 Qd4 30.Bc3 Qd3 31.Be4
Qxb1 32.Bxb1 Nd5 33.Ba5 c4 34.f4 c3 35.bxc3
Nxc3 36.Bd3 Nxa2 37.Bxa6 Rc1 0-1

West,Tony (1898) - Wilkinson,Stewart (1879) [A84] Dutch Defense
2014 PHCC Championships Port Huron (2),
23.01.2014
1.d4 e6 2.c4 f5 3.Nf3 Nf6 4.g3 Bb4+ 5.Bd2
Bxd2+ 6.Nbxd2 0-0 7.Bg2 d6 8.Qc2 Nc6 9.0-0
e5 10.dxe5 dxe5 11.Rad1 Qe7 12.e3 e4 13.Ne1
Nb4 14.Qb3 a5 15.a3 Nc6 16.Nb1 a4 17.Qc2 Be6
18.Qe2 Ne5 19.Nd2 Rad8 20.f4 Nxc4 21.Nxc4
Rxd1 22.Qxd1 Bxc4 23.Qxa4 Bxf1 24.Bxf1 Qc5
25.Nc2 h6 26.Nd4 Qb6 27.b4 Ng4 28.h3 Nxe3
29.Qb3+ Kh8 30.Qxe3 g6 31.Kf2 Rd8 32.Nb3
Qd6 33.Be2 b6 34.Qc3+ Kh7 35.Ke3 h5 36.Qe5
Qxe5 37.fxe5 Kg7 38.Kf4 Ra8 39.g4 Rf8
40.gxh5 g5+ 41.Kxg5 f4 42.Nd4 f3 43.Bf1 Kh8
44.Kg4 Rg8+ 45.Kf4 Rg1 46.e6 Rg7 47.Nf5 Rg8
48.e7 Re8 49.Kxe4 c6 50.Kxf3 Kh7 51.Kf4
Resigns

Wingrove,William (1695) - Morabito,Matthew (1780) [B22] Sicilian Defense
2014 PHCC Championships Port Huron (2),
23.01.2014
1.e4 c5 2.c3 d6 3.d4 cxd4 4.cxd4 Nf6 5.Nc3 e6
6.Nf3 Be7 7.Be2 0-0 8.0-0 a6 9.h3 b5 10.a3 Bb7
11.Bd3 Nc6 12.Qc2 e5 13.d5 Nb8 14.Be3 Nbd7
15.b4 Rc8 16.Qd2 Nb6 17.Rac1 Nc4 18.Bxc4
Rxc4 19.Qd3 Qa8 20.Nd2 Rcc8 21.f4 Nd7 22.f5
Bd8 23.g4 Nb6 24.g5 Nc4 25.Nxc4 Rxc4 26.f6
g6 27.Qe2 Qc8 28.Bd2 Qxh3 29.Rf2 Bb6 30.Qf1
Qg3+ 31.Qg2 Bxf2+ 32.Kf1 Qxg2+ 33.Kxg2 Bd4
0-1

Bedy,Noel (1621) - Boucher,David (1463) [D05] Colle System
2014 PHCC Championships St. Clair (2),
29.01.2014
1.d4 e6 2.c3 d5 3.e3 Nf6 4.Nd2 c5 5.Bd3 Bd6
6.Ngf3 Nc6 7.0-0 0-0 8.dxc5 Bxc5 9.e4 Qc7
10.exd5 Nxd5 11.Nc4 Nf6 12.Qe2 b5 13.Ncd2 a6
14.Ne4 Be7 15.Nxf6+ Bxf6 16.Qe4 g6 17.Bg5
Bg7 18.Rfe1 Bb7 19.Qh4 Ne5 20.Nxe5 Bxe5
21.Re3 Bg7 22.Rae1 f6 23.Rh3 Bh8 24.Bh6 Rf7
25.Bxg6 hxg6 26.Bf4 Rh7 27.Bxc7 Rxh4
28.Rxh4 Kf7 29.Rd1 Re8 30.Rd7+ Kg8 31.Rhh7
Bc8 32.Rd8 Rxd8 33.Bxd8 Kxh7 34.Kf1 e5
35.Ke2 e4 36.Ke3 f5 37.f3 Bb7 38.fxe4 Bxe4
39.h4 Bg7 40.g4 Be5 41.gxf5 gxf5 42.Ba5 Bg3
43.h5 Kh6 44.b3 Kxh5 45.c4 Bc6 46.cxb5 axb5
47.a4 f4+ 48.Kd3 f3 49.Bb6 bxa4 50.bxa4 Bxa4
51.Bg1 Kg4 52.Ke3 Bc6 0-1

Nowiski,Adam (919) - Jones,G. AVery (1684) [B12] Caro-Kann, Advance Var.
2014 PHCC Championships Port Huron (2),
30.01.2014

1.e4 c6 2.d4 d5 3.e5 Bf5 4.Nf3 Bg4 5.h3 Bh5
 6.Be2 e6 7.c3 Qc7 8.0-0 c5 9.Be3 Nc6 10.Na3
 a6 11.Qd2 Nge7 12.b4 Nf5 13.Bf4 Bxf3 14.Bxf3
 cxb4 15.cxb4 Bxb4 16.Qd3 Nfxd4 17.Nc2 Nxf3+
 18.Qxf3 Bc5 19.Qc3 b6 20.Ne1 ?? 20...Bd4
 21.Qc1 Bxa1 22.Qxa1 0-0 23.Qc3 Rfc8 24.Qg3
 Nd4 25.Kh1 Ne2 26.Qg4 Nxf4 27.Qxf4 Qc4
 28.Qxc4 Rxc4 29.Nd3 Rac8 30.Rb1 b5 31.Rd1
 Rd4 32.f4 Rc3 0-1

Boucher,David (1463) - Wingrove,William (1695) [B22] Sicilian Defense

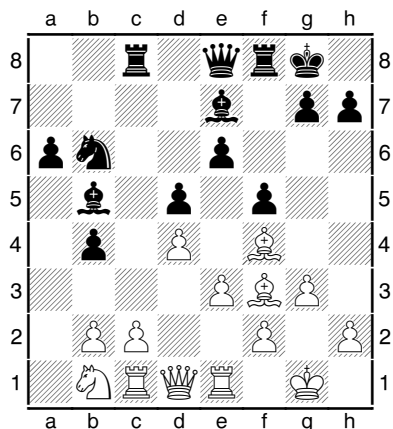
2014 PHCC Championships St. Clair (3),
 16.02.2014

1.e4 c5 2.d4 cxd4 3.c3 d5 4.exd5 Qxd5 5.Nf3
 Nc6 6.c4 Qd6 7.Bd3 Nf6 8.0-0 Bg4 9.b3 e6
 10.Ba3 Nb4 11.Nbd2 Qb6 12.Ne4 Be7 13.Bb2
 Nc6 14.Re1 0-0 15.c5 Qc7 16.Bb5 Rad8
 17.Nxf6+ Bxf6 18.Re4 Bf5 19.Bxc6 bxc6 20.Re2
 e5 21.h3 Rfe8 22.g4 Bc8 23.g5 Be7 24.Rxe5
 Bxh3 25.Nxd4 Qxe5 0-1

Jones,G. Avery (1684) - Rutkofske,Lonnie (1836) [A80] Dutch Defense

2014 PHCC Championships Port Huron (3),
 14.02.2014 [Lonnie Rutkofske]

1.d4 f5 2.Nf3 Nf6 3.Nc3 e6 4.g3 Be7 5.Bg2 0-0
 6.0-0 d5 7.Ne5 a6 8.Bf4 Nbd7 9.a3 c5 10.e3 Qe8
 11.Bf3 Nxe5 12.Bxe5 Bd7 13.Re1 Rc8 14.Qe2
 b5 15.Rac1 b4 16.axb4 cxb4 17.Nb1 Bb5
 18.Qd1 Nd7 19.Bf4 Nb6?? Diagram



[Best was g5! forcing the exchange, and doubling white's pawns, creating a target for future attack!]
 20.b3 Qd7 21.Be2 a5 22.Be5 a4 23.Bxb5 Qxb5
 24.bxa4 Qxa4? [Na4 is far better because it keeps the Black queen on a safer square and permits eventual targets on b2 and c3, as well as making counter play for White difficult. It also gives Black time to double rooks and continue the q-side development, while the B of e5 languishes without good squares.] 25.Nd2 Rc6 26.Nb3 Rc3 27.Ra1

Qc6 28.Ra7 Nc8 29.Rc7 Qb6 30.Nc5 Re8
 31.Na4 Qxc7 32.Bxc7 Rxc7 33.Qd3 Rc4 34.Nc5
 [Here the simple 34...Bc5 35 dc5, Rc5 36.Qd4 Rb5
 37.Rb1, Nd6 38.Rb4 Rb4 39.Qb4, Nc4 should hold
 at least a draw.] 34...Bf8 35.Ra1 Nd6 36.Ra6 Kf7
 37.Qe2 g6 38.Nd7 Ke7 39.Ne5 Rc7 40.Nc6+ Kf6
 41.Nxb4 Rb8 42.Qd2 Ne4 43.Nxd5+ Kg7 44.Qa5
 Rb1+?? [A massive blunder here as time was
 winding down. Correct seems to be 44...Rc2!! with
 mating threats. If 45. Re6, Rb1 check followed by
 46.Kg2, Rf2+ 47.Kh3, Ng5+48.Kh4, Rh2 49.Kg5,
 h6 mate!] 45.Kg2 Rcb7 46.Rxe6 R1b5 47.Qd8
 Rf7 48.Ne7 Kh8 [Black lost on time after a mad
 time scramble.] 1-0

Bedy,Noel (1621) - Nowiski,Adam (919) [D02] Queen's Pawn Game

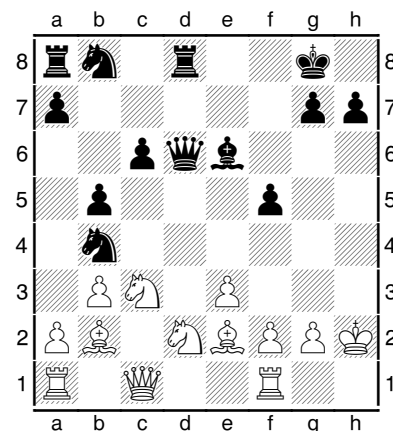
2014 PHCC Championships Saint Clair (3),
 18.02.2014

1.d4 d5 2.Nf3 e6 3.c3 c6 4.e3 Nf6 5.Bd3 Nbd7
 6.Nbd2 c5 7.0-0 Bd6 8.Re1 0-0 9.e4 cxd4
 10.cxd4 Bb4 11.e5 Ne8 12.a3 Ba5 13.b4 Bc7
 14.Nf1 Bb8 15.Ng3 g6 16.Qd2 Ng7 17.Qh6 Re8
 18.Ng5 Nf8 19.Nf3 b6 20.Bg5 Nf5 21.Nxf5 exf5
 22.Bxd8 Rxd8 23.Ng5 a5 24.Qh4 Re8 25.Bb5
 Bd7 26.Bxd7 Nxd7 27.Qxh7+ Kf8 28.Qxf7# 1-0

Gregg,Alan (1951) - West,Tony (1898) [A10] English Opening

2014 PHCC Championships Port Huron (3),
 13.02.2014 [LWR]

1.Nf3 e6 2.c4 f5 3.Nc3 Nf6 4.d3 d5 5.e3 Bd6
 6.Be2 c6 7.b3 e5 8.0-0 0-0 9.cxd5 Nxd5 10.Bb2
 Qe7 11.Nd2 Be6 12.Nc4 Bc7 13.d4 exd4
 14.Qxd4 Nb4 15.Qd1 b5 16.Nd2 Rd8 17.Qc1
 Bxh2+ 18.Kxh2 Qd6+ Diagram



[Alan indicated that the simple 19.g3! wins a piece, because if 19...Qd2? 20.Rd1!! nabs the Q!]
 19.Kg1 Qxd2 20.Rd1 Qxc1 21.Raxc1 Nd7 22.a3
 Na6 23.Rd6 [if 23...Bb3 24. Nb5, and all of White's

pieces are poised to destroy the Black position.]
 Fritz 12: 1) 23...Ndc5 [Fritz 12: 2) 23...Bxb3
 24.Nxb5 cxb5 25.Rxa6 Nb6 26.Bxb5 Rac8 27.Rxc8
 Nxc8 28.Rc6 Rd1+ 29.Kh2 Nd6 30.Ba6 Ne8
 31.Bd4 Rd2 32.Rc8 Kf7 0.93/24] 24.Rcd1 Rxd6
 25.Rxd6 b4 26.Na4 Bxb3 27.Nxc5 Nxc5 28.axb4
 Ne6 29.Rxc6 Rb8 30.Bc3 g6 31.Rd6 Rc8 32.Be5 a5
 33.b5 Rc2 34.Bd3 Rc1+ 0.76/25 Fritz 12: 1)
 35.Kh2 [Fritz 12: 2) 35.Bf1 Bc4 36.Rc6 Rxf1+
 37.Kh2 Ba2 38.b6 Rb1 39.Rc8+ Kf7 40.Ra8 Bd5
 41.Ra7+ Ke8 42.Rxh7 Rxb6 43.Ra7 Rb5 44.Bc3
 Nc5 45.Bxa5 Rb2 46.Rc7 -2.92/19] 35...Rc8
 36.b6 Nc5 37.Bb5 Kf7 38.Bc6 a4 39.b7 Nxb7
 40.Bxb7 Rc5 41.Bd4 Rc7 42.Rf6+ Ke7 43.Rb6 Kd7
 44.Kg3 Rc2 45.Bf3 2.99/19 Rc7 Fritz 12: 1)
 46.Kf4 [Fritz 12: 2) 46.Be5 Rc8 47.Kf4 Rc2 48.Kg5
 Rxf2 49.Kf6 Rc2 50.Rb7+ Kd8 51.Rxh7 a3 52.Kxg6
 Be6 53.Kf6 Bg8 54.Rh8 4.15/16] 46...Bc4 47.Be5
 Rc5 48.Rd6+ Ke7 49.Rd4 Ke6 50.Bd6 Rc8 51.Bb7
 Rd8 52.Rxc4 Rxd6 53.Rxa4 Kf6 54.Bf3] ½-½

**Morabito,Matthew (1780) -
 Wilkinson,Stewart (1879) [C00] French
 Defense**

2014 PHCC Championships Port Huron (3),
 13.02.2014

1.e4 e6 2.d3 d5 3.Nd2 c5 4.Ngf3 Nc6 5.Be2 Bd6
 6.0-0 Nge7 7.Re1 0-0 8.exd5 Nxd5 9.Ne4 Be7
 10.Bd2 b6 11.a4 Bb7 12.Bg5 h6 13.Bd2 Qc7
 14.Qc1 f5 15.Nc3 Nxc3 16.Bxc3 Bf6 17.Qe3
 Rae8 18.d4 cxd4 19.Nxd4 Nxd4 20.Bxd4 e5
 21.Bc3 f4 22.Qd3 Rc8 23.Bg4 e4 24.Rxe4 Bxe4
 25.Qxe4 Bxc3 26.Bxc8 Rxc8 27.bxc3 Qxc3
 28.Qe6+ Kh8 29.Rc1 f3 30.gxf3 Rf8 31.Qe3
 Qxe3 32.fxe3 Rxf3 33.Re1 g5 34.e4 Kg7 35.Kg2
 Rc3 36.Re2 Kf6 37.e5+ Ke6 38.Kf2 Rc5 39.Kf3
 h5 40.h3 Rxe5 41.Rd2 Rd5 42.Re2+ Kd6
 43.Re8 Rf5+ 44.Kg3 Kc5 45.Re7 a5 46.c3 Kc4
 47.Re6 b5 48.Rc6+ Kb3 49.axb5 Rxb5 50.c4
 Re5 51.c5 Kb4 52.Rh6 h4+ 53.Kg4 Rxc5
 54.Rb6+ Rb5 55.Rc6 Kb3 56.Rc1 Kb2 57.Re1
 a4 58.Re2+ Kb3 59.Re3+ Ka2 60.Re4 a3
 61.Re2+ Rb2 62.Re5 Rg2+ 63.Kh5 Rg3 64.Rb5
 Ka1 65.Ra5 a2 66.Re5 Rg2 67.Ra5 Kb1
 68.Rb5+ Rb2 69.Rxg5 a1Q 70.Rg1+ Ka2
 71.Rxa1+ Kxa1 72.Kxh4 Rg2 73.Kh5 Kb2 74.h4
 Kc3 75.Kh6 Kd4 76.h5 Ke5 77.Kh7 Kf6 78.h6
 Ke7 79.Kh8 ½-½

2018 PHCC Championships

**Jones,G. Avery (1630) - Boucher,David
 (1303) [A41] Modern Defense**

2018 PHCC Championships Port Huron (1),
 01.02.2018

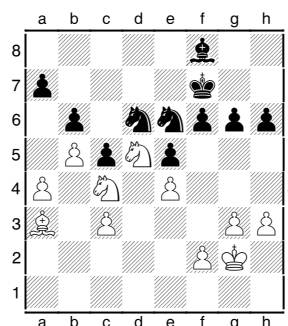
1.d4 d6 2.Bf4 g6 3.Nf3 Bg7 4.e3 Nd7 5.c3 e5
 6.dxe5 dxe5 7.Bg3 Nh6 8.h3 0-0 9.Be2 Nf5
 10.Bh2 Qe7 11.0-0 c6 12.Qc2 Re8 13.e4 Nh4

14.Nbd2 Bh6 15.Nc4 Nxf3+ 16.Bxf3 Qg5 17.Nd6
 Re6 18.Rad1 Rf6 19.Bg4 Nb6 20.Nxc8 Nxc8
 21.Rd8+ Kg7 22.Rxc8 Rxc8 23.Bxc8 Rd6
 24.Rd1 Qd8 25.Bxe5+ 1-0

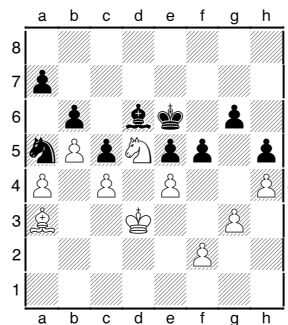
**Bedy,Noel (1504) - Gregg,Alan (1948) [B07]
 Pirc Defense**

2018 PHCC Championships Port Huron (1),
 11.01.2018 [Notes by Lon Rutkofske]

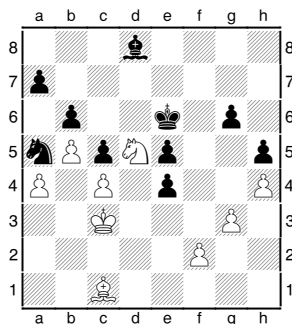
1.d4 g6 2.Nf3 d6 3.Nbd2 Bg7 4.e4 c6 5.c3 Nf6
 6.Bd3 0-0 7.0-0 Nbd7 8.Re1 e5 9.dxe5 dxe5
 10.a4 b6 11.b4 Qc7 12.Ba3 Bb7 13.Bc4 c5
 14.b5 Rad8 15.Qc2 Rfe8 16.Rad1 Nf8 17.Ba2
 h6 18.Bb1 Bc8 19.h3 Be6 20.Ba2 Nh5 21.Bxe6
 Nxe6 22.Nc4 Nhf4 23.Ne3 Kh7 24.Kh2 Qc8
 25.Rxd8 Rxd8 26.Rd1 Nc7 27.Nd2 Rd7 28.Ndc4
 Qd8 29.Rxd7 Qxd7 30.Qd2 Qxd2 31.Nxd2 Bf8
 32.Ndc4 f6 33.g3 Nfe6 34.Nd5 Kg7 35.Nce3 Kf7
 36.Kg2 Ne8 37.Nc4 Nd6 Diagram



38.Nxd6+ [An interesting thought would be
 38.Ncb6?!, ab6 39.Nb6 with a pair of connected
 passed pawns heading for queening squares!]
 38...Bxd6 39.h4 Nd8 40.Kf3 Nb7 41.Ne3 h5
 42.Ke2 Ke6 43.c4? [This move seems to lock the
 position, make the c-pawn a target, and prevent
 using the c4 square open to his N...a better plan
 may have been 43. Bc1 focusing on repositioning
 his B to a better square like d2 to shore up his
 defenses and help out on the Q-side! At this point,
 Alan has little counter play and this position is
 very drawish, which isn't in Alan's plan. He admits
 that he was attempting to provoke complications
 hoping to gain time and capitalize on his strong
 endgame play.] 43...Na5 44.Kd3 f5 45.Nd5??

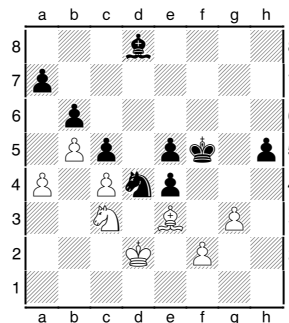


[Ceding a central pawn is not the way to a drawn position, the text, while not immediately losing, makes a draw more difficult, although not fatal! Best was the simple 45.f3 ...but had he repositioned his B to c1 earlier the threat of f4 would not loom as large.] **45...fxe4+ 46.Kc3 Be7 47.Bc1 Bd8** Diagram



[Alan chooses a perfect defensive spot for his B, and now can proceed to penetrate the K-side with his K as now White's pieces become overburdened. I think White's plan must include unraveling his pieces by Bh6 and returning his N to e3 to prevent the incursion of the Black K.] **48.Be3?** [Bh6 was essential here, because the K cannot penetrate and once the N returns to e3. At this point the extra pawn on e4 is rather a liability and all white needs to do is shuffle his B or K to claim the draw!] **48...Nb7 49.Kb3 Nd6 50.Bc1 Nf5 51.Be3 Nd4+ 52.Kc3 Kf5 53.Kd2 Kg4 54.Nc3 Kf5 55.Nd5 g5 56.hxg5 Nf3+ 57.Ke2 Bxg5**

[Most observers viewed this as an error by Alan and almost ensured a draw. If 58.Bg5 Kg5 59.Ke3 holds and now Black has to worry about his a and b pawns. If 58 Ng5 then Ne7+ permits the White N access to c6 which is deadly!] **58.Nc3 Nd4+ 59.Kd2 Bd8** Diagram



[With best play, white should be able to hold on to a draw.] **60.Nd5 Nb3+ 61.Kc3 Na5 62.Bd2 Kg4 63.Be1??** [Effectively dooming his B to passivity, the simple 63. Be3 still holds.] **63...Kf3 64.Ne3 Bg5 65.Kd2??** [Just a time control blunder, since Noel was down to less than three minutes at this point in the game. A nicely played game by Noel, who always seems to give Alan fits! But again, Alan managed to use his experience and endgame prowess to secure the victory!] **0-1**

Tentative Calendar of Events for 2026:

First Thursday of Each Month: Free Chess Clinics – 6:30 to 7:00 PM; **Private Lessons** can be arranged @ \$15/person per hour; **Open play:** 7:00 until 10:00 PM. Players wishing to play Challenge matches with longer time controls of G/60 with 5 sec delay can choose to play match games if they so desire. Participants will be required to follow the rules and regulations for **Challenge Play** (As outlined in **Chess Chatter**, our website under "Club Member Ratings Lists", or posted at the club.) and colors will be selected by lot. PHCC club ratings will be used. Players should turn their game scores into Lon, so he can adjust ratings appropriately and showcase the games in **Chess Chatter**. **Monthly Tournaments** will be held, **usually** on the third Thursday of the month - See the events schedule below for specifics! Additional learning opportunities are offered by the club with periodic lectures from 7:00 – 8:00 on the second meeting of each month.

Coming in February 5th 2026 : PHCC Monthly Quads: 3-RR Sections of 4 by rating and unrated all are welcome regardless of strength; **Registration** 6.30-6.45 pm on the day early registration by email or text; Round 1 Starts at 7 pm; **Time Control:** G/25 PLUS 5 SEC DELAY; **Entry fee** :\$5/person (**no fee for club members who have paid up memberships**); **Prize:** \$15 each section; **Contact:** Alan Gregg, cell: [810-357-8984](tel:810-357-8984); email: alan1144@gmail.com, Website: <https://phchess.yolasite.com>

January 8- Feb. 26, 2026 -The final format for the 2025 Club Championships and Junior Championships will be determined by the number of pre-tournament entries, so please contact Lon by Tuesday, Jan 6, 2026 to register for the event. The tournament will be held between **January 8- Feb. 26, 2026** and format, rules and appropriate details will be emailed and published to the website for those wishing to pre-register.

Monthly Quads: February 5th – See announcement above!

Monthly Quads: March 5th – See announcement above!

March 7th - Tentative - Port Huron Area Schools District Tournament – At Port Huron High School - 9am-1pm – seeking PHCC volunteers - see flyer in January & February Issues of Chess Chatter.

March 26th - PHCC Under 1800 Rated Only :Action Quads (or Mini-Swiss depending on registration) G/10; non- PHCC member EF: \$5.00 ...Prizes based on entries. A minimum of 4 participants will be necessary to hold the event. Please contact Lon via phone or email if you plan to register. Onsite registration 6:30-7:00PM - Play begins at 7:00 PM. Prizes: if Quad: 1st = \$15; if Mini-Swiss: Based on entries! (Recording games is optional, for players that wish to keep score, neither player is required to keep score if either has 5 minutes or less on their clock.)

Monthly Quads: April 2nd – See announcement above!

April 23rd - PHCC over 1700 Rated Only :Action Quads (or Mini-Swiss depending on registration) G/10; non- PHCC member EF: \$5.00 ...Prizes based on entries. A minimum of 4 participants will be necessary to hold the event. Please contact Lon via phone or email if you plan to register. Onsite registration 6:30-7:00PM - Play begins at 7:00 PM. Prizes: if Quad: 1st = \$15; if Mini-Swiss: Based on entries! (Recording games is optional, for players that wish to keep score, neither player is required to keep score if either has 5 minutes or less on their clock.)

Monthly Quads: May 7th – See announcement above!

May 21st - PHCC Rated Action Quads (or Mini-Swiss depending on registration) G/10 ; non- PHCC member EF: \$5.00 ...Prizes based on entries. A minimum of 4 participants will be necessary to hold the event. Please contact Lon via phone or email if you plan to register. Onsite registration 6:30-7:00PM - Play begins at 7:00 PM. Prizes: if Quad: 1st = \$15; if Mini-Swiss: Based on entries! (Recording games is optional, for players that wish to keep score, neither player is required to keep score if either has 5 minutes or less on their clock.)

Monthly Quads: June 4th – See announcement above!

June 20th - PHCC Under 1800 Rated Only: Action Quads (or Mini-Swiss depending on registration) G/10 ; non- PHCC member EF: \$5.00 ...Prizes based on entries. A minimum of 4 participants will be necessary to hold the event. Please contact Lon via phone or email if you plan to register. Onsite registration 6:30-7:00PM - Play begins at 7:00 PM. Prizes: if Quad: 1st = \$15; if Mini-Swiss: Based on entries! (Recording games is optional, for players that wish to keep score, neither player is required to keep score if either has 5 minutes or less on their clock.)

Monthly Quads: July 2nd – See announcement above!

July 23rd - USCF/PHCC Rated Action Quads (or Mini-Swiss depending on registration) G/25 with 3 sec. delay ; non- PHCC member EF: \$5.00 ...Prizes based on entries. A minimum of 4 participants will be necessary to hold the event. Please contact Lon via phone or email if you plan to register. Onsite registration 6:30-7:00PM - Play begins at 7:00 PM. Prizes: if Quad: 1st = \$15; if Mini-Swiss: Based on entries! (Recording games is optional, for players that wish to keep score, neither player is required to keep score if either has 5 minutes or less on their clock.)

Monthly Quads: August 6th – See announcement above!

August 13, 20, 27 – USCF/PHCC Rated Mini-Swiss (or Quads based on entries) 3 Round- USCF Rated Mini-Swiss. Game/90 minutes with/5 sec. delay. USCF and PHCC membership required. One game per night (August 13,20,27)! Play will begin at 7:00PM. ; non- PHCC member EF: \$5.00 Play will begin at 7:00PM. A minimum of 4 participants are required. Prizes: based on entries. Please register in advance by contacting Lon Rutkofske by August 4th so he can determine if there are enough entries to hold the event.

Monthly Quads: September 3rd – See announcement above!

September 24th – PHCC Rated Thematic tournament: G/25 with 3 sec. delay EF: \$5.00 ...Prizes based on entries. A minimum of 4 participants will be necessary to hold the event. Please contact Lon via phone or email if you plan to register. Onsite registration 6:30-7:00PM; non- PHCC member EF: \$5.00 - Play begins at 7:00 PM. Prizes: if Quad: 1st = \$15; if Mini-Swiss: Based on entries! (Recording games is optional, for players that wish to keep score, neither player is required to keep score if either has 5 minutes or less on their clock.) Players with the white pieces will be playing a game with a predetermined opening sequence such as the Ruy Lopez, or KI Attack based on one of the openings drawn at random by the TD. The game will begin from that opening position.

Monthly Quads: October 1st – See announcement above!

October 15th PHCC Speed Championships - The Port Huron Chess Club's 41st Annual Speed Championship Tournament will be held on Thursday, October 15th beginning at 7:00 PM. Registrations will determine the number of rounds and prizes. PHCC membership required. Entry fee will be \$5.00. Please contact Lon if you plan to play. There will be no registrations on-site. If you intend to play, contact Lon before October 14th. (Will be USCF rated if all entrants are USCF members.)

Monthly Quads: November 5th – See announcement above!

November 19th – PHCC Rated Quick Tournament DRR Game/15 PHCC Rated Action Quads (or Mini-Swiss depending on registration) ; non-PHCC member EF: \$5.00 ...Prizes based on entries. A minimum of 4 participants will be necessary to hold the event. Please contact Lon via phone or email if you plan to register. Onsite registration 6:30-7:00PM - Play begins at 7:00 PM. Prizes: if Quad: 1st = \$15; if Mini-Swiss: Based on entries! (Recording games is optional, for players that wish to keep score, neither player is required to keep score if either has 5 minutes or less on their clock.)

Ratings:

The following lists represent only current members of the Port Huron Chess Club. Current USCF ratings were used for members that had them, to establish the initial club rating list. The USCF rating format is used as the basis for calculating our club rating list. Members that had no USCF ratings are assigned a provisional rating based on their performances against regular club members with USCF ratings. Club rated events will use these ratings for pairing purposes.

PHCC Ratings as of 12/22/25

<u>Name</u>	<u>Rating</u>
Avdic, Huso	2104
Gregg, Alan	1952
Morabito, Matt	1830
Urick, Ryan	1802
Klaty, Braeden	1760
Rutkofske, Lon	1728
Klaty, Trenton	1526
Jackson, LaFonce	1500
Wingrove, Bill	1499
Ledsworth, Brian	1400
Klaty, Brad	1380
Mang, Johnny	1000
Chen, Christine	800
Muruganandam, Mugil	638
Bussone, Stephen	630
Chen, Daniel	600

PHCC Blitz Ratings as of 12/22/25

<u>Name</u>	<u>Rating</u>
Avdic, Huso	2098
Gregg, Alan	1937
Urick, Ryan	1871
Klaty, Braeden	1792
Morabito, Matt	1756
Klaty, Trenton	1586
Rutkofske, Lon	1563
Wingrove, Bill	1522
Jackson, LaFonce	1476
Klaty, Brad	1456
Ledsworth, Brian	1317
Muruganandam, Mugil	1256
Bussone, Stephen	1083
Chen, Christine	975
Mang, Johnny	988
Chen, Daniel	976

USCF Ratings as of 12/22/25

<u>Name</u>	<u>Rating</u>
Avdic, Huso	1974
Alan Gregg	1893
Rutkofske, Lon	1800
Morabito, Matt	1780
Urick, Ryan	1712
Klaty, Braeden	1583
Wingrove, Bill	1520
Klaty, Brad	1352
Ledsworth, Brian	1314
Klaty, Trenton	1170
Willard, Parker	823
Muruganandam, Mugil	779

USCF Quick/Action Ratings as of 12/22/25

<u>Name</u>	<u>Rating</u>
Avdic, Huso	1923
Morabito, Matt	1908
Gregg, Alan	1852
Rutkofske, Lon	1720
Wingrove, Bill	1510
Klaty, Braeden	1468
Klaty, Brad	1365
Klaty, Trenton	1141
Ledsworth, Brian	1087
Muruganandam, Mugil	734

USCF Blitz Ratings as of 12/22/25

<u>Name</u>	<u>Rating</u>
Bruziewicz, Andrew	2152
Avdic, Huso	1997
Gregg, Alan	1837
Morabito, Matt	1732
Rutkofske, Lon	1602
Klaty, Braeden	1468
Klaty, Trenton	1341
Ledsworth, Brian	1317
Klaty, Brad	1289

Dues News:

While dues are not required for anyone interested in playing at the club, they are required for those competing in tournament play. Annual Dues are \$30.00 for adults and \$15.00 for those under 19. Dues will cover the yearly entry fees for any club-rated event. Family rates available upon request. Dues funds are used to offset miscellaneous expenses not funded by the Recreation Department. United States Chess Federation memberships are available through the club.